

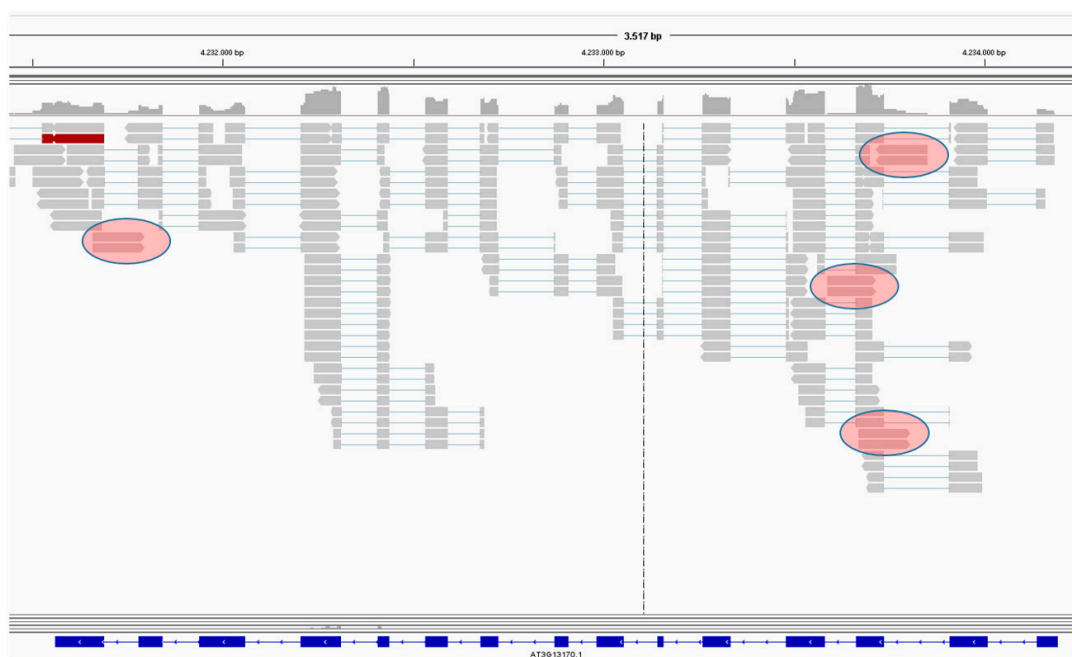
Supplementary Material

# Heterologous Complementation of SPO11-1 and -2 Depends on the Splicing Pattern

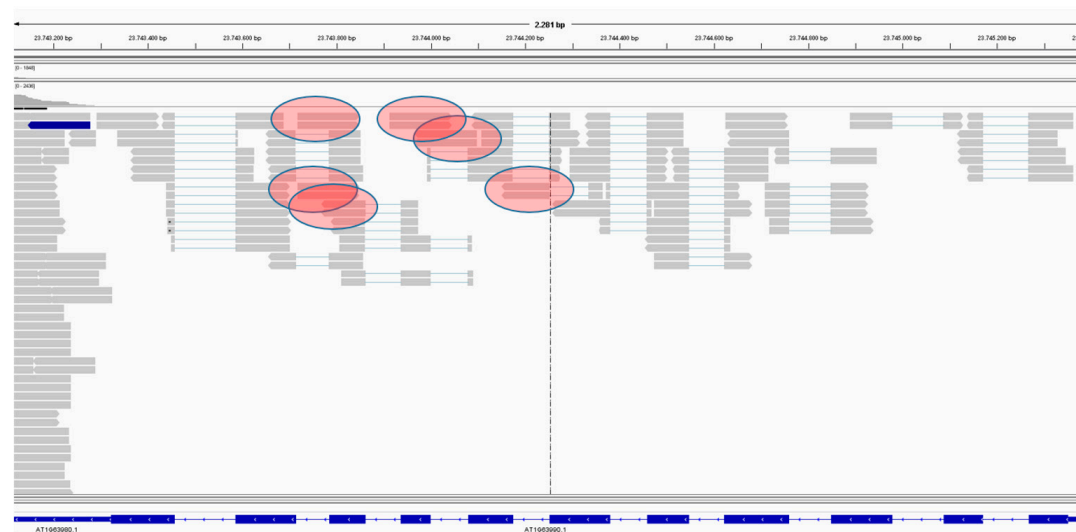
Thorben Sprink \* and Frank Hartung

Julius Kuehn-Institute (JKI)—Federal Research Centre for Cultivated Plants, Institute for Biosafety in Plant Biotechnology, 06484 Quedlinburg, Germany; Frank.Hartung@julius-kuehn.de

\* Correspondence: Thorben.Sprink@julius-kuehn.de



**Figure S1.** IGV viewer screenshot for SPO11-1 from transcriptome data received from RNA-Seq analysis of Col-0 flower buds. Intron retentions are marked.



**Figure S2.** IGV viewer screenshot for SPO11-2 from transcriptome data received from RNA-Seq analysis of Col-0 flower buds. Intron retentions are marked.