

Figure S1. Climatic data.

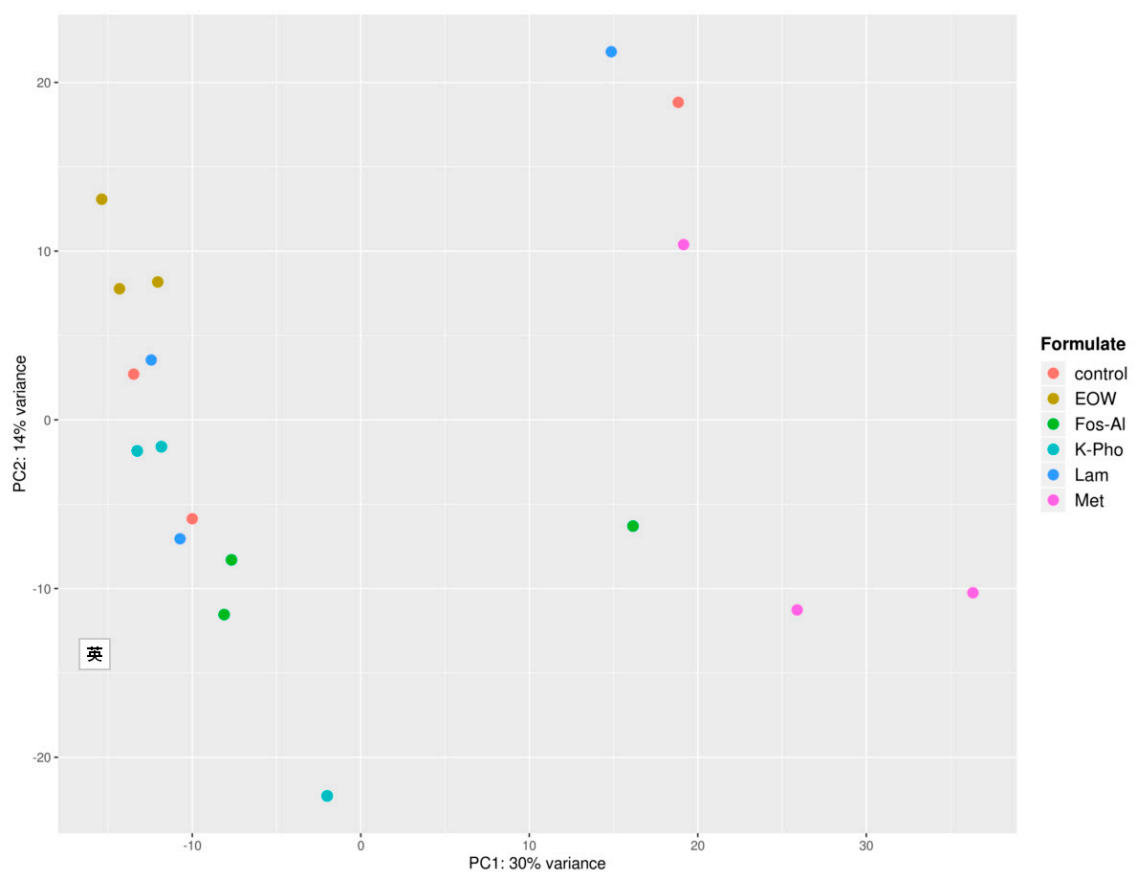


Figure S2. Sample Principal Component Analysis (PCA) plot for transformed data (log2 normalized counts), visualizing the overall effect of experimental covariates and batch effects in the different replicates of the several treatments: control, Fos-Al (Alette), K-Pho (Century), EOW (Electrolyzed water), Met (Polyram), Lam (Vacciplant).

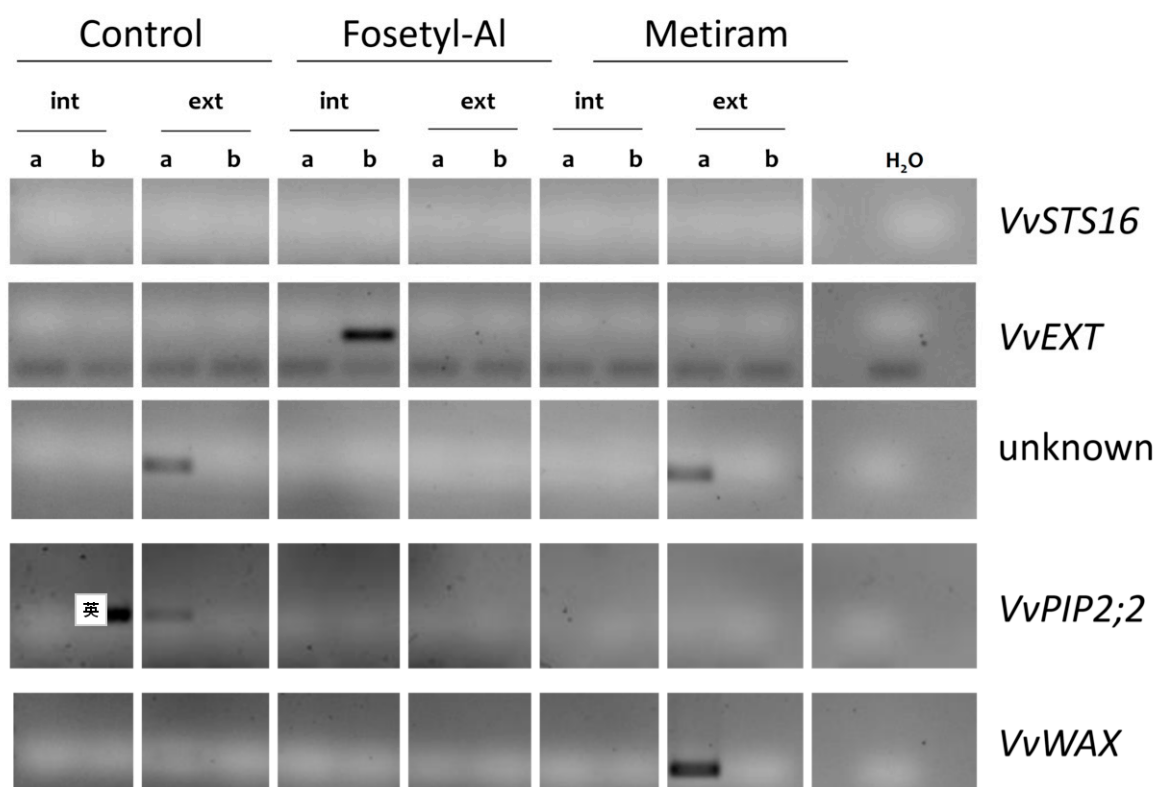


Figure S3. One-step RT-PCR analysis of microdissected cells using specific primers for *VvSTS16*, *VvEXT*, an unknown protein, *VvPIP2;2* and *VvWAX*.