

Supplementary data

Figure S1.

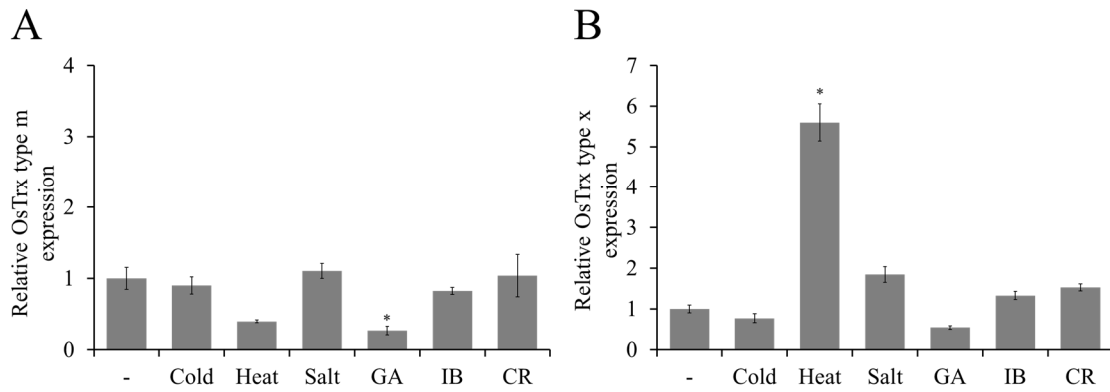


Figure S1. Expression level of two type *OsTrx* genes in rice treated with various external abiotic stresses. Rice seeds were irradiated with GA (200 Gy), IB (40 Gy), and CR (cosmic-rays). Ten-day-old rice seedlings were treated with heat (45°C), cold (4°C), and salt (200 mM NaCl). Error bars denote standard errors of biological replicates. Expression values of each gene are normalised against the expression of *OsActin*. Asterisks indicate statistical significance ($P < 0.05$, one-way ANOVA with a Tukey's *post hoc* test) of differences between control and stress treatment.

Figure S2.

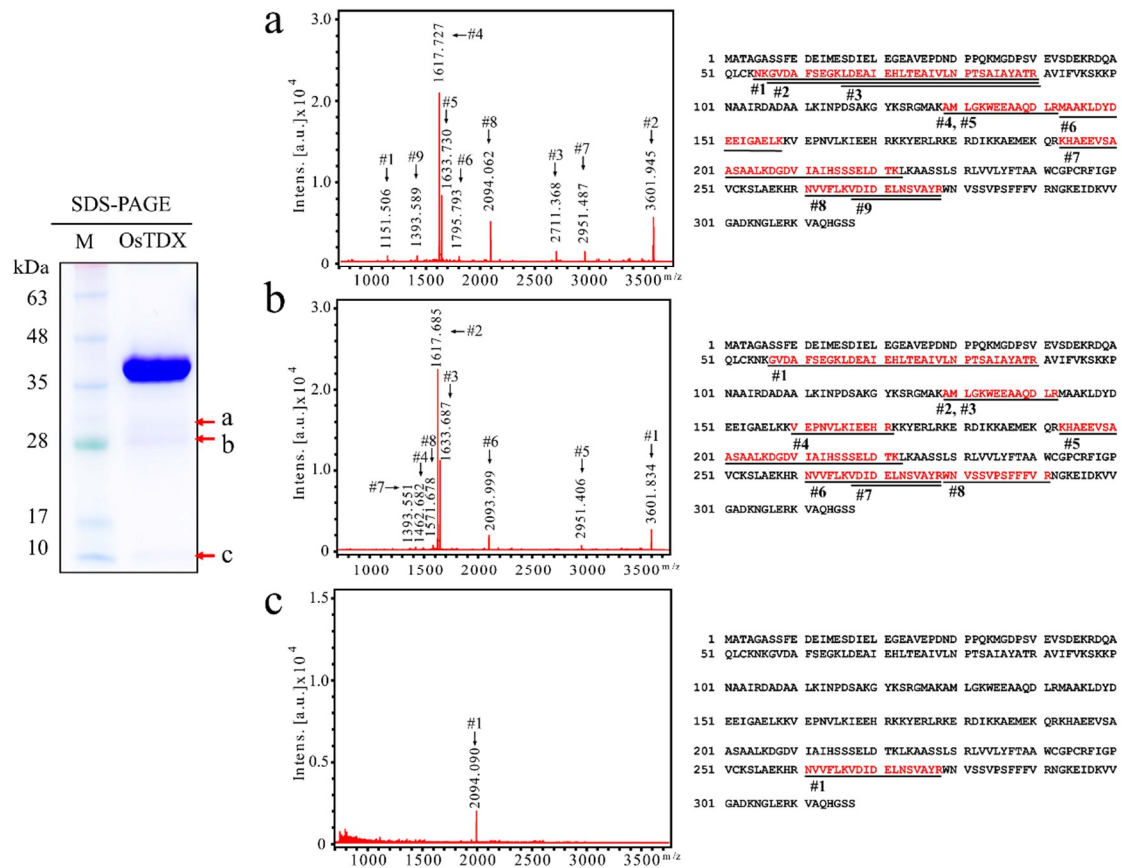


Figure S2. Purification and identification of OsTDX protein. Bacterially expressed recombinant OsTDX was resolved by 12 % SDS-PAGE (left panel; Fig. 2A) and MALDI-TOF analysis (right panel). (a, b and c) The labeled protein fragments by red arrows were identified as OsTDX proteins. Each trypsin digested peptide fragment (defined as #) is indicated by the underlined amino acids.