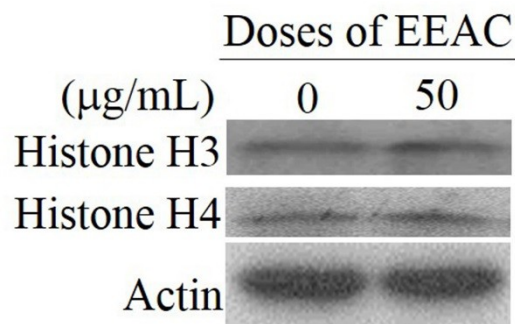


# ***Antrodia cinnamomea*, a Treasured Medicinal Mushroom, Induces Growth Arrest in Breast Cancer Cells, T47D Cells: New Mechanisms Emerge**

Supplementary Materials:



**Figure S1.** Expression of histone H3 and H4 protein after treated with EEAC for 48 h determined by Western blot assay. Actin was used as the loading control.