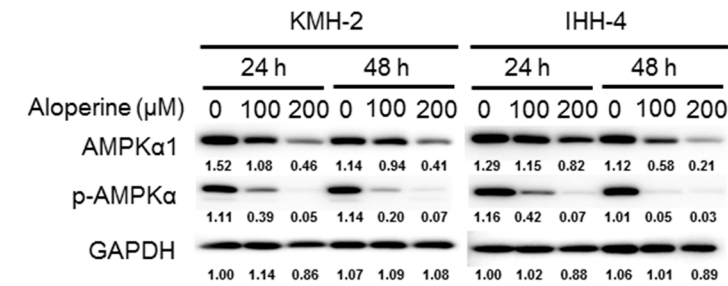


Supplementary Data 1.



Supplementary Data. AMPK Signaling pathway modulation in human thyroid cancer cells following aloperine treatment. Cells were incubated with aloperine and the expression of AMPK and phospho-AMPK were examined. DMSO was used as a negative control. Numbers under the plots indicate the quantification of protein intensity after normalization with GAPDH. Two independent experiments were performed, and results of one of these are shown.