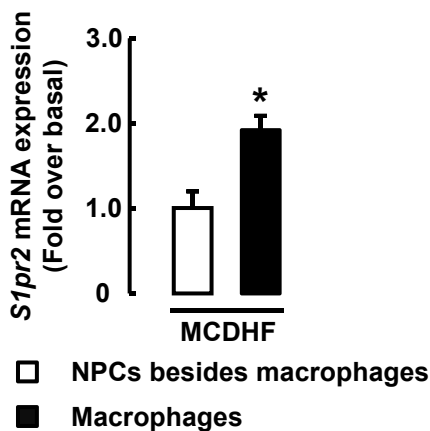
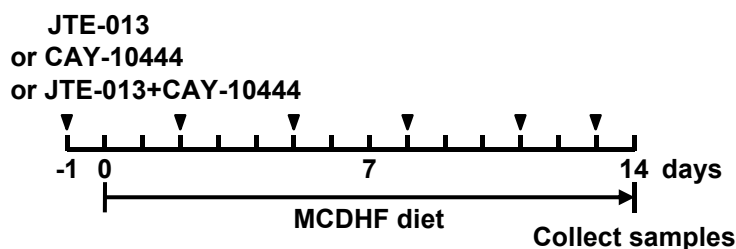
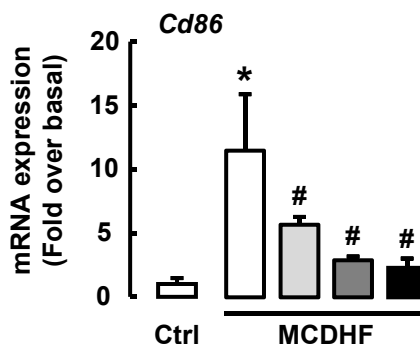
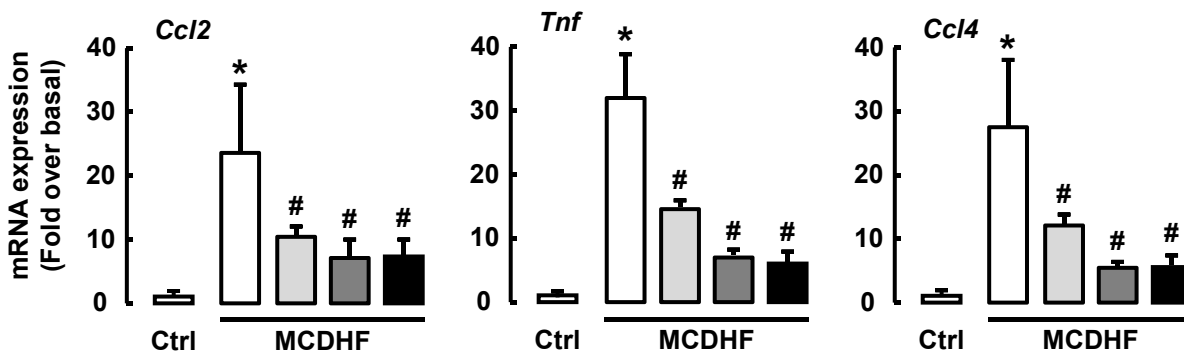
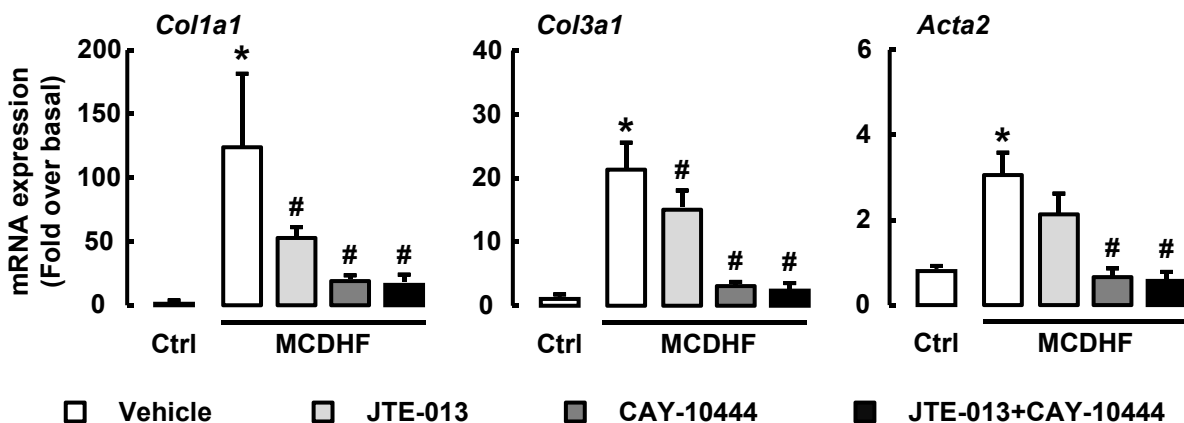


**A****B**

	EGFP <sup>+</sup> cell count	Total cell count	Ratio of EGFP <sup>+</sup> cell
Ctrl	397	574	69.13%
MCDHF diet	475	657	72.39%

**C****D****E****F**

**Supplemental Figure 1. S1PR2/3 blockade decrease hepatic inflammation and fibrogenesis in the MCDHF diet-fed mice.**

(A) MCDHF diet-fed mice were subjected to liver perfusion with 0.4% collagenase buffer. NPCs were separated using low-speed centrifugation and 40% percoll density gradient centrifugation. F4/80 was used to sorted macrophages using FACS. Then S1pr2 mRNA expression in macrophages or remaining NPCs were examined. (B) The ratio of EGFP<sup>+</sup> cells in the blood. (C) Scheme of the mouse model. (D-F) The mRNA expressions of Cd86 (D), pro-inflammatory factors (E), and fibrotic genes (F) in the liver from vehicle, JTE-013-, CAY-10444-, and JTE-013+CAY-10444-treated mice after 14 days of Ctrl or MCDHF diet feeding. Data are presented as the means  $\pm$  SEM. \* $P$ <0.05 vs. Ctrl group. #  $P$ <0.05 vs. MCDHF diet group (n=6 for each group in each experiment).