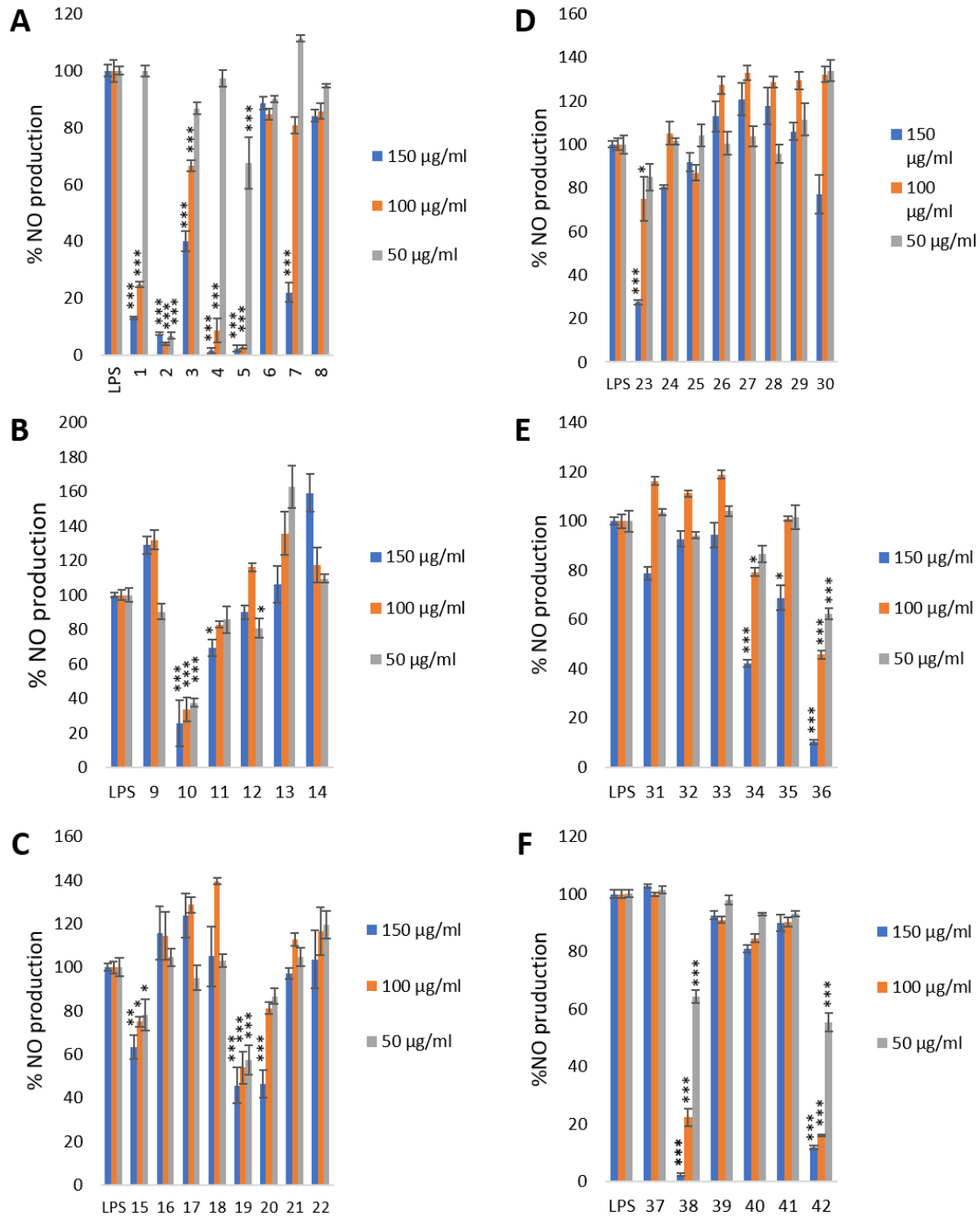


Supplementary Information

The Novel Stable RAW 264.7 Derived Dual-Colour IL-6 and IL-10 Reporters for Anti-Inflammation Screening of Natural Products



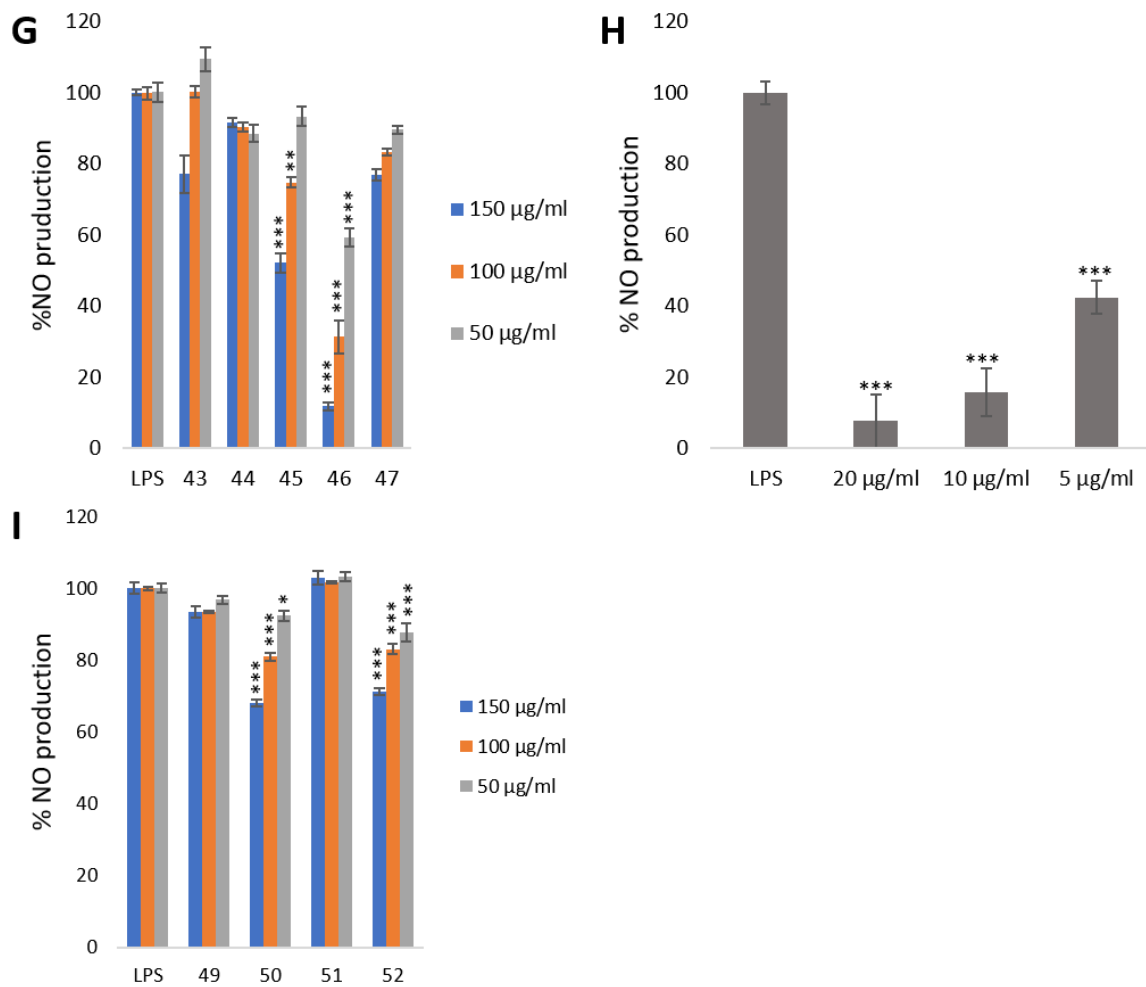


Figure S1. The effect of crude extracts (Table 1) on the inhibition of NO production in LPS treated RAW 264.7 cells. H: Greater Galangal (48) Statistical analyses were performed by means of ANOVA followed by Dunnett's test. Each value represents the mean \pm SD ($n = 4$). * $p < 0.05$, ** $p < 0.01$, *** $p < 0.001$ versus the LPS group.

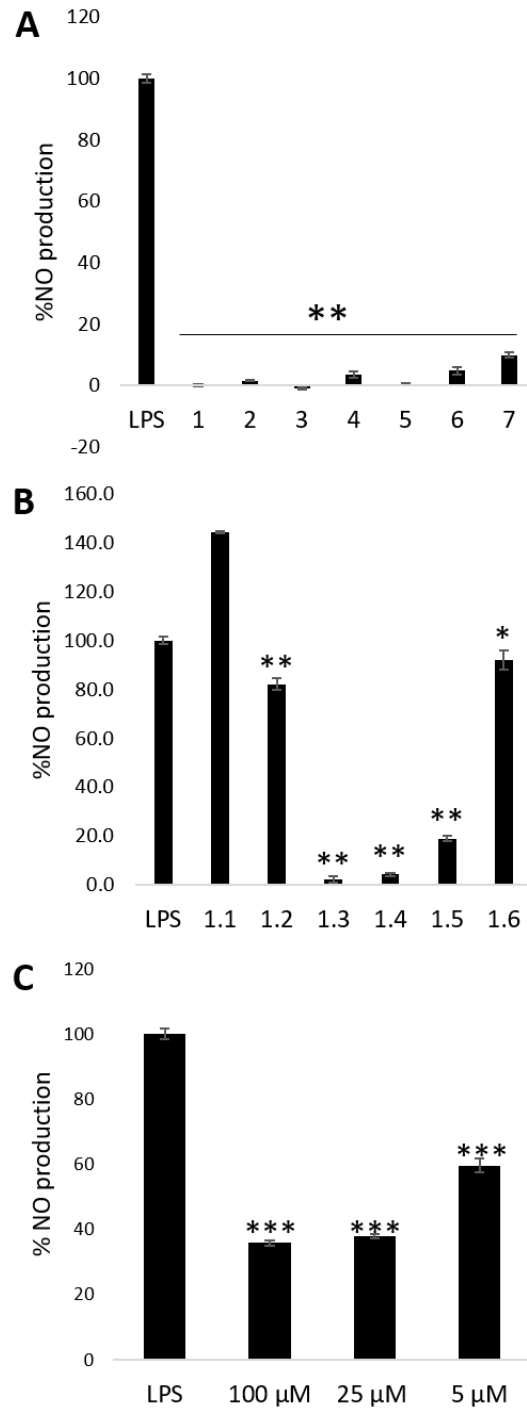


Figure S2. The effect of fractions from Greater Galangal extract on the inhibition of NO production in LPS treated RAW 264.7 cells. **A:** fraction from crude extract **B:** fraction from HPLC **C:** Statistical analyses were performed by means of ANOVA followed by Dunnett's test. Each value represents the mean \pm SD ($n = 4$). * $p < 0.05$, ** $p < 0.001$ versus the LPS group.

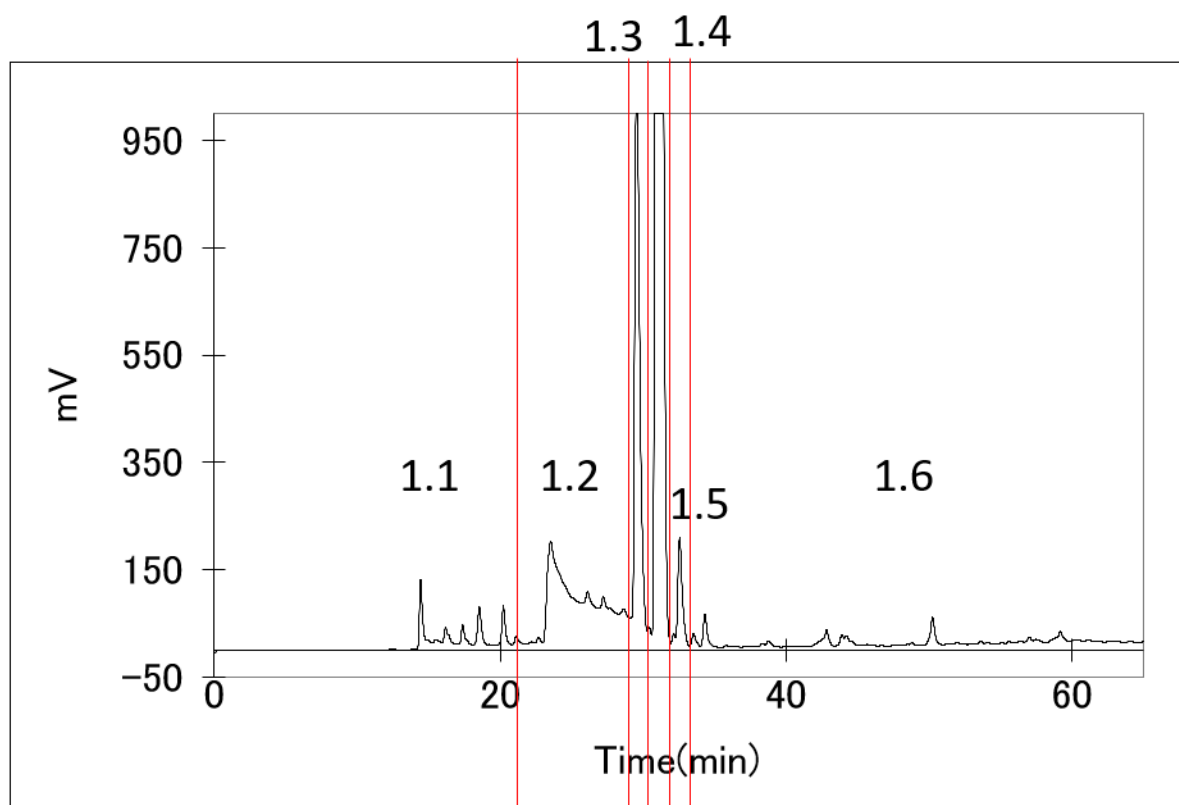


Figure S3. The fractions of crude extract from Greater Galangal by HPLC.

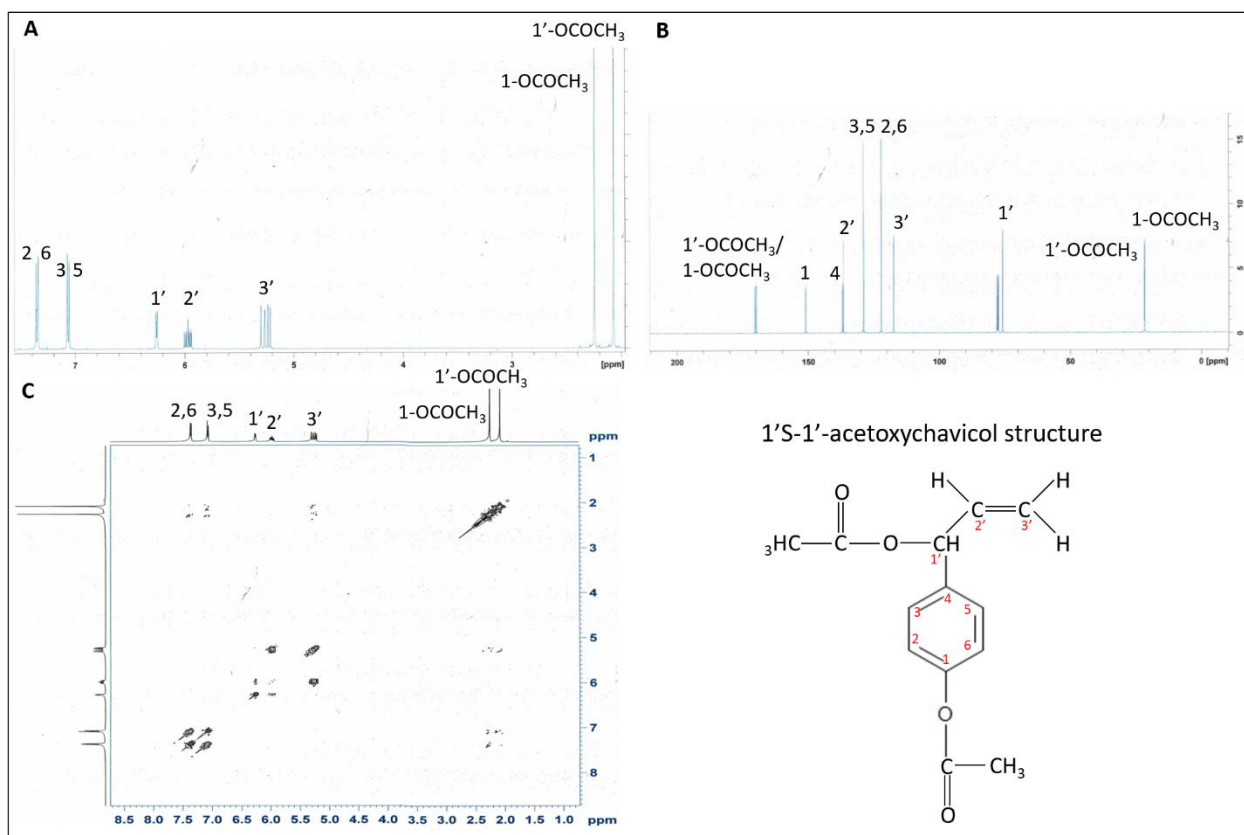


Figure S4. The one-dimensional ^1H and ^{13}C and two-dimensional COSY spectra of linoleic acid from (A, B and C respectively).