

Rolling Circle cDNA Synthesis Uncovers Circular RNA Splice Variants

Aniruddha Das^{1,2}, Pranita K. Rout¹, Myriam Gorospe³, and Amaresh C. Panda^{1,*}

¹ Institute of Life Sciences, Nalco Square, Bhubaneswar, Odisha, India;

² School of Biotechnology, KIIT University, Bhubaneswar, India;

³ Laboratory of Genetics and Genomics, National Institute on Aging, NIH, Baltimore, Maryland, USA.

*Correspondence: amaresh.panda@ils.res.in; Tel: +91 674 230 4314; Fax: +91 674 230 0728

Supplementary Materials: Figure S1. Validation of circRNA expression using divergent primers. **Figure S2.** Splice variants of hsa_circ_0001566. **Figure S3.** Splice variants of hsa_circ_0007822. **Figure S4.** Splice variants of hsa_circ_0084615. **Figure S5.** Splice variants of hsa_circ_0009156. **Figure S6.** Splice variants of hsa_circ_0071410. **Figure S7.** Potential miRNA targets of circRNA splice variants. **Figure S8.** Potential RBPs associated with circRNA splice variants. **Supplementary Table S1.** Sequences of the DNA primers used to in this study. **Supplementary Table S2.** Gene Ontology analysis for target genes of miRNAs associated with has_circ_007127 sequence reported in circBase and the splice variants.

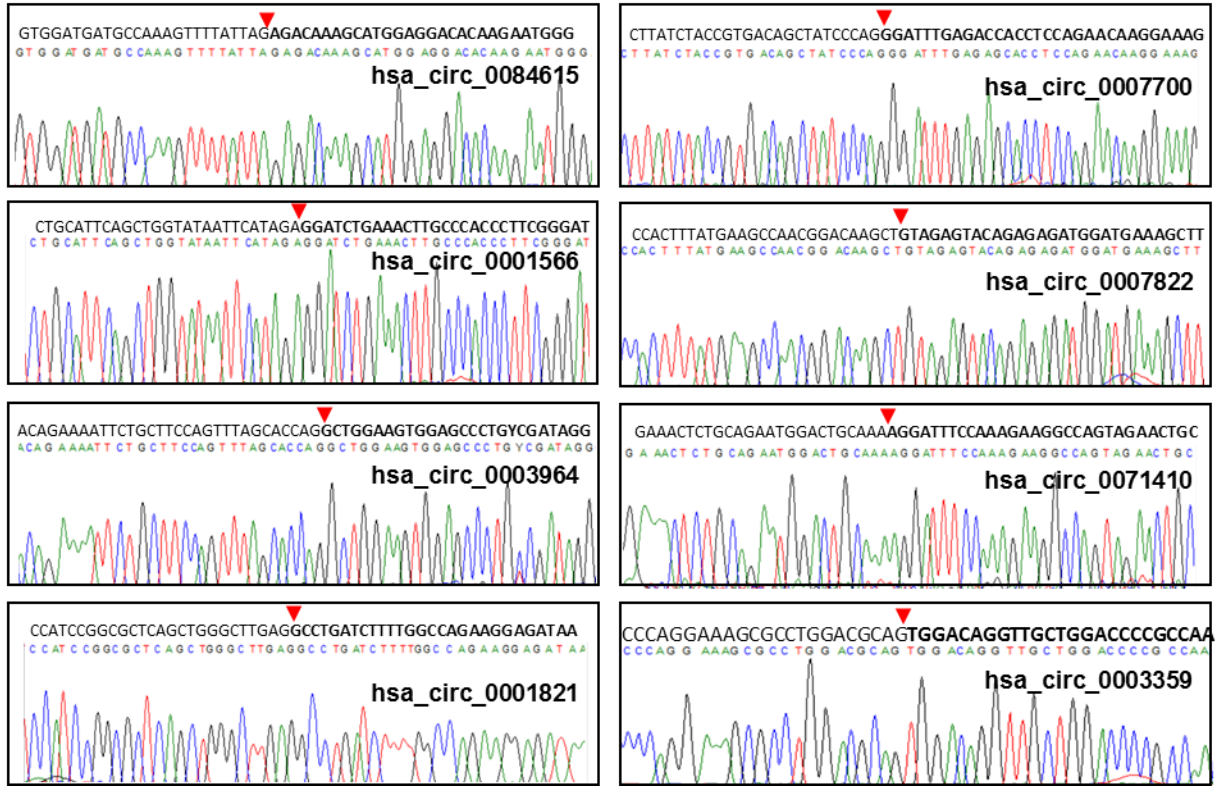


Figure S1. Validation of circRNA expression using divergent primers. RT-PCR products amplified with divergent primers were purified and verified by Sanger sequencing to confirm the identity of the backsplice junction sequences.

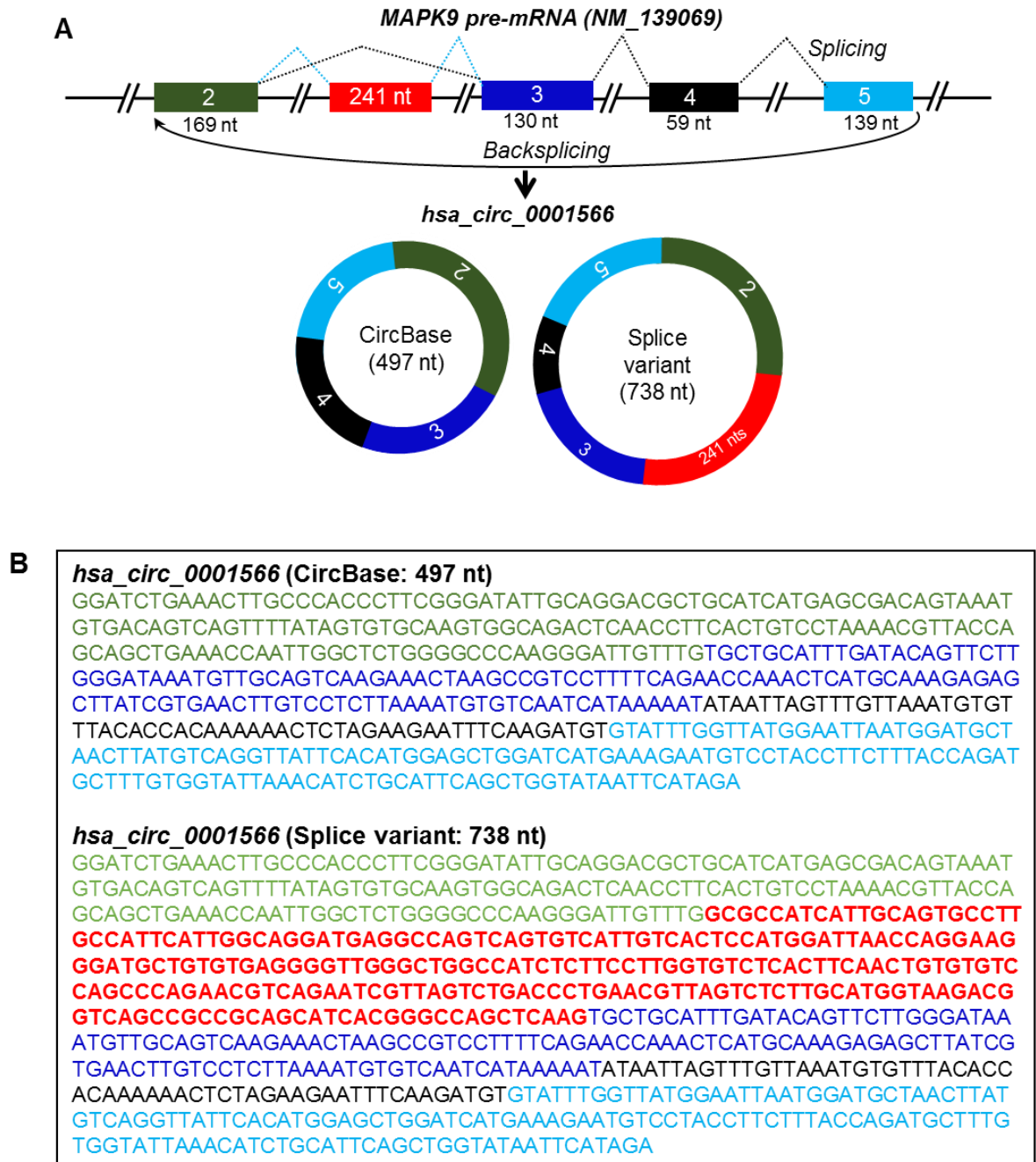


Figure S2. Splice variants of *hsa_circ_0001566*. (A) Schematic representation of the *MAPK9* pre-mRNA and the biogenesis of *hsa_circ_0001566* splice variants produced by alternative splicing. Boxes and straight lines represent exons and introns, respectively. The black dotted lines represent splicing while blue dotted lines represent alternative splicing. (B) Spliced full-length sequences of circBase and splice variants of *hsa_circ_0001566*.

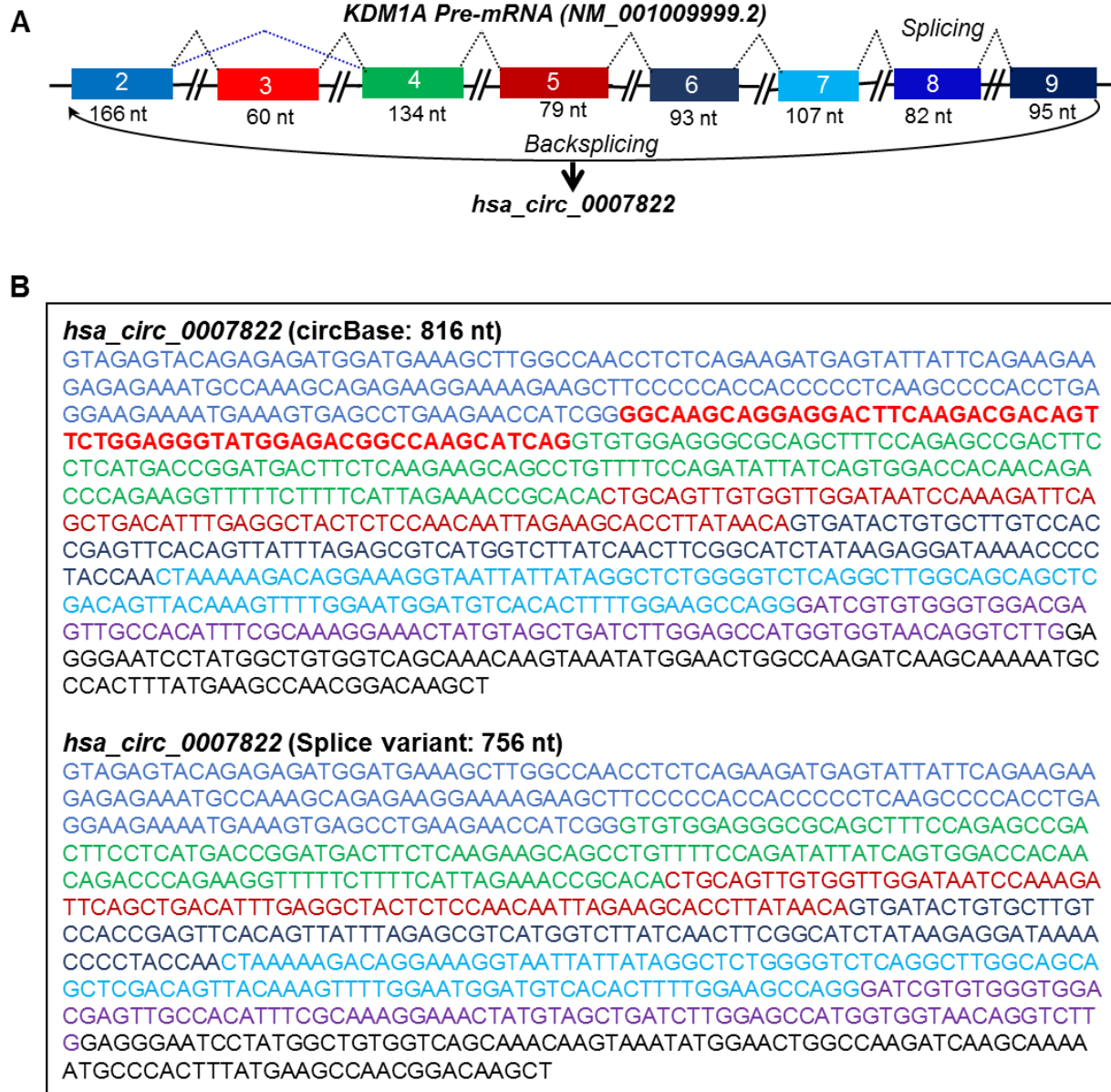


Figure S3. Splice variants of *hsa_circ_0007822*. (A) Schematic representation of the *hsa_circ_0007822* splice variants biogenesis from *KDM1A* pre-mRNA. Boxes and straight lines represent exons and introns, respectively. The black dotted lines represent splicing while blue dotted lines represent alternative splicing. (B) Spliced full-length sequences of splice variants of *hsa_circ_0007822*. The text colors correspond to the colors of the exon boxes in panel A.

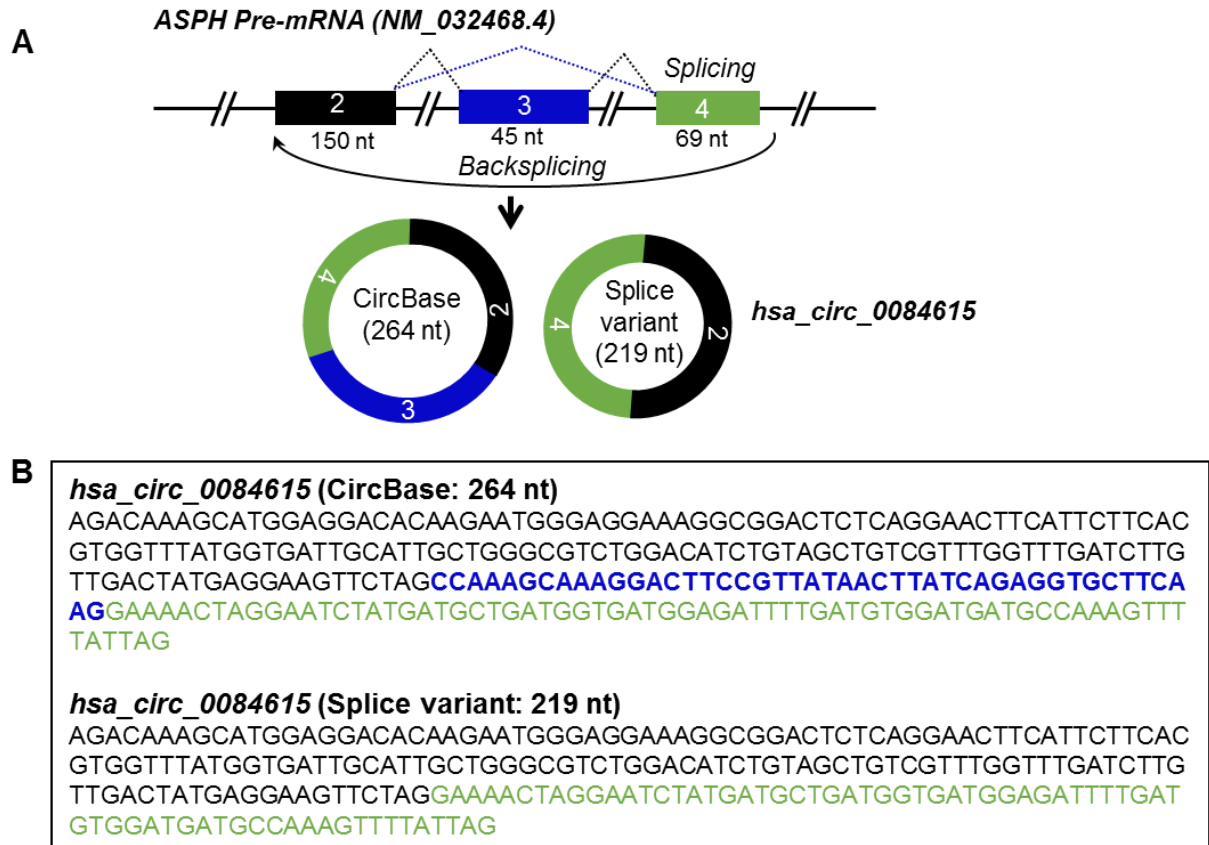


Figure S4. Splice variants of *hsa_circ_0084615*. (A) Schematic representation of the *hsa_circ_0084615* splice variants biogenesis from *ASPH* pre-mRNA. Boxes and straight lines represent exons and introns, respectively. The black dotted lines represent splicing while blue dotted lines represent alternative splicing. (B) Spliced full-length sequences of splice variants of *hsa_circ_0084615*. The text colors correspond to the colors of the exon boxes in panel A.

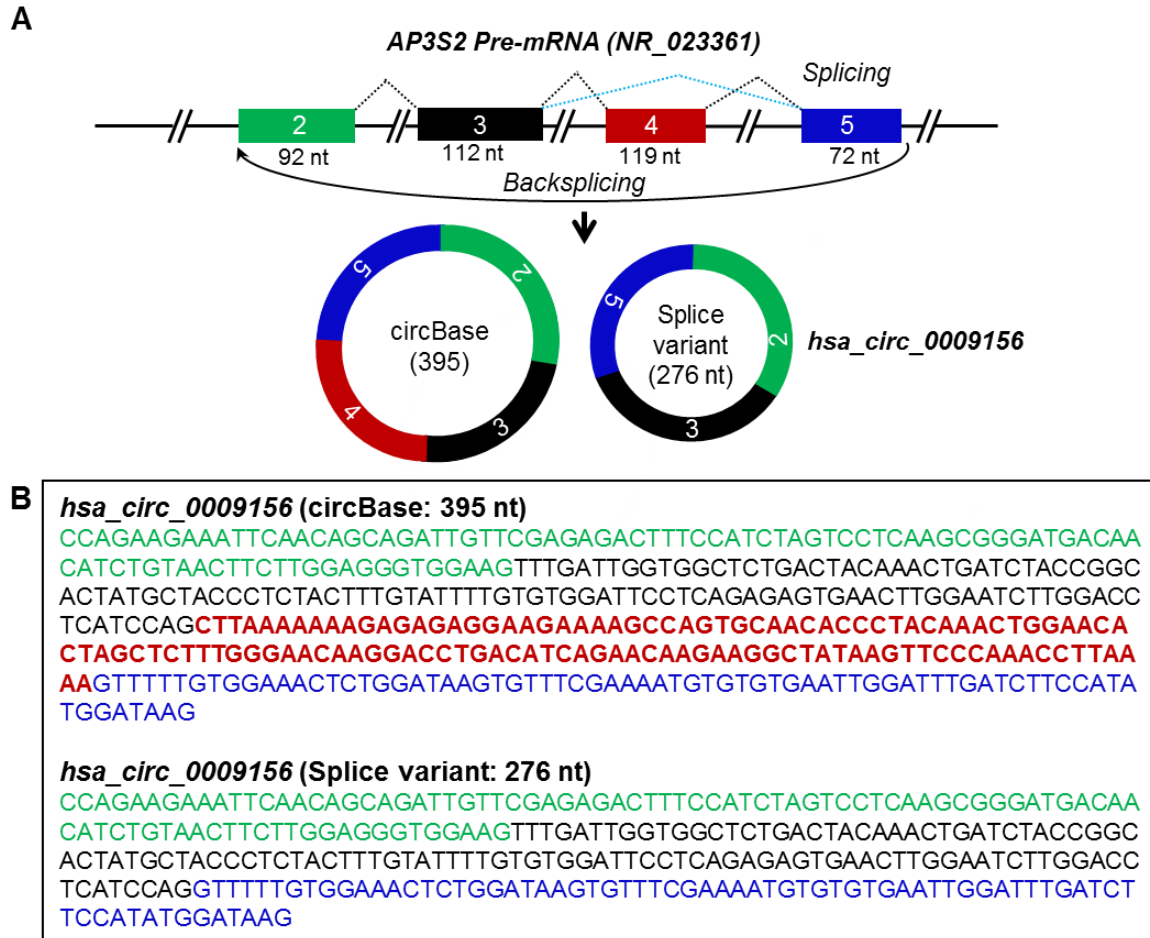


Figure S5. Splice variants of *hsa_circ_0009156*. (A) Schematic representation of the biogenesis of the splice variants of *hsa_circ_0009156* from precursor *AP3S2* pre-mRNA. Boxes and straight lines represent exons and introns, respectively. The black dotted lines represent splicing while blue dotted lines represent alternative splicing. (B) Spliced full-length sequences of splice variants of *hsa_circ_0009156*. The text color corresponds to the color of the exon box in panel A.

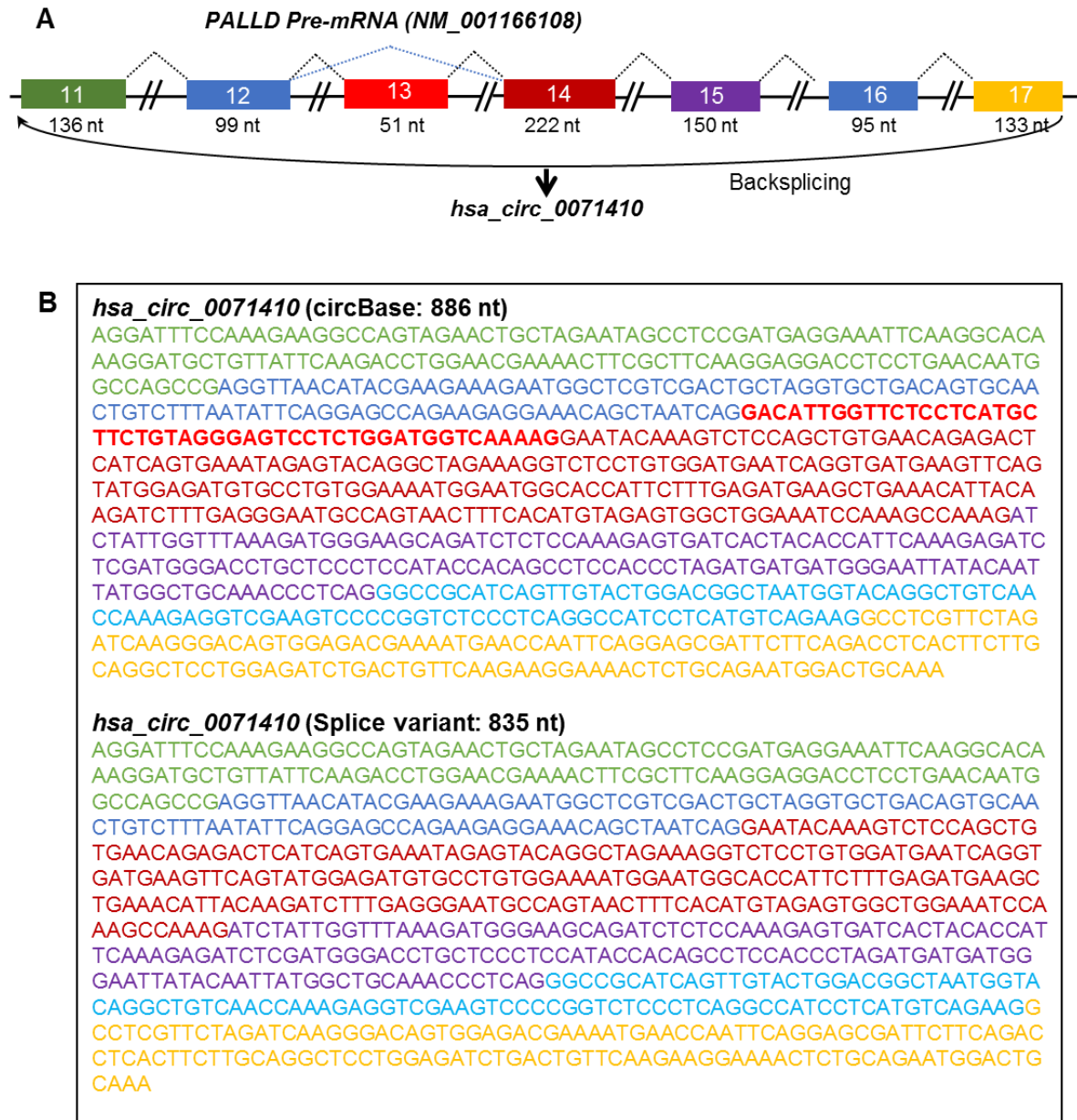


Figure S6. Splice variants of *hsa_circ_0071410*. (A) Schematic representation of the biogenesis of *hsa_circ_0071410* splice variants from *PALLD* pre-mRNA. Boxes and straight lines represent exons and introns, respectively. The black dotted lines represent splicing while blue dotted lines represent alternative splicing. (B) Spliced full-length sequences of splice variants of *hsa_circ_0071410*. The text colors correspond to the colors of the exon boxes in panel A.

hsa_circ_0009156 (miRNA sites)	
Splice variant (276 nt)	circBase (395 nt)
hsa-miR-6503-3p (1)	hsa-miR-6503-3p (1)
hsa-miR-3692-3p (1)	hsa-miR-3692-3p (1)
hsa-miR-490-3p (1)	hsa-miR-320e (1)
	hsa-miR-5195-3p (1)
	hsa-miR-145-5p (1)
	hsa-miR-186-3p (1)

Figure S7. Potential miRNA targets of circRNA splice variants. MicroRNAs predicted by miRDB web tool to target splice variants of *hsa_circ_0009156*.

A		B	
hsa_circ_0009156 (RBP sites)		hsa_circ_0084615 (RBP sites)	
Splice variant (276 nt)	circBase (395 nt)	Splice variant (219 nt)	circBase (264 nt)
PTBP1 (13)	PTBP1 (16)	CUG-BP (16)	CUG-BP (17)
SNRNP70 (2)	SNRNP70 (4)	G3BP2 (1)	G3BP2 (2)
SRSF1 (7)	SRSF1 (5)	MBNL1 (14)	MBNL1 (13)
SRSF10 (4)	SRSF10 (9)	SRSF1 (13)	SRSF1 (12)
SRSF3 (29)	SRSF3 (40)	SRSF2 (17)	SRSF2 (16)
SRSF5 (6)	SRSF5 (7)	SRSF3 (20)	SRSF3 (14)
SRSF7 (5)	SRSF7 (7)	SRSF5 (7)	SRSF5 (5)
TRA2B (9)	TRA2B (19)	TRA2B (4)	TRA2B (3)
YBX2 (3)	YBX2 (7)		DAZAP1 (3)
	CNOT4 (1)		MSI1 (2)
	ENOX1 (2)		PABPC5 (2)
	FMR1 (3)		SRSF7 (1)
	FXR2 (1)		
	HNRNPA1 (3)		
	HNRNPH1 (4)		
	HNRNPK (1)		
	HNRNPL (3)		
	IGF2BP2 (2)		
	IGF2BP3 (2)		
	KHDRBS1 (5)		
	KHDRBS2 (4)		
	KHDRBS3 (6)		
	PABPC1 (7)		
	PABPC4 (7)		
	PABPN1 (9)		
	SART3 (7)		
	SRSF9 (1)		
	TRA2A (4)		

Figure S8. Potential RBPs associated with circRNA splice variants. Selected list of RBPs predicted by RBPmap web tool to target splice variants of *hsa_circ_0009156* (A), and *hsa_circ_0084615* (B).