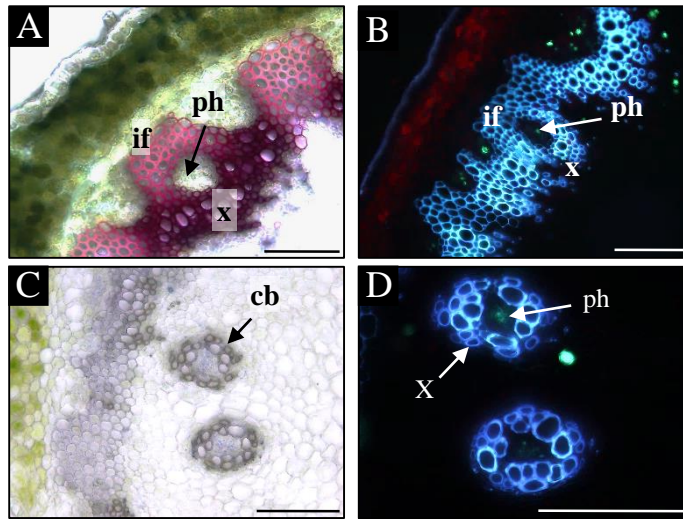


Supplementary Figure S2. Disorders in the collateral structure of the vascular bundles in the *pin1* mutant.



Supplementary Figure S2. Disorders in the collateral structure of the vascular bundles in the *pin1* mutant. Transversal sections through the inflorescence stems stained with floroglucinol (A) and alcian blue (B-D). The regions with phloem being surrounded by interfascicular fibers and xylem (A,B), or only by xylem (C,D). x - xylem, ph - phloem, if - interfascicular fibers, cb - concentric bundles. Scale bar 100µm