

Supplementary Materials

Neutrophil Extracellular Traps as an Adhesion Substrate for Different Tumor Cells Expressing RGD-Binding Integrins

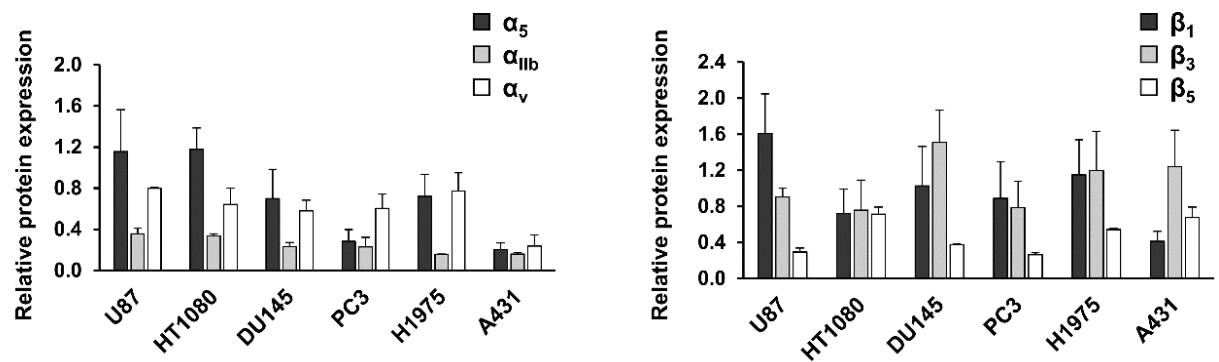


Figure S1. Levels of integrin chains by densitometric analysis of western blots. The optical density of each band was normalized to the same parameter derived from the corresponding actin control using ImageJ software. At least two independent experiment were analyzed, data were pooled and expressed as mean \pm SE.