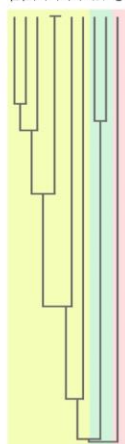


۲۲



2

**Figure S1.** (A) Multiple sequence alignment of the following protein sequences: Homo sapiens (Human) ZNF461, Rattus norvegicus (Rat) GIOT1, Rattus norvegicus (Rat) GIOT2, Canis lupus familiaris (Dog) ZNF461, Bos taurus (Bovine) ZNF461, Sus scrofa (Pig) ZNF461, Ovis aries (Sheep) ZNF461, Tursiops truncatus (Dolphin) ZNF461, Pan paniscus (Pygmy chimpanzee) ZNF461 and Homo sapiens (Human) ZNF460. Identical sequences are marked with a dark grey colour and an asterisk. Similar sequences are indicated by a light grey colour and a colon or dot depending on the degree of similarity. Conservative zinc fingers domains were marked in purple. (B) phylogenetic tree generated from a multiple sequence alignment. Three independent clusters are presented in different colours.