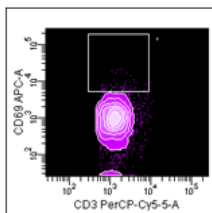
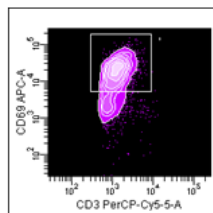


JRT3-CD8/2D

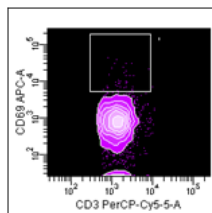
Ctrl
CD69+: 2.05%



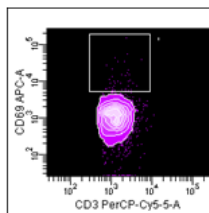
Abacavir 10 μ g/ml
CD69+: 72.01%



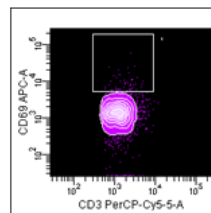
SPT5a 976 20 μ g/ml
CD69+: 1.95



HIV 153 20 μ g/ml
CD69+: 2.45%

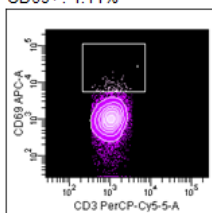


HSV1/2 230 20 μ g/ml
CD69+: 2.54%

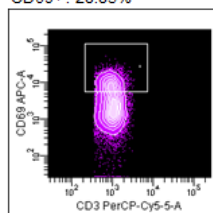


JRT3-CD8/UL3L

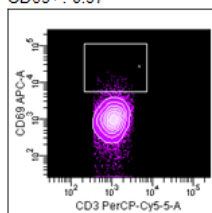
Ctrl
CD69+: 1.11%



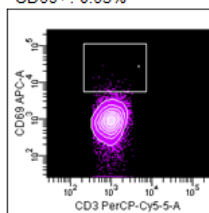
Abacavir 10 μ g/ml
CD69+: 28.85%



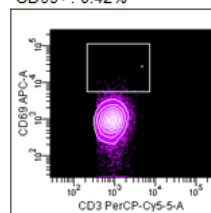
SPT5a 976 20 μ g/ml
CD69+: 0.97



HIV 153 20 μ g/ml
CD69+: 0.63%



HSV1/2 230 20 μ g/ml
CD69+: 0.42%



JRT3-CD8 cells expressing TCR 2D (upper panel) and TCR UL3L (lower panel) were stimulated with abacavir or with peptides in the presence of 721.221 cells expressing HLA-b*57:01. After 16 hours of incubation, activation was monitored by CD69 upregulation using flow cytometry. JRT3-CD8 cells expressing TCR 2D or UL3L could be activated by abacavir but not by the tested peptides. Percentages indicate the proportion of events expressing CD69.