

A07\_1(c7)

0.0 mk5734\_A07  
2.1 mk5733\_A07  
3.4 mk5732\_A07  
6.4 MulMa154\_A07  
12.3 mk5722\_A07  
12.8 mk5723\_A07  
12.8 mk5718\_A07  
16.5 mk5721\_A07 mk5719\_A07  
18.9 mk5720\_A07  
23.8 mk5717\_A07 mk5716\_A07  
26.3 mk5715\_A07  
26.3 mk5714\_A07  
28.0 mk5712\_A07  
28.1 mk5711\_A07  
28.4 mk5710\_A07  
29.6 mk5707\_A07 mk5708\_A07  
30.6 mk5709\_A07  
30.6 mk5713\_A07  
31.0 mk5706\_A07  
31.9 mk5704\_A07  
32.5 mk5696\_A07  
32.7 mk5698\_A07  
33.5 mk5687\_A07  
33.6 mk5688\_A07  
34.0 mk5690\_A07 mk5689\_A07  
34.4 mk5699\_A07 mk5700\_A07  
34.6 mk5692\_A07  
34.7 mk5691\_A07  
34.9 mk5686\_A07  
35.2 mk5693\_A07 mk5694\_A07  
35.3 mk5695\_A07 mk5697\_A07  
35.9 mk5701\_A07  
36.6 mk5703\_A07 mk5702\_A07  
42.7 mk5681\_A07 mk5680\_A07  
42.8 mk5679\_A07  
44.1 MulMa150\_A07  
44.2 MulMa151\_A07 MulMa153-m\_A07  
44.3 MulMa152-m\_A07  
45.1 MulMa146-m\_A07  
46.0 MulMa140\_A07  
46.3 MulMa144\_A07 MulMa145\_A07  
47.1 MulMa139-m\_A07  
47.4 MulMa142-m\_A07  
48.1 MulMa143\_A07  
48.2 MulMa538  
49.3 MulMa148-m\_A07  
49.4 MulMa149-m\_A07  
51.0 mk5684\_A07 mk5685\_A07  
51.7 mk5683\_A07 mk5682\_A07  
52.7 MulMa147\_A07  
56.2 mk5653\_A07  
59.1 mk5674\_A07 mk5673\_A07  
59.6 mk5672\_A07  
59.7 mk5675\_A07  
59.9 mk5668\_A07  
61.0 mk5637\_A07  
61.4 mk5638\_A07  
62.6 mk5677\_A07  
62.9 mk5676\_A07  
63.1 mk5678\_A07  
66.4 MulMa141-m\_A07  
69.2 MulMa131\_A07  
69.4 MulMa133-m\_A07  
69.7 MulMa360-m  
69.8 MulMa136\_A07  
69.9 MulMa138-m\_A07  
70.2 MulMa1-m  
70.4 MulMa645-m  
71.2 MulMa134\_A07  
71.5 MulMa135\_A07  
71.7 MulMa137-m\_A07  
71.8 MulMa539-m  
72.0 MulMa32  
72.2 MulMa132-m\_A07  
72.5 MulMa50-m MulMa53  
72.6 MulMa129\_A07  
72.7 MulMa51  
72.8 MulMa130\_A07  
74.9 mk13195  
75.2 mk6338  
75.8 mk5633\_A07  
75.9 mk5621\_A07  
77.4 mk18748  
77.5 mk19970 mk5620\_A07  
77.6 mk5619\_A07  
80.0 mk5547\_A07  
80.4 mk5550\_A07  
80.8 mk5551\_A07 mk5548\_A07  
81.0 mk5545\_A07  
81.3 mk5443\_A07  
81.5 mk19827  
83.4 mk5557\_A07  
85.4 mk5478\_A07  
85.5 mk5481\_A07  
93.8 mk5408\_A07  
93.8 mk5407\_A07  
93.9 mk5417\_A07 mk5416\_A07  
93.9 mk5414\_A07 mk5415\_A07  
94.5 mk5411\_A07 mk5410\_A07  
94.5 mk5413\_A07 mk5412\_A07  
95.7 mk5406\_A07  
96.9 mk5418\_A07 mk5409\_A07  
98.1 mk5405\_A07  
99.5 mk5404\_A07

qEC\_A07\_110

qGR\_A07\_110

A07\_2(c7)

102.0 MulMa121-m\_A07  
102.3 MulMa120-m\_A07 MulMa119-m\_A07  
102.5 MulMa124-m\_A07 MulMa123-m\_A07  
102.5 MulMa127\_A07 MulMa122-m\_A07  
102.7 MulMa117-m\_A07  
102.8 MulMa118-m\_A07  
102.8 MulMa128-m\_A07  
103.9 MulMa126-m\_A07 MulMa125-m\_A07  
105.2 MulMa155-m  
108.2 MulMa115-m\_A07  
108.4 MulMa116\_A07  
108.9 MulMa107-m\_A07  
109.0 MulMa113\_A07  
109.5 MulMa106\_A07 MulMa105-m\_A07  
109.7 MulMa103-m\_A07 MulMa104\_A07  
110.6 MulMa111\_A07 MulMa109-m\_A07  
110.6 MulMa108\_A07 MulMa112\_A07  
110.8 MulMa110\_A07  
111.1 MulMa114\_A07  
111.2 MulMa103-m\_A07  
111.8 mk5398\_A07  
113.3 mk5396\_A07 mk5397\_A07  
114.2 mk5395\_A07  
115.1 mk5374\_A07  
115.4 mk5369\_A07  
116.7 mk5387\_A07 mk5386\_A07  
117.3 mk5385\_A07 mk5384\_A07  
117.3 mk5383\_A07 mk5388\_A07  
117.5 mk5382\_A07  
117.9 mk5393\_A07 mk5394\_A07  
120.9 mk5392\_A07  
120.9 mk5399\_A07  
121.4 mk5391\_A07  
121.5 mk5390\_A07  
121.5 mk5372\_A07 mk5373\_A07  
126.4 mk5330\_A07 mk5329\_A07  
126.5 mk5332\_A07  
126.7 mk5341\_A07 mk5342\_A07  
127.0 mk5362\_A07 mk5360\_A07  
127.0 mk5349\_A07 mk5348\_A07  
127.2 mk5340\_A07  
127.4 mk5355\_A07  
127.6 mk5356\_A07  
127.7 mk5357\_A07 mk5354\_A07  
128.2 mk5353\_A07  
128.9 mk5367\_A07 mk5366\_A07  
129.5 mk5359\_A07 mk5358\_A07  
130.2 mk5346\_A07 mk5345\_A07  
130.5 mk5344\_A07 mk5343\_A07  
131.0 mk5351\_A07 mk5350\_A07  
131.5 mk5384\_A07  
131.5 mk5365\_A07 mk5363\_A07  
132.5 mk5338\_A07 mk5337\_A07  
133.1 mk5339\_A07  
133.2 mk5352\_A07  
133.2 mk5334\_A07 mk5333\_A07  
133.4 mk5336\_A07 mk5335\_A07  
137.6 mk5347\_A07  
138.1 mk5326\_A07  
148.8 mk5327\_A07 mk5328\_A07  
148.8 MulMa101\_A07 MulMa99\_A07  
154.9 MulMa098\_A07 MulMa100\_A07  
158.3 mk5801  
159.7 mk5290\_A07 mk5291\_A07  
159.7 mk5283\_A07  
171.3 MulMa07\_A07 MulMa96\_A07  
171.3 MulMa95\_A07  
172.3 MulMa04\_A07 MulMa93-m\_A07  
173.6 MulMa02-m\_A07  
173.6 MulMa06 MulMa89-m\_A07  
174.0 MulMa86-m\_A07 MulMa87-m\_A07  
174.5 MulMa13 MulMa11  
174.5 MulMa10 MulMa12  
174.9 MulMa8-m MulMa9-m  
175.2 MulMa7-m  
175.2 MulMa3 MulMa5  
175.2 MulMa2 MulMa4  
175.7 MulMa01\_A07  
175.9 MulMa90-m\_A07  
179.5 mk5251\_A07  
181.2 mk5248\_A07 mk5247\_A07  
182.9 MulMa85\_A07  
183.3 mk5255\_A07  
188.0 mk5268\_A07  
189.0 mk5262\_A07  
189.6 mk5256\_A07 mk5257\_A07  
190.3 mk5269\_A07  
190.4 mk5271\_A07 mk5272\_A07  
192.6 mk5270\_A07  
192.6 mk5269\_A07  
195.4 mk5260\_A07 mk5261\_A07  
195.8 mk5258\_A07  
196.1 mk5259\_A07  
196.5 mk5264\_A07  
196.6 mk5267\_A07 mk5266\_A07  
200.6 mk5263\_A07 mk5265\_A07  
201.9 mk5259\_A07  
201.6 mk5241\_A07  
202.5 mk5240\_A07  
205.9 mk5238\_A07  
mk5802

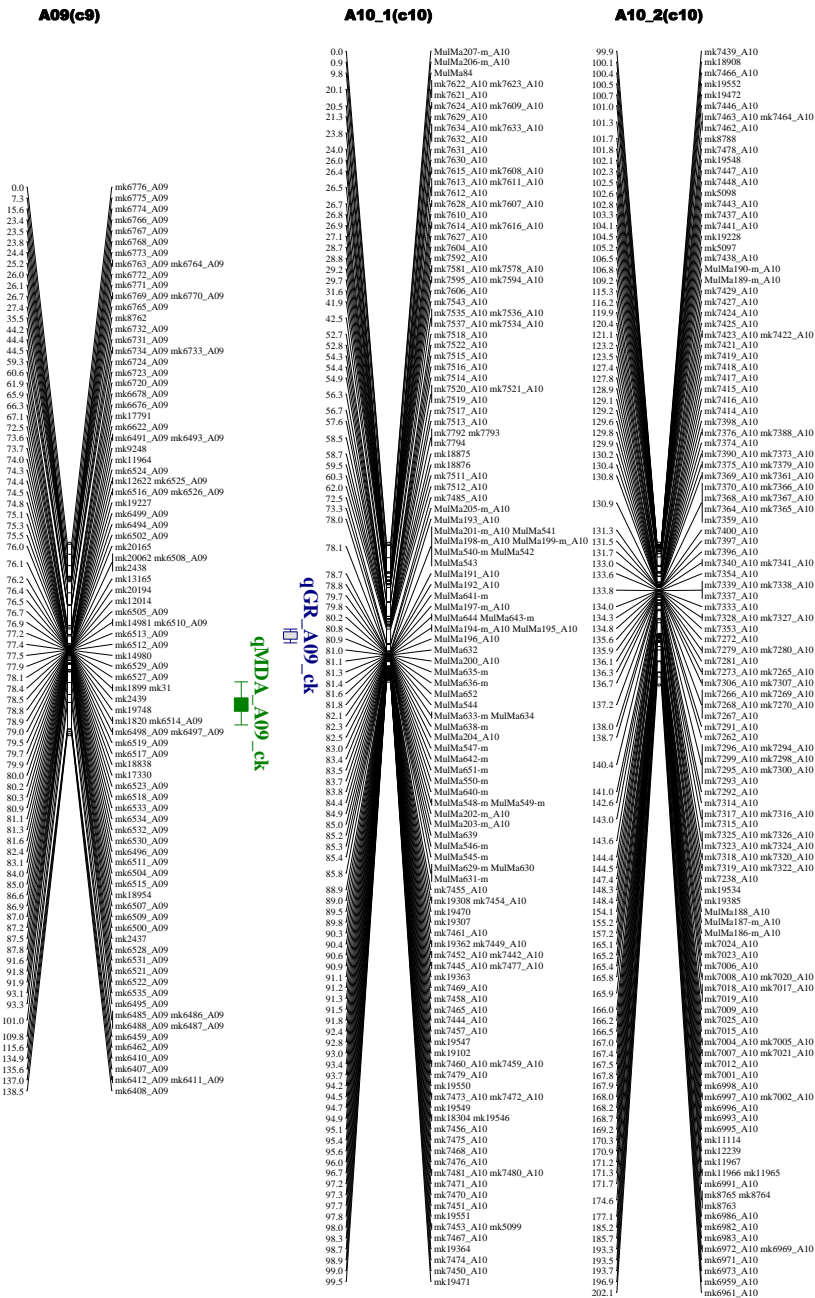
A08(c8)

0.0 MulMa156\_A08  
0.8 mk6187\_A08 mk6186\_A08  
6.8 MulMa161\_A08  
6.9 MulMa160-m\_A08 MulMa161\_A08  
7.6 MulMa162\_A08  
7.6 mk6204\_A08  
8.3 MulMa164\_A08  
8.9 MulMa165-m\_A08 MulMa166\_A08  
21.1 MulMa168\_A08  
22.5 MulMa361  
23.2 MulMa167\_A08  
24.3 MulMa170\_A08  
24.6 MulMa169-m\_A08  
30.1 mk6214\_A08 mk6213\_A08  
31.0 mk6215\_A08  
31.1 mk6212\_A08  
31.5 mk6208\_A08  
41.7 MulMa177\_A08 MulMa174\_A08  
41.8 MulMa176\_A08 MulMa173\_A08  
41.8 MulMa172\_A08  
41.9 MulMa180-m\_A08  
49.8 MulMa661  
49.9 MulMa665 MulMa666-m  
50.2 MulMa661  
50.6 MulMa182\_A08  
51.0 MulMa663  
51.1 MulMa159\_A08  
68.9 MulMa157\_A08 MulMa158-m\_A08  
88.0 mk6167\_A08  
88.3 mk6166\_A08  
94.4 mk20153  
94.8 mk6178\_A08  
95.4 mk6176\_A08  
95.8 mk6170\_A08  
96.2 mk20009  
96.4 mk6168\_A08  
96.5 mk6173\_A08 mk6175\_A08  
96.7 mk6171\_A08 mk6172\_A08  
96.9 mk6169\_A08  
103.7 mk5975\_A08  
103.8 mk6033\_A08 mk6022\_A08  
104.0 mk6042\_A08  
104.0 mk6009\_A08  
105.1 mk6048\_A08  
110.8 mk6116\_A08  
110.9 mk6115\_A08  
111.3 mk6118\_A08 mk6119\_A08  
111.4 mk6117\_A08  
112.1 mk6120\_A08  
mk6121\_A08 mk6122\_A08

qCH\_A08 ck

qGR\_A08 ck

qEC\_A08 ck



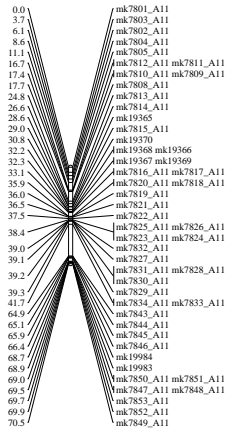
qMDA\_A10\_110

qDLW\_A10\_150.1

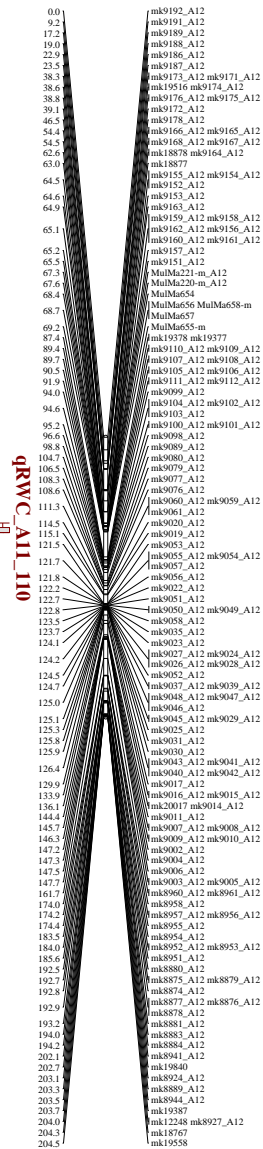
qDLW\_A10\_150.2

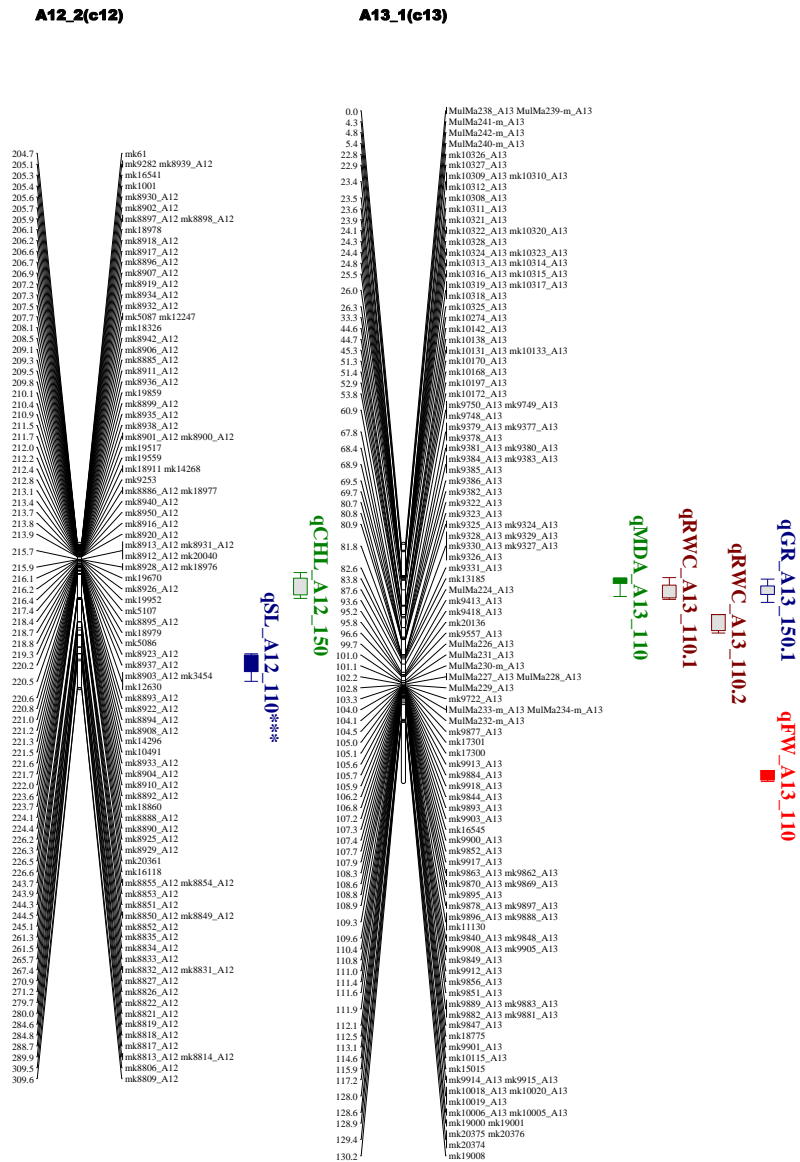


A11(c11)

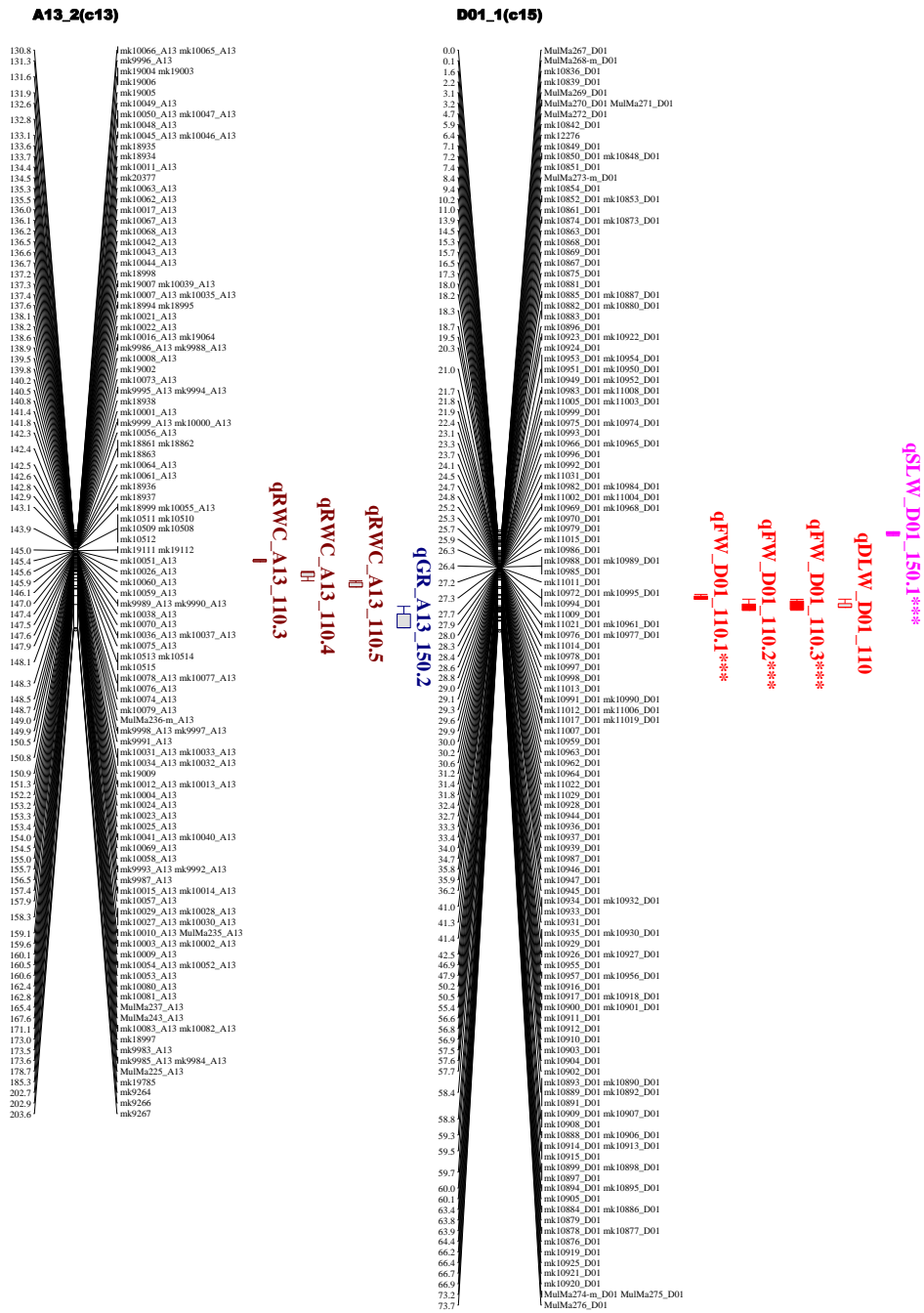


A12\_1(c12)









## D01\_2(c15)

77.7	mk10832_D01
82.3	MulMa266-m_D01
86.7	mk10840_D01
87.1	mk10838_D01
87.9	mk10837_D01
88.0	MulMa265-m_D01
90.4	mk10829_D01 mk10830_D01
90.9	mk10766_D01
91.0	mk10765_D01
91.5	mk10755_D01
91.6	mk10751_D01
92.1	mk10753_D01 mk10754_D01
93.1	mk10755_D01 mk10758_D01
93.3	mk10761_D01
93.8	mk10713_D01
94.3	mk10750_D01 mk10782_D01
94.5	mk10807_D01
94.6	mk10770_D01 mk10798_D01
95.2	mk10711_D01 mk10711_D01
95.7	mk10767_D01
95.9	mk10806_D01 mk10803_D01
96.2	mk10824_D01 mk10826_D01
96.2	mk10825_D01
97.1	mk10757_D01
97.2	mk10756_D01
98.0	mk10734_D01
98.4	mk10819_D01 mk10820_D01
98.9	mk10796_D01
99.1	mk10823_D01
99.8	mk10794_D01
100.8	mk10726_D01
101.0	mk10727_D01 mk10729_D01
101.7	mk10728_D01
102.3	mk10725_D01
102.8	mk10731_D01 mk10730_D01
102.8	mk10720_D01
102.9	mk10724_D01
103.0	mk10717_D01 mk10718_D01
103.2	mk10719_D01
103.5	mk10707_D01
103.6	mk10714_D01
104.0	mk10715_D01 mk10716_D01
104.3	mk10796_D01
104.6	mk10791_D01
105.1	mk10808_D01 mk10809_D01
105.1	mk10709_D01 mk10708_D01
106.1	mk10710_D01
107.5	mk10746_D01 mk10733_D01
107.8	mk10736_D01
108.1	mk10818_D01
108.3	mk10705_D01 mk10704_D01
109.3	mk10750_D01 mk10752_D01
109.8	mk10745_D01
110.0	mk10723_D01
110.5	mk10759_D01
110.9	mk10721_D01 mk10722_D01
112.0	mk10787_D01 mk10785_D01
112.3	mk10786_D01
112.7	mk10762_D01
112.7	mk10788_D01
112.8	mk10773_D01
113.0	mk10827_D01
113.4	mk10783_D01 mk10784_D01
114.7	mk10816_D01
114.8	mk10815_D01
114.9	mk10814_D01
116.0	mk10797_D01
116.4	mk10776_D01
116.7	mk10763_D01 mk10802_D01
116.8	mk10804_D01 mk10805_D01
117.0	mk10764_D01
117.3	mk10781_D01
117.7	mk10799_D01 mk10800_D01
118.0	mk10810_D01
118.2	mk10793_D01 mk10795_D01
118.2	mk10777_D01 mk10778_D01
118.3	mk10768_D01 mk10779_D01
118.5	mk10817_D01
119.0	mk10790_D01
119.8	mk10828_D01
121.9	mk10771_D01 mk10772_D01
121.9	mk10672_D01 mk10671_D01
122.3	mk10670_D01
122.6	mk10657_D01
122.7	mk10678_D01
122.7	mk10677_D01
122.9	mk10682_D01
123.2	mk10669_D01
123.7	mk10660_D01
124.1	mk10680_D01
124.6	mk10662_D01 mk10661_D01
125.3	mk10702_D01
125.5	mk10703_D01
125.7	mk10696_D01
125.8	mk10701_D01
126.2	mk10700_D01 mk10699_D01
127.1	mk10686_D01 mk10687_D01
127.9	mk10665_D01 mk10664_D01
127.9	mk10666_D01 mk10665_D01
128.3	mk10673_D01
128.7	mk10690_D01 mk10691_D01
128.8	mk10688_D01
128.8	mk10684_D01 mk10685_D01
129.3	mk10693_D01 mk10692_D01
129.5	mk10683_D01 mk10694_D01
129.8	mk10695_D01
129.3	mk10658_D01
129.5	mk10676_D01
130.0	mk10679_D01
131.5	mk1007
134.3	mk10656_D01
134.5	mk10654_D01 mk10655_D01
136.0	mk10653_D01
137.4	MulMa265-m_D01
137.5	MulMa260_D01 MulMa261-m_D01
138.2	MulMa264_D01
138.3	MulMa262_D01
144.1	mk10652_D01

## D02\_1(c14)

0.0	MulMa355_D02
5.4	mk11803_D02
5.7	mk11801_D02 mk11799_D02
5.9	mk11800_D02
5.9	mk11802_D02
19.4	MulMa346_D02
19.5	MulMa344-m_D02 MulMa343-m_D02
19.5	MulMa345-m_D02
19.9	MulMa342-m_D02 MulMa341-m_D02
23.6	MulMa347_D02
24.4	MulMa352_D02
24.8	MulMa353-m_D02 MulMa354_D02
25.8	MulMa349_D02
25.8	MulMa350-m_D02 MulMa348-m_D02
26.3	MulMa351-m_D02 mk11781_D02
33.4	mk11784_D02
39.1	mk11779_D02
41.9	mk11772_D02 mk11774_D02
42.1	mk11773_D02 mk11771_D02
43.1	mk11770_D02
44.1	mk11729_D02 mk11730_D02
44.1	mk11777_D02 mk11776_D02
45.9	mk11775_D02
46.4	mk11747_D02 mk11750_D02
46.7	mk11749_D02 mk11748_D02
46.7	mk11731_D02
46.7	mk11732_D02
47.6	mk11733_D02 mk11754_D02
48.1	mk11744_D02 mk11743_D02
48.1	mk11728_D02
48.2	mk11745_D02
48.7	mk11746_D02
50.3	mk11727_D02
52.1	mk11725_D02
55.0	mk11752_D02 mk11751_D02
55.3	mk11753_D02
60.0	mk11736_D02 mk11737_D02
60.4	mk11739_D02 mk11740_D02
60.9	mk11742_D02 mk11738_D02
61.0	mk11741_D02
61.2	mk11760_D02 mk11763_D02
61.2	mk11762_D02 mk11761_D02
61.5	mk11765_D02 mk11762_D02
61.5	mk11766_D02
61.5	mk11768_D02 mk11767_D02
61.5	mk11757_D02 mk11758_D02
61.5	mk11759_D02 mk11756_D02
61.5	mk11755_D02
61.5	mk11769_D02
61.5	mk11710_D02
61.5	mk11640_D02 mk11643_D02
61.5	mk11642_D02 mk11641_D02
61.5	MulMa316-m_D02 MulMa317_D02
61.5	mk11531_D02
61.5	mk11531_D02
61.5	mk11527_D02
61.5	mk11528_D02
61.5	mk11529_D02
61.5	MulMa327_D02
61.5	MulMa321-m_D02 MulMa319_D02
61.5	MulMa320_D02
61.5	MulMa326-m_D02
61.5	MulMa334-m_D02
61.5	MulMa329-m_D02 MulMa331_D02
61.5	MulMa330-m_D02 MulMa336-m_D02
61.5	MulMa333-m_D02
61.5	MulMa339_D02 MulMa338-m_D02
61.5	MulMa337-m_D02
61.5	MulMa328-m_D02
61.5	MulMa340-m_D02
61.5	MulMa332_D02 MulMa335_D02
61.5	MulMa318_D02 MulMa325_D02
61.5	MulMa323-m_D02 MulMa322_D02
61.5	MulMa324_D02
61.5	mk11625_D02 mk11619_D02
61.5	mk11621_D02 mk11620_D02
61.5	mk11623_D02
61.5	mk11618_D02
61.5	mk11644_D02
61.5	mk11650_D02 mk11649_D02
61.5	mk11648_D02
61.5	mk11645_D02
61.5	mk11647_D02
61.5	mk11652_D02 mk11651_D02
61.5	mk11657_D02
61.5	mk11646_D02
61.5	mk11639_D02
61.5	mk11636_D02
61.5	mk11634_D02
61.5	mk11632_D02
61.5	mk11633_D02
61.5	mk11637_D02
61.5	mk11638_D02
61.5	mk11624_D02
61.5	mk11617_D02
61.5	mk11616_D02
61.5	mk11615_D02
61.5	mk11622_D02
61.5	mk11614_D02
61.5	mk11602_D02
61.5	mk11603_D02
61.5	mk11595_D02
61.5	mk11606_D02 mk11607_D02
61.5	mk11599_D02
61.5	mk11589_D02
61.5	mk11589_D02 mk11593_D02
61.5	mk11588_D02 mk11590_D02
61.5	mk11592_D02 mk11591_D02
61.5	mk11579_D02
61.5	mk11572_D02
61.5	mk11587_D02
61.5	mk11605_D02

qSLW\_D01\_150.2\*\*\*

qFW\_D01\_150.2\*\*\*

qFW\_D01\_150.1\*\*\*

qSLW\_D01\_150.2\*\*\*

qFW\_D01\_150.2\*\*\*

qFW\_D01\_150.1\*\*\*

qFW\_D01\_150.2\*\*\*

qFW\_D01\_150.2\*\*\*

qFW\_D01\_150.2\*\*\*

qFW\_D01\_150.2\*\*\*

qFW\_D01\_150.2\*\*\*

qFW\_D01\_150.2\*\*\*

qFW\_D01\_150.2\*\*\*

qFW\_D01\_150.2\*\*\*

qFW\_D01\_150.2\*\*\*

qFW\_D01\_150.2\*\*\*

qFW\_D01\_150.2\*\*\*

qFW\_D01\_150.2\*\*\*

qFW\_D01\_150.2\*\*\*

qFW\_D01\_150.2\*\*\*

qFW\_D01\_150.2\*\*\*

qFW\_D01\_150.2\*\*\*

qRWC\_D02\_150.1

qRWC\_D02\_150.2

qRWC\_D02\_150.2

qRWC\_D02\_150.2

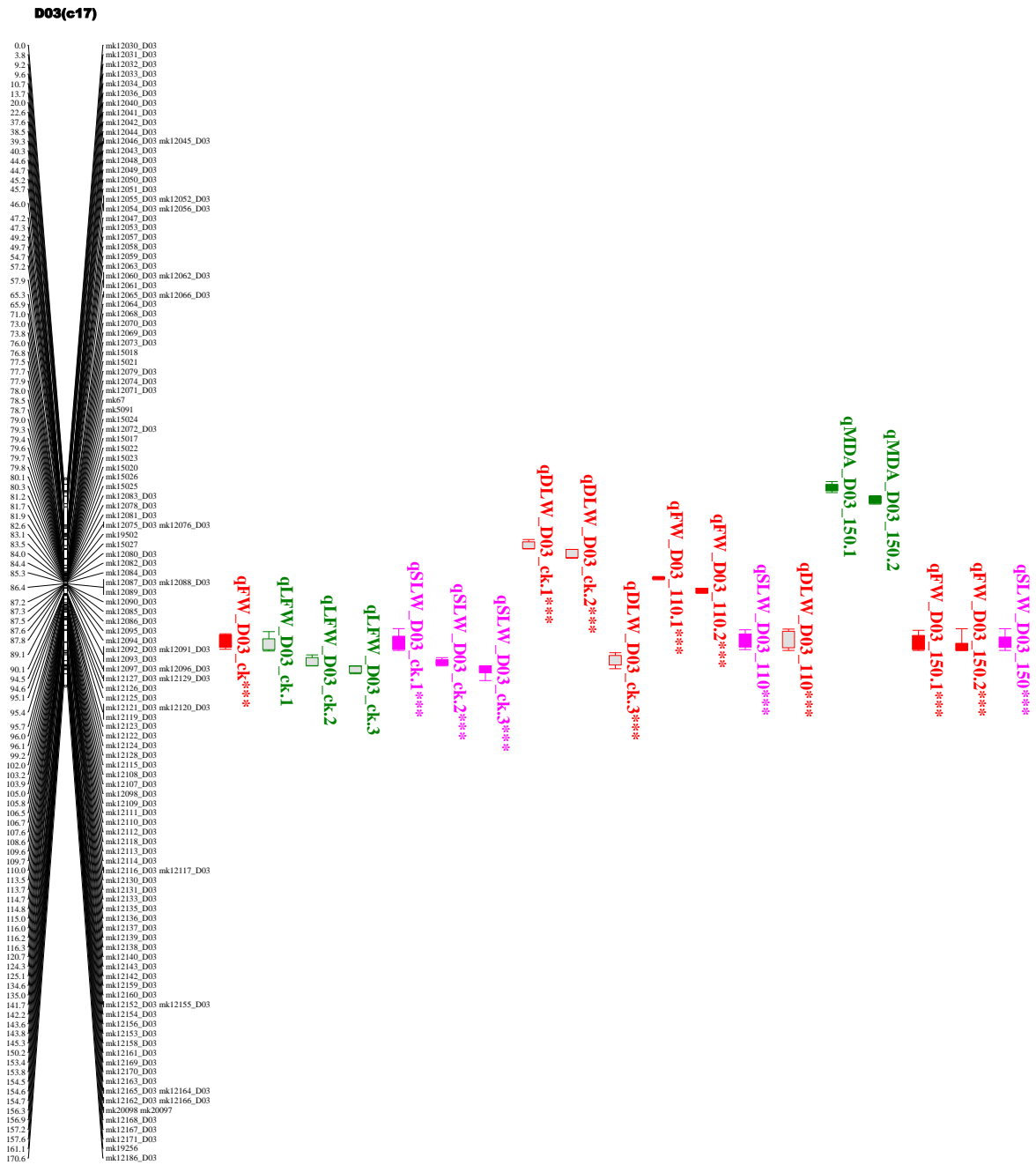
qRWC\_D02\_150.2

qRWC\_D02\_150.2

qRWC\_D02\_150.2

qRWC\_D02\_150.2

qRWC\_D02\_150.2



D02\_2(c14)

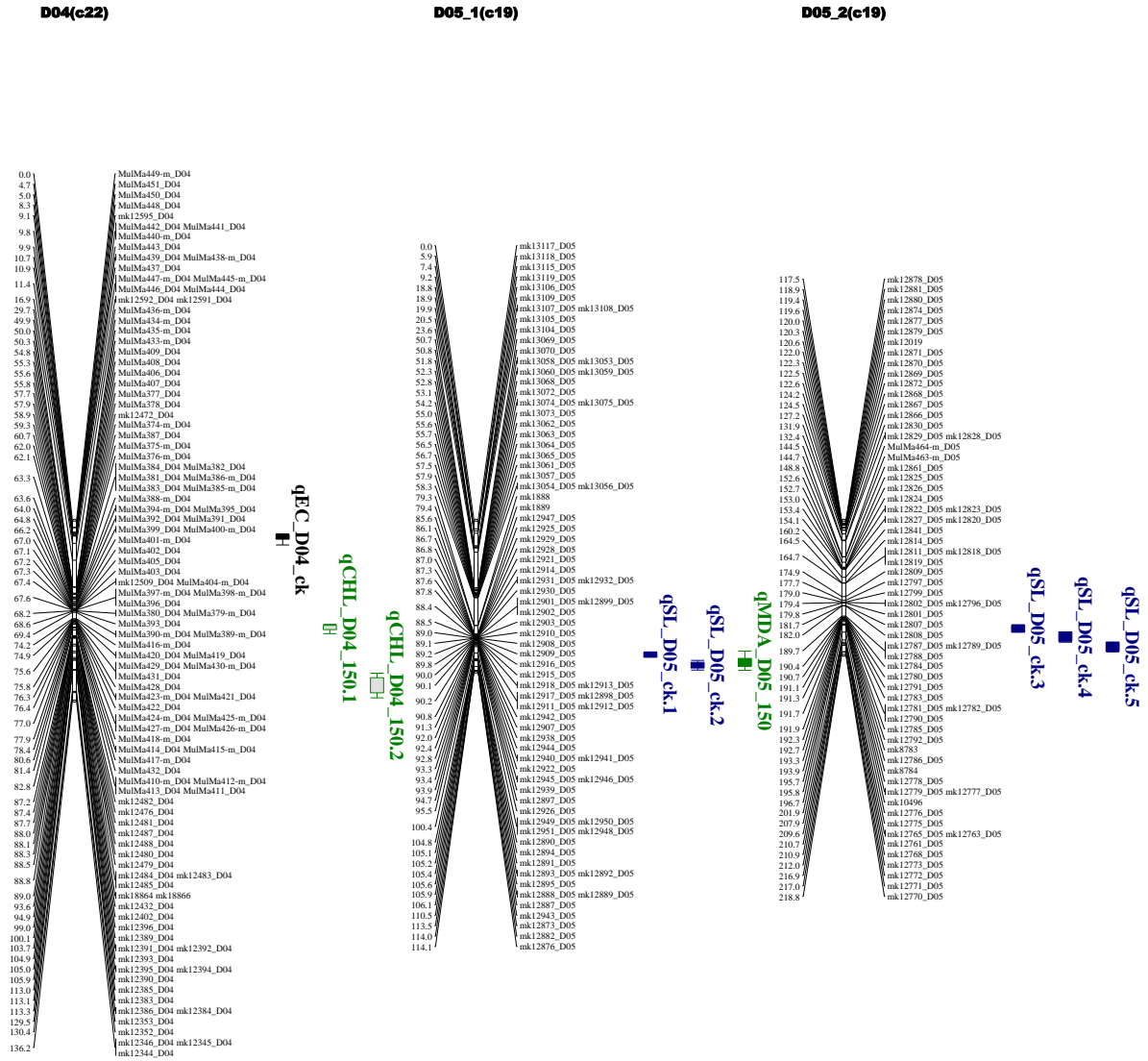
120.7 mki1604\_D02  
121.3 mki1594\_D02  
121.9 mki1608\_D02  
123.5 mki1554\_D02  
124.0 mki1552\_D02 mki1551\_D02  
124.2 mki1553\_D02  
125.5 mki1544\_D02  
mki1573\_D02  
125.9 mki1583\_D02 mki1581\_D02  
mki1578\_D02 mki1584\_D02  
mki1585\_D02 mki1582\_D02  
126.0 mki1577\_D02  
126.1 mki1586\_D02  
126.7 mki1600\_D02 mki1598\_D02  
126.8 mki1599\_D02  
127.7 mki1601\_D02  
mki1597\_D02 mki1596\_D02  
135.2 mki1525\_D02  
136.7 mki1522\_D02  
139.7 mki1527\_D02  
142.9 mki1485\_D02  
146.4 mki1373\_D02  
146.9 mki1375\_D02  
147.2 mki1333\_D02  
147.7 mki1404\_D02  
147.8 mki1399\_D02  
147.9 mki1353\_D02 mki1354\_D02  
148.0 mki1398\_D02  
148.2 mki1351\_D02  
148.3 mki1377\_D02 mki1352\_D02  
148.4 mki1417\_D02  
148.5 mki1349\_D02  
148.7 mki1406\_D02  
148.8 mki1332\_D02  
148.9 mki1407\_D02  
149.0 mki1359\_D02  
149.2 mki1328\_D02  
149.5 mki1410\_D02  
150.0 mki1367\_D02  
150.5 mki1336\_D02  
150.7 mki1436\_D02  
151.1 mki1340\_D02  
151.2 mki1348\_D02  
151.5 mki1437\_D02 mki1380\_D02  
mki1381\_D02  
151.6 mki1346\_D02  
151.8 mki1357\_D02 mki1356\_D02  
152.2 mki1425\_D02  
152.3 mki1341\_D02  
152.6 mki1403\_D02  
153.0 mki1330\_D02  
153.5 mki1412\_D02 mki1411\_D02  
153.7 mki1409\_D02  
mki1394\_D02 mki1392\_D02  
153.9 mki1393\_D02  
154.5 mki1327\_D02  
154.7 mki1326\_D02  
155.2 mki1345\_D02 mki1391\_D02  
155.4 mki1390\_D02  
155.5 mki1435\_D02  
mki1405\_D02  
155.7 mki1369\_D02 mki1370\_D02  
mki1368\_D02  
156.4 mki1430\_D02  
156.9 mki1427\_D02  
157.3 mki1362\_D02  
158.0 mki1420\_D02  
158.1 mki1421\_D02  
159.4 mki1408\_D02  
160.6 mki1396\_D02 mki1395\_D02  
160.8 mki1339\_D02  
161.0 mki1371\_D02 mki1347\_D02  
161.2 mki1434\_D02  
161.5 mki1337\_D02  
162.0 mki1436\_D02  
163.2 mki1451\_D02 mki1450\_D02  
163.9 mki1397\_D02  
164.5 mki1335\_D02 mki1334\_D02  
164.8 mki1429\_D02  
164.9 mki1418\_D02 mki1419\_D02  
165.3 mki1426\_D02  
165.5 mki1383\_D02  
mki1376\_D02  
166.5 mki1453\_D02 mki1454\_D02  
167.4 mki1455\_D02  
167.7 mki1469\_D02 mki1459\_D02  
168.0 mki1512\_D02 mki1511\_D02  
168.3 mki1504\_D02  
169.2 mki1433\_D02 mki1372\_D02  
169.4 mki1379\_D02  
169.6 mki1439\_D02 mki1440\_D02  
169.7 mki1438\_D02 mki1386\_D02  
169.9 mki1355\_D02 mki1366\_D02  
170.0 mki1388\_D02  
mki1387\_D02  
170.1 mki1378\_D02 mki1385\_D02  
mki1384\_D02  
170.2 mki1428\_D02  
170.4 mki1360\_D02 mki1361\_D02  
170.7 mki1360\_D02  
171.1 mki9286  
171.6 mki9287 mki9285  
172.0 mki1342\_D02 mki1365\_D02  
172.2 mki1344\_D02 mki1343\_D02  
172.7 mki1442\_D02 mki1443\_D02  
172.8 mki1441\_D02  
173.4 mki1415\_D02 mki1416\_D02  
mki1413\_D02  
173.5 mki1414\_D02  
173.7 mki1401\_D02 mki1424\_D02  
174.0 mki1389\_D02  
174.2 mki1338\_D02  
174.5 mki1400\_D02

D02\_3(c14)

174.6 mki1402\_D02  
174.7 mki11331\_D02  
174.9 mki1432\_D02 mki11431\_D02  
175.8 mki1482\_D02 mki11483\_D02  
175.9 mki1481\_D02  
176.3 mki1498\_D02  
176.7 mki1493\_D02  
177.3 mki1480\_D02 mki11479\_D02  
mki1461\_D02 mki11465\_D02  
177.6 mki1460\_D02  
178.1 mki1457\_D02  
178.5 mki1497\_D02  
179.0 mki1494\_D02  
179.6 mki1452\_D02  
180.7 mki1487\_D02 mki11495\_D02  
181.6 mki1520\_D02 mki11519\_D02  
181.8 mki1528  
181.9 mki12652  
183.1 mki1501\_D02  
183.4 mki1505\_D02  
183.7 mki1506\_D02  
183.9 mki1496\_D02  
184.7 mki1502\_D02 mki11503\_D02  
185.5 mki1509\_D02 mki11510\_D02  
mki1475\_D02 mki11474\_D02  
186.1 mki1473\_D02 mki11477\_D02  
mki1478\_D02 mki11476\_D02  
186.9 mki1514\_D02  
187.2 mki1516\_D02  
188.0 mki1513\_D02  
188.7 mki1521\_D02  
189.1 mki1517\_D02 mki11515\_D02  
mki18780  
189.2 mki3464  
190.1 mki1447\_D02 mki11448\_D02  
mki1445\_D02 mki11449\_D02  
190.3 mki1446\_D02 mki11444\_D02  
190.4 mki1458\_D02  
mki1472\_D02 mki11471\_D02  
190.9 mki1470\_D02  
191.3 mki1466\_D02  
191.5 mki1463\_D02  
191.9 mki1467\_D02  
192.0 mki1468\_D02  
193.0 mki1374\_D02  
193.2 mki1423\_D02  
193.7 mki1422\_D02  
194.1 mki1358\_D02  
mki1329\_D02  
194.4 mki1364\_D02 mki11363\_D02  
194.9 mki1400\_D02  
196.5 mki1489\_D02  
196.6 mki1491\_D02  
197.1 mki1402\_D02  
197.3 mki1499\_D02  
mki1508\_D02 mki11507\_D02  
197.6 mki1500\_D02  
197.7 mki1486\_D02  
198.2 mki1484\_D02  
198.6 mki1462\_D02  
199.1 mki1464\_D02  
199.3 mki18870 mki18871  
199.7 mki1488\_D02  
202.4 mki1325\_D02  
204.1 MulMa315-m\_D02  
208.7 MulMa312-m\_D02 MulMa313\_D02  
209.1 MulMa314-m\_D02  
209.5 MulMa303-m\_D02  
218.7 MulMa304\_D02  
218.8 MulMa311\_D02  
219.0 MulMa305\_D02 MulMa310\_D02  
219.3 MulMa307-m\_D02 MulMa309-m\_D02  
219.4 MulMa308\_D02 MulMa306-m\_D02  
220.6 MulMa301\_D02 MulMa302\_D02  
221.1 MulMa297-m\_D02  
221.4 MulMa298-m\_D02 MulMa300\_D02  
221.5 MulMa299\_D02  
225.0 mki19501 mki19500  
225.4 mki19499  
233.1 mki1269\_D02 mki11270\_D02  
234.5 mki1280\_D02  
234.7 mki1277\_D02  
234.8 mki1279\_D02  
234.9 mki1278\_D02  
235.5 mki1275\_D02 mki11274\_D02  
236.0 mki1276\_D02 mki11273\_D02  
236.1 mki1271\_D02  
236.1 mki1272\_D02  
236.4 mki1281\_D02  
238.4 mki1283\_D02 mki11282\_D02  
239.1 mki1284\_D02  
240.2 mki1286\_D02  
244.1 mki1285\_D02  
248.5 MulMa295\_D02  
250.7 mki1287\_D02  
265.2 mki1261\_D02 mki11262\_D02  
266.7 MulMa294\_D02 MulMa293\_D02  
267.7 mki1260\_D02  
271.7 mki11257\_D02  
273.4 mki1252\_D02  
274.9 mki1250\_D02 mki11251\_D02  
285.7 mki1212\_D02  
294.7 MulMa289\_D02 MulMa288\_D02  
295.2 MulMa290\_D02 MulMa291-m\_D02  
296.0 MulMa292-m\_D02  
305.8 MulMa286\_D02 MulMa287-m\_D02  
mki1164\_D02 mki11165\_D02  
306.5 MulMa285\_D02  
312.0 MulMa280\_D02  
312.6 MulMa281\_D02  
313.3 MulMa283\_D02 MulMa284\_D02  
MulMa282-m\_D02

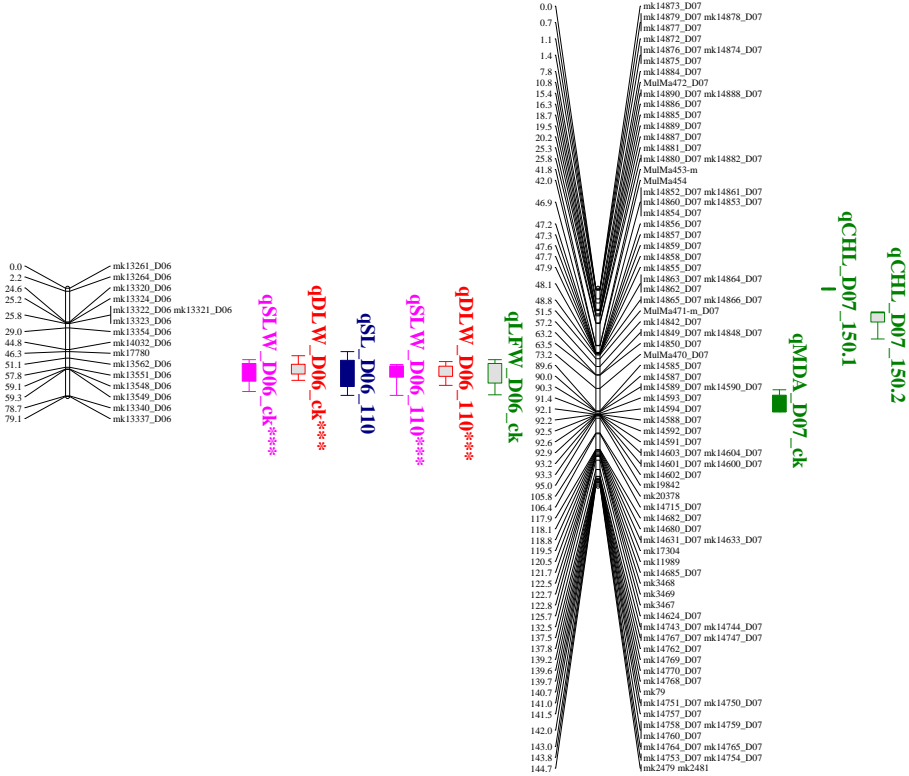
qSL\_D02\_110

qEC\_D02\_150



D06(c25)

D07\_1(c16)

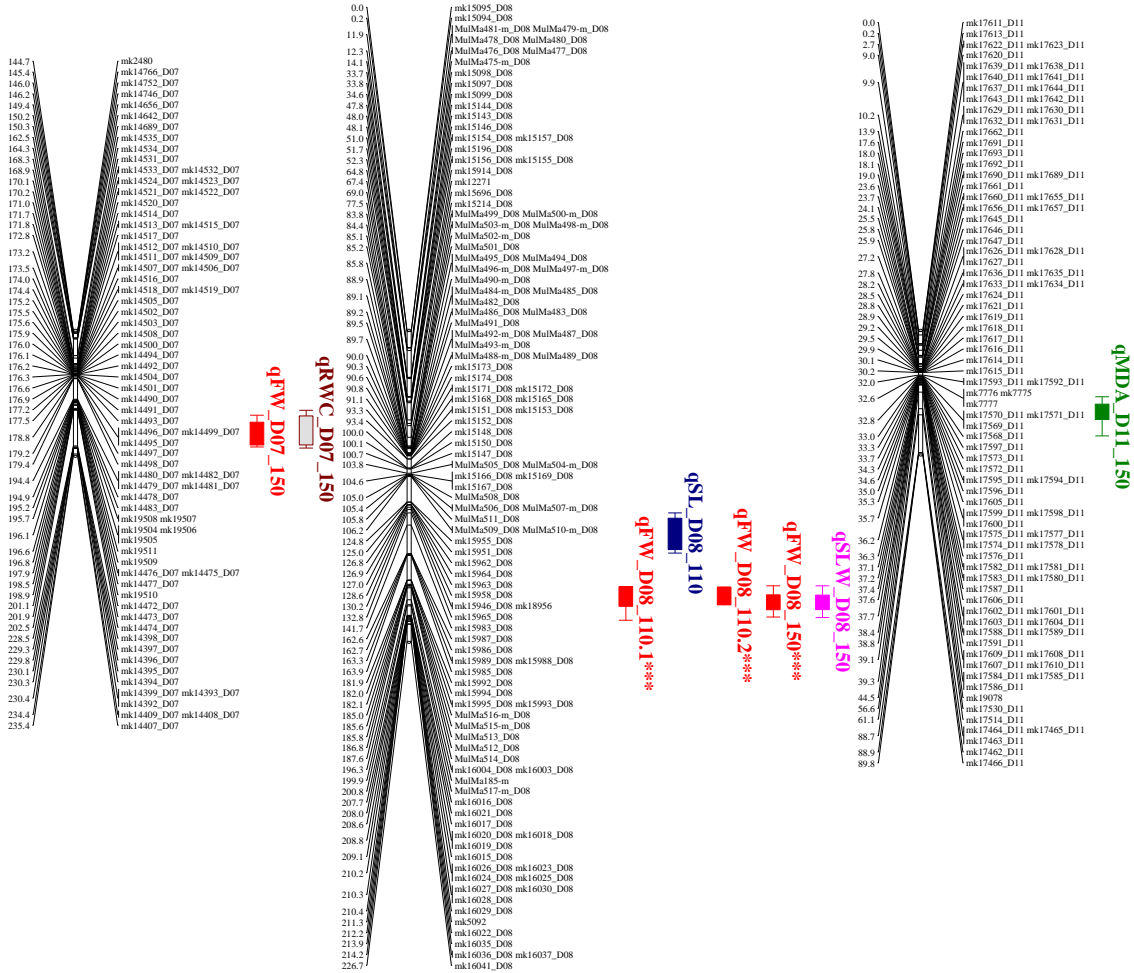




D07\_2(c16)

D08(c24)

D11(c21)



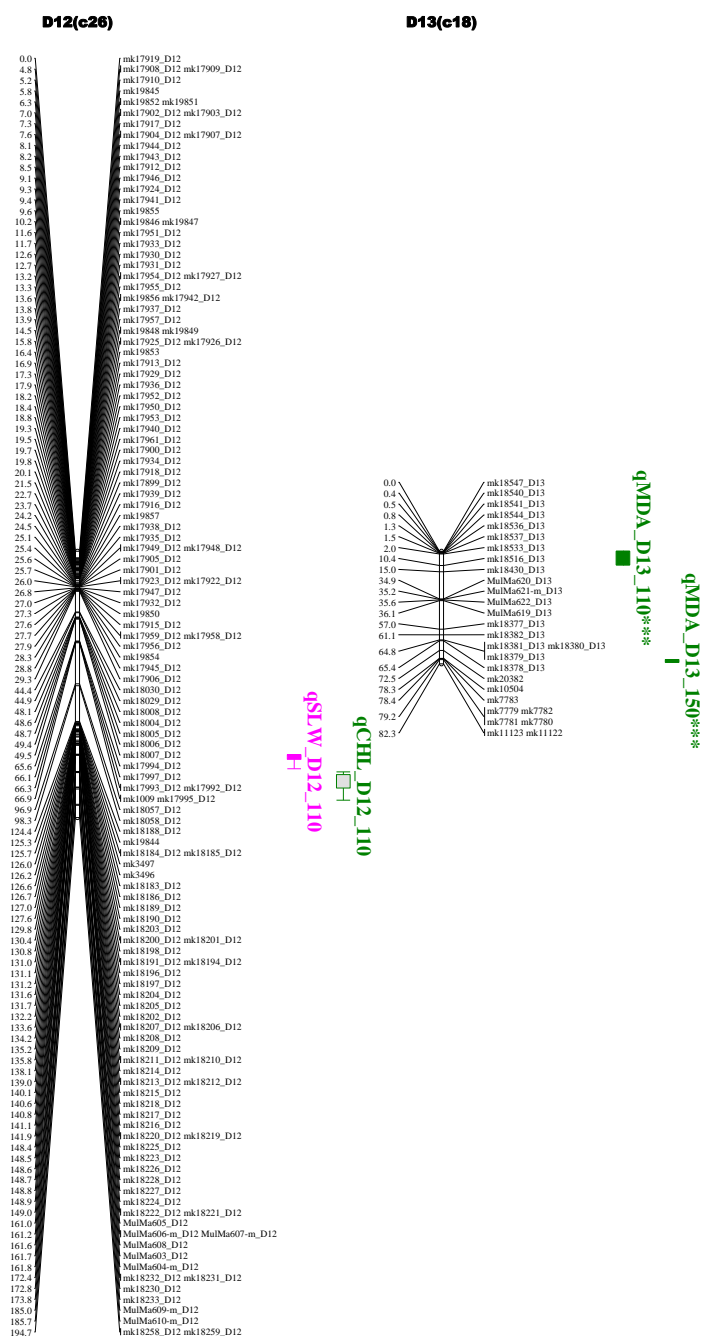


Figure S2: Total QTLs (66) found in this study, asterisk means consistent QTLs