

Supplementary Materials: The Autophagic Process Occurs in Human Bone Metastasis and Implicates Molecular Mechanisms Differently Affected by Rab5a in the Early and Late Stages

Paola Maroni, Paola Bendinelli, Massimo Resnati, Emanuela Matteucci, Enrico Milan and Maria Alfonsina Desiderio

1833

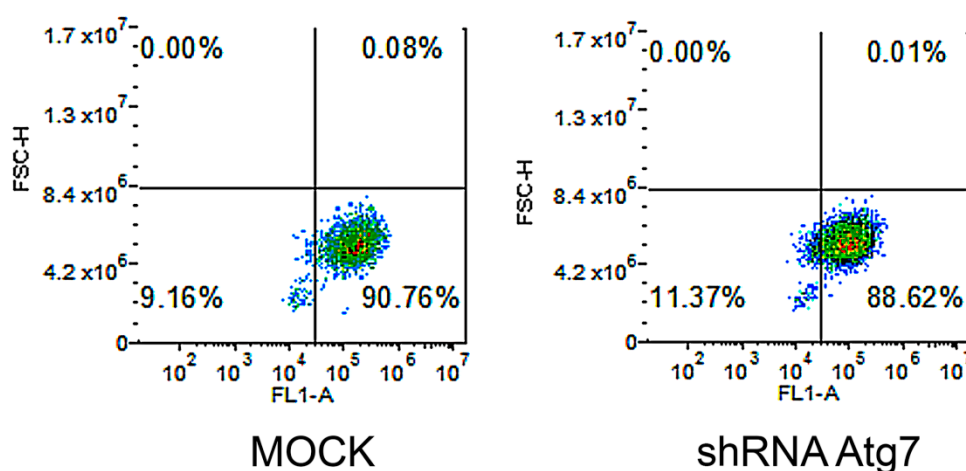


Figure S1. Cytofluorimetric analysis. To assess shRNA toxicity and transduction efficiency, puromycin resistance in Mission shRNAs was replaced with GFP, and the proportion of live 1833-GFP+ cells (successfully infected = percentage of efficiency) was determined by flow cytometry 3 days after lentiviral infection for specific and MOCK shRNA. The GFP+ proportion was monitored with Accuri C6 Flow Cytometer (BD Biosciences, San Jose, CA, USA) after staining with APC-conjugated AnnexinV (BD PharmMingen, San Diego, CA, USA) and propidium iodide. The transduction efficiency was about 90% for the two shRNA.