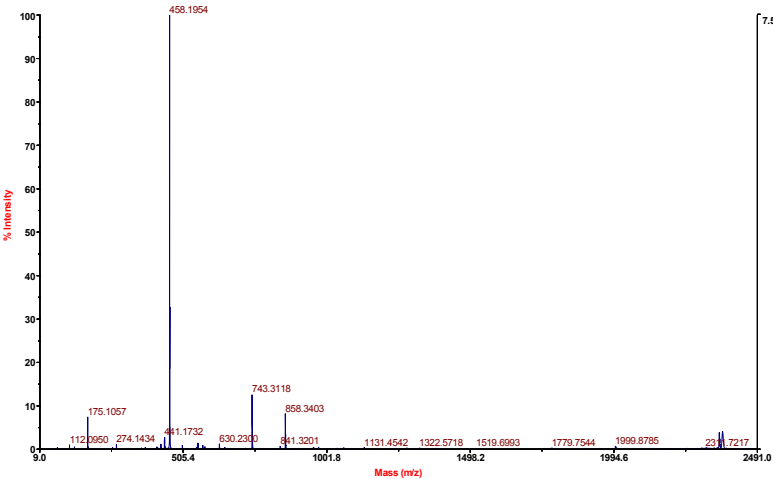
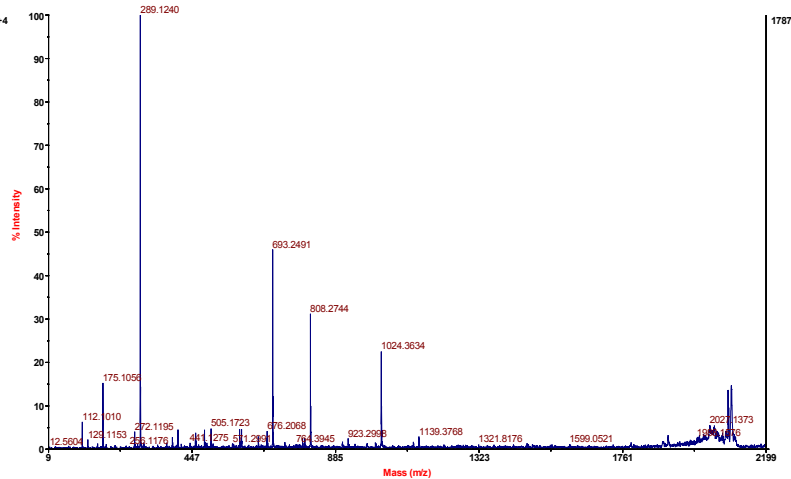


4700 MS/MS Precursor 2359.01 Spec #1 MC[BP = 458.2, 74868]



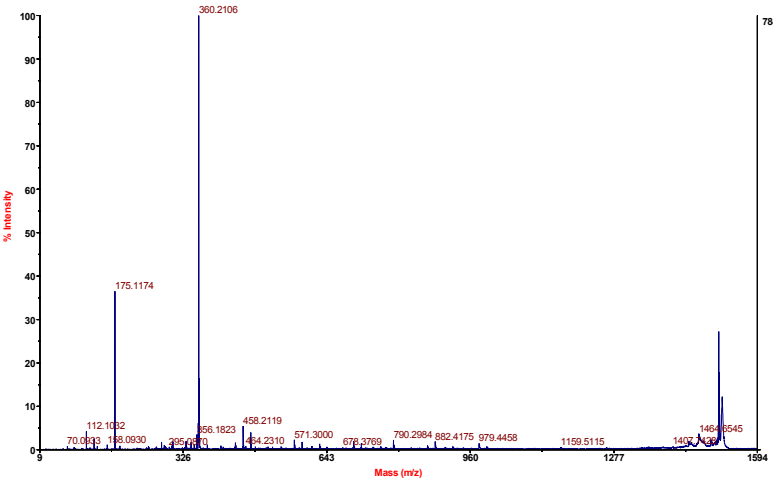
E:\...\C7_MSMS_2359.0127_2.t2d
Acquired:

4700 MS/MS Precursor 2082.74 Spec #1 MC[BP = 289.1, 1788]



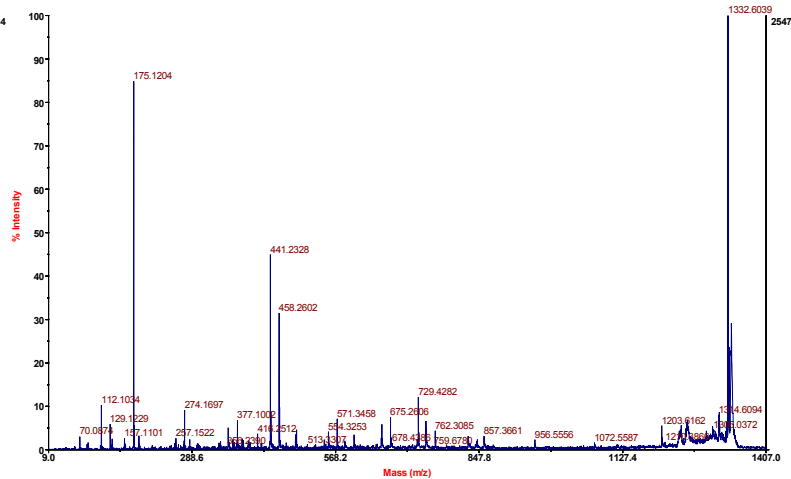
E:\...\C7_MSMS_2082.7446_11.t2d
Acquired:

4700 MS/MS Precursor 1508.64 Spec #1 MC[BP = 360.2, 7846]



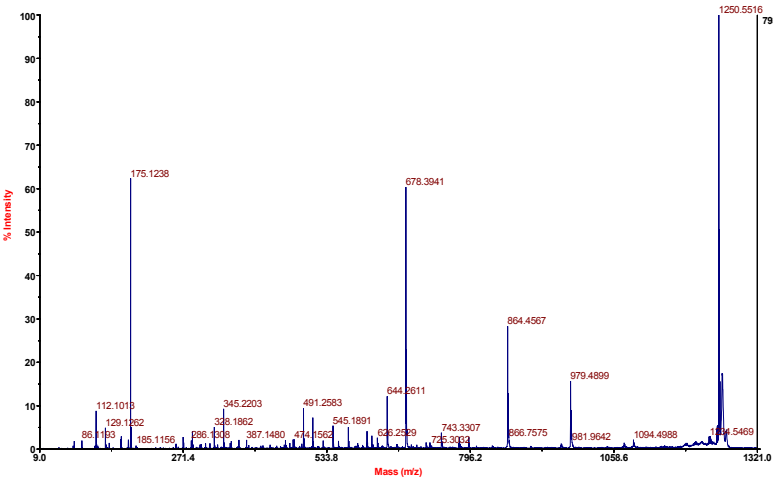
E:\...\C7_MSMS_1508.6381_5.t2d
Acquired:

4700 MS/MS Precursor 1332.58 Spec #1 MC[BP = 1332.6, 2547]



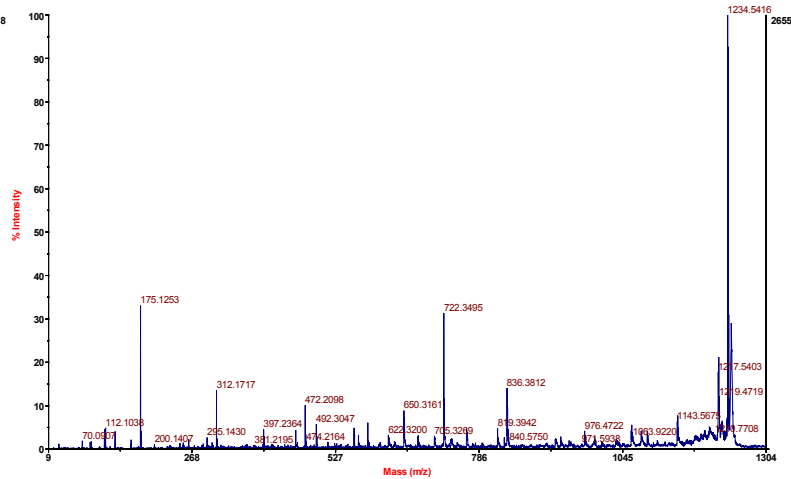
E:\...\C7_MSMS_1332.5847_6.t2d
Acquired:

4700 MS/MS Precursor 1250.53 Spec #1 MC[BP = 1250.5, 7932]



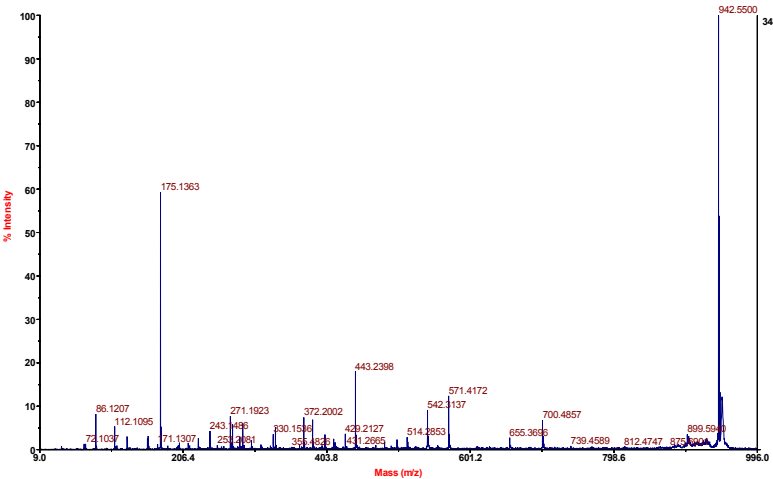
E:\...\C7_MSMS_1250.5287_3.t2d
Acquired:

4700 MS/MS Precursor 1234.52 Spec #1 MC[BP = 1234.5, 2655]



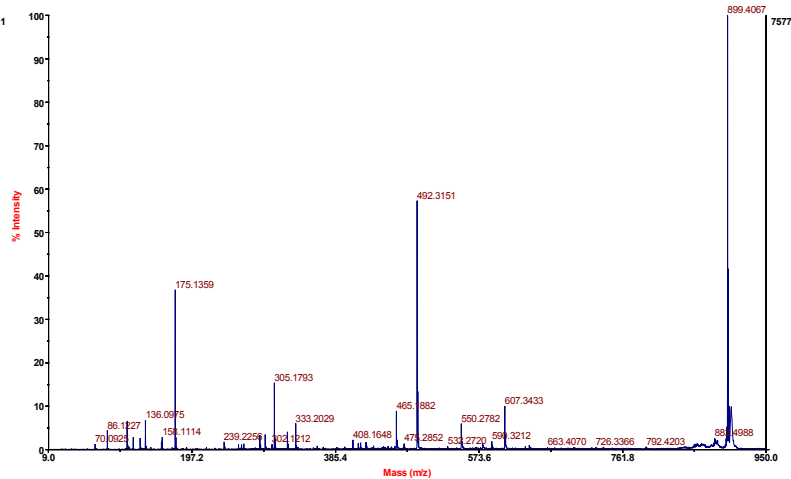
E:\...\C7_MSMS_1234.5220_7.t2d
Acquired:

4700 MS/MS Precursor 942.506 Spec #1 MC[BP = 942.6, 3487]



E:\...\C7_MSMS_942.5059_10.t2d
Acquired:

4700 MS/MS Precursor 899.431 Spec #1 MC[BP = 899.4, 7578]



E:\...\C7_MSMS_899.4311_4.t2d
Acquired: