

Supplementary Information

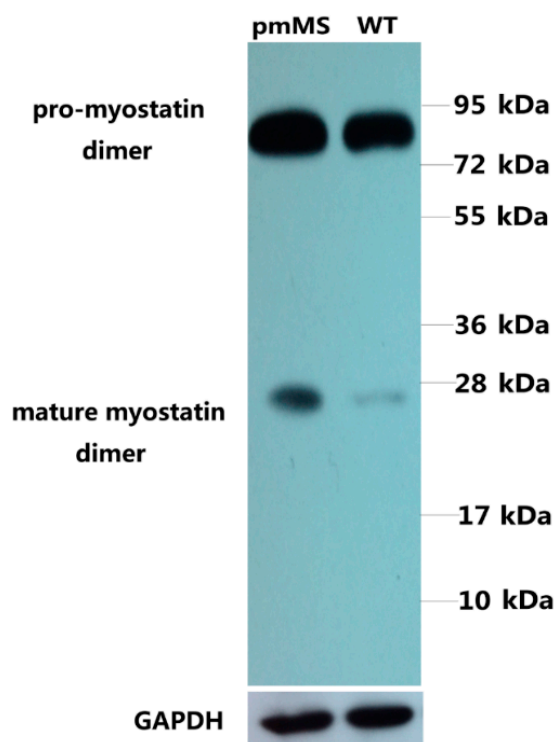


Figure S1. Western blot of extracts isolated from gastrocnemius of a representative pmMS (transgenic mice expressing porcine missense mutation myostatin) male mouse and a WT (wild type) male mouse. SDS-PAGE was performed under non-reduced condition as described in Experimental Section. *Pro-myostatin* refers to full-length myostatin containing signal peptide, propeptide and mature myostatin. WT, wild type.