

Supplementary Information

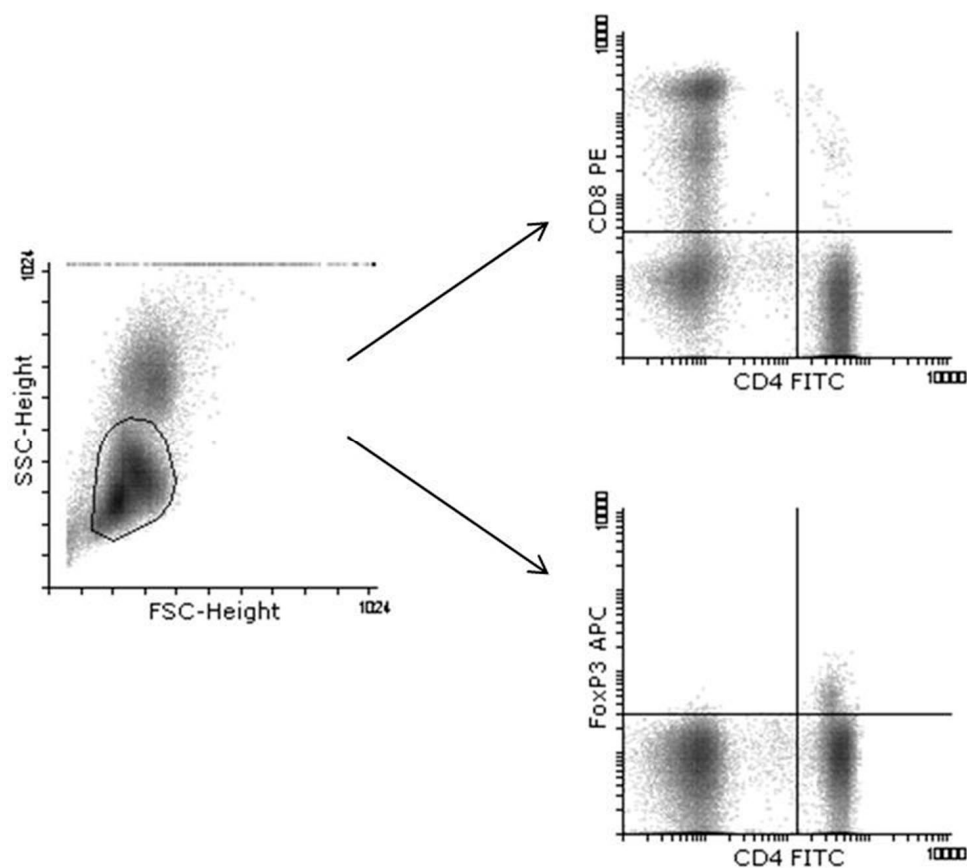


Figure S1. Gating strategy for flow cytometric analysis of the fractions of CD4⁺CD8⁻, CD8⁺CD4⁻ and CD4⁺FoxP3⁺ cells. The surrounded cell population (left graph) indicates the viable lymphocytes. APC, allophycocyanin; PE, phycoerythrin; FITC, fluorescein isothiocyanate; FSC, forward scatter; SSC side scatter.