

Supplementary Information

Figure S1. Amplification curves of two samples with similar C_t values of the primary 5'-GT73 Scorpion PCR screening. Genomic samples 14 (blue), 18 (red), and the no template control (ntc) (grey) are shown. The C_t values can be found in Table 1 and Table S1.

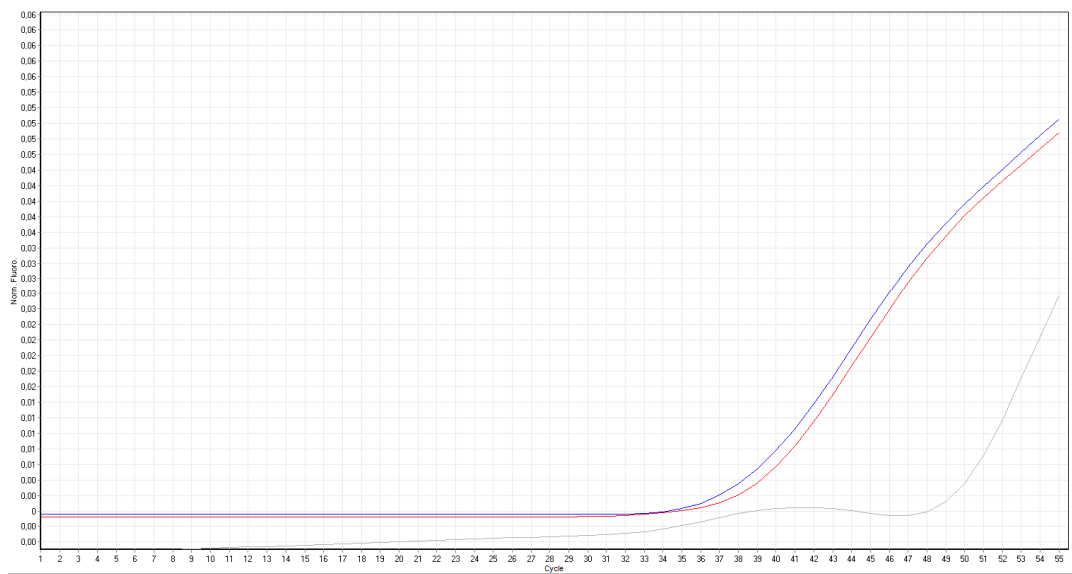


Figure S2. Amplification curves of the primary 3'-MON810 real-time PCR screening with subsequent HRM analysis. Genomic samples 264 (green), 323 (blue), the reference = VT3 pool (red), and the ntc (grey) are shown. The C_t values are 29.26 (sample 264), 30.90 (sample 323), and 30.81 (VT3 pool).

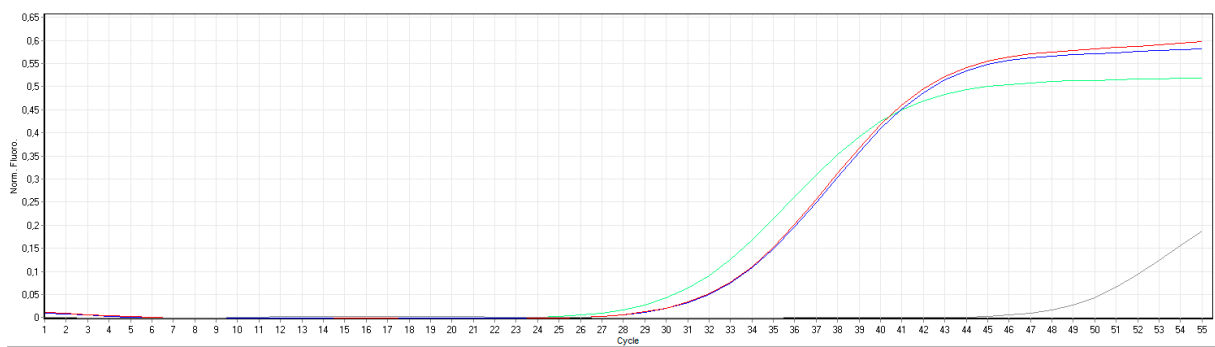


Figure S3. Normalized HRM graph of the 3'-MON810 HRM analysis. Genomic samples 264 (green), 323 (blue), and the reference = VT3 pool (red) are shown. The confidence values (%) are 1.23 (sample 264), 97.03 (sample 323), and 100.00 (reference).

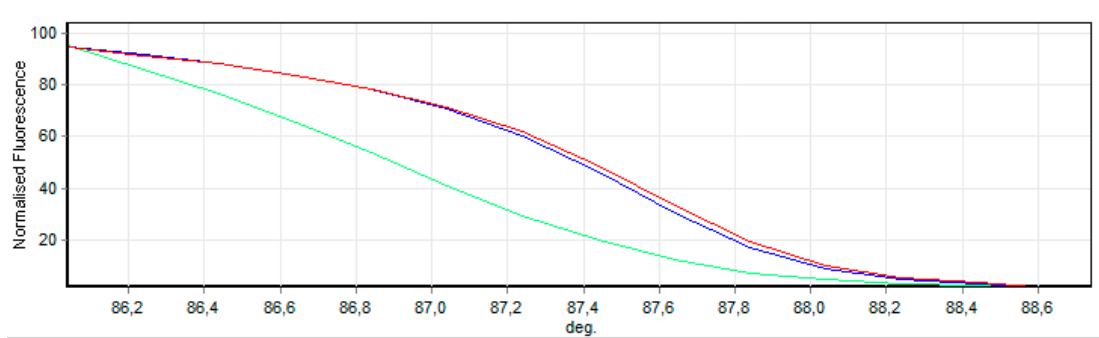


Figure S4. Difference HRM graph of the 3'-MON810 HRM analysis. Genomic samples 264 (green), 323 (blue), and the reference = VT3 pool (red) are shown. The confidence values (%) are 1.23 (sample 264), 97.03 (sample 323), and 100.00 (reference).

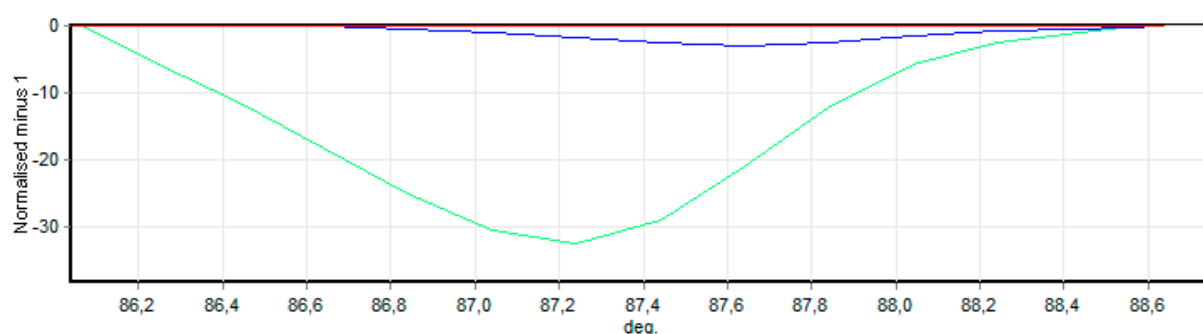


Table S1. All C_t and confidence values of selected samples of the primary screening of the 5'-GT73 region in oilseed rape samples by real-time PCR employing Scorpion primers and by HRM analysis. This table contains supplementary information of Table 1.

Sample	C_t Value	Confidence Value
13	51.84	79.97
14	47.64	65.92
18	48.30	30.23
20	45.77	47.56
30	45.93	73.56
40	46.67	24.87
118	40.54	35.13
137	43.81	11.80
152	46.57	2.86
153	37.69	9.17
156	39.48	9.11
157	41.92	17.55
170	45.11	39.61
175	41.40	37.49
333	42.67	10.15