

Identification of Late Embryogenesis Abundant (LEA) Protein Putative Interactors Using Phage Display

Supplemental Information

Figure S.1. The percentage (%) of randomly chosen plaque that contained insert greater than 300 bp from seed library 1 (SL1) for SMP1- (**a** and **d**), *GmPM28*- (**b** and **e**), and BSA-biopans (**c** and **f**) for each round of biopanning at either 25 or 41 °C.

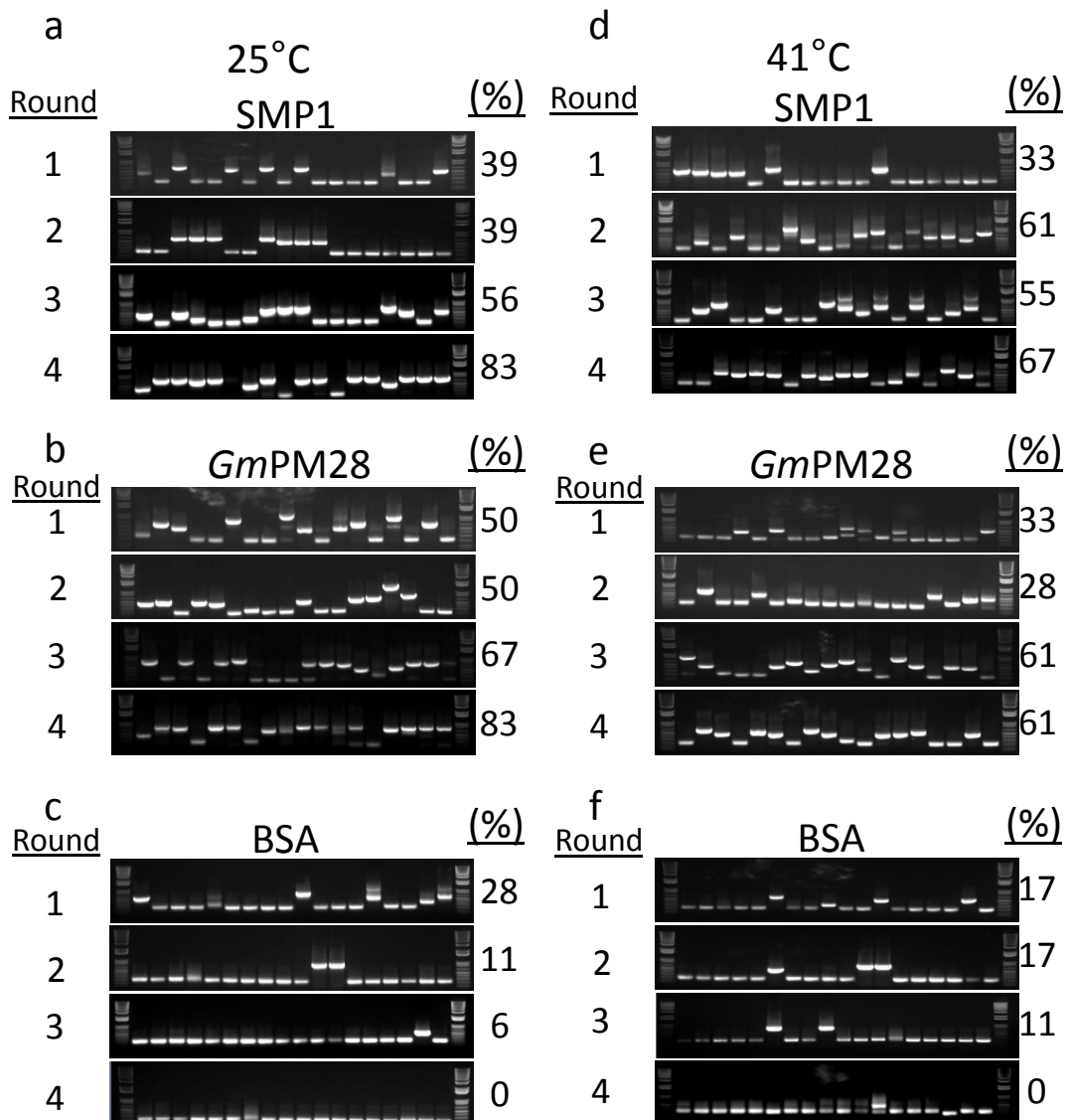


Figure S.2. The percentage (%) of randomly chosen plaque that contained insert greater than 300 bp from seed library 2 (SL2) for SMP1- (a and d), *GmPM28*- (b and e), and BSA-biopans (c and f) for each round of biopanning at either 25 or 41 °C.

