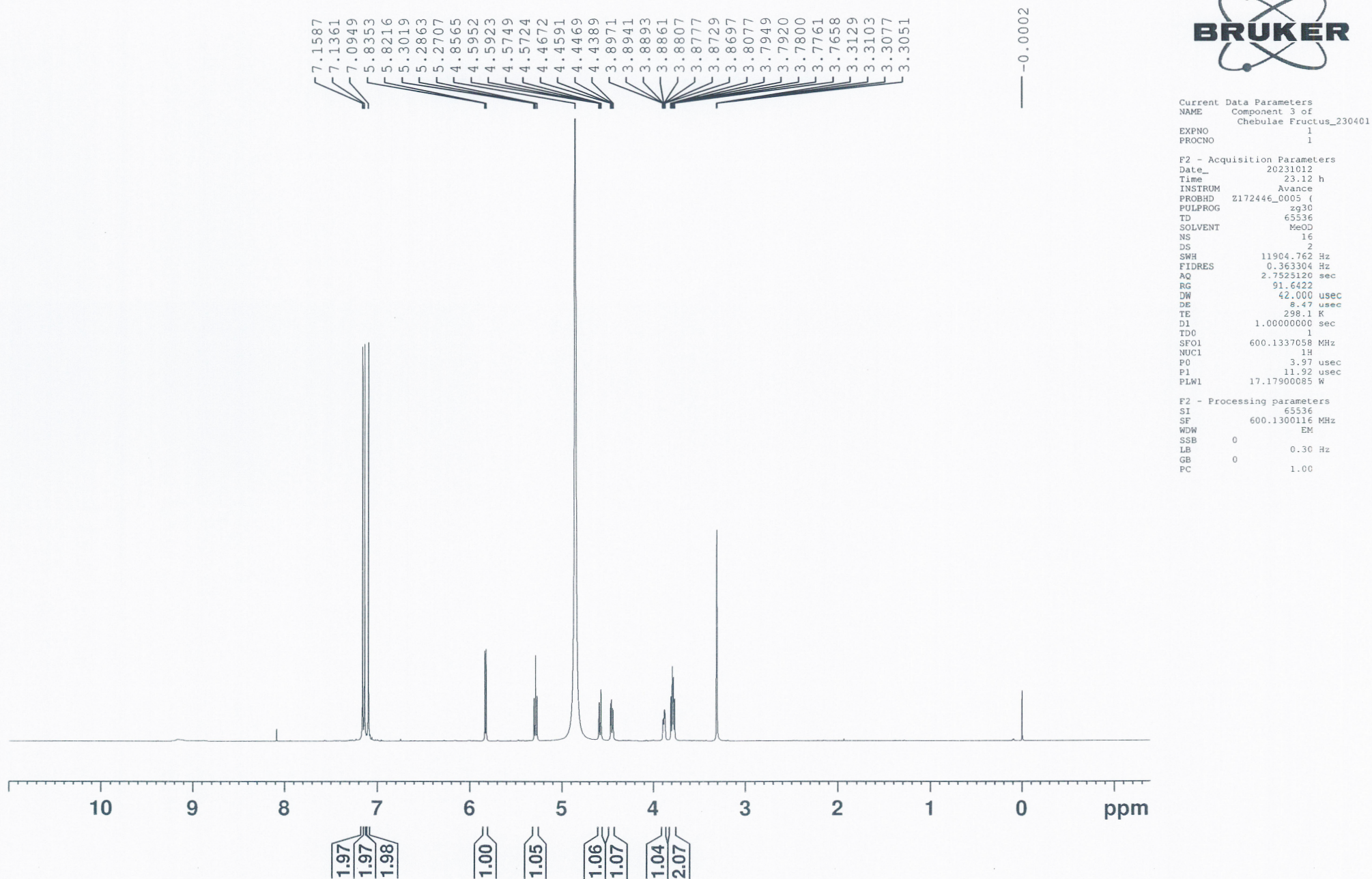


Figure S1: the information of compound 3 by NMR analysis

HP001



HP001

7.1587
7.1361
7.0949

5.8353
5.8216

5.3019
5.2863
5.2707



Current Data Parameters
NAME Component 3 of
Chebulae Fructus_230401

EXPNO 1
PROCNO 1

F2 - Acquisition Parameters
Date_ 2012112
Time_ 2112

INSTRUM Avance
PROBHD 2172446_0005 (

PULPROG zg30
TD 65536

SOLVENT MeOD
NS 16

DS 11904.762 Hz
SWH 10353.064 Hz

FIDRES 2.7525120 sec
RG 91.6422

DE 42.000 usec
TE 298.1 K

D1 1.00000000 sec
D10

SFO1 600.1337058 MHz
SF 600.1337058 MHz

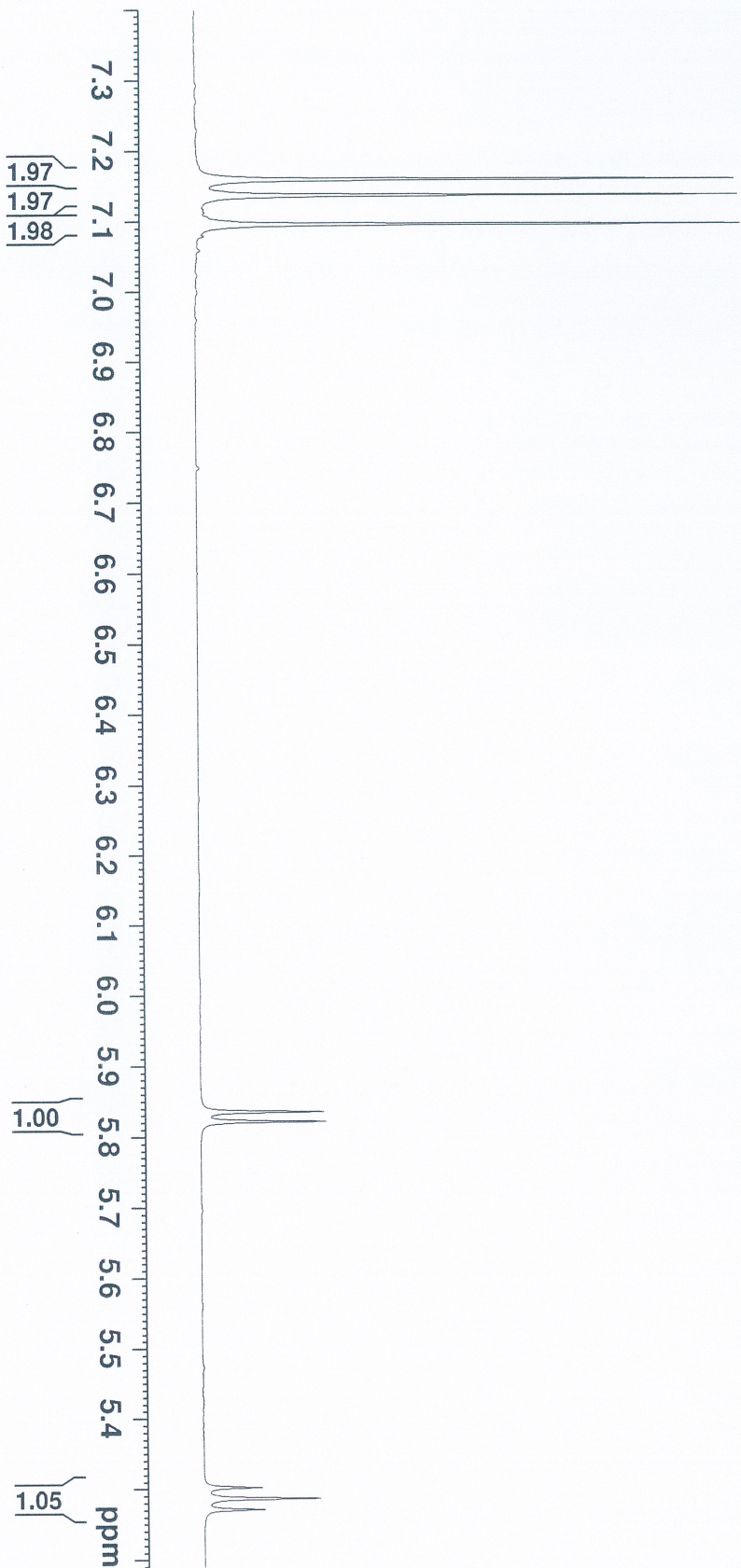
PC 3.97 usec
PL 11.92 usec

PLW1 17.17900085 W

F2 - Processing Parameters
SI 65536
SF 600.1300116 MHz

WDW EM
SSB 0

GB 0.30 Hz
PC 1.00



HP001

4.5952
4.5923
4.5749
4.5724

4.4672
4.4591
4.4469
4.4389

3.8971
3.8941
3.8893
3.8861
3.8807
3.8777
3.8729
3.8697
3.8077
3.7949
3.7920
3.7800
3.7761
3.7658

4.6
1.06

4.5
1.07

3.9
1.04

3.8
2.07
ppm



Current Data Parameters
NAME Composite_Fucius_230401
EXPNO 1
PROCNO 1

F2 - Acquisition Parameters
Date_ 20231012
Time 23.12 h
INSTRUM spect
PROBHD Z172446_00330
PULPROG zgpg30
TD 65536
SOLVENT MeOD
NS 16
DS 2
SWH 11904.762 Hz
FIDRES 0.363304 Hz
AQ 2.7523120 sec
RG 91.6402
DM 42.000 usec
DE 6.447 usec
TE 298.1 K
D1 1.00000000 sec
TD0 1
SFO1 600.1337058 MHz
NUC1 1H
P0 3.97 usec
P1 1.92 usec
PL1 17.17900085 W
F2 - Processing parameters
SI 65536
SF 600.1300116 MHz
WDW EM
SSB 0
LB 0.30 Hz
GB 0
PC 1.00

HP001



168.27
168.17
166.88

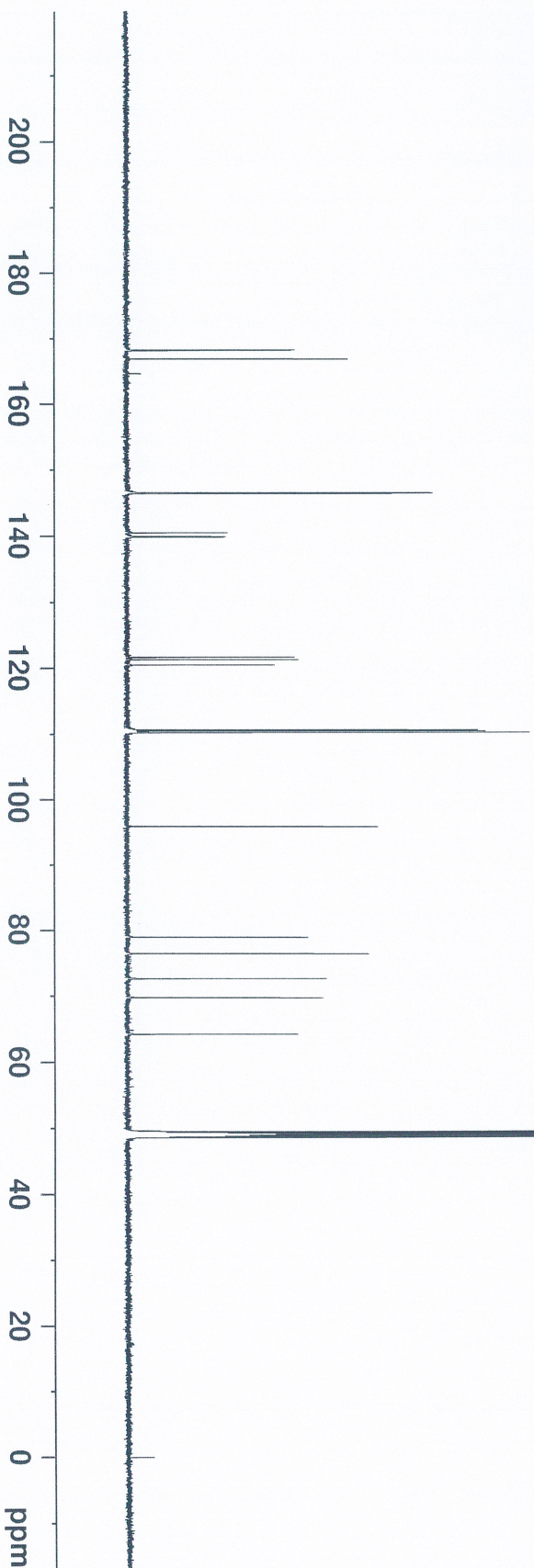
146.56
146.52
146.46
140.51
139.94
139.83

121.66
121.31
120.53
110.65
110.45
110.25

95.92

78.97
76.45
72.67
69.75
64.27
49.49
49.34
49.20
49.06
48.92
48.77
48.63

-0.00

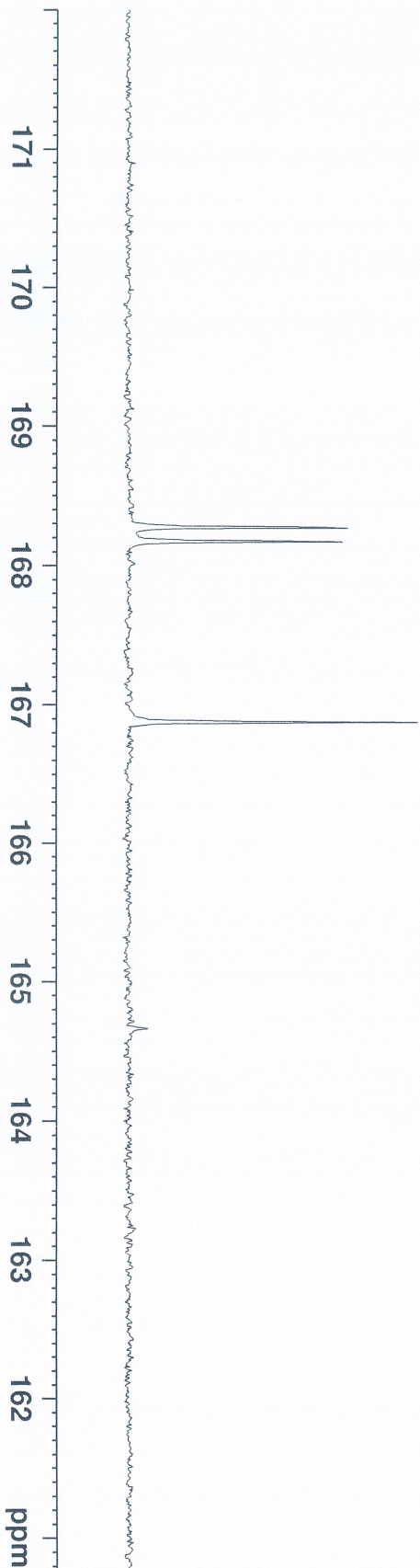


Current Data Parameters
NAME Component 3 of 3
Chebulae Fructus_230401
EXPNO 1
PROCNO 2
F2 - Acquisition Parameters
Date_ 20231013
Time 5.53 h
INSTRUM Avance
PROBHD 217246.3005 (1
PULPROG zgpg30
TD 65536
FIDRES 0.2505999 W
SOLVENT MeOD
NS 8000
DS 4
SWH 35714.283 Hz
FIDRES 0.10694144 Hz
AQ 0.9175040 sec
RG 101
DW 14.000 usec
DE 9.50 usec
TE 300.2 K
D1 2.0000000 sec
D11 0.03000000 sec
TD0 1
SF01 150.9178988 MHz
NUC1 13C
P1 3.50 usec
PI 11.80 usec
PLM1 86.66300201 W
SF02 600.1324005 MHz
NUC2 1H
PCPD 70.00 usec
PLM2 17.17900085 W
PLM12 0.49814001 W
PLM13 0.2505999 W
F2 - Processing Parameters
SI 32768
SF 150.9025931 MHz
WDW EM
SSB 0
LB 1.00 Hz
GB 0
PC 1.40

HP001



168.27
168.17
166.88



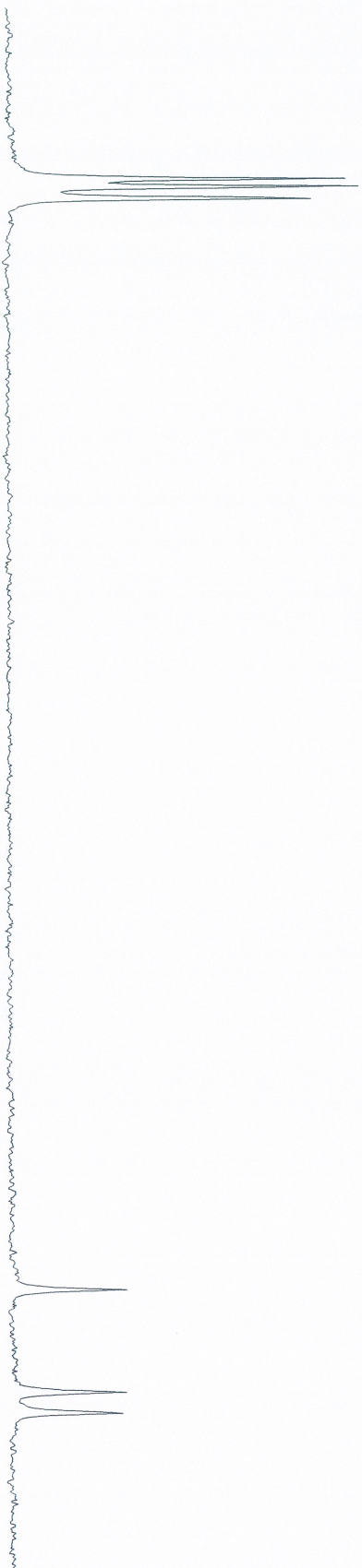
Current Data Parameters
NAME CHEBULOS Fructus_230401
EXPNO 2
PROCNO 1
F2 - Acquisition Parameters
Date_ 20231013
Time 5.53 h
INSTRUM Avance
PROBHD 217246.005 (1
PULPROG zgpg30
TD 65536
SOLVENT MeOD
NS 8000
DS 4
SWH 35714.285 Hz
FIDRES 1.000000 Hz
AQ 0.9179240 sec
RG 101
DW 14.000 usec
DE 6.50 usec
TE 300.2 K
D11 2.000000 sec
D11 0.0300000 sec
T00 1
SFO1 150.917898 MHz
NUC1 13C
P1 3.00 usec
PL1 0.00 dB
SFO2 86.65300201 W
PLW1 0.00 dB
SFO2 600.1324005 MHz
NUC2 1H
CDEPRG12 waltz16
PL12 17.1700085 W
PLW12 0.49814001 W
PLW13 0.25055999 W
F2 - Processing parameters
SI 32768
SF 150.9025931 MHz
WDW EM
SSB 0
LB 1.00 Hz
GB 0
PC 1.40

HP001

146.56
146.52
146.46

140.51
139.94
139.83

147
146
145
144
143
142
141
140
ppm

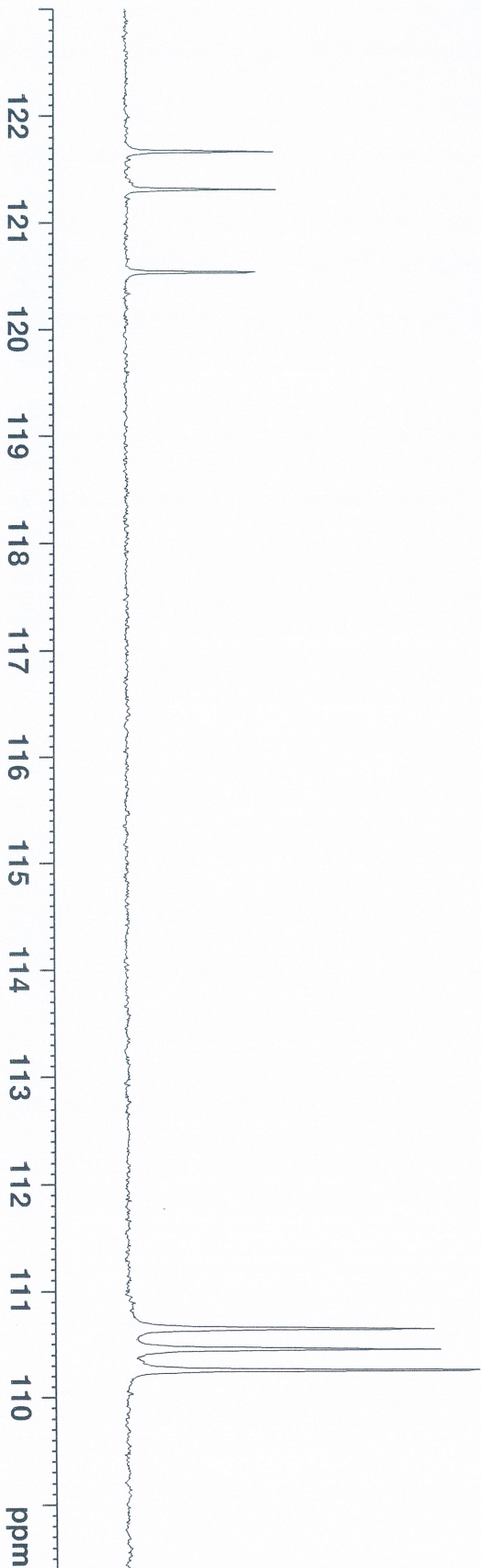


Current Data Parameters
NAME Component 3 of 3
Chebulae Fructus_230401
EXPNO 2
PROCNO 1
F2 - Acquisition Parameters
Date_ 20231013
Time 5.53 h
INSTRUM Avance
PROBHD Z17246_20030
PULPROG zgpg30
TD 65536
FIDRES 0.9175040 sec
AQ 0.9175040 sec
RG 101
DE 14.000 usec
TE 298.15 K
D1 2.0000000 sec
D11 0.0300000 sec
TDO 1
STO1 150.917698 MHz
NUC1 13C
P1 3.93 usec
SFO2 600.1324005 MHz
PLM1 86.66300201 W
NO2 200304012
PCPD2 70.00 usec
PLM2 17.17900085 W
PLM12 0.49814001 W
PLM13 0.25055999 W
F2 - Processing parameters
SI 32768
SF 150.9025931 MHz
WDW EM
SSB 0
GB 0
PC 1.40

HP001

121.66
121.31
120.53

110.65
110.45
110.25

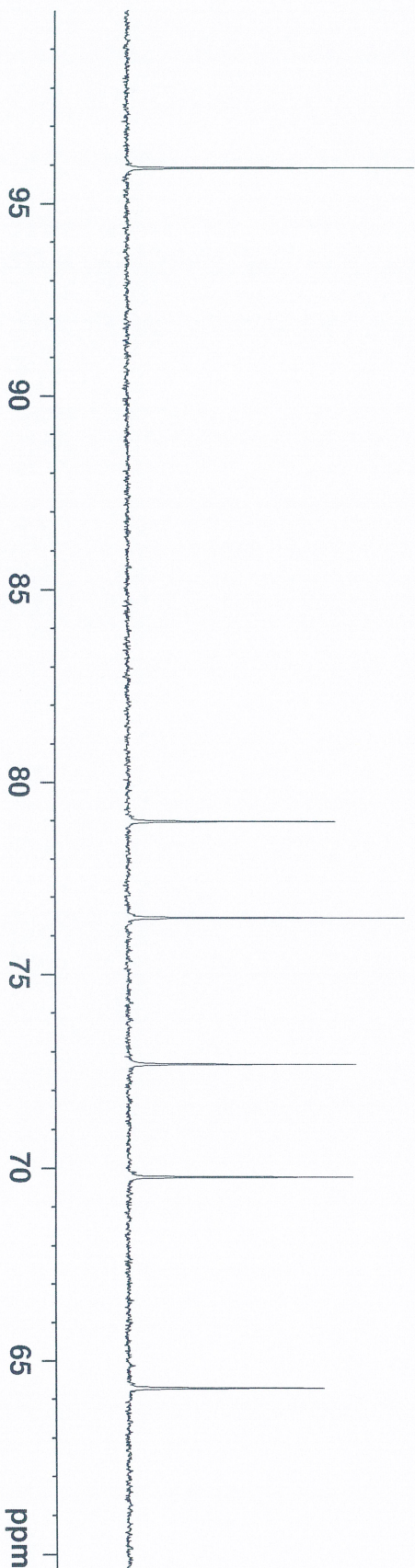


Current Data Parameters
NAME Chebulae Fructus_230401
EXNO 2
PROCNO 1
F2 - Acquisition Parameters
Date_ 20231013
Time 5.53 h
INSTRUM Avance
PROBHD 2172445_0005 (1H/13C) QNP
PULPROG zgpg30
SOLVENT MeOD
NS 8000
DS 4
SWH 35714.285 Hz
FIDRES 110.000 Hz
AQ 0.9175040 sec
RG 101
DE 14.000 usec
TE 300.2 K
D11 2.0000000 sec
TD0 0.0300000 sec
SFO1 150.9178988 MHz
NUC1 13C
P1 3.00 usec
PL1 11.80 usec
SFO2 600.1324005 MHz
NUC2 1H
CDEPRG12 waltz16
PL12 17.17900085 W
PLW2 0.49814001 W
PLW3 0.25055999 W
F2 - Processing Parameters
SI 32768
SF 150.9025931 MHz
WDW EM
SSB 0
LB 1.00 Hz
GB 0
PC 1.40

HP001



95.92
78.97
76.45
72.67
69.75
64.27



Current Data Parameters
NAME Component 3 of
Cinepluaa Fructus_230401
EXPNO 2
PROCNO 1
F2 - Acquisition Parameters
Date_ 20231013
Time 5.53 h
INSTRUM Avance
PROBHD 21/246.005 (1
PULPROG zgpg30
TD 65536
FIDRES 0.000180
SOLVENT MeOD
NS 8000
DS 4
SWH 35714.283 Hz
FIDRES 0.000180 Hz
AQ 0.9175040 sec
RG 101
DE 14.000 usec
TE 300.2 K
D1 2.0000000 sec
D11 0.0300000 sec
TDO 1
SFO1 150.9178988 MHz
NUC1 13C
P1 3.93 usec
PI 11.80 usec
PLM1 86.66300201 W
SFO2 600.1324005 MHz
NO2 150.9178988 MHz
P2 3.93 usec
PI 11.80 usec
PLM2 17.17900085 W
PCPD 70.00 usec
PLM3 0.25055999 W
F2 - Processing Parameters
SI 32768
SF 150.9025931 MHz
WDW EM
SSB 0
GB 1.00 Hz
CB 0
PC 1.40

HP001



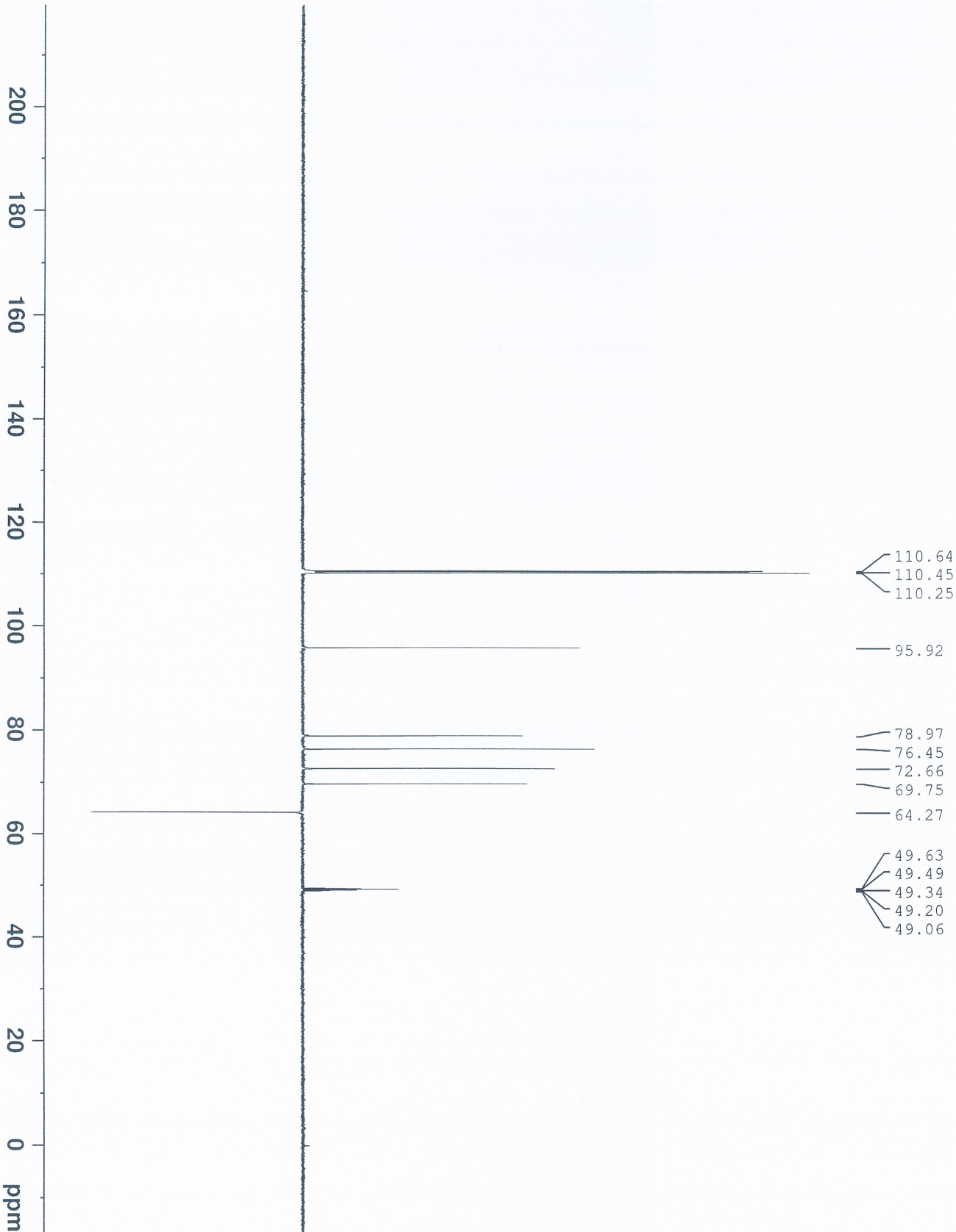
Current Data Parameters
NAME Component 3 of 3
Chebulae Fructus_230401
EXPNO 1
PROCNO 1

F2 - Acquisition Parameters

Date_ 20230113
Time 9.12 h
PULPROG zgpg30
PROBHD 5mm QNP 1H/13C
PULPROG zgpg30
TD 65536
SOLVENT MeOD
NS 4000
DS 8
SWH 35714.285 Hz
FIDRES 1.08913 Hz
AQ 0.9175040 sec
RG 101
DM 14.00 usec
DE 6.50 usec
TE 298.2 K
CNST2 145.0000000
D1 2.0000000 sec
D2 0.00344828 sec
D12 0.0002000 sec
TD0 1
SFO1 150.9178988 MHz
NUC1 13C
P1 11.80 usec
F13 2000.00 usec
P13 0 W
SFO2 600.1324005 MHz
NUC2 1H
SFO3 400.1463000 MHz
NUC3 13C
SFO4 101.3254180 MHz
NUC4 1H
SFO5 0 Hz
SPW5 18.43700027 W
SFO2 600.1324005 MHz
NUC2 1H
CPDPRG12 waltz65
P3 11.92 usec
P4 23.84 usec
PCPD2 70.00 usec
PLW2 17.17900085 W
PLM12 0.49614001 W

F2 - Processing Parameters

SF 12768
WDW EM
SSB 0
LB 1.00 Hz
GB 0
PC 1.40



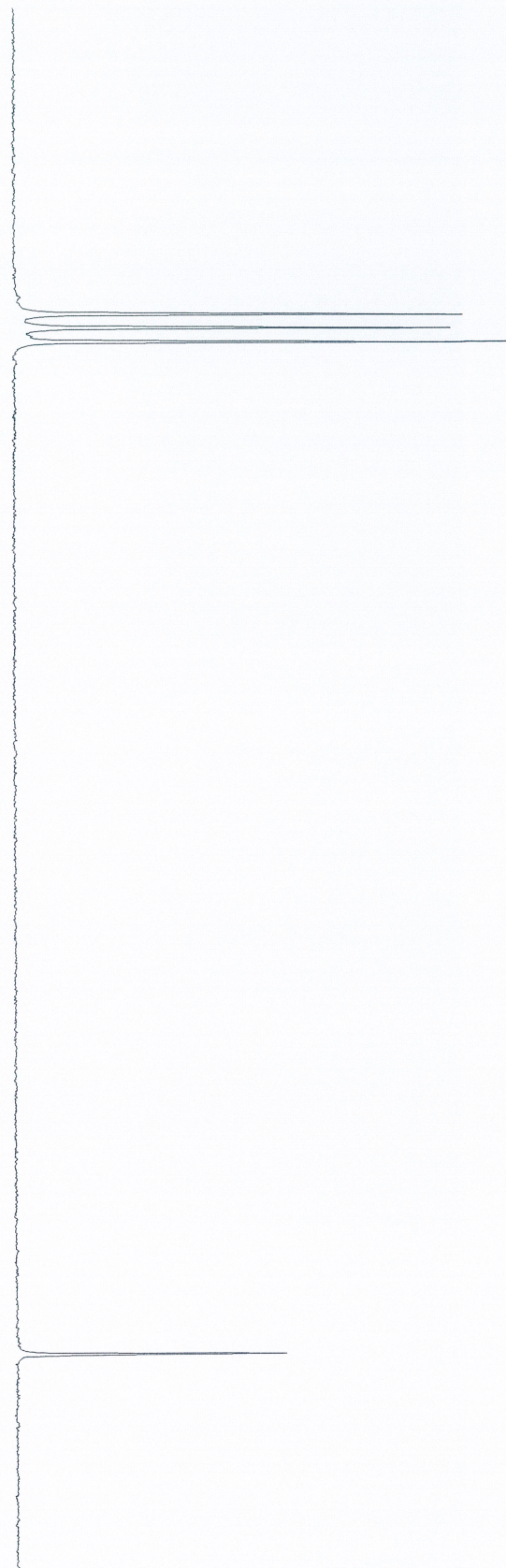
HP001



110.64
110.45
110.25

95.92

114 112 110 108 106 104 102 100 98 96 ppm



Current Data Parameters
NAME Component 3 of 3
CHEMNAME Chebulae Fructus_230401
EXPNO 1
PROCNO 3

F2 - Acquisition Parameters
Date_ 20231013
Time 9.12 h

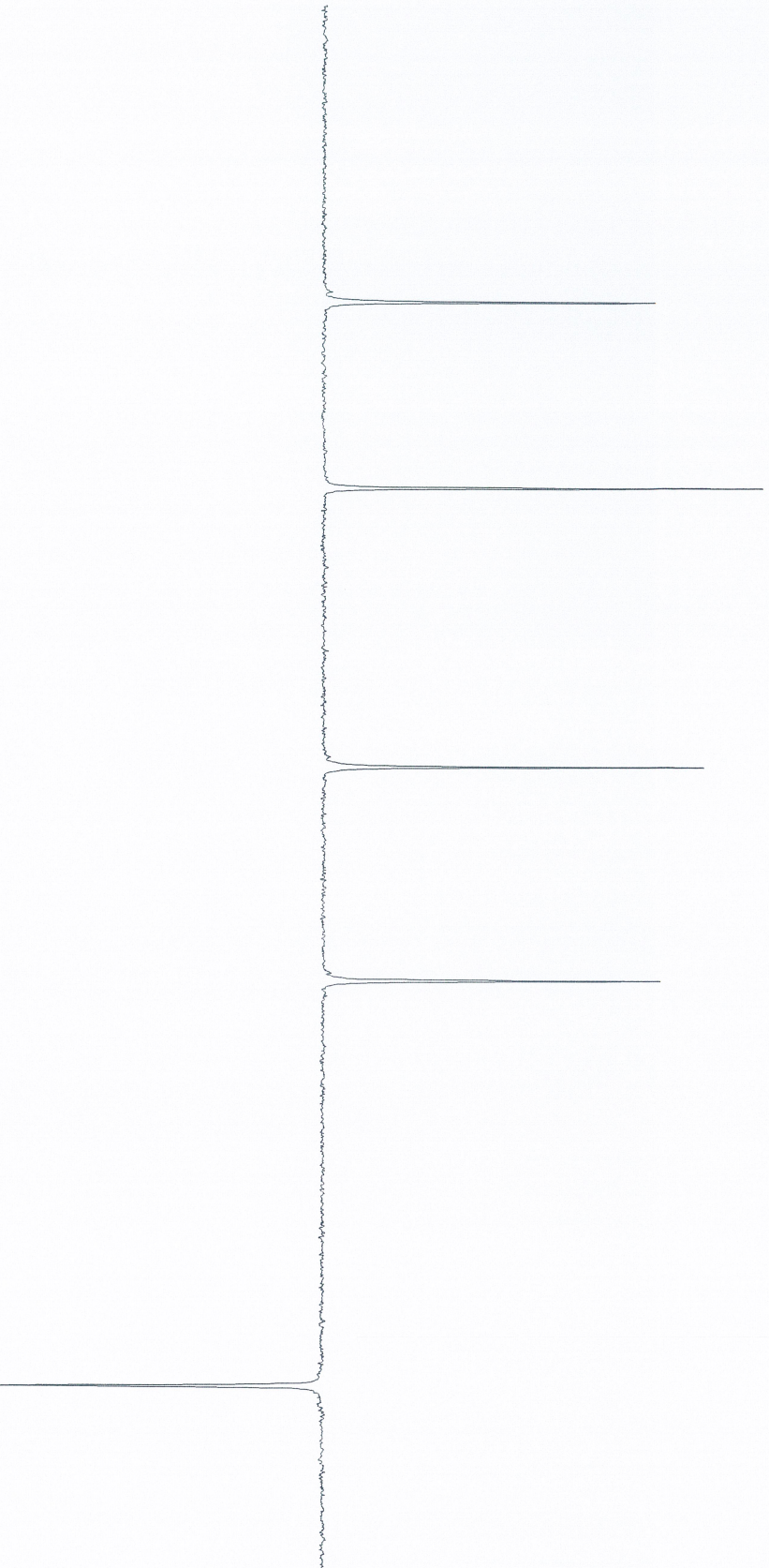
INSTRUM Avance
PROBHD 2172446.0005 (1
PULPROG zgpg30
TD 65536
SOLVENT MeOD
NS 4000
DS 8
SWH 35714.285 Hz
FIDRES 1.08913 Hz
AQ 0.9175101 sec
RG 14.000 usec
DE 6.50 usec
TE 298.2 K
CNS12 145.0000000
D1 2.00000000 sec
D2 0.00344828 sec
D12 0.0002000 sec
TD0 1
SFO1 150.9178988 MHz
NUC1 13C
P1 11.20 usec
F1 13
PI13 2000.00 usec
P1M0 86.66300201 W
SPNAM[5] Crp60comp.4
SFO15 0.500
SFOFFS5 0 Hz
SPW5 18.43700027 W
SFO2 600.1324005 MHz
NUC2 1H
CPDPRG12 waltz65
P3 11.22 usec
P4 2.00 usec
PCPD2 70.00 usec
F1M2 17.17900085 W
P1M12 0.49814001 W

F2 - Processing parameters
SI 32768
SF 150.9025931 MHz
WDW EM
SSB 0
LB 1.00 Hz
GB 0
PC 1.40

HP001



— 78.97
— 76.45
— 72.66
— 69.75
— 64.27



Current Data Parameters
NAME Component 3 of 3
EXPNO 3
PROCNO 1

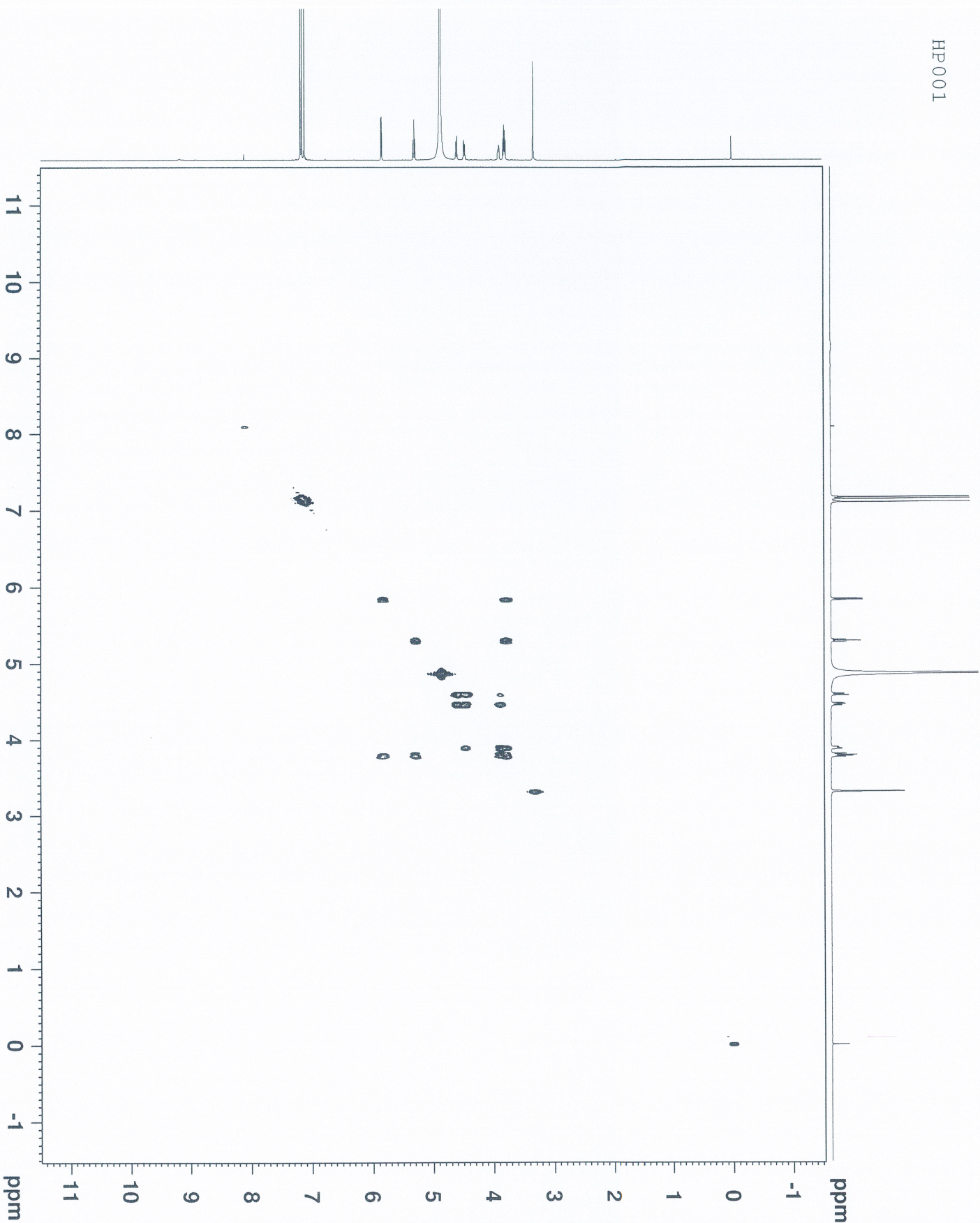
F2 - Acquisition Parameters

Date_ 20231013
Time 9.12 h
INSTRUM Avance
PROBHD 2172446_C0035
PULPROG zgpg30
TD 65536
SOLVENT MeOD
NS 4000
DS 8
SWH 35714.285 Hz
FIDRES 1.08913 Hz
AQ 0.9175040 sec
RG 101
DM 14.000 usec
DE 28.30 usec
TE 300.2 K
CNS12 145.0000000
D1 2.00000000 sec
D2 0.00344828 sec
TD0 0.00002000 sec
SFO1 150.9178988 MHz
NUC1 13C
P1 11.80 usec
P13 2000.00 usec
PLM0 0 W
PLM1 86.66300201 W
SFO11 600.1324005 MHz
SFO12 18.43700027 W
SFO13 0 Hz
SFO14 0.500
SFO15 0 Hz
SFO16 600.1324005 MHz
SFO17 1H
SFO18 11.92 usec
SFO19 23.84 usec
SFO20 70.00 usec
SFO21 17.17900085 W
SFO22 0.49814001 W
SFO23 1.40

F2 - Processing parameters
SI 32768
SF 150.9025931 MHz
WDW EM
SSB 0
LB 1.00 Hz
GB 0
PC 1.40

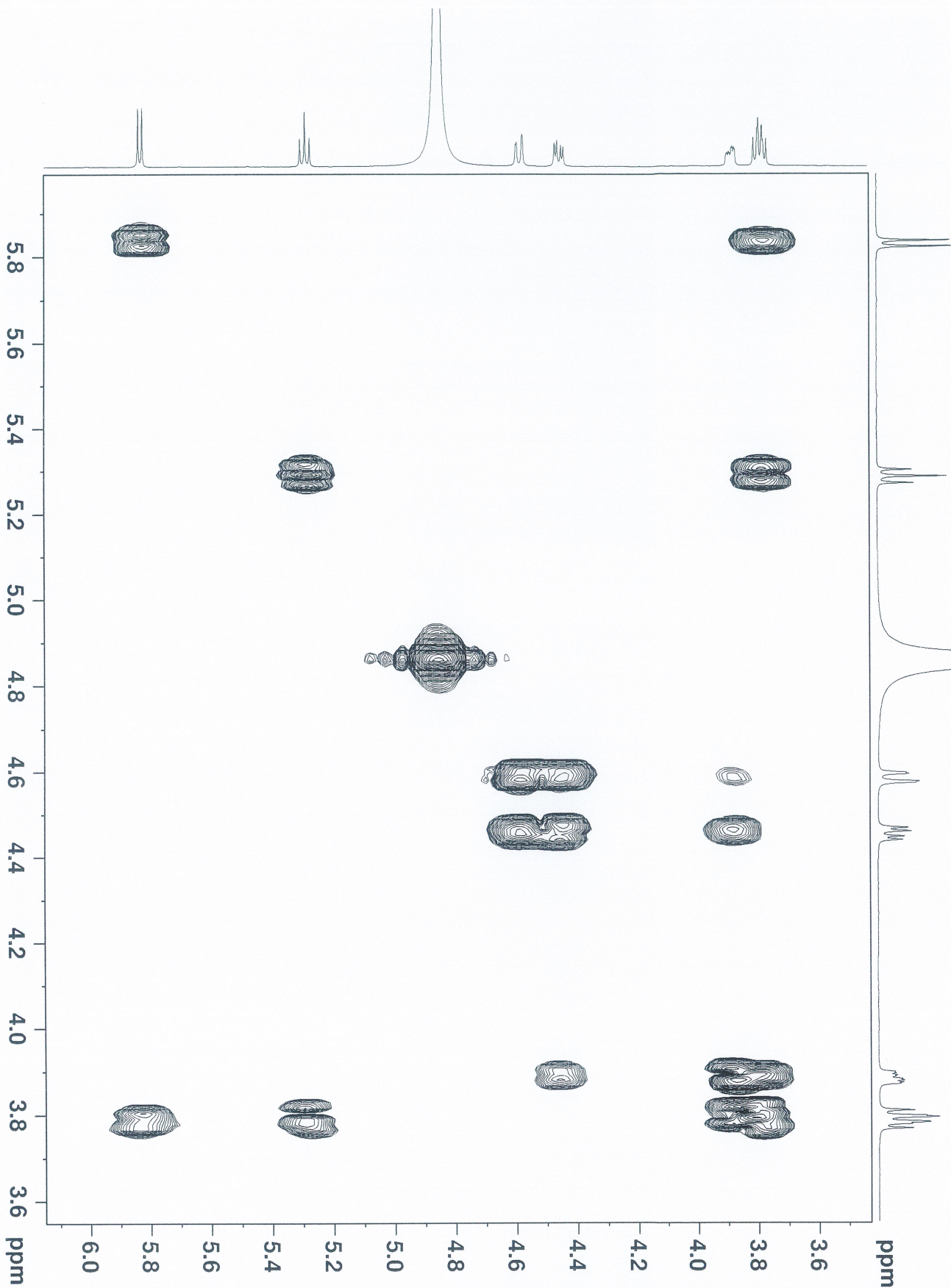
82 81 80 79 78 77 76 75 74 73 72 71 70 69 68 67 66 65 64 ppm

HP001



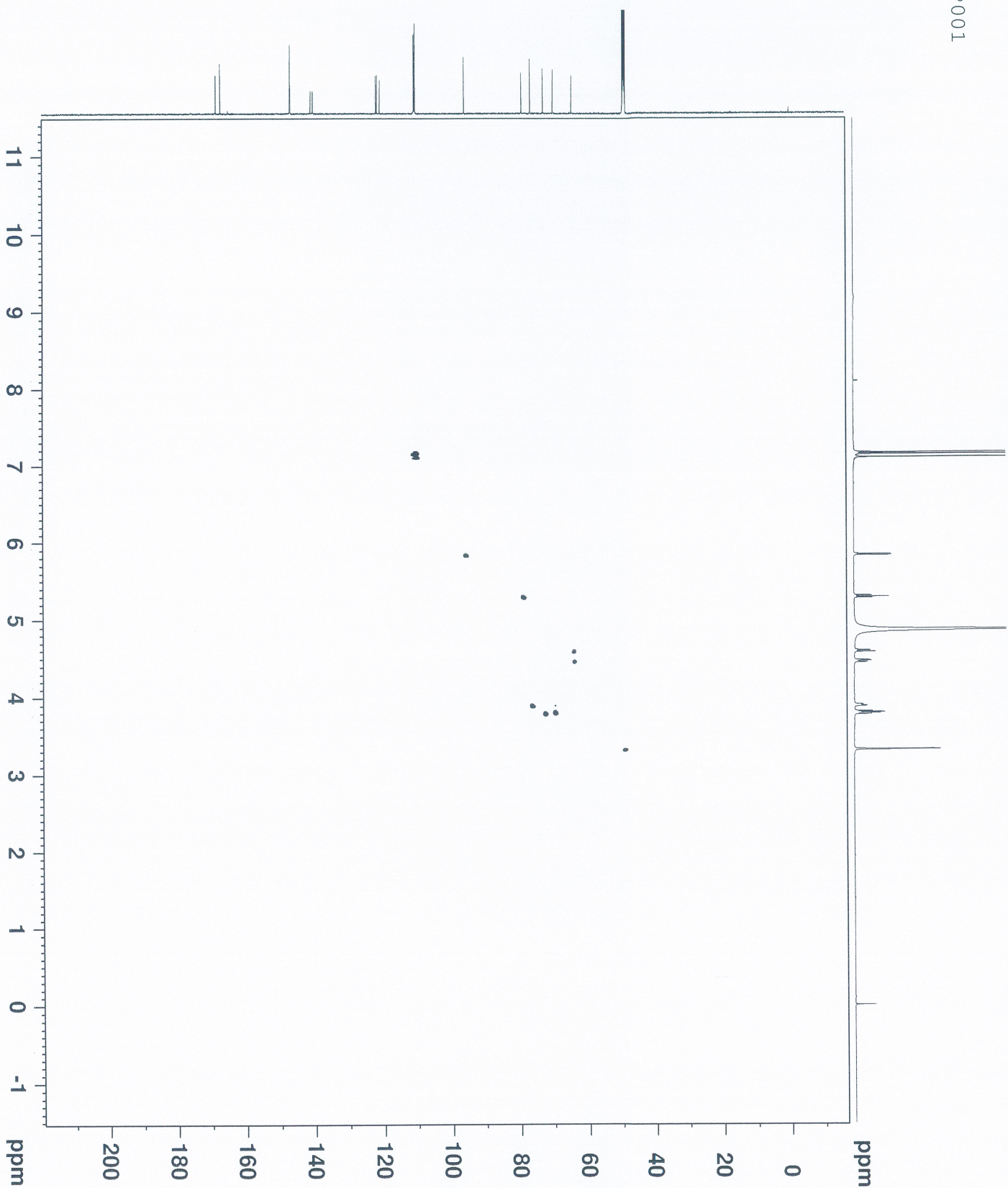
Current Data Parameters
 Name: Component 3 of Chebulae Fructus_230401
 EXPNO: 1
 PROCNO: 1
 F2 - Acquisition Parameters
 Date_: 20231013
 Time: 9:29 h
 Instrument: spect
 PROBD: 2172446.0005
 PULPROG: cosypppgp
 TD: 2048
 SOLVENT: MeOD
 NS: 16
 DS: 16
 SWH: 7812.500 Hz
 FIDRES: 7.629395 Hz
 AQ: 0.1310720 sec
 RG: 64.000
 SFO1: 600.130036 MHz
 DE: 6.50 usec
 TE: 298.1 K
 D0: 0.0000300 sec
 D1: 0.0300000 sec
 D12: 0.0002000 sec
 D13: 0.0000400 sec
 D16: 0.0002000 sec
 TRO: 0.0012800 sec
 SFO1: 600.130036 MHz
 NUC1: 1H
 P0: 11.92 usec
 P1: 1.00 usec
 P2: 250.00 usec
 PLW1: 17.1700085 W
 PLW0: 3.9054000 W
 GPMW(1): SMO10.100
 GZ1: 10.00 %
 P16: 1000.00 usec
 F1 - Acquisition Parameters
 TD: 128
 SFO1: 600.133 MHz
 FIDRES: 122.07013 Hz
 SFO2: 125.76133 MHz
 PULPROG: FPMORE
 F2 - Processing parameters
 SI: 32768
 SF: 600.130116 MHz
 DSF: 4
 SSB: 0
 LB: 0 Hz
 GB: 0
 PC: 1.40
 F1 - Processing parameters
 SI: 1024
 MC2: CF
 SF: 600.130116 MHz
 DSF: 4
 SSB: 0
 LB: 0 Hz
 GB: 0

HP001



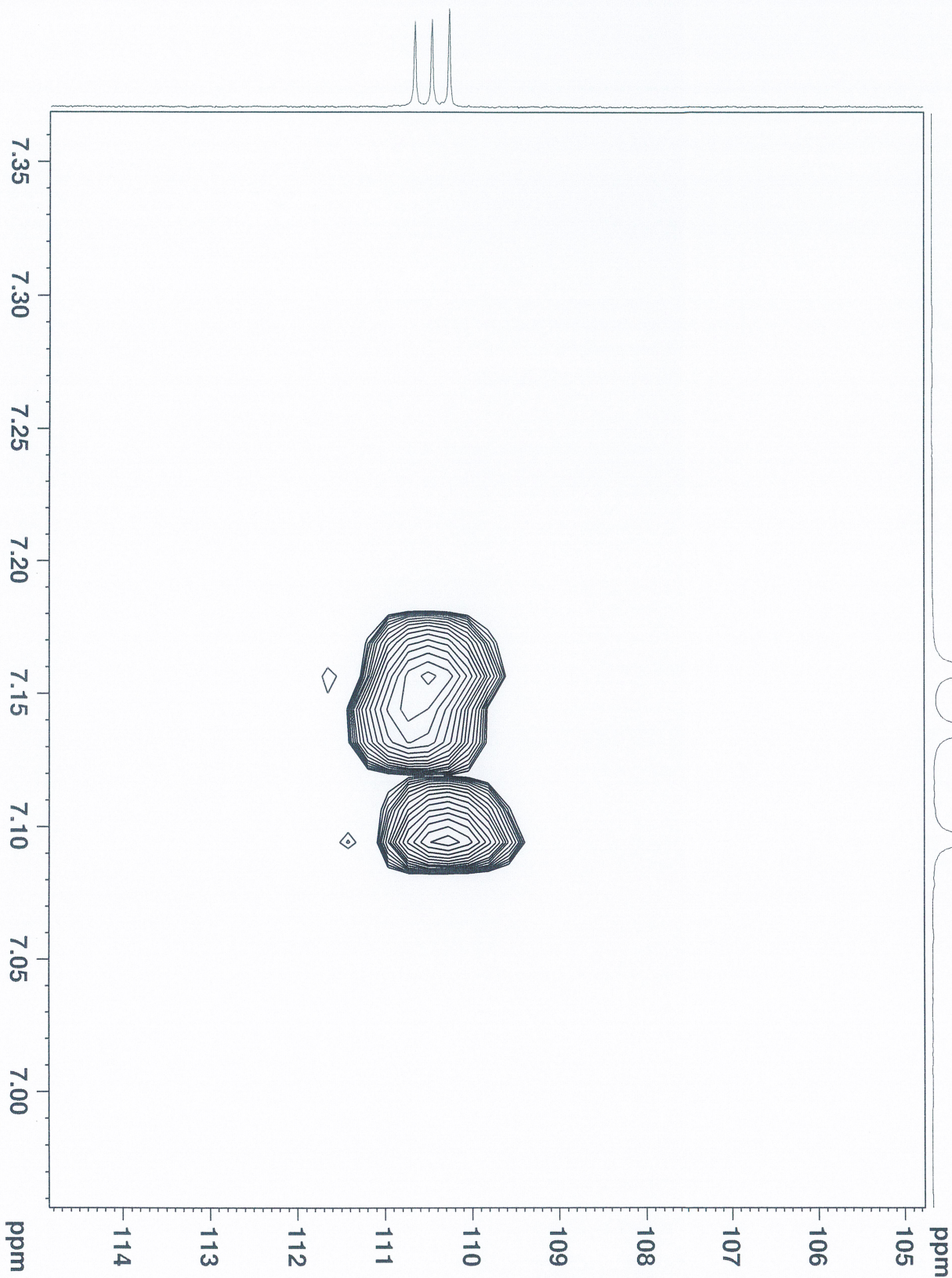
Current Data Parameters
 NAME Component 3 of 3
 CHEMNAME Chebulee Fructose_230401
 EXPNO 1
 PROCNO 1
 F2 - Acquisition Parameters
 Date_ 20231013
 Time 01:03
 INSTRUM Avance
 PROBRD 2172446_C005 (PULPROG
 PULPROG zgpg30
 TD 2048
 SOLVENT H₂O
 NS 16
 DS 16
 SWH 7812.500 Hz
 FIDRES 0.1310720 sec
 AQ 64.000 usec
 DE 298.1 K
 TE 300.2 K
 D0 0.0000000 sec
 D11 0.0300000 sec
 D12 0.0002000 sec
 D13 0.0000400 sec
 D16 0.0002000 sec
 TDAY 0.00012501 sec
 SFO1 600.130006 MHz
 NUC1 1H
 P0 11.92 usec
 P1 11.92 usec
 P2 11.92 usec
 PLW1 17.17900085 W
 PLW10 3.90540004 W
 GRAM(1) SMO10.100
 GZ1 10.00 %
 F10 100.00 usec
 F1 - Acquisition Parameters
 TD 128
 SFO1 600.130006 MHz
 FIDRES 122.0000000 Hz
 SW 13.018 ppm
 FWHM 0.40 Hz
 ENCODE OF
 F2 - Processing Parameters
 SI 1024
 MC2 600.130010 MHz
 WDW COSINE
 SSB 0 Hz
 LB 0 Hz
 GB 0 Hz
 PC 1.40

HP001



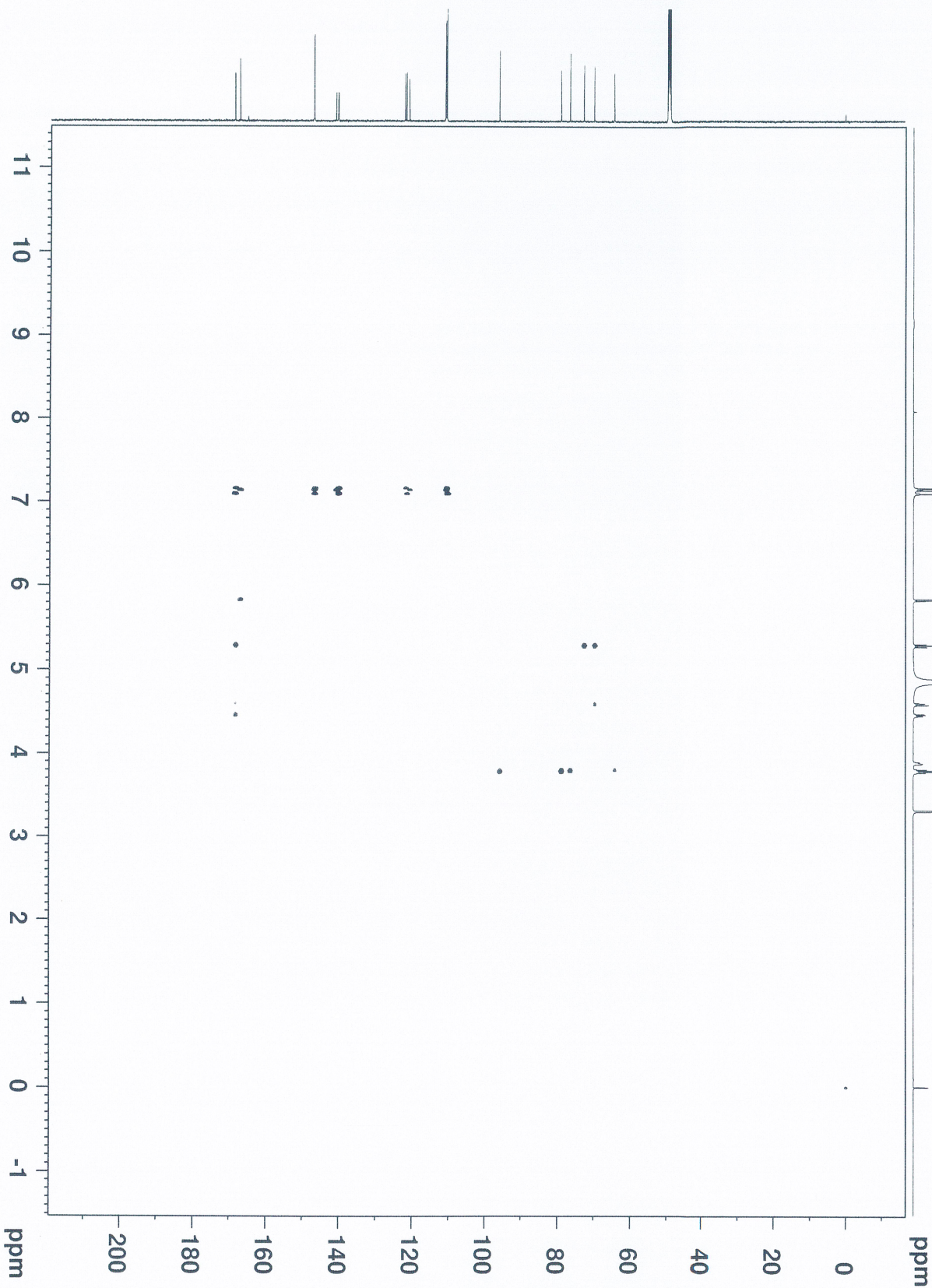
Current Data Parameters
NAME Component 3 of 3
PROBHD Chebulae Fructus 230401
PROCNO 1
F2 - Acquisition Parameters
Date_ 20121134
Time_ 20121134 h
INSTRUM Avance
PROBHD 2172446.0005 f
PULPROG zgpg30
TD 65536
SOLVENT H₂O
NS 320
DS 4
SWH 7812.500 Hz
FIDRES 7.623395 Hz
AQ 0.13100 sec
RG 1024
WDW EM
DE 64.000 usec
TE 300.2 K
CNS17 149.0000000
CNS17 -0.5000000
NUC1 1H
P1 11.82 usec
P2 19.36 usec
P28 1600.00 usec
PLW1 17.1790085 W
SFO2 150.91938 MHz
CROPC12 b1_jpgpg30-4sp-2
P3 11.80 usec
P4 500.00 usec
P5 200.00 usec
P6 1730.00 usec
P63 1500.00 usec
LW 0 W
P7 86.66300201 W
P8 3.35190010 W
P16 1000.00 usec
P19 600.00 usec
F1 - Acquisition parameters
TD 1024
SFO1 150.91938 MHz
FIDRES 7.623395 Hz
SW 236.015 ppm
FNO1 2
F2 - Processing parameters
SI 1024
SF 600.130014 MHz
WDW EM
SSB 0
LB 0 Hz
GB 0
PC 1.40
F1 - Processing parameters
SI 1024
SF 600.130014 MHz
WDW EM
SSB 0
LB 0 Hz
GB 0

HP001



Current Data Parameters
 NAME Component 3 of 5
 EXPTNO 1
 PROCNO 1
 F2 - Acquisition Parameters
 Date_ 20231014
 Time_ 13:44
 INSTRUM Avance
 PROBRD 2172446.0005 f
 P1 12.00
 TD 65536
 FIDRES 0.0925531
 AQ 0.1310720
 SOLVENT MeOD
 NS 10
 DS 4
 SWH 7812.500 Hz
 FIDRES 7.623395 Hz
 AQ 0.1310720 sec
 DE 64.000 usec
 DE 6.50 usec
 CHS12 149.0000000 K
 CHS17 -0.5000000
 D0 0.0000000 sec
 D1 0.0000000 sec
 D4 0.0017244 sec
 D11 0.0300000 sec
 D16 0.0050000 sec
 D21 0.0050000 sec
 D24 0.0009000 sec
 INO 0.0001404 sec
 SFO2 600.133006 MHz
 NUC1 1H
 P1 11.92 usec
 P2 1.92 usec
 P28 1000.00 usec
 PLW1 17.1790085 W
 SFO2 150.9178988 MHz
 CDEPRG12 h1_p5w4sp_4sp_2
 P3 11.80 usec
 P4 500.00 usec
 P7 200.00 usec
 P31 1730.00 usec
 P63 1500.00 usec
 PLW0 0 W
 P1W12 3.35190010 W
 P16 1000.00 usec
 P19 600.00 usec
 F1 - Acquisition parameters
 TD 65536
 SFO1 150.256 MHz
 FIDRES 278.272491 Hz
 SW 236.015 PPM
 FREQ0E Echo-Attn Echo
 F2 - Processing parameters
 SI 1024
 SF 600.1300116 MHz
 SF 150.9025531 MHz
 SSB 03112
 LB 0 Hz
 GB 0
 PC 1.40
 F1 - Processing parameters
 SI 1024
 SF 600.1300116 MHz
 SF 150.9025531 MHz
 WDW QSTINE
 SSB 2
 GB 0 Hz

HP001



Current Data Parameters
NAME: Compound 3
EXPNO: 6
PROCNO: 1
F2 - Acquisition Parameters
Date_: 20230323
Time: 20:35
INSTRUM: Avance
PROBHD: 2172446.0005 (1
PULPROG: hmcetp13nd
ID: 4096
TD: 65536
SOLVENT: MeOD
DS: 4
SSB: 16
SWH: 7812.500 Hz
FIDRES: 3.814697 Hz
AQ: 0.2621440 sec
RG: 101
DM: 64.000 usec
DE: 1024
TE: 298.2 K
CNS16: 120.0000000
CNS17: 170.0000000
CNS18: 8.0000000
D1: 0.00000300 sec
D2: 0.00000300 sec
D3: 0.00000300 sec
D16: 0.0020000 sec
IN0: 0.00001403 sec
TDav: 1
SF01: 600.1330006 MHz
NUC1: 1H
P1: 11.92 usec
PL1: 0.00 dB
PL12: 17.17900085 W
SF02: 150.9178988 MHz
NUC2: 13C
P3: 11.80 usec
PL12: 2000.00 usec
PL12: 86.66302001 W
F16: 150.9178988 MHz
CNS130: 0.1598119
F1 - Acquisition Parameters
TD: 256
SF01: 150.9179 MHz
FIDRES: 278.272491 Hz
SW: 236.015 FPM
FMODE: Echo-Antiecho
F2 - Processing Parameters
SI: 2048
SF: 600.1300127 MHz
WDW: SINE
SSB: 4
LB: 0 Hz
GB: 0
PC: 1.40
F1 - Processing Parameters
SI: 1024
MC2: echo-antiecho
SF: 150.9025931 MHz
WDW: EM
SSB: 0
LB: 0 Hz
GB: 0



Current Data Parameters
NAME Component 3 of 3
CHEBULAE Fructus_230401

EXPERNO 6
PROCNO 1

F2 - Acquisition Parameters
Date_ 20231013
Time 20.35 h

INSTRUM Avance
PROBHD 2172446.0005 (

PD1PRG2 hmbcetgpc130d

TD 4
SOLVENT MeOD

NS 54

DS 16

SWH 7812.500 Hz

FIDRES 3.814697 Hz

AQ 0.262140 sec

RG 400

DE 64.000 usec

TE 298.2 K

CNST6 120.0000000

CNST7 170.0000000

CNST8 100.0000000

CNST13 0.0000300 sec

D1 2.00000000 sec

D6 0.06250000 sec

DL6 0.00020000 sec

INO 0.00001404 sec

TDav 1

SFO1 600.1330000 MHz

NUC1 13C

P1 11.92 usec

P2 23.84 usec

PLM1 17.17900085 W

SFO2 150.9178988 MHz

NUC2 13C

P3 1.86 usec

PLM2 200.0000000 W

PLM2 86.66300201 W

PL6 1000.00 usec

CNST30 0.598115

F1 - Acquisition Parameters

TD 150.4756 MHz

PROBHD 2172446.0005 (

SW 236.015 ppm

FNOCDE Echo-Antlecho

F2 - Processing Parameters

SI 2048

SE 600.1300120 MHz

SSB 4

LB 0 Hz

GB 0

PC 1.40

F1 - Processing Parameters

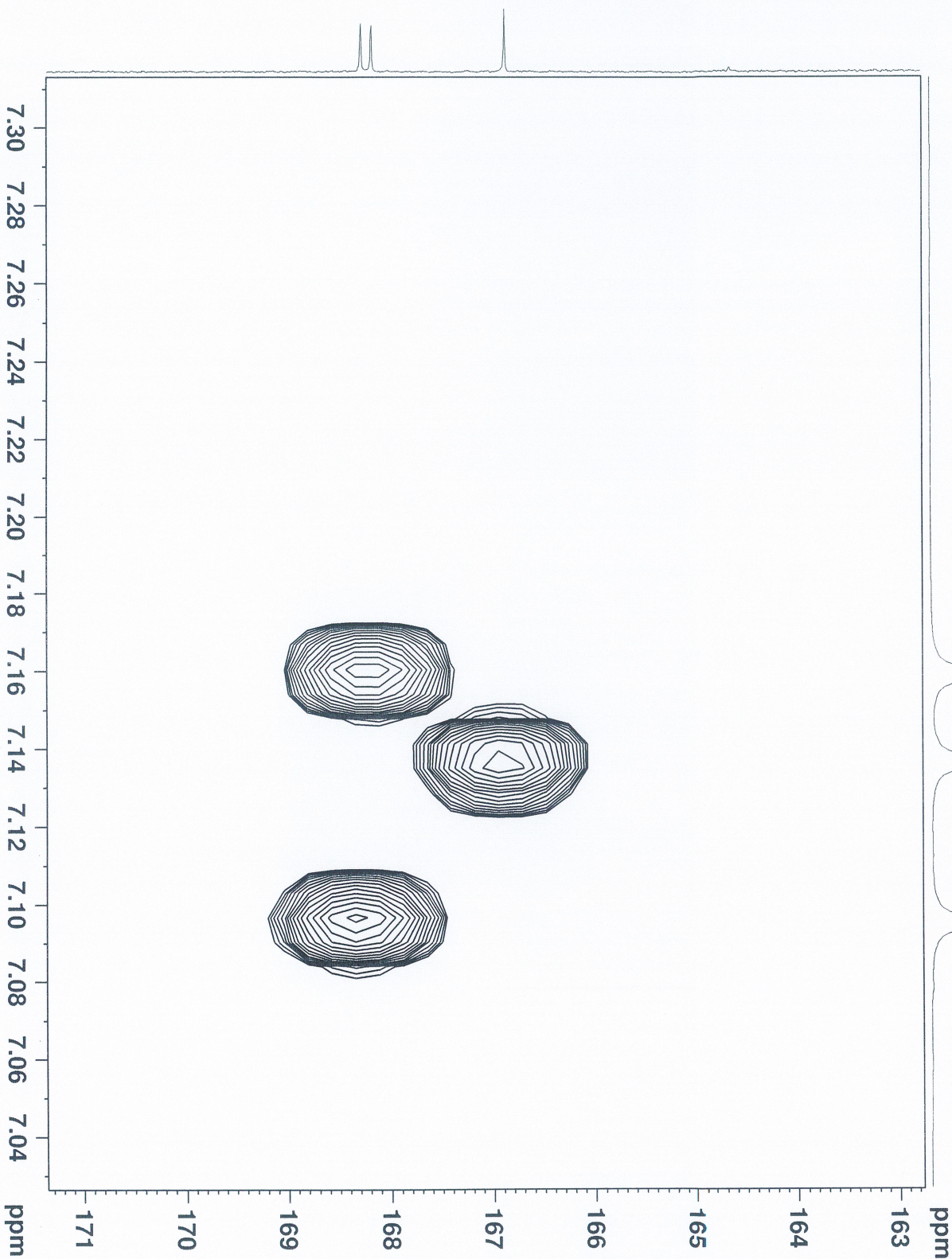
SI 1024

SE 150.9025931 MHz

SSB 2

LB 0 Hz

GB 0





Current Data Parameters

NAME Component 3 of
CHEBULEE FRUCTUS_230401

EXPNO 6
PROCNO 1

F2 - Acquisition Parameters

Date_ 20230310
Time 20:35 h

INSTRUM Avance
PROBHD 2172446_0005 (

PULPROG hmbcetcp13nd
TD 4096

TD 4096
SOLVENT MeOD

DS 16
SWH 7812.500 Hz

FIDRES 3.814697 Hz
AQ 0.2621440 sec

RG 101
DM 64.000 usec

DE 64.000 usec
TE 296.2 K

CNST6 120.0000000
CNST7 170.0000000

CNST13 8.0000000
D0 0.0000300 sec

D1 0.0000300 sec
D2 0.0000300 sec

D16 0.0002000 sec
IN0 0.0003404 sec

TDav 1
SFO1 600.1330006 MHz

NUC1 1H
P1 11.92 usec

P2 11.92 usec
PL1 17.1790085 W usec

SFO2 150.9178988 MHz
NUC2 13C

P3 11.80 usec
P4 2000.00 usec

PW2 86.6500201 W
P3 11.80 usec

CNST30 0.59815
F1 - Acquisition Parameters

TD 256
SFO1 150.9179 MHz

FIDRES 278.272491 Hz
SM 226.015 ppm

FMODE Echo-Antiecho
F2 - Processing Parameters

SI 2048
SF 600.1300127 MHz

WDW SSB
GB 4

PC 1.40
F1 - Processing Parameters

SI 1024
MC2 echo-antiecho

SF 150.9028931 MHz
WDW COSY

SSB 2
LB 0 Hz

GB 0
F2 - Processing Parameters





Current Data Parameters
NAME Component 3 of 3
CHEBULAE Fructus_230401

EXPNO 6
PROCNO 1

F2 - Acquisition Parameters

INSTRUM 2172446.D005 (

PULPROG hmcetcp1.3nd

TD 4096

SOLVENT ReoD

DS 16

SWH 7812.500 Hz

FIDRES 3.814697 Hz

AQ 0.2621440 sec

RG 101

RG 64.000 usec

RG 28.500 usec

RG 28.500 K

CNST6 120.0000000

CNST7 170.0000000

CNST13 8.0000000

D0 0.00000360 sec

D1 0.00000000 sec

D2 0.00000000 sec

D3 0.00000000 sec

D4 0.00000000 sec

INO 0.0001404 sec

TDav 1

SFO1 600.130006 MHz

NUC1 1H

F2 11.82 usec

F2 13.82 usec

PLW1 17.1790085 MHz

SFO2 150.978988 MHz

NUC2 13C

F3 11.80 usec

F2W2 2000.00 usec

F2W2 86.6600201 W

NUC3 13C

CNST30 0.09815

F1 - Acquisition Parameters

TD 256

SFO1 150.9179 MHz

FIDRES 278.272491 Hz

SM 236.015 ppm

FMODE Echo-Antiecho

F2 - Processing Parameters

SI 2048

SF 600.1300127 MHz

WDW SINE

SSB 4

GB 0 Hz

PC 1.40

F1 - Processing Parameters

SI 1024

MC2 echo-antiecho

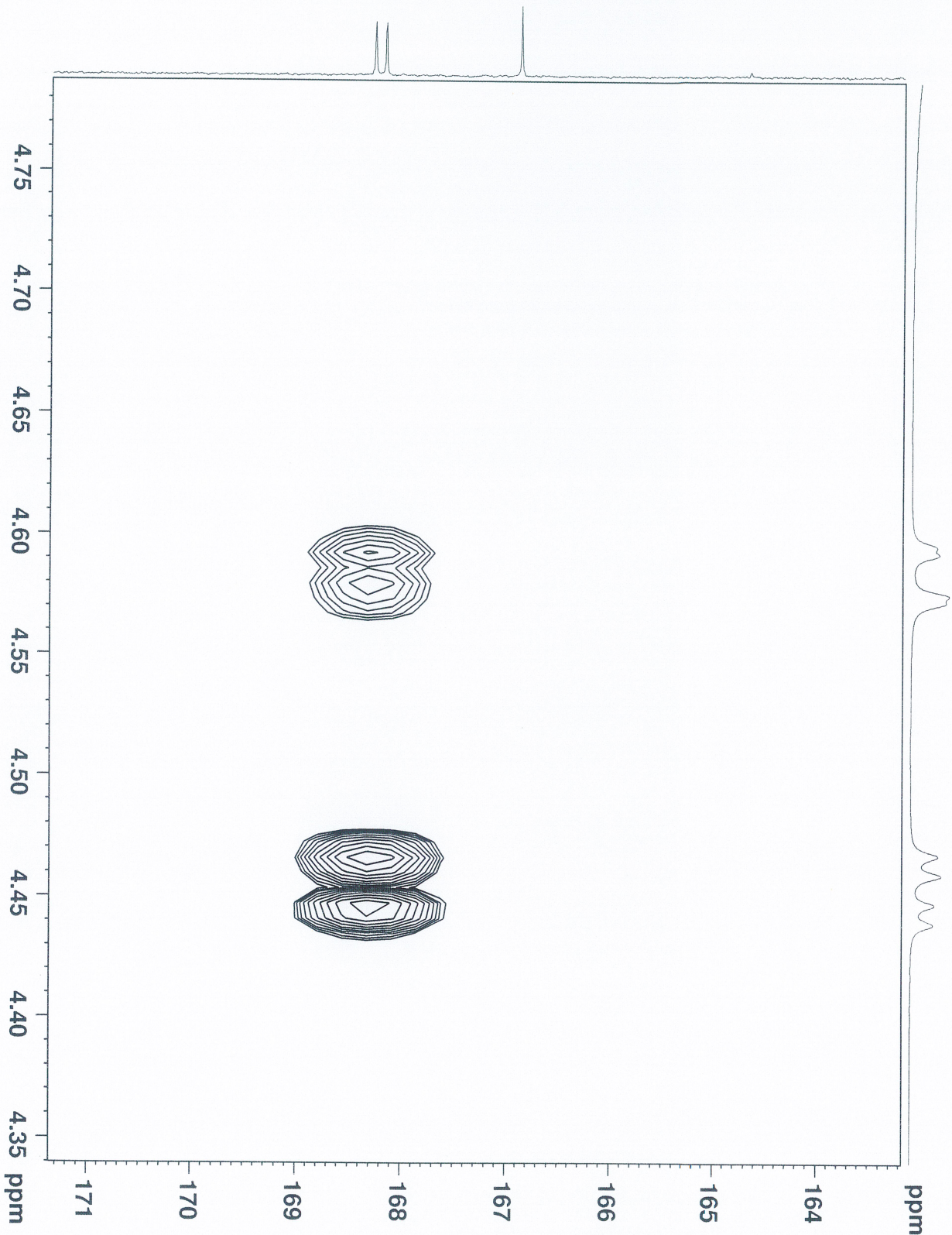
SF 150.9025931 MHz

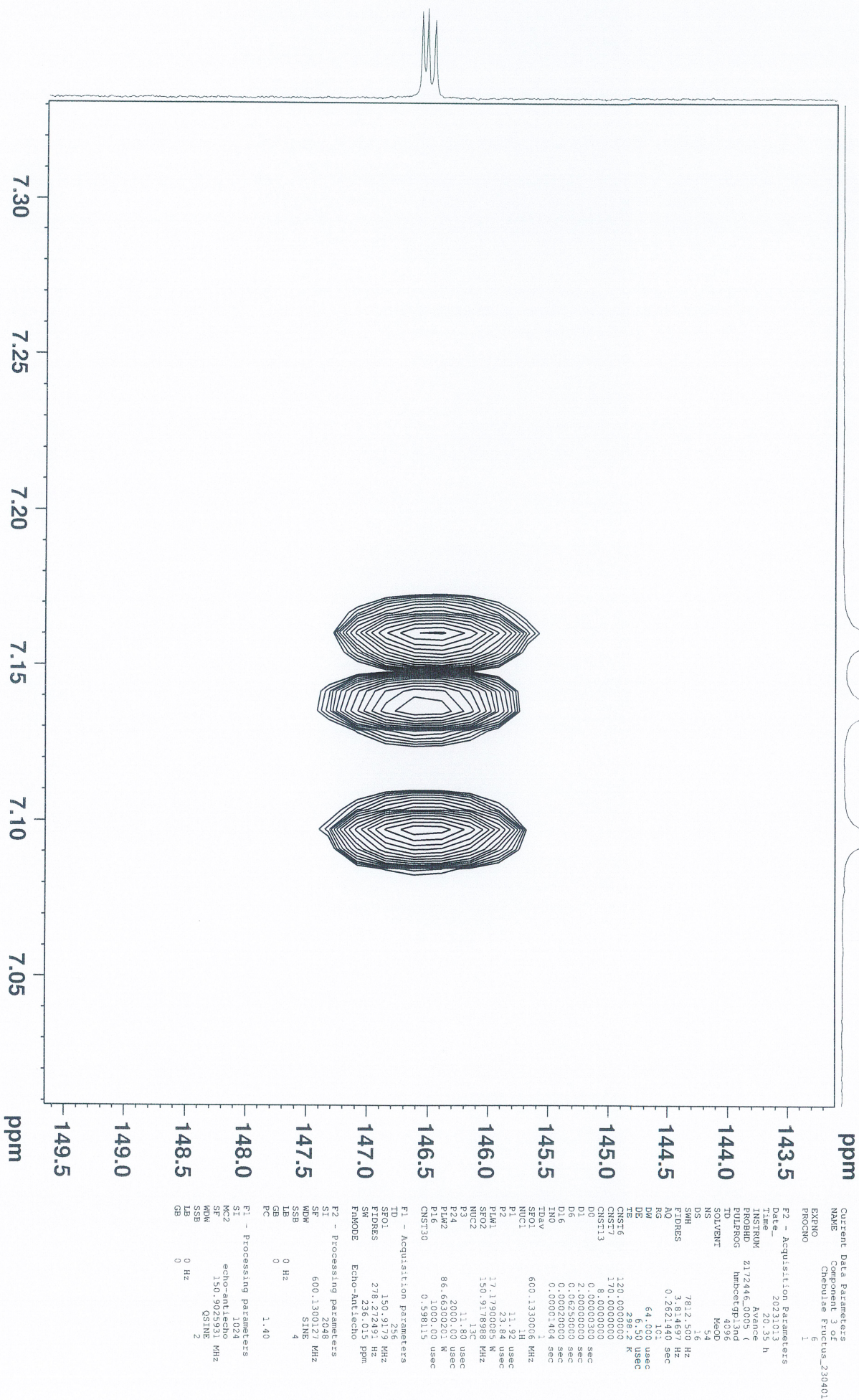
WDW QSINE

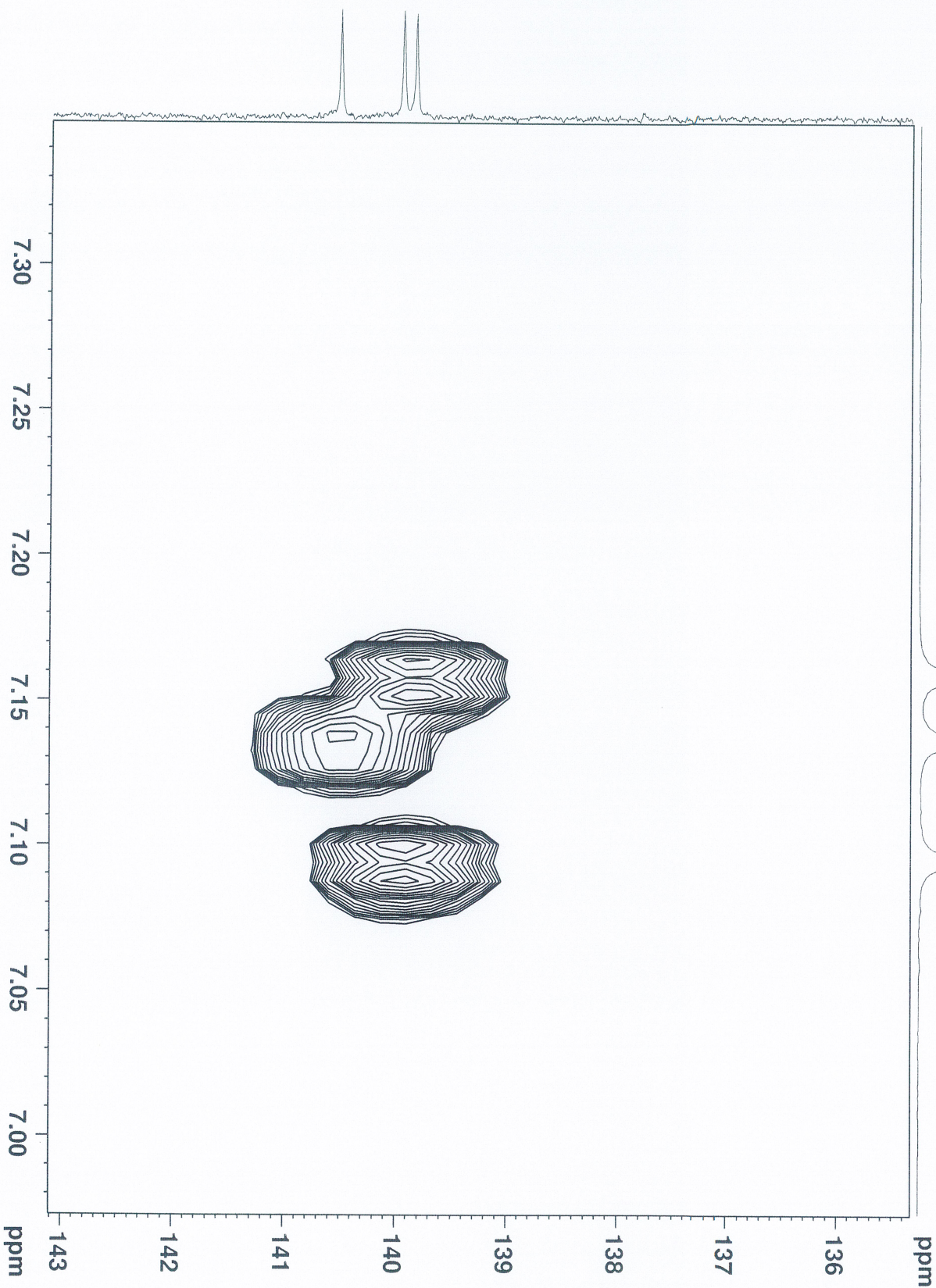
SSB 2

LB 0 Hz

GB 0







Current Data Parameters
NAME Component 3 of 3
Chemical Shifts: 230401

EXPNO 6
PROCNO 1

F2 - Acquisition Parameters

Date_ 20230103

Time 20.35 h

INSTRUM Avance

PROBHD 217246-2005 (

PULPROG hmbcpg1.1nd

ID 4096

TD 65536

DO 1

DS 16

SWH 781.2500 Hz

FIDRES 3.814697 Hz

AQ 0.2621440 sec

RG 101

DM 64.000 usec

DE 170.0000000

TE 298.2 K

CNST6 120.0000000

CNST7 170.0000000

CNST13 8.0000000

D0 0.0000360 sec

D1 0.0000000 sec

D2 0.0625000 sec

D3 0.0002000 sec

D4 0.0001404 sec

TDav 1

SFO1 600.130006 MHz

NUC1 1H

F2 11.82 usec

F2 23.88 usec

PLW1 17.1790085 W

SFO2 150.9176988 MHz

NUC2 13C

F3 11.80 usec

F24 2000.00 usec

PLW2 86.6500201 W

F4 11.80 usec

CNST30 0.598115

F1 - Acquisition Parameters

TD 256

SFO1 150.9179 MHz

FIDRES 278.272491 Hz

SF 226.015 ppm

FMODE Echo-Antiecho

F2 - Processing Parameters

SF 2048

WDW SINE

SSB 4

GB 0 Hz

PC 1.40

F1 - Processing Parameters

SF 1024

MC2 echo-antiecho

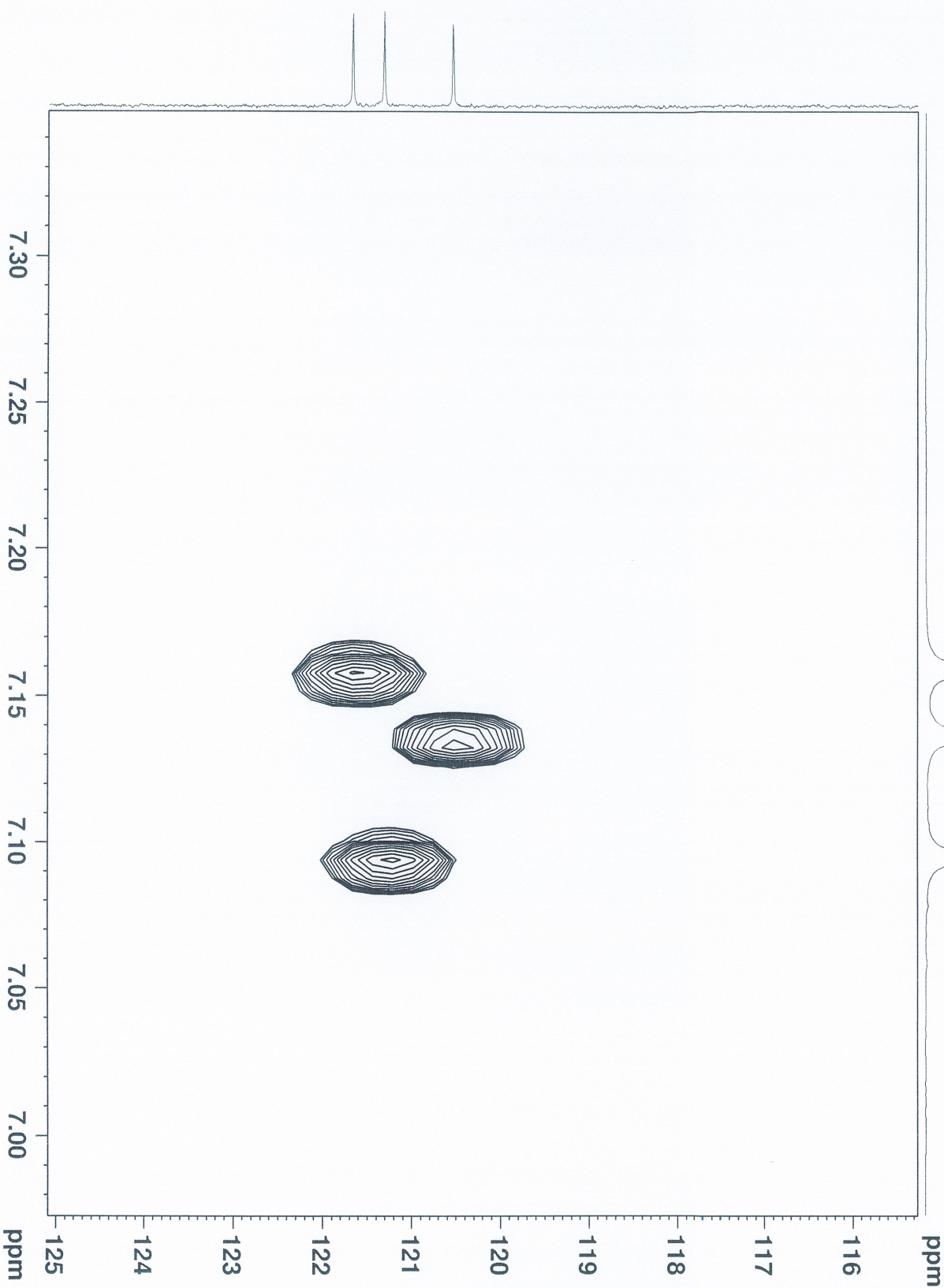
SF 150.9025931 MHz

WDW GQ1M2

SSB 2

LB 0 Hz

GB 0



Current Data Parameters
NAME Component 3 of 6
CHEBUZEE FRUCTUS_230401

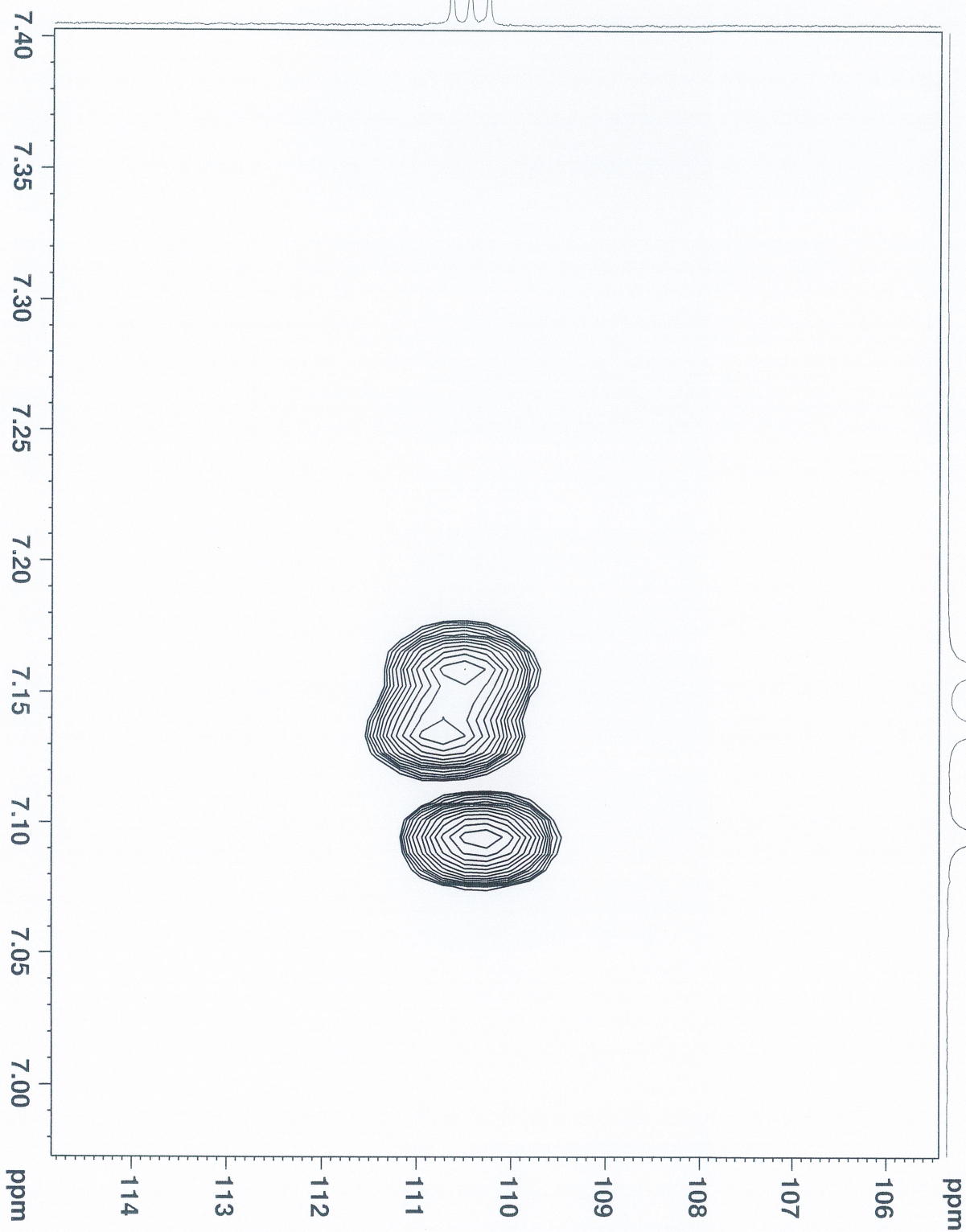
EXPNO 6
PROCNO 1

F2 - Acquisition Parameters
Date_ 20230313
Time 20.35 h
INSTRUM Avance
PROBHD 2172446_0005 (1
PULPROG hmbc4cp13nd
TD 4096
SOLVENT MeOD
NS 16
DS 16
SWH 7832.500 Hz
FIDRES 3.814697 Hz
AQ 0.2621440 sec
RG 101
DM 64.00 usec
DE 15.50 usec
TE 296.2 K
TDav 1
SFO1 600.130006 MHz
NUC1 1H
P1 11.80 usec
PL1 23.84 usec
SFO2 150.91790085 MHz
NUC2 13C
P2 11.80 usec
PL2 2000.00 usec
P3 86.6500201 W
F3 1.2000000 usec
CHST30 0.99815

F1 - Acquisition Parameters
TD 256
SFO1 150.9179 MHz
FIDRES 278.272491 Hz
SFO2 236.015 ppm
EPCODE Echo-Antiecho

F2 - Processing Parameters
SI 2048
SF 600.1300127 MHz
WDW SINE
SSB 4
GB 0 Hz
PC 1.40

F1 - Processing Parameters
SI 1024
MC2 echo-antiecho
SF 150.9028931 MHz
WDW Q9SINE
SSB 2
GB 0 Hz



Current Data Parameters
NAME C:\Program Files\Bruker\WinNMR\Projects\HP001\Chemical\Fructus_230401

EXPNO 6

PROCNO 1

F2 - Acquisition Parameters

Time 20:20:00

h

INSTRUM Avance

PROBHD 2172446-0005 (

PULPROG hmcetcp13nd

TD 4096

TD 4096

hmcetcp13nd

SOLVENT MeOD

NS 16

DS 14

SWH 7812.500 Hz

FIDRES 3.814697 Hz

AQ 0.2621440 sec

RG 101

DW 64.000 usec

DE 28.50 usec

TE 300.2 K

CNSTR6 120.0000000

CNSTR7 170.0000000

CNSTR13 8.0000000

DO 0.0000360 sec

D1 2.0000000 sec

D2 0.0000000 sec

D16 0.0000000 sec

INO 0.0000404 sec

TDav 1

SFO1 600.1330006 MHz

NUC1 1H

F1 11.92 usec

P1 11.92 usec

PLW1 17.1790008 Hz

SFO2 150.978988 MHz

NUC2 13C

P3 11.80 usec

P24 2000.00 usec

PLW2 86.66300201 W

P16 100.00 usec

CNSTR30 0.39815

F1 - Acquisition Parameters

TD 256

SFO1 150.9179 MHz

FIDRES 278.272491 Hz

SW 236.015 ppm

ENCODE Echo-Antiecho

F2 - Processing Parameters

SI 2048

SF 600.1300127 MHz

WDW SINE

SSB 4

LB 0 Hz

PC 1.40

F1 - Processing Parameters

SI 1024

MC2 echo-antiecho

SF 150.9025931 MHz

WDW COSINE

SSB 2

LB 0 Hz

GB 0

HP001



Current Data Parameters
 NAME Component 3 of
 Chebulae Fructus_230401
 EXPNO 6
 PROCNO 1

F2 - Acquisition Parameters
 Date_ 20231013
 Time 20.35 h
 INSTRUM Avance
 PROBHD Z172446_0005 (
 PULPROG hmbcetgp13ad
 TD 4096
 SOLVENT MeOD
 NS 54
 DS 16
 SWH 7812.500 Hz
 FIDRES 3.814697 Hz
 AQ 0.2621440 sec
 RG 101
 DW 64.000 usec
 DE 6.50 usec
 TE 298.2 K
 CNST6 120.0000000
 CNST7 170.0000000
 CNST13 8.0000000
 D0 0.00000300 sec
 D1 2.00000000 sec
 D6 0.06250000 sec
 D16 0.00020000 sec
 IN0 0.00001404 sec
 TDAV 1
 SFO1 600.1330006 MHz
 NUC1 1H
 P1 11.92 usec
 P2 23.84 usec
 PLW1 17.17900085 W
 SFO2 150.9178988 MHz
 NUC2 13C
 P3 11.80 usec
 P24 2000.00 usec
 PLW2 86.66300201 W
 P16 1000.00 usec
 CNST30 0.598115

F1 - Acquisition parameters
 TD 256
 SFO1 150.9179 MHz
 FIDRES 278.272491 Hz
 SW 236.015 ppm
 FMODE Echo-Antiecho

F2 - Processing parameters
 SI 2048
 SF 600.1300127 MHz
 WDW SINE
 SSB 4
 LB 0 Hz
 GB 0
 PC 1.40

F1 - Processing parameters
 SI 1024
 MC2 echo-antiecho
 SF 150.9025931 MHz
 WDW QSINE
 SSB 2
 LB 0 Hz
 GB 0

