

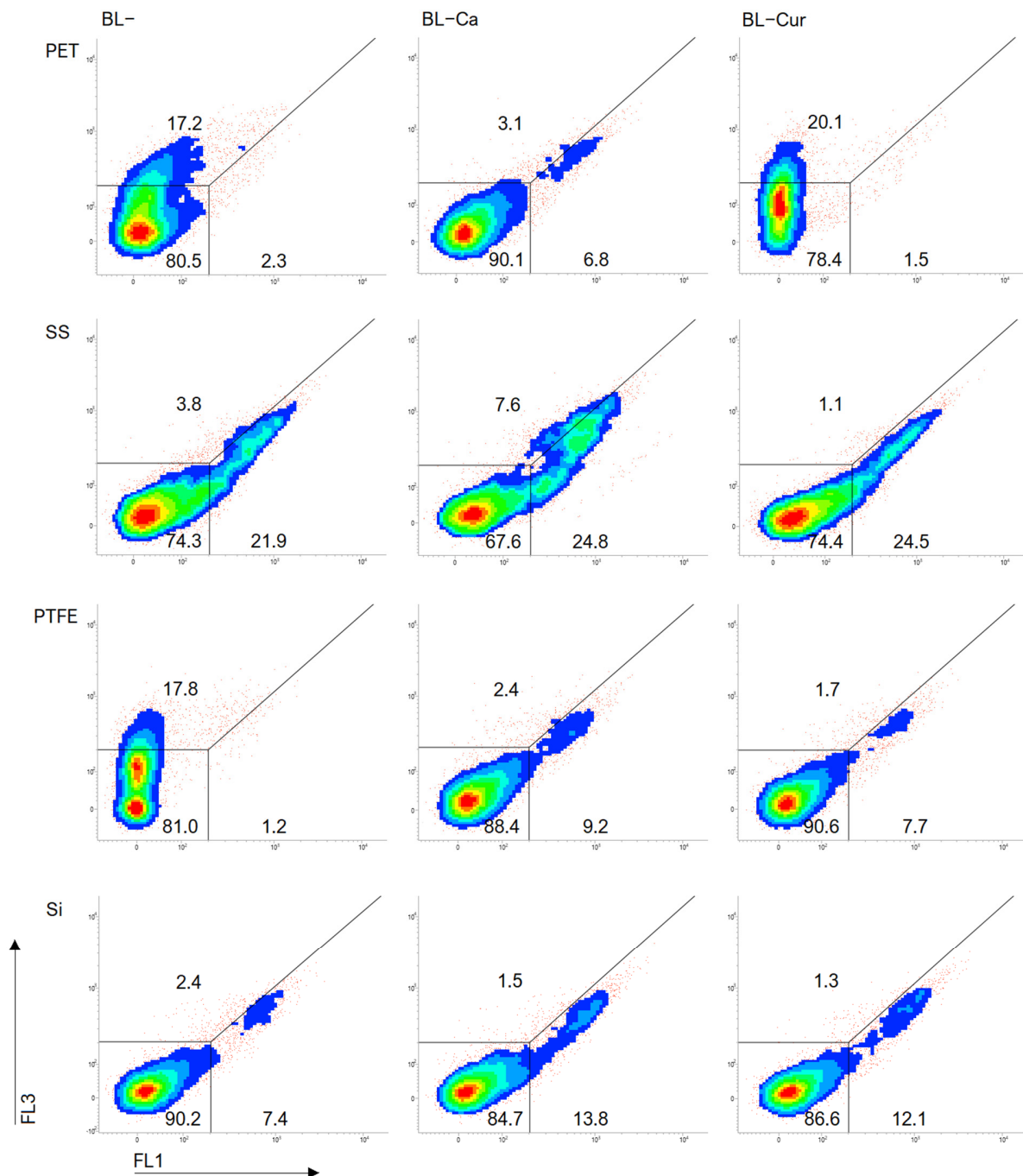
Supplementary Figure S1. Cell numbers of *Listeria monocytogenes* ATCC 15313 planktonic cells and biofilms established on silicone rubber (Si), polytetrafluoroethylene (PTFE), stainless steel 316 (SS), and polyethylene terephthalate (PET) in *Curcuma* L. (Cur)- and *t*-cinnamaldehyde (Ca)-based non-photosensitization (BL-) experiments.

Supplementary Table S1. Percent of *Listeria monocytogenes* ATCC 15313 planktonic cells (% of total) in *Curcuma* L. (Cur)- and *t*-cinnamaldehyde (Ca)-based (non-)photosensitization experiments as measured by FCM with CFDA/PI and TOTO[®]-1 staining.

		CFDA/PI						TOTO [®] -1	
		BL–			BL+			BL–	BL+
	Cells	Dead	Non-active	Active	Dead	Non-active	Active	Dead	Dead
Tx	Alone	16.5±9.9	33.6±0.6	50.0±9.3	7.5±2.5	54.6±14.0	38.0±11.5	4.2±1.3	5.6±1.0
	Ca	6.6±2.9	49.2±6.5	44.2±9.3	13.9±2.5	56.0±3.0	30.2±0.7	4.0±0.5	8.1±2.7
	Cur	7.9±2.2	41.8±1.1	50.2±3.4	29.1±0.2	70.5±0.2	0.4±0.0	5.6±0.9	22.8±2.2

Supplementary Table S2. Percent of *Listeria monocytogenes* ATCC 15313 biofilms established on silicone rubber (Si), polytetrafluoroethylene (PTFE), stainless steel 316 (SS), and polyethylene terephthalate (PET) in *Curcuma* L. (Cur)- and *t*-cinnamaldehyde (Ca)-based non-photosensitization (BL–) experiments as measured by FCM with CFDA/PI.

	BL–			BL– Ca			BL– Cur		
	Dead	Non-active	Active	Dead	Non-active	Active	Dead	Non-active	Active
PET	9.8	41.5	48.7	27.5	26.1	46.5	12.1	57.4	30.5
SS	20.5	29.6	49.9	12.3	46.2	41.6	22.5	44.1	33.4
PTFE	4.9	43.3	50.1	9.2	20.1	70.8	9.0	41.5	49.4
Si	4.7	42.6	52.7	10.0	33.7	56.2	10.4	46.4	43.2



Supplementary Figure S2. FCM dot plots of *Listeria monocytogenes* ATCC 15313 biofilms established on silicone rubber (Si), polytetrafluoroethylene (PTFE), stainless steel 316 (SS), and polyethylene terephthalate (PET) in *Curcuma* L. (Cur)- and *t*-cinnamaldehyde (Ca)-based non-photosensitization (BL-) experiments as measured by FCM with TOTO®-1 staining.