

# Phytocannabinoids: Chromatographic Screening of Cannabinoids and Loading into Lipid Nanoparticles

Aleksandra Zielińska <sup>1,2,\*</sup>, Raquel da Ana <sup>2</sup>, Joel Fonseca <sup>2</sup>, Milena Szalata <sup>3</sup>, Karolina Wielgus <sup>4</sup>, Faezeh Fathi <sup>5</sup>, M. Beatriz P. P. Oliveira <sup>5</sup>, Rafał Staszewski <sup>6</sup>, Jacek Karczewski <sup>7,8</sup> and Eliana B. Souto <sup>2,9,10,\*</sup>

<sup>1</sup> Institute of Human Genetics, Polish Academy of Sciences, Strzeszyńska 32, 60-479 Poznań, Poland

<sup>2</sup> Department of Pharmaceutical Technology, Faculty of Pharmacy, University of Porto, Rua de Jorge Viterbo Ferreira, 228, 4050-313 Porto, Portugal

<sup>3</sup> Department of Biotechnology, Institute of Natural Fibres and Medicinal Plants, National Research Institute, Wojska Polskiego 71B, 60-630 Poznań, Poland

<sup>4</sup> Department of Pediatric Gastroenterology and Metabolic Diseases, Poznan University of Medical Sciences, Szpitalna 27/33, 60-572 Poznan, Poland

<sup>5</sup> REQUIMTE/LAQV, Department of Chemical Sciences, Faculty of Pharmacy, University of Porto, Rua Jorge Viterbo Ferreira no. 280, 4050-313 Porto, Portugal

<sup>6</sup> Department of Hypertension Angiology and Internal Medicine, Poznan University of Medical Sciences, 61-701 Poznań, Poland

<sup>7</sup> Department of Environmental Medicine, Poznan University of Medical Sciences, 61-701 Poznań, Poland

<sup>8</sup> Department of Gastroenterology, Dietetics and Internal Diseases, H. Swieicki University Hospital, Poznan University of Medical Sciences, 60-355 Poznan, Poland

<sup>9</sup> REQUIMTE/UCIBIO, Faculty of Pharmacy, University of Porto, Rua de Jorge Viterbo Ferreira, 228, 4050-313 Porto, Portugal

<sup>10</sup> Associate Laboratory i4HB—Institute for Health and Bioeconomy, Faculty of Pharmacy, University of Porto, 4050-313 Porto, Portugal

\* Correspondence: [aleksandra.zielinska@igcz.poznan.pl](mailto:aleksandra.zielinska@igcz.poznan.pl) (A.Z.); [ebsouto@ff.up.pt](mailto:ebsouto@ff.up.pt) (E.B.S.)

## Sample 1

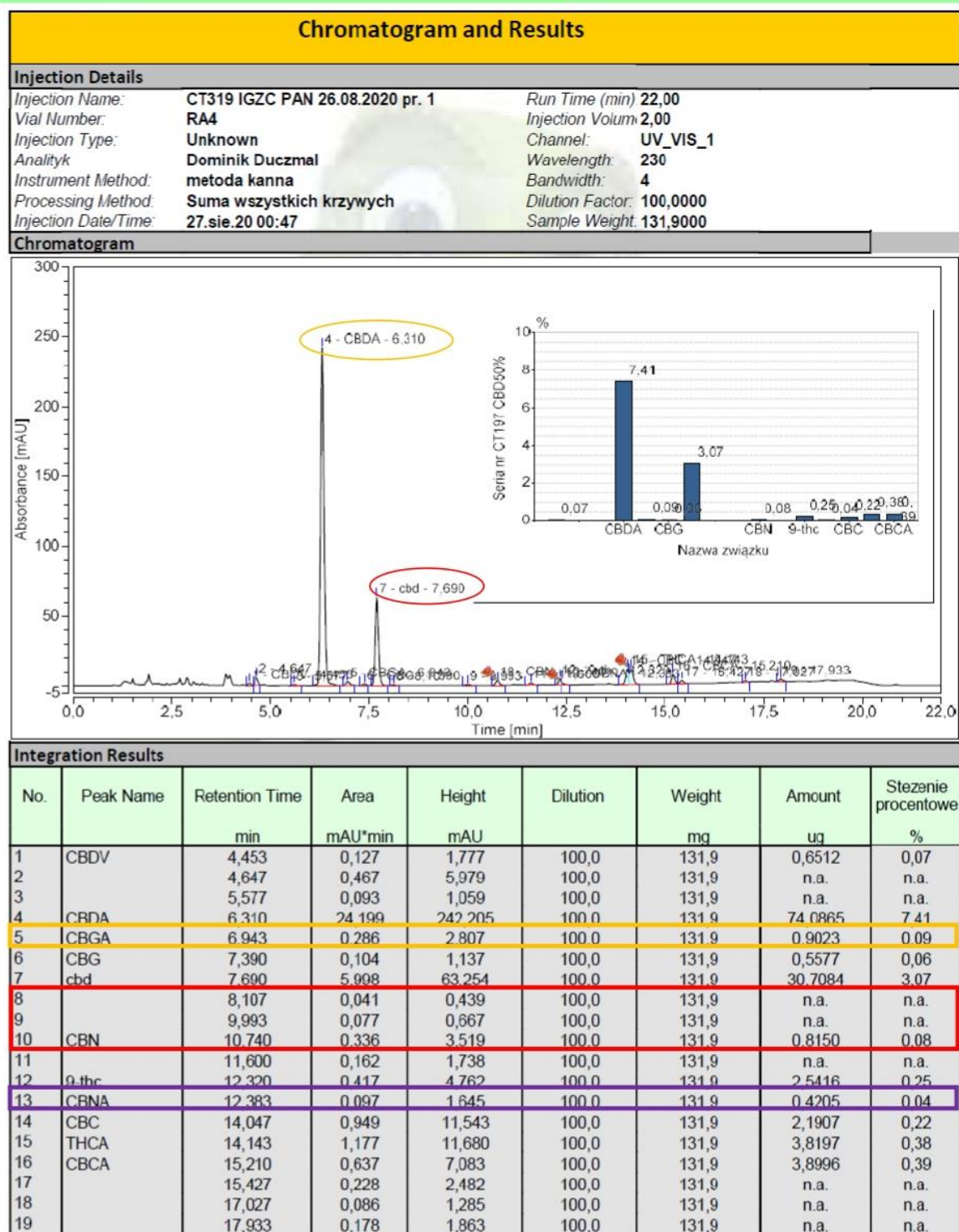


Figure S1. Sample 1 and chromatographic analysis of a cannabinoid extract containing a mixture of cannabinoids.

## Sample 2

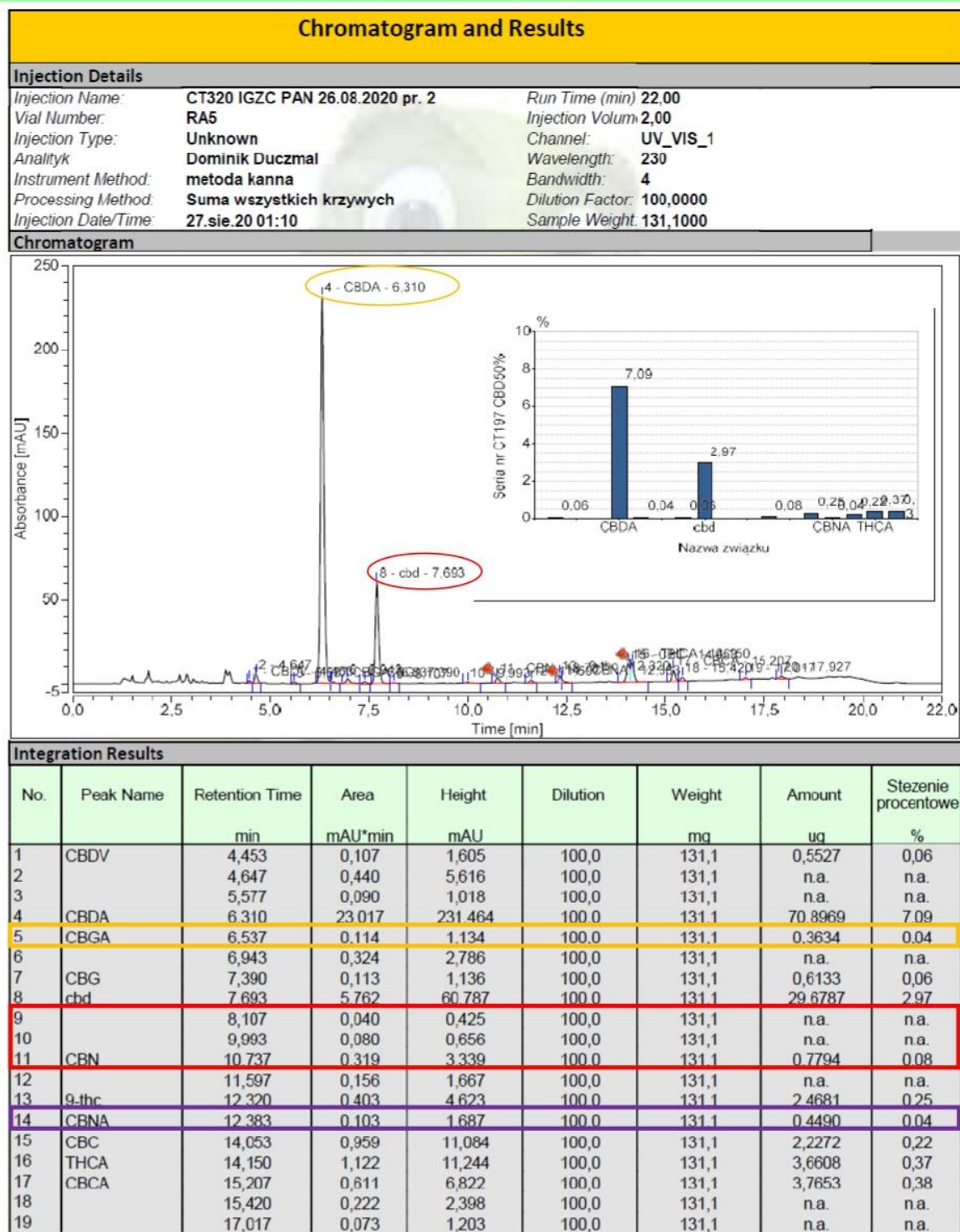


Figure S2. Sample 2 and chromatographic analysis of a cannabinoid extract containing a mixture of cannabinoids.