

Supplementary data to:

“In vitro antiglycation and methylglyoxal trapping effect of peppermint leaf (*Mentha × piperita* L.) and its polyphenols”

Izabela Fecka, Katarzyna Bednarska, Adam Kowalczyk

Department of Pharmacognosy and Herbal Medicines, Faculty of Pharmacy, Wrocław Medical University, ul. Borowska 211, 50-556 Wrocław, Poland

List of Figures:

Figure S1. MS spectra of luteolin authentic standard.

Figure S2. MS spectra of luteolin-MGO mono-adduct 1.

Figure S3. MS spectra of luteolin-MGO mono-adduct 2.

Figure S4. MS spectra of luteolin-MGO di-adduct.

Figure S5. MS spectra of apigenin authentic standard.

Figure S6. MS spectra of apigenin-MGO mono-adduct 1.

Figure S7. MS spectra of apigenin-MGO mono-adduct 2.

Figure S8. MS spectra of apigenin-MGO di-adduct.

Figure S9. MS spectra of eriocitrin authentic standard.

Figure S10. MS spectra of eriocitrin and eriocitrin-MGO mono-adduct 1.

Figure S11. MS spectra of eriocitrin and eriocitrin-MGO mono-adduct 2.

Figure S12. MS spectra of eriocitrin and eriocitrin-MGO mono-adduct 3.

Figure S13. MS spectra of eriocitrin and eriocitrin-MGO mono-adduct 4.

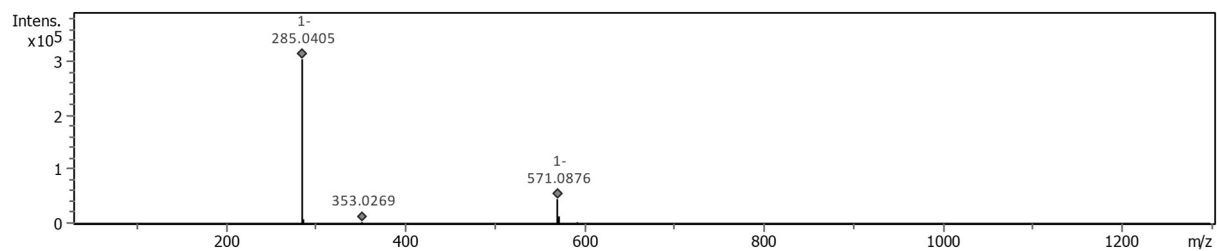


Figure S1. MS spectra of luteolin authentic standard.

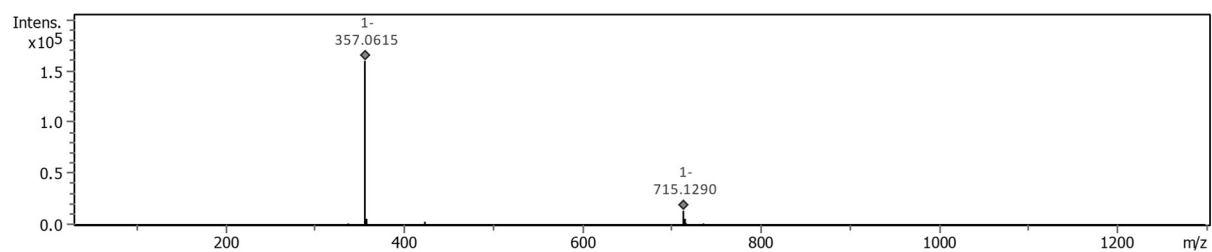


Figure S2. MS spectra of luteolin-MGO mono-adduct 1.

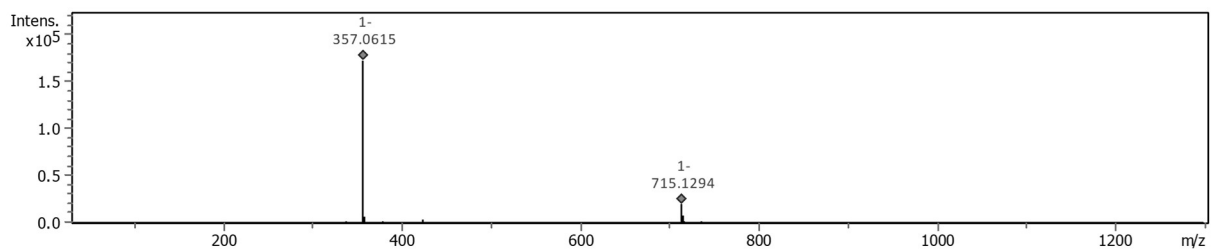


Figure S3. MS spectra of luteolin-MGO mono-adduct 2.

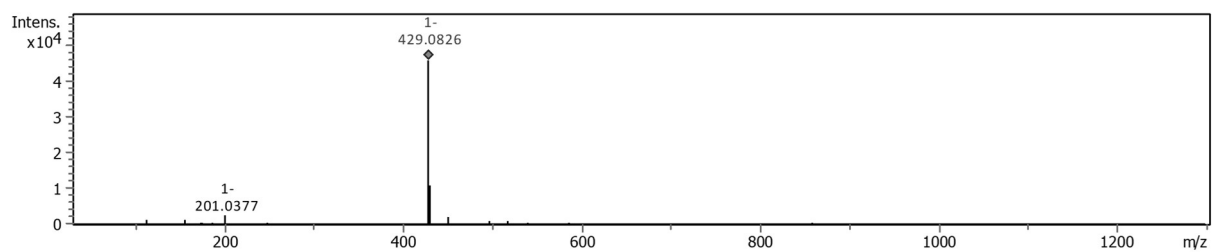


Figure S4. MS spectra of luteolin-MGO di-adduct.

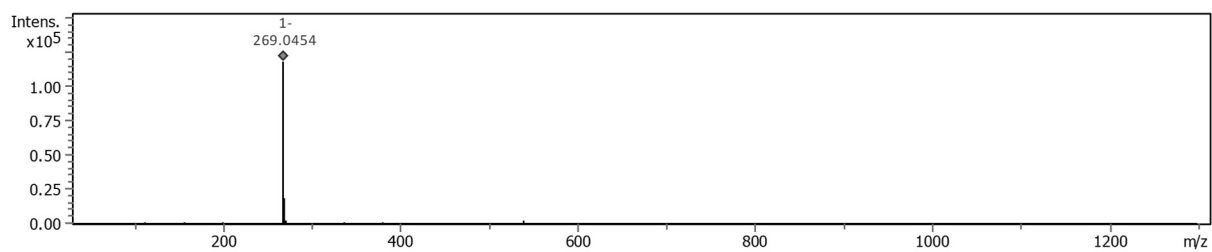


Figure S5. MS spectra of apigenin authentic standard.

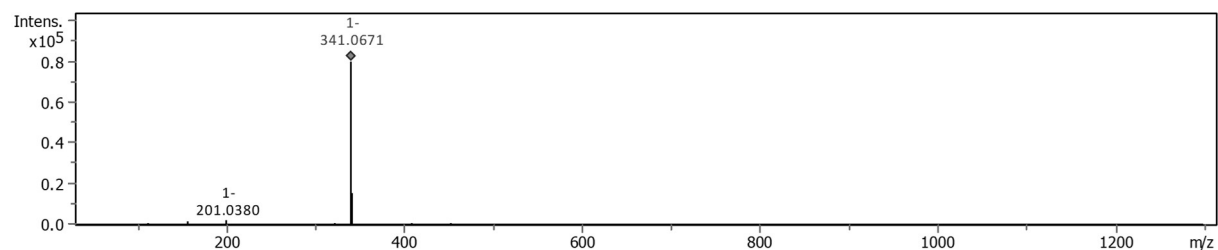


Figure S6. MS spectra of apigenin-MGO mono-adduct 1.

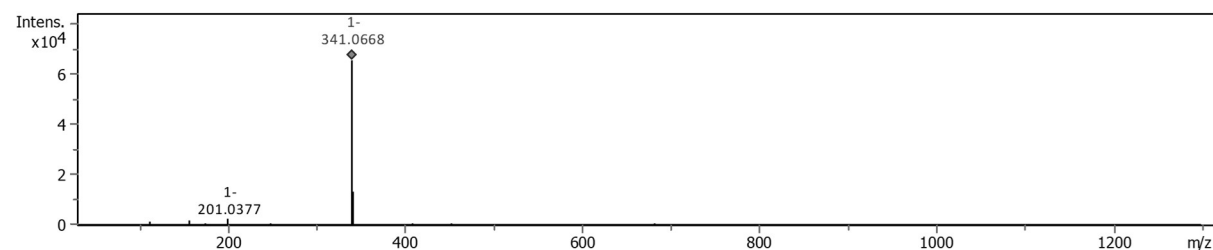


Figure S7. MS spectra of apigenin-MGO mono-adduct 2.

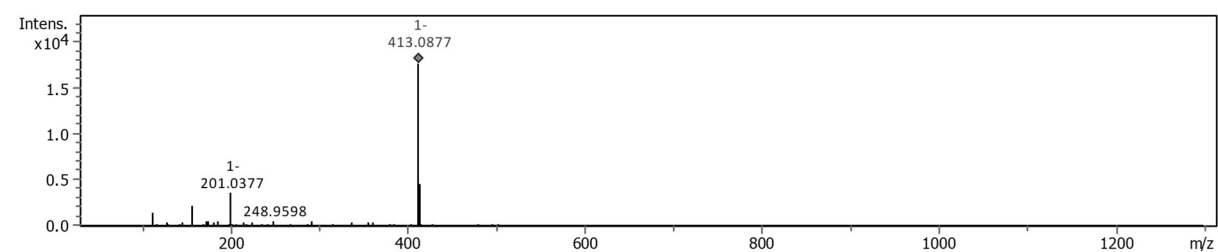


Figure S8. MS spectra of apigenin-MGO di-adduct.

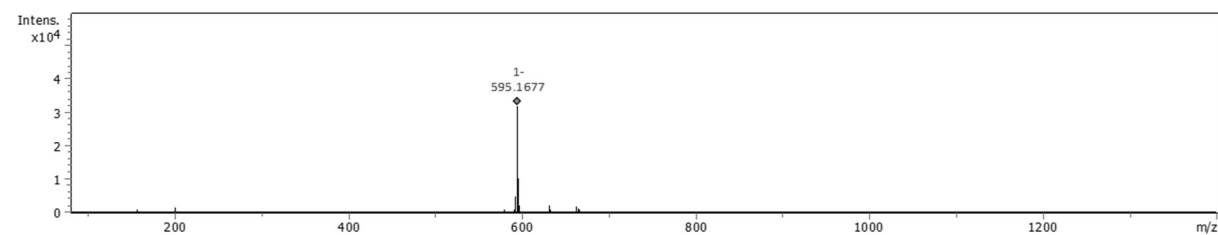


Figure S9. MS spectra of eriocitrin authentic standard.

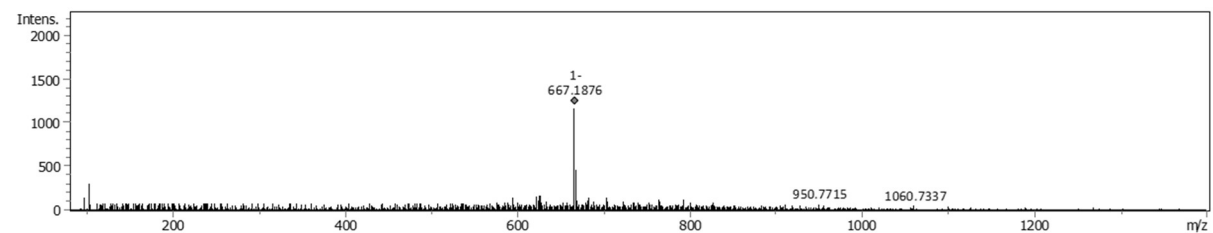


Figure S10. MS spectra of eriocitrin and eriocitrin-MGO mono-adduct 1.

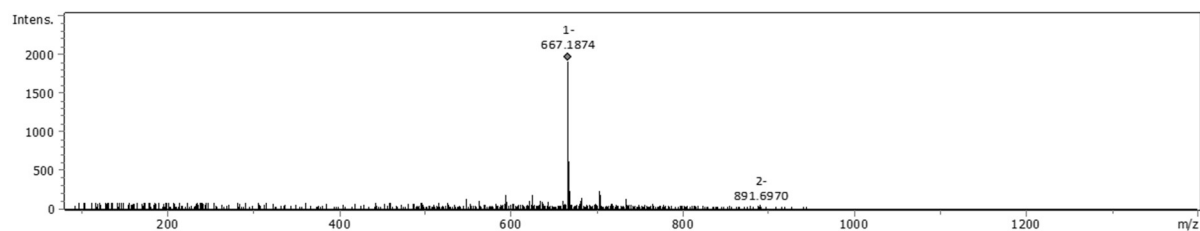


Figure S11. MS spectra of eriocitrin and eriocitrin-MGO mono-adduct 2.

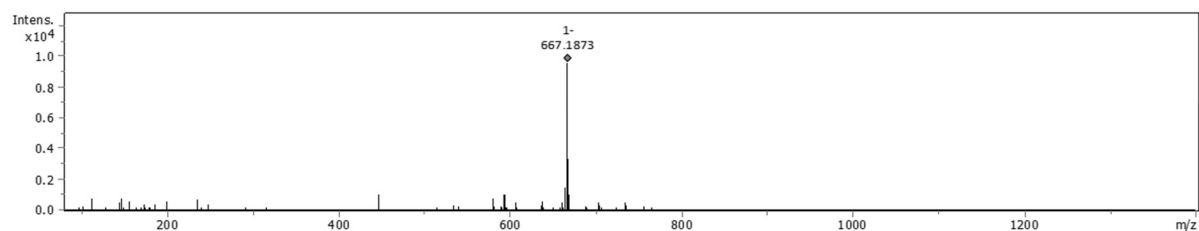


Figure S12. MS spectra of eriocitrin and eriocitrin-MGO mono-adduct 3.

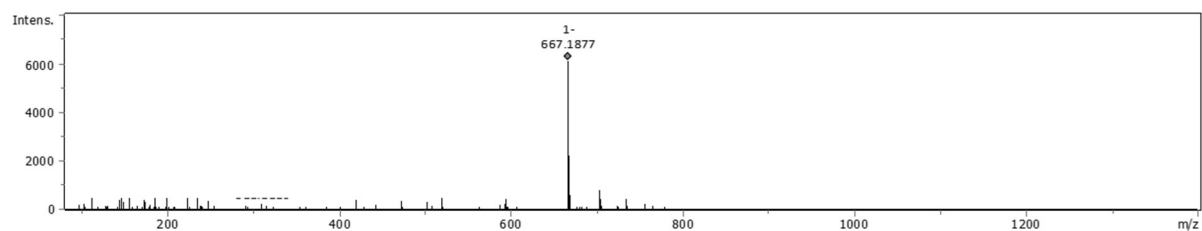


Figure S13. MS spectra of eriocitrin and eriocitrin-MGO mono-adduct 4.