

Support information

Isolation and bioactivity evaluation of the chemical constituents from *Bridelia balansae* Tutcher

Lihan Zhao ^{1,2,†}, **Wen-Jian Xie** ^{1,†}, **Yin-Xiao Du** ^{1,†}, **Yi-Xuan Xia** ¹, **Kang-Lun Liu** ¹, **Chuen Fai Ku** ¹, **Zihao Ou** ⁴, **Ming-Zhong Wang** ^{3,*} and **Hong-Jie Zhang** ^{1,*}

1 School of Chinese Medicine, Hong Kong Baptist University, Kowloon, Hong Kong SAR, China

2 Department of Biology, Georgia State University, Atlanta, GA, USA

3 College of Pharmacy, Shenzhen Technology University, Shenzhen, China

4 Department of Materials Science and Engineering, Stanford University, Stanford, CA 94305, USA

* Correspondance : wangmingzhong@sztu.edu.cn (M.-Z.W.) ; zhanghj@hkbu.edu.hk (H.-J.Z.) ;

† These authors contributed equally to this work.

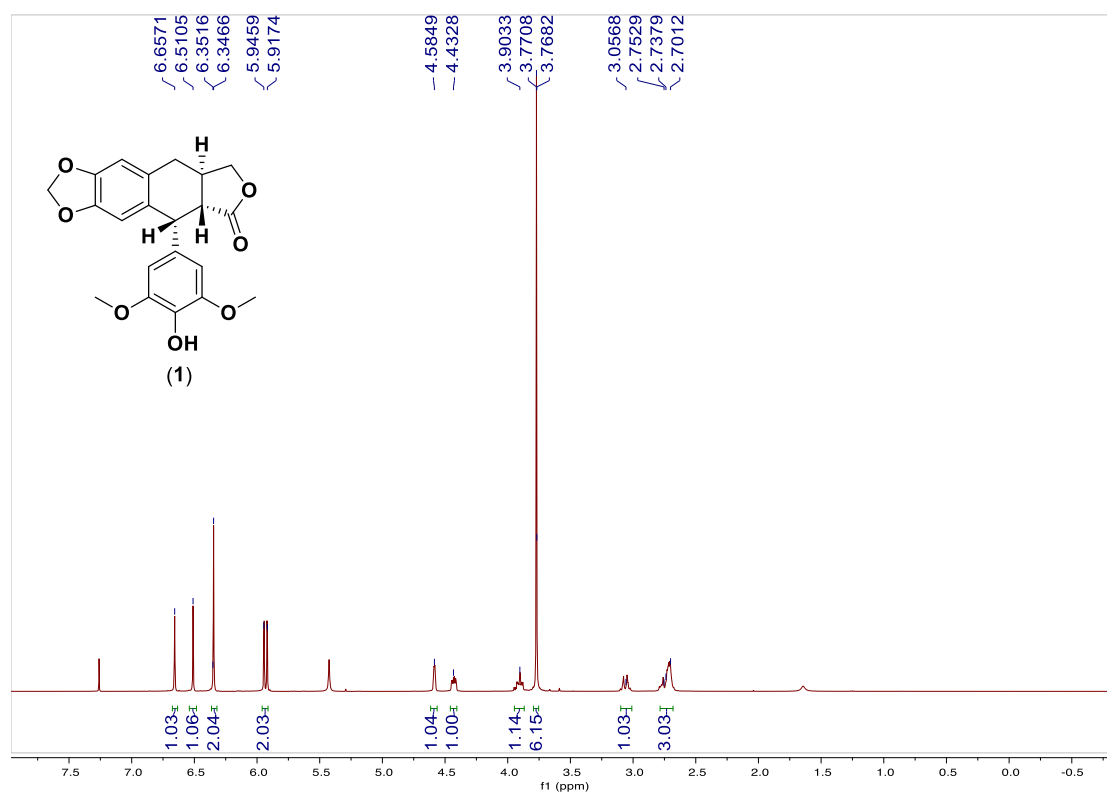


Figure S1. The proton NMR spectrum of compound 1

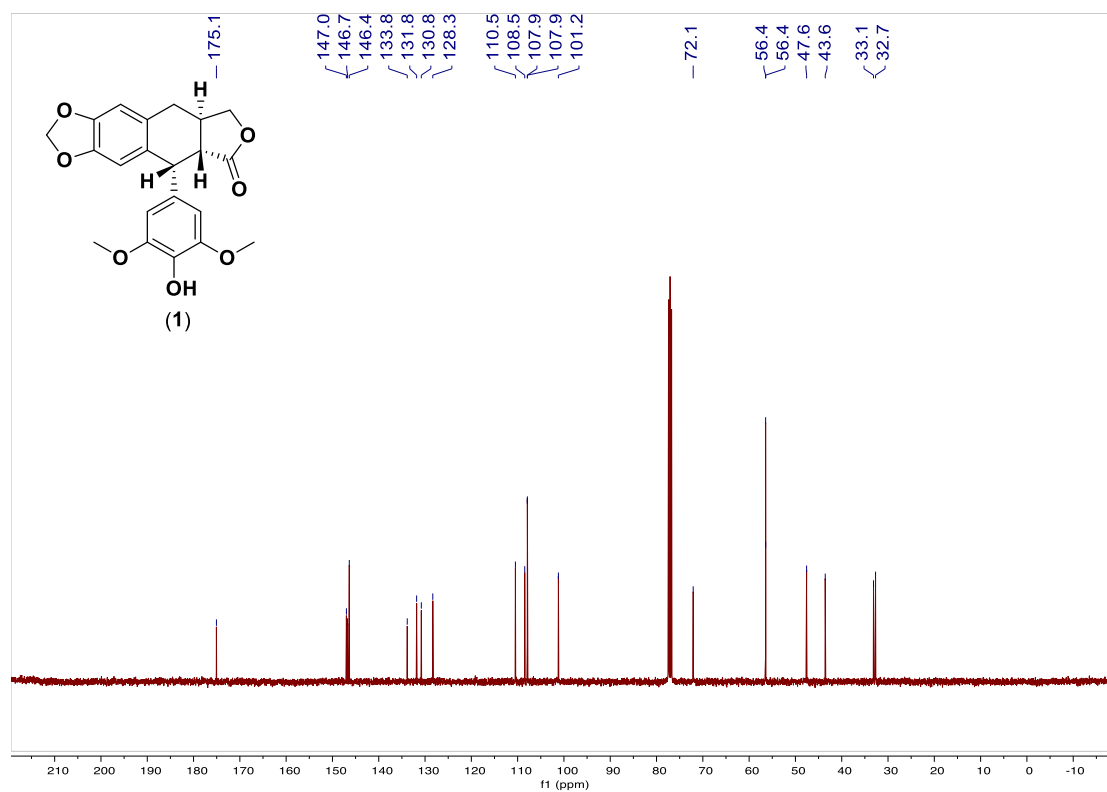


Figure S2. The ^{13}C NMR spectrum of compound 1

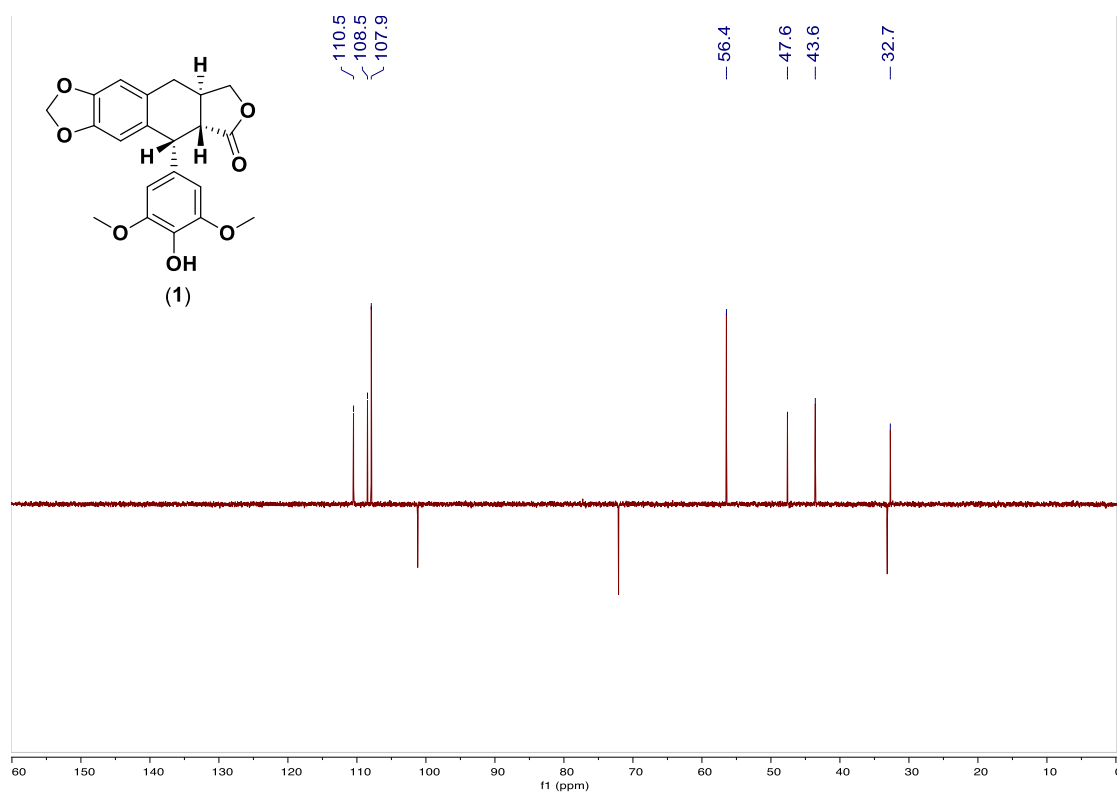


Figure S3. The DEPT135 NMR spectrum of compound 1

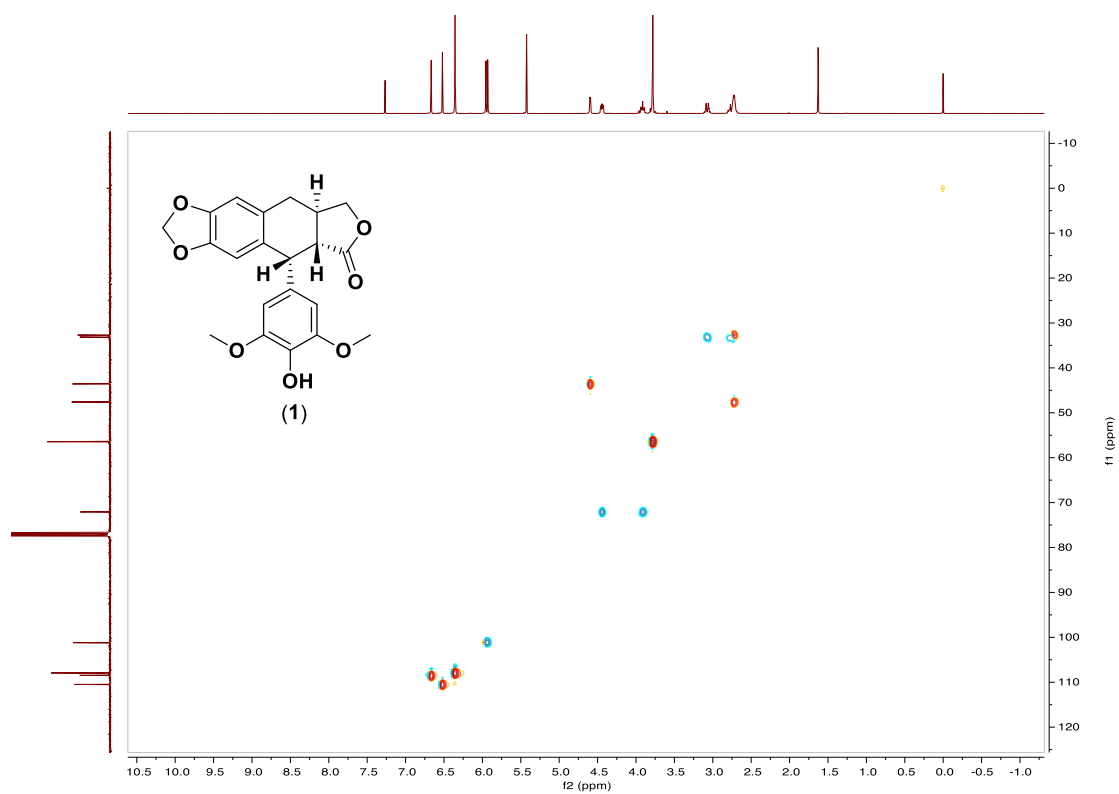


Figure S4. The HSQC NMR spectrum of compound 1

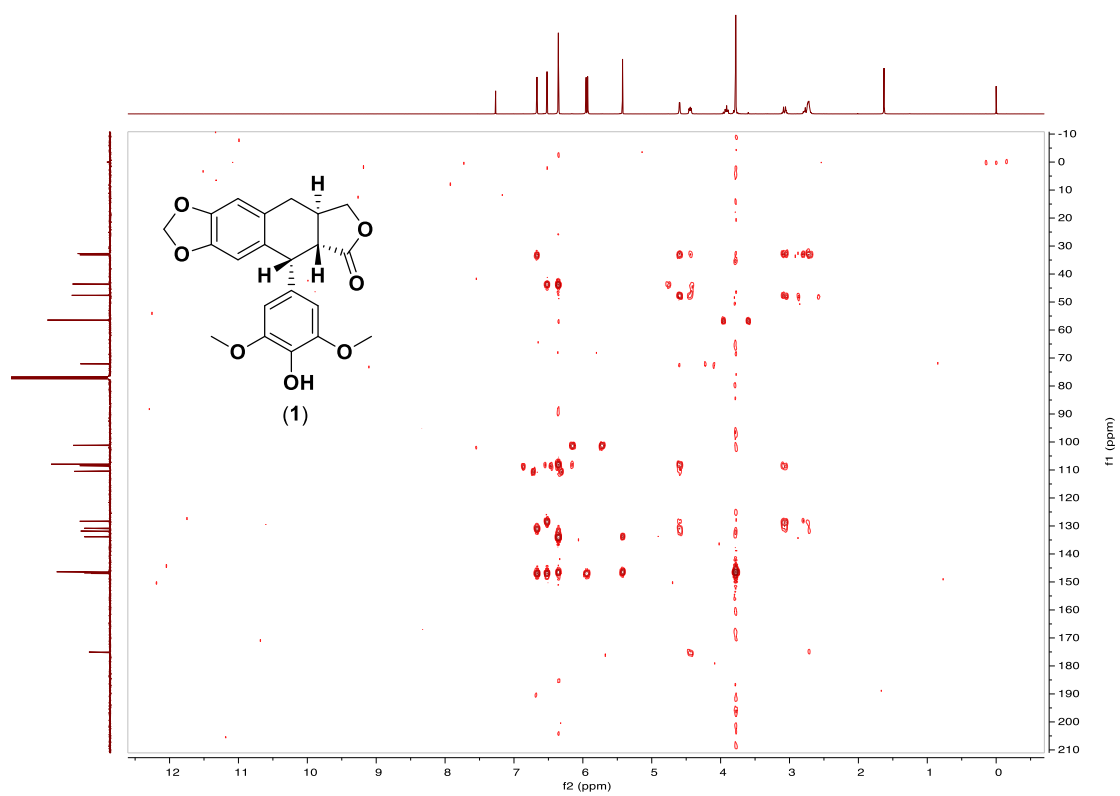


Figure S5. The HMBC NMR spectrum of compound 1

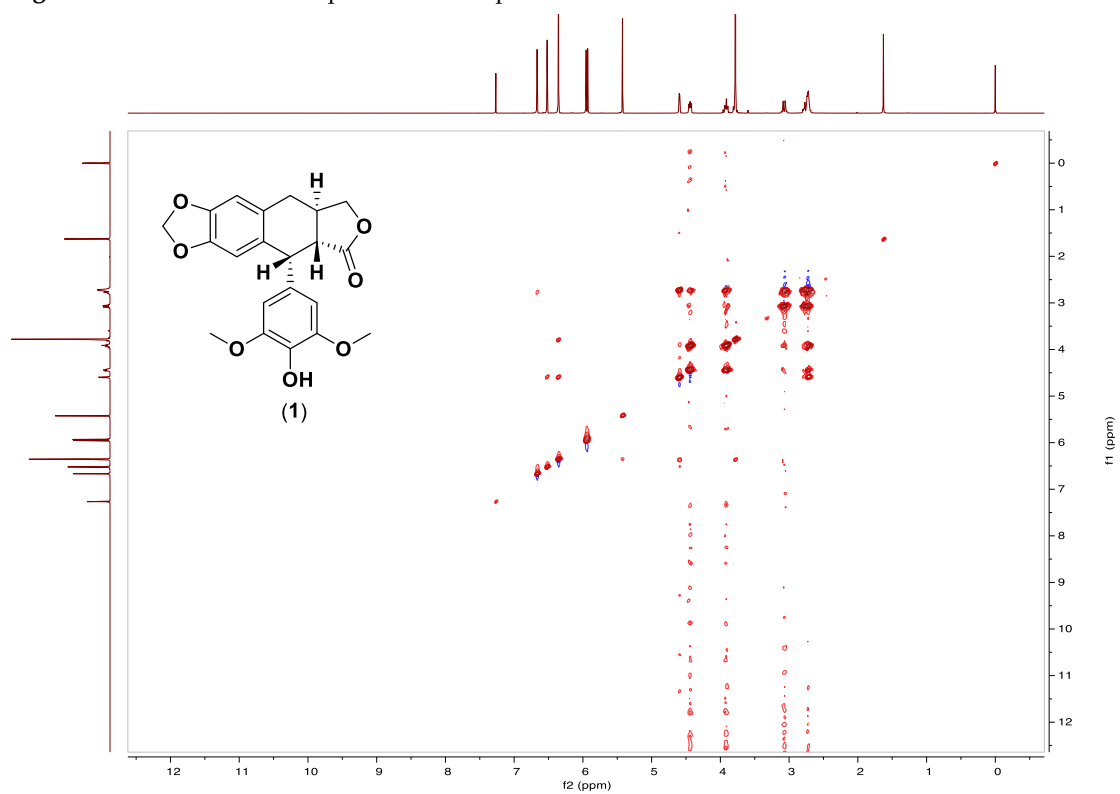


Figure S6. The ^1H - ^1H COSY NMR spectrum of compound 1

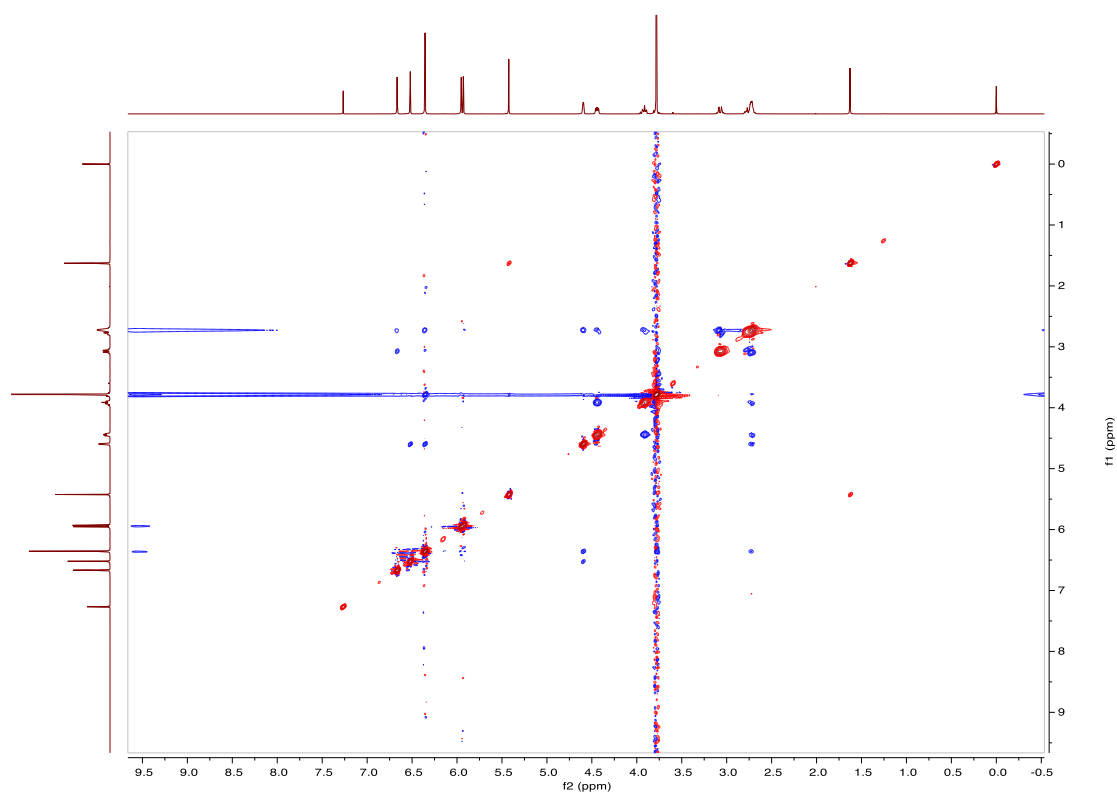


Figure S7. The NOESY NMR spectrum of compound **1**

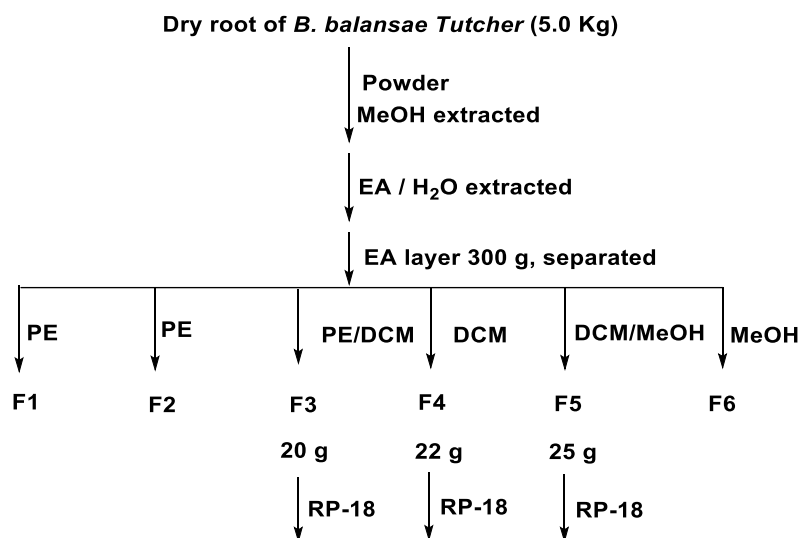


Figure S8. The extraction and fraction flow chart of air-dried root of *B. Balansae*

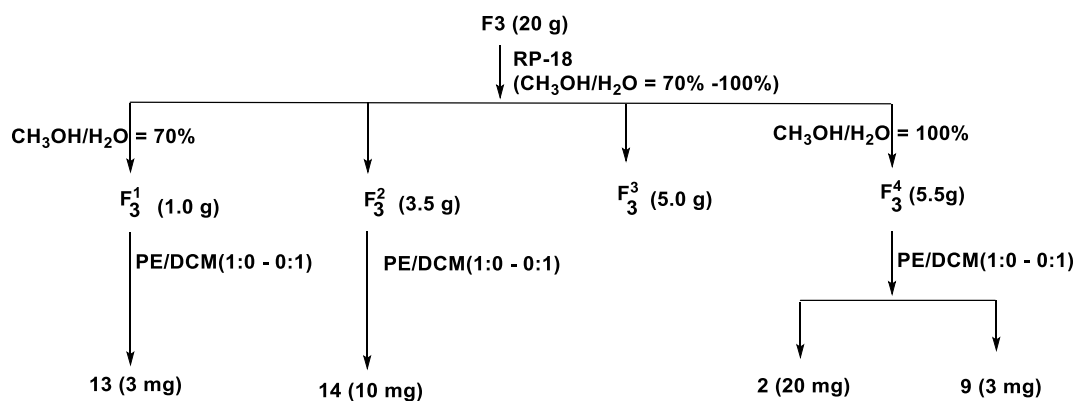


Figure S9. The isolation flow chart of sub fraction F3

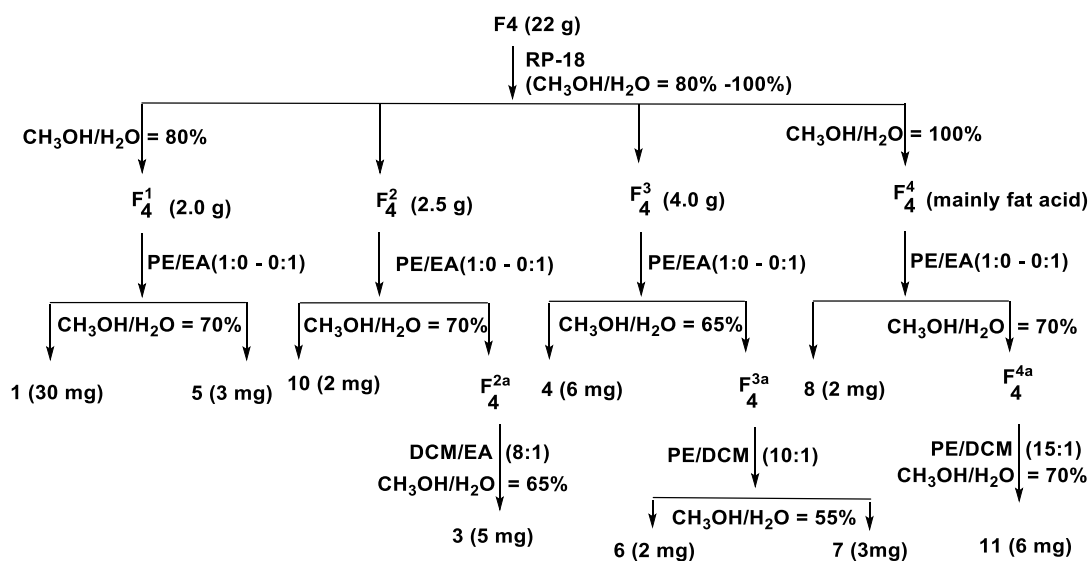


Figure S10. The isolation flow chart of sub fraction F4

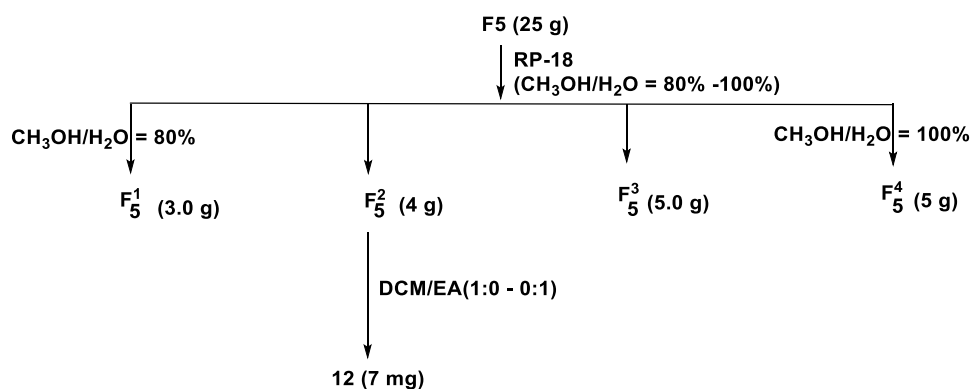


Figure S11. The isolation flow chart of sub fraction F5