

Supplementary Information

Enhanced Photocatalytic Coupling of Benzylamine to N-Benzylidene Benzylamine over the Organic-Inorganic Composites F70-TiO₂ Based on Fullerenes Derivatives and TiO₂

Yanmeng Guo¹, Hang Li¹, Derui Kong, Bo Li¹, Xin Zhong¹, Yi-Fan Chen^{1,*}, Yujie Song^{1,*}

¹Hainan Provincial Key Laboratory of Fine Chemicals, College of Chemical Engineering and Technology, Hainan University, Haikou, China

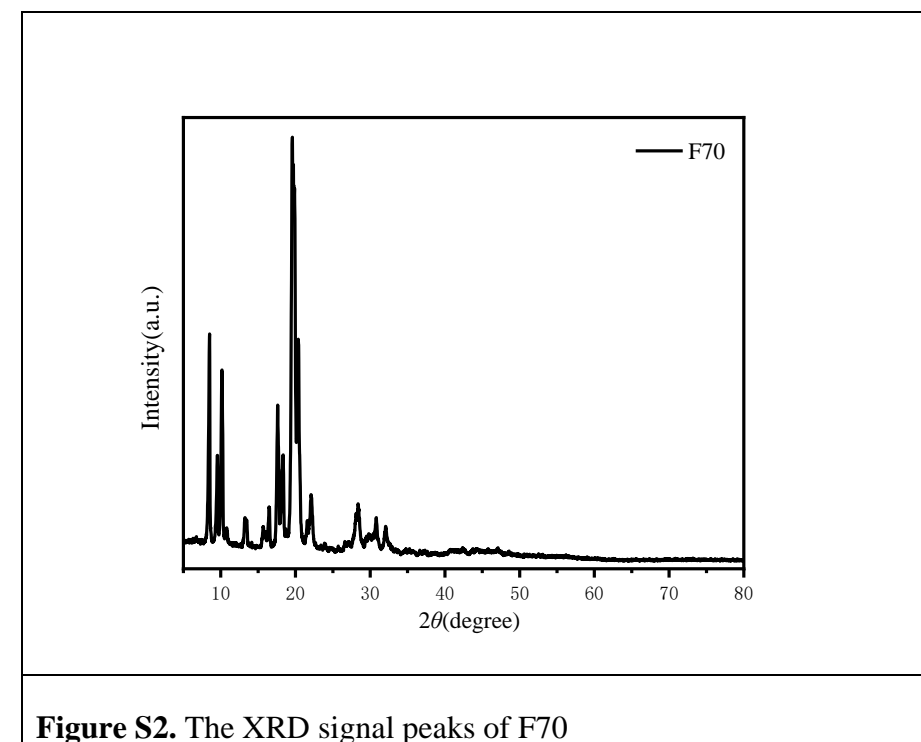
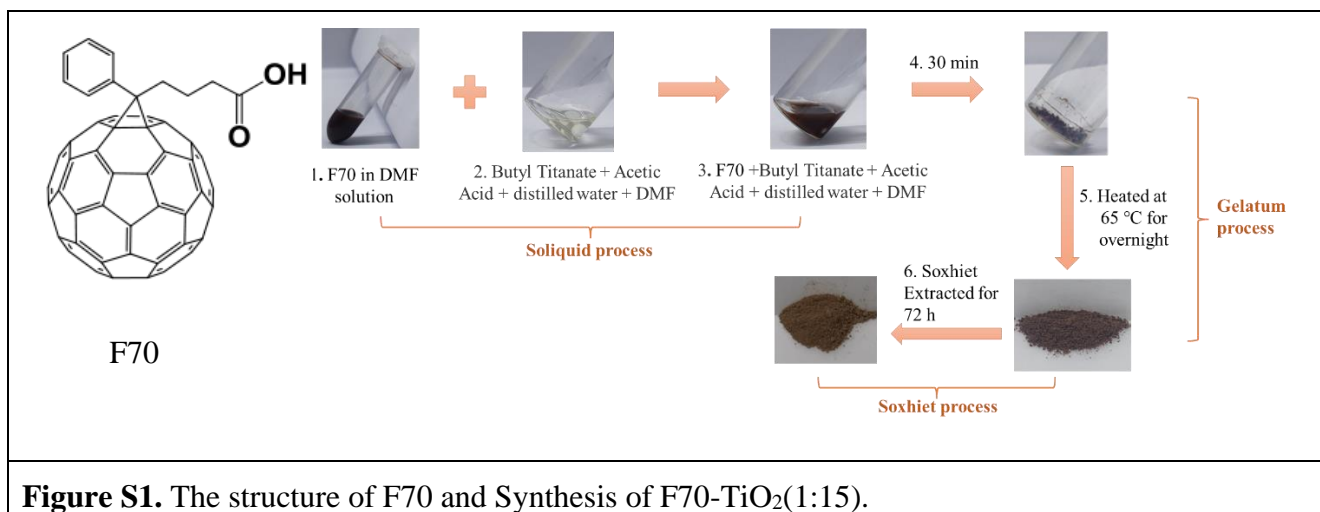
*** Correspondence:**

Yi-Fan Chen

chenyifan@hainanu.edu.cn

Yujie Song

songyuejie@hainanu.edu.cn



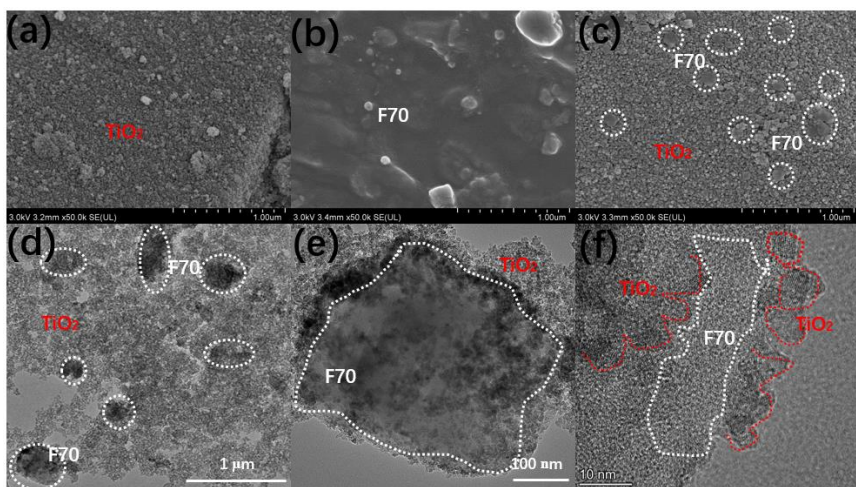


Figure S3. (a) SEM of *f*-TiO₂, (b) SEM of F70, (c) SEM, (d) TEM, and (e) HRTEM of F70-TiO₂(1:15).

Table S1. The BET surface area and the pore size distributions of *f*-TiO₂ and F70-TiO₂(1:15).

Sample	BET Surface area (m ² /g)	Pore size (nm)	Pore volume (cm ³ /(g))
F70-TiO ₂ (1:15)	178.8	4.452	0.2380
<i>f</i> -TiO ₂	198.6	4.386	0.2636

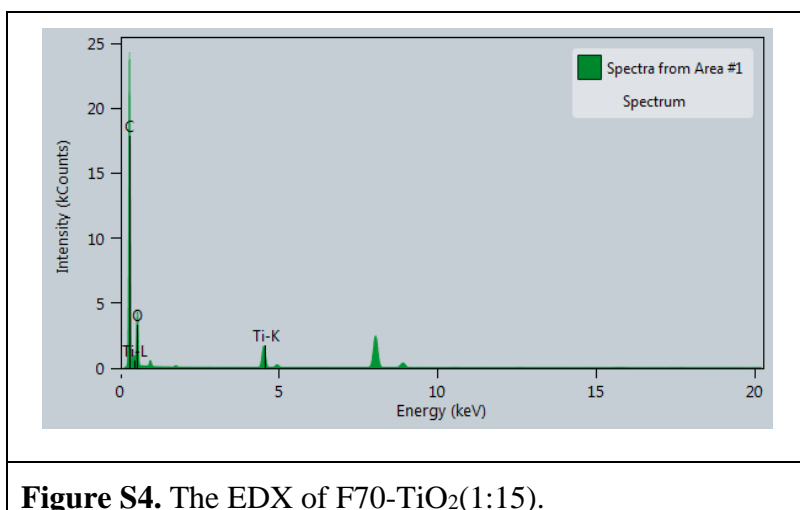


Figure S4. The EDX of F70-TiO₂(1:15).

Table S2. The Atom percentages and the binding energy of *f*-TiO₂ and F70-TiO₂(1:15) by the XPS analysis.

Sample (eV)	Ti2p _{3/2} (eV)	Ti2p _{1/2} (eV)	C1s	O1s
<i>f</i> -TiO ₂	458.6	464.3	284.8 285.8 288.7	529.9 531.2
Atomic %	24.5		23.7	51.8
F70-TiO ₂ (1:15)	458.7	464.5	284.8 285.6 288.9	530.0 531.3
Atomic %	21.7		33.4	44.9

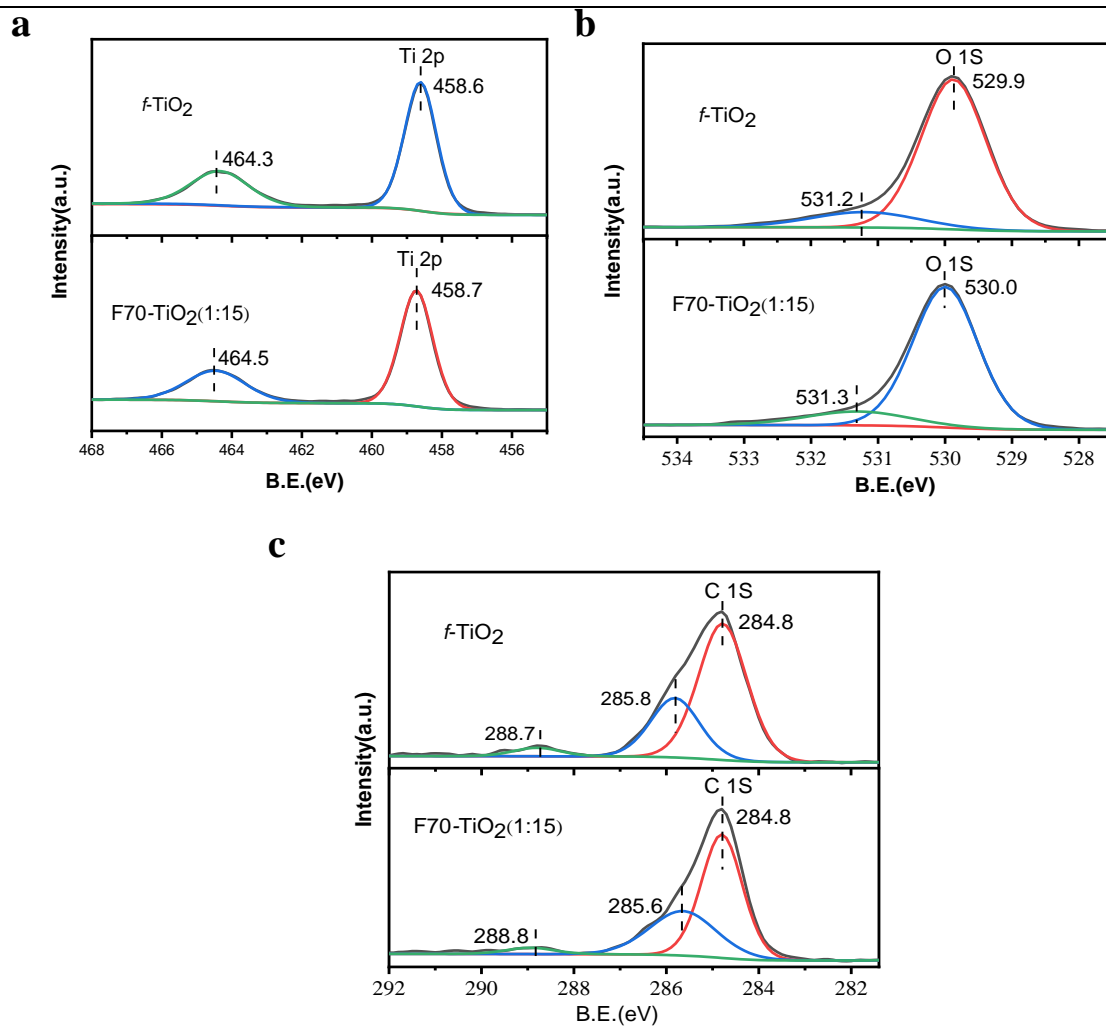


Figure S5. XPS spectra for *f*-TiO₂ and F70-TiO₂ (1:15): **(a)** Ti 2p, **(b)** O 1s and **(c)** C 1s.

