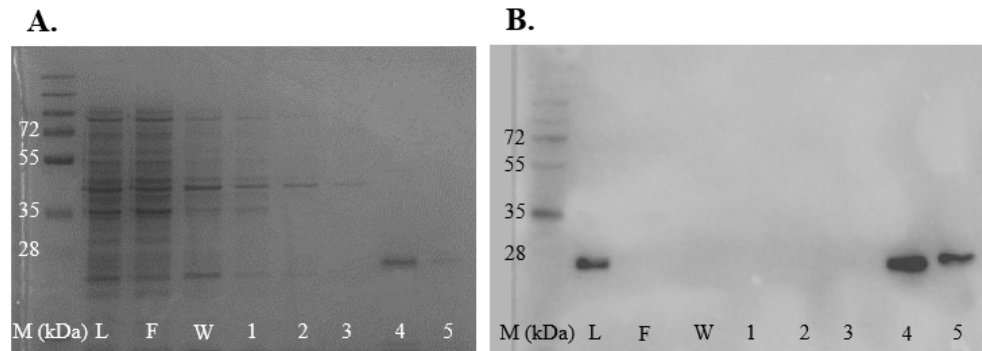


Supplementary Data.



**Figure S1. Purification of Gene\_id\_40363.** Proteins from lysed cells were passed through HisTalon gravity columns and eluted with stepwise concentrations of imidazole. Aliquots of the lysate (L), flow-through (F), wash (W) and elutions (lanes 1-5) were analysed on SDS-PAGE (A) and western blot (B). Elution fractions 1-5 represents 20%, 40%, 60%,80 % and 90% of a 150 mM imidazole elution buffer (50 mM sodium phosphate, 150 mM NaCl) respectively.

Method file	D:\MassHunter\GCMS\1\methods\Henry 50-290, 15min, 150C inlet 10 spilt.M			
Tune file	ATUNE.U			
Ion source	EI			
Source temperature (°C)	230			
Quad temperature (°C)	150			
Fixed Electron energy (eV)	70.0			
Acquisition Type	Scan			
Stop time (min)	10.00			
Solvent delay (min)	2.00			
Trace Ion Detection	False			
Gain Factor	1			
EM Saver	False			
EM Saver Limit	N/A			

Scan Time Segments				
Time	Start Mass	End Mass	Threshold	Scan Speed
2.00	40	200	150	1,562 [N=2]

**Figure S2. MS Parameter Report.**