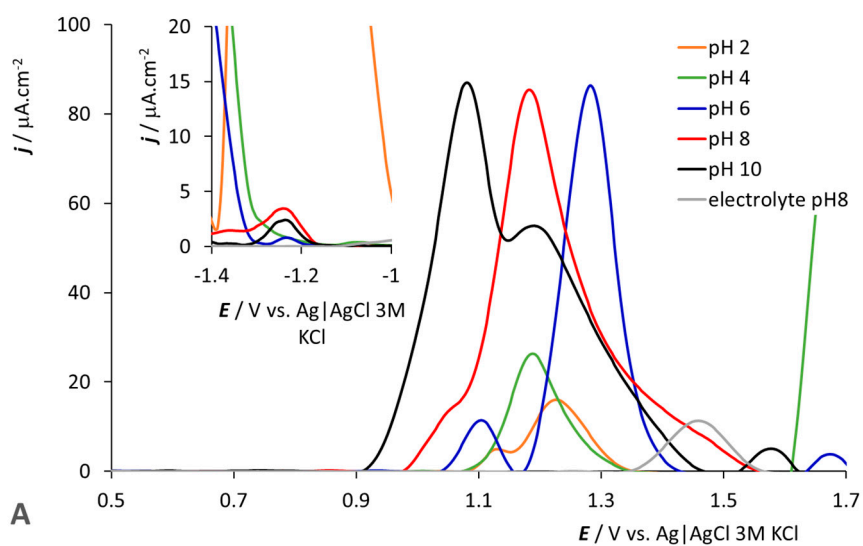
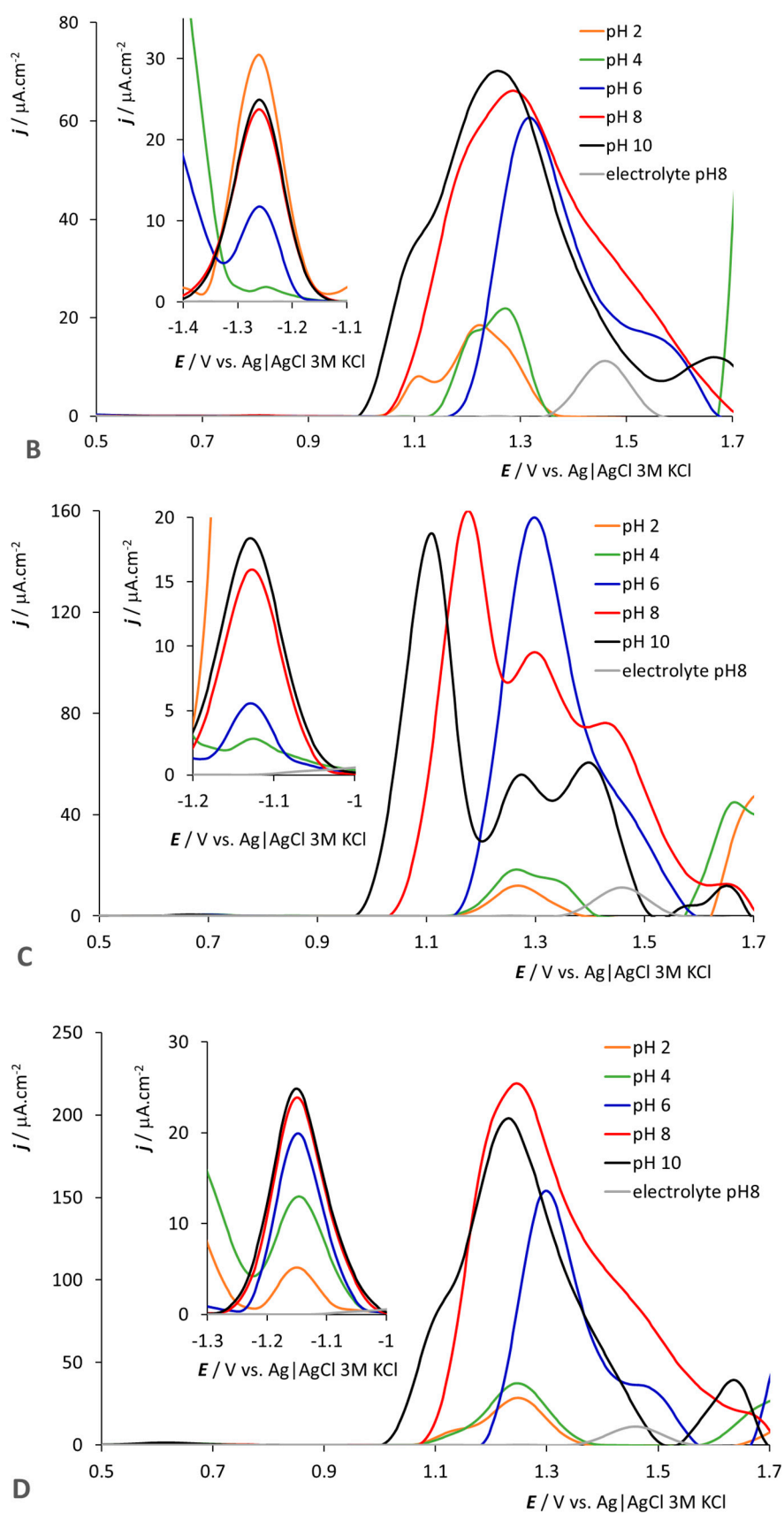
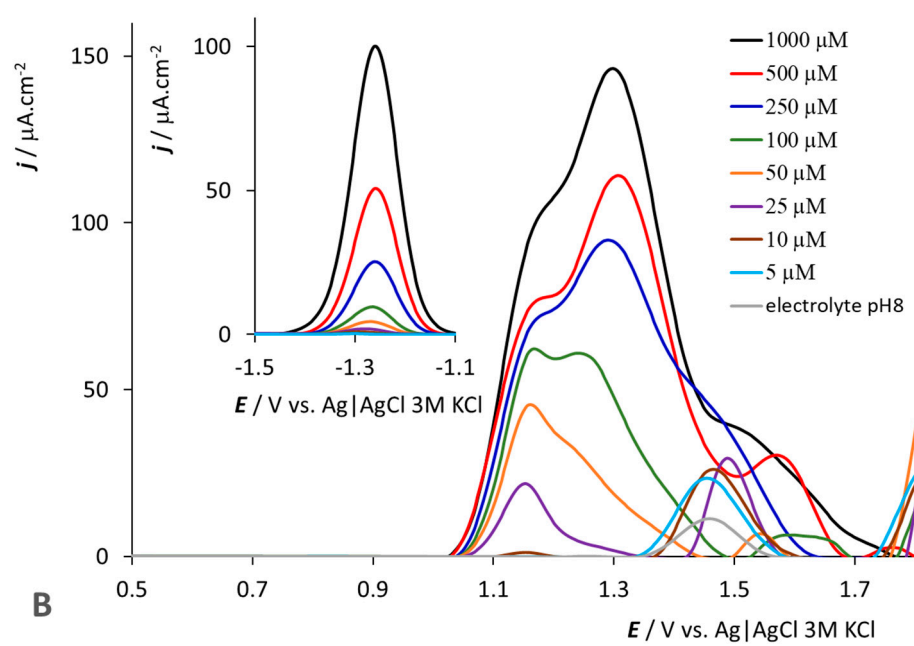
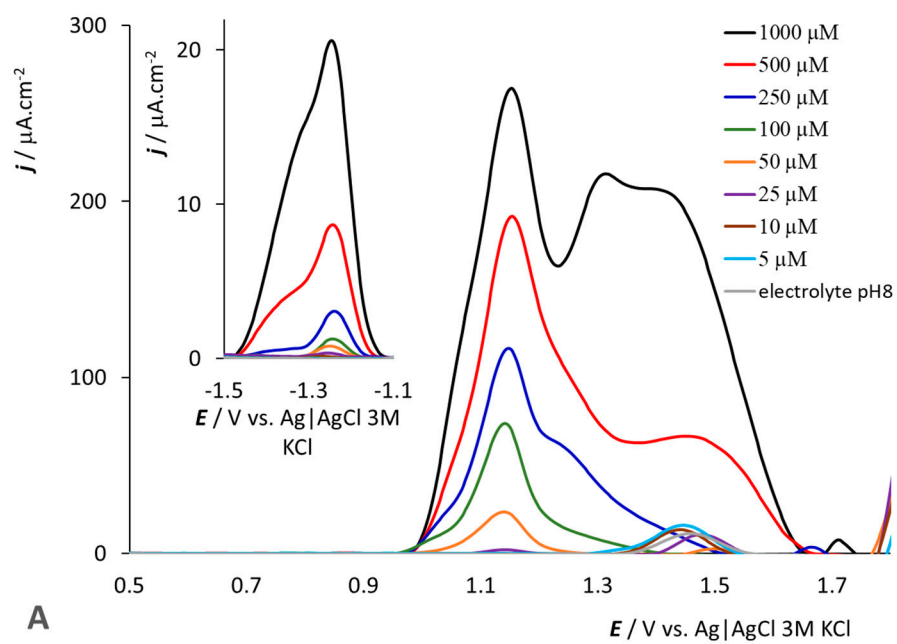


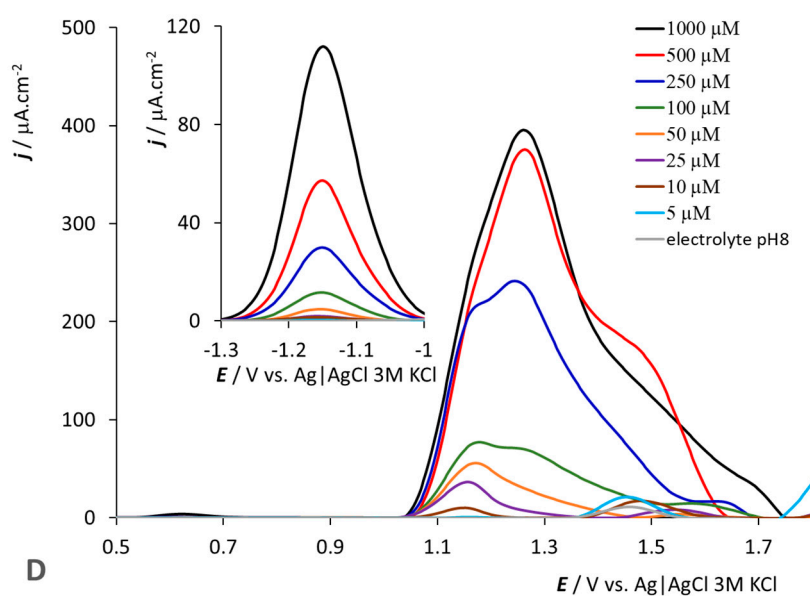
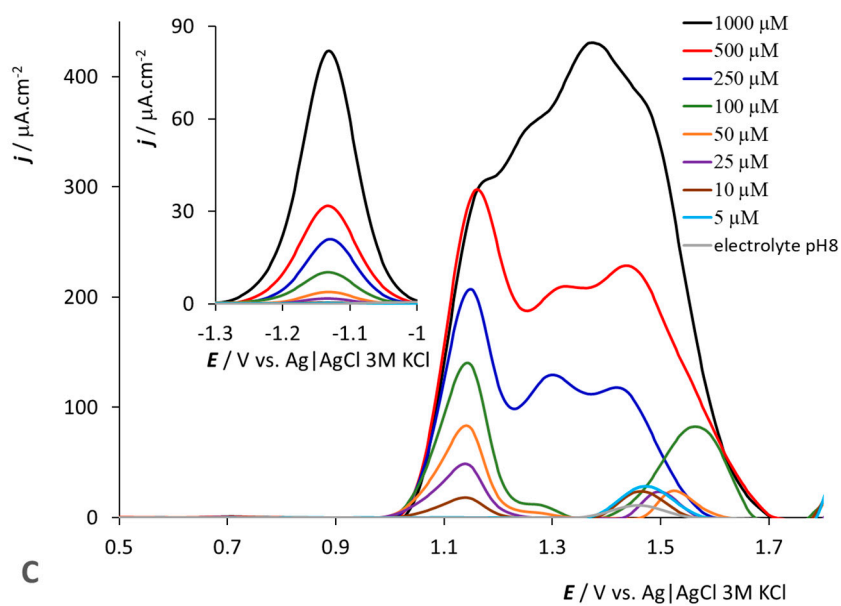
**Figure S1.** Cyclic voltammogram of *HOC2H5-COSAN* (A); *HOC3H7-COSAN* (B); *(HOCH2)2-COSAN* (C) and *(HOC2H5)2-COSAN* (D) in PB, 1000 M concentration, GCE, pH = 8, scan rate = 100 mV.s<sup>-1</sup>.





**Figure S2.** pH dependencies of *HOC2H5*-COSAN (A); *HOC3H7*-COSAN (B); (*HOCH2*)<sub>2</sub>-COSAN (C) and (*HOC2H5*)<sub>2</sub>-COSAN (D) for 200 M concentration, GCE. See caption in the panel for pH identification.





**Figure S3.** Concentration dependencies of  $\text{HOC}_2\text{H}_5\text{-COSAN}$  (A);  $\text{HOC}_3\text{H}_7\text{-COSAN}$  (B);  $(\text{HOCH}_2)_2\text{-COSAN}$  (C) and  $(\text{HOC}_2\text{H}_5)_2\text{-COSAN}$  (D) at pH 8, GCE. See caption in the panel for concentrations identification.