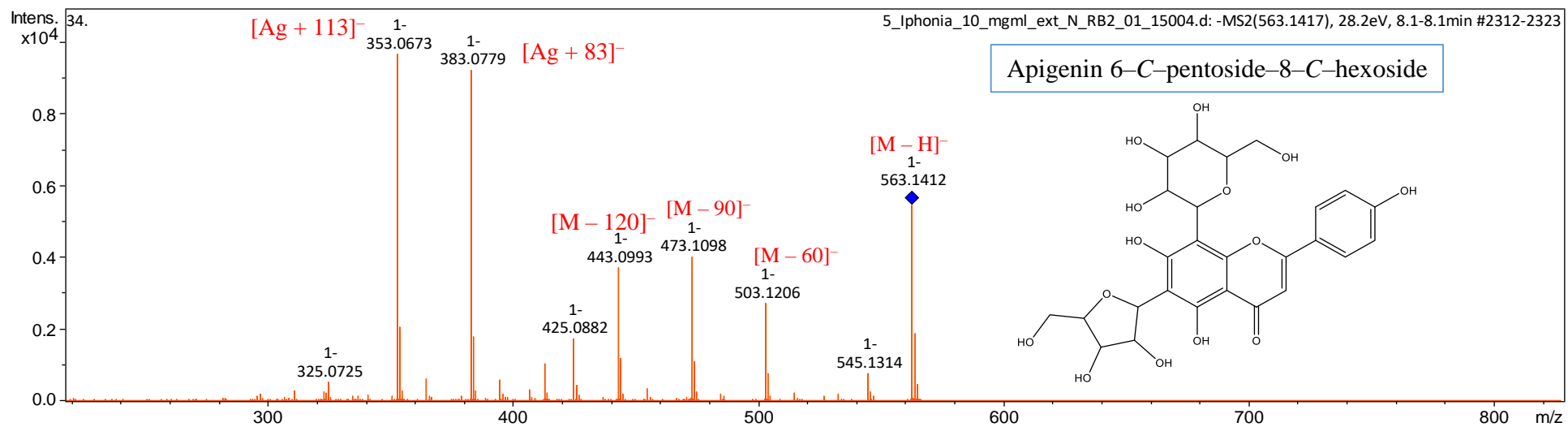
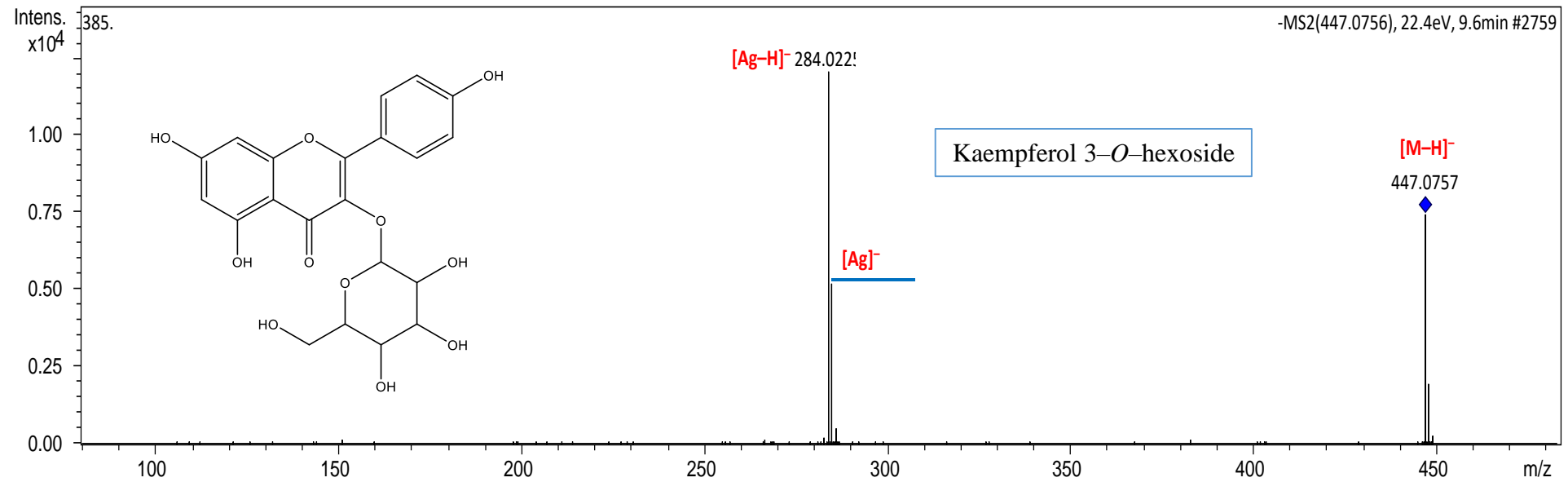


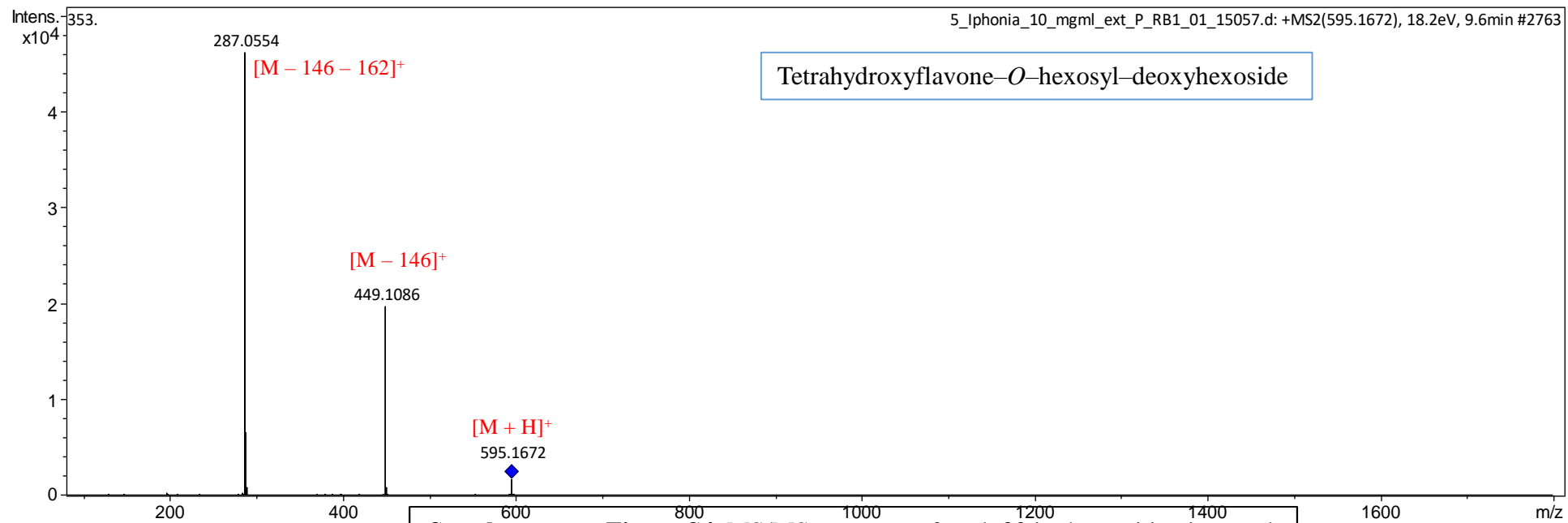
Supplementary Figure S1. MS/MS spectrum of peak 13 in the negative ion mode



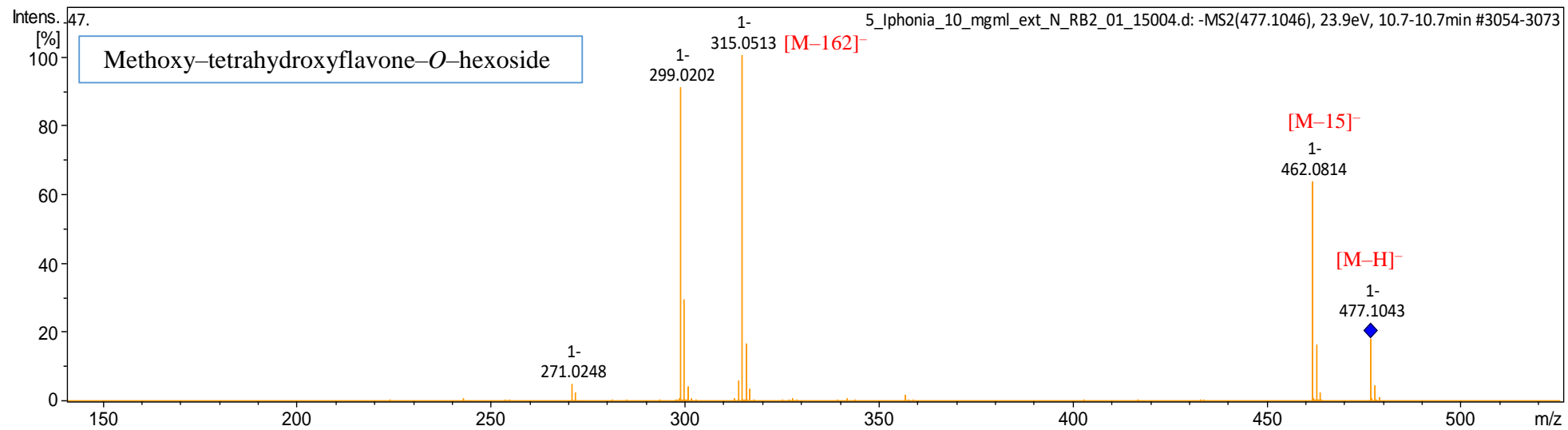
Supplementary Figure S2. MS/MS spectrum of peak 15 in the negative ion mode



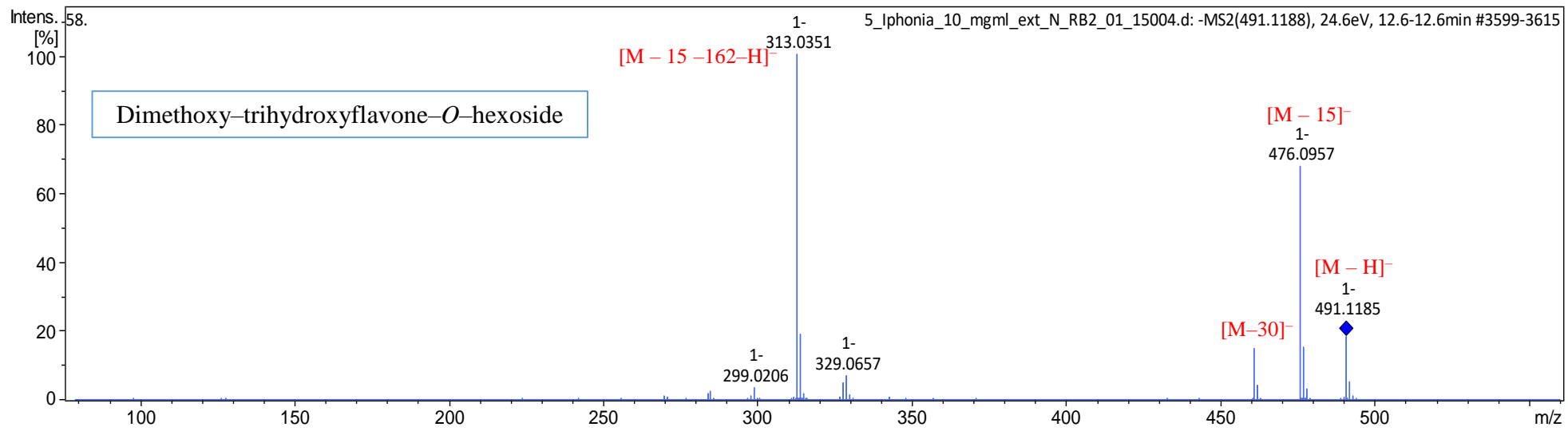
**Supplementary Figure S3.** MS/MS spectrum of peak **19** in the negative ion mode



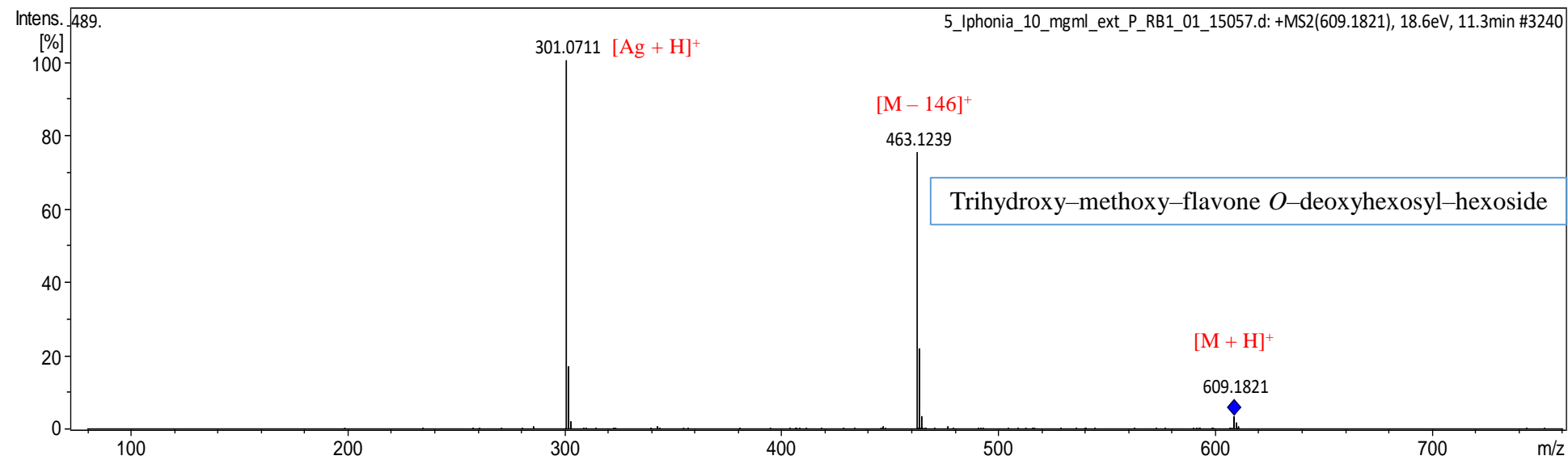
**Supplementary Figure S4.** MS/MS spectrum of peak **20** in the positive ion mode



Supplementary Figure S5. MS/MS spectrum of peak **22** in the negative ion mode

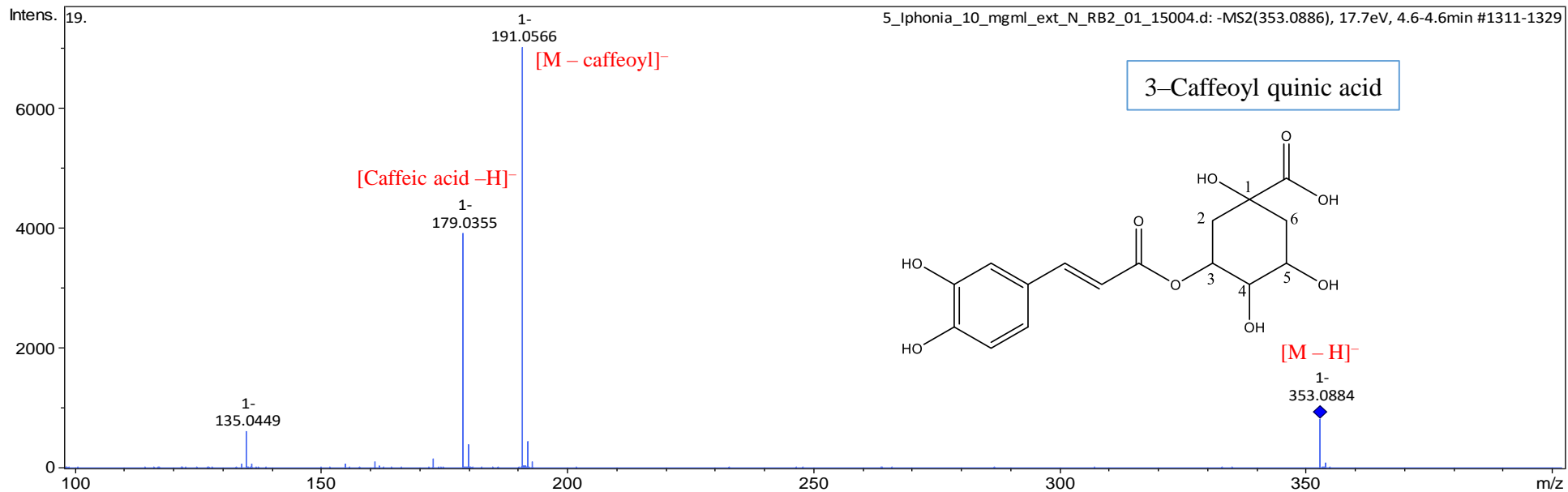


Supplementary Figure S6. MS/MS spectrum of peak **30** in the negative ion mode

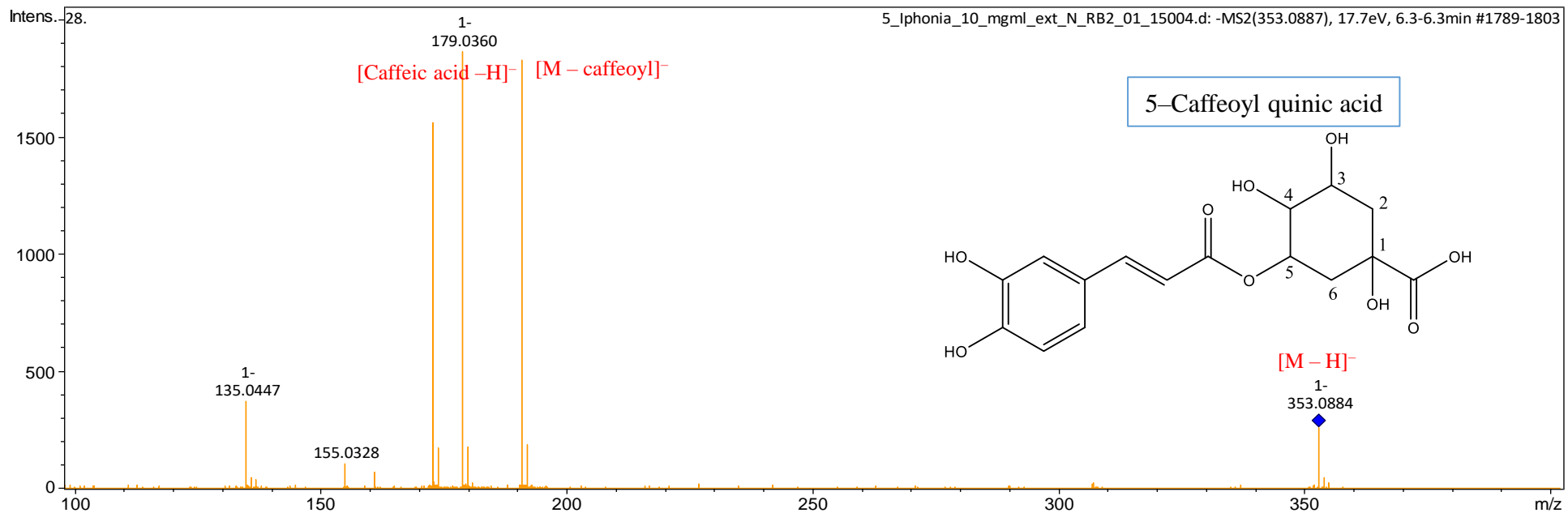


**Supplementary Figure S7.** MS/MS spectrum of peak **24** in the positive ion mode

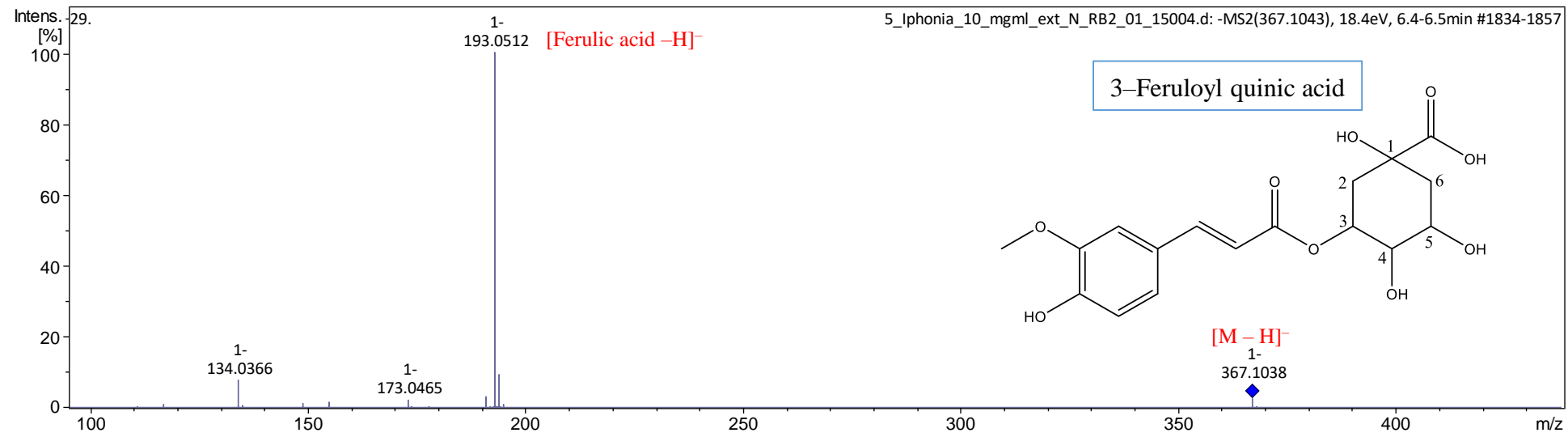
# Hydroxycinnamic acids



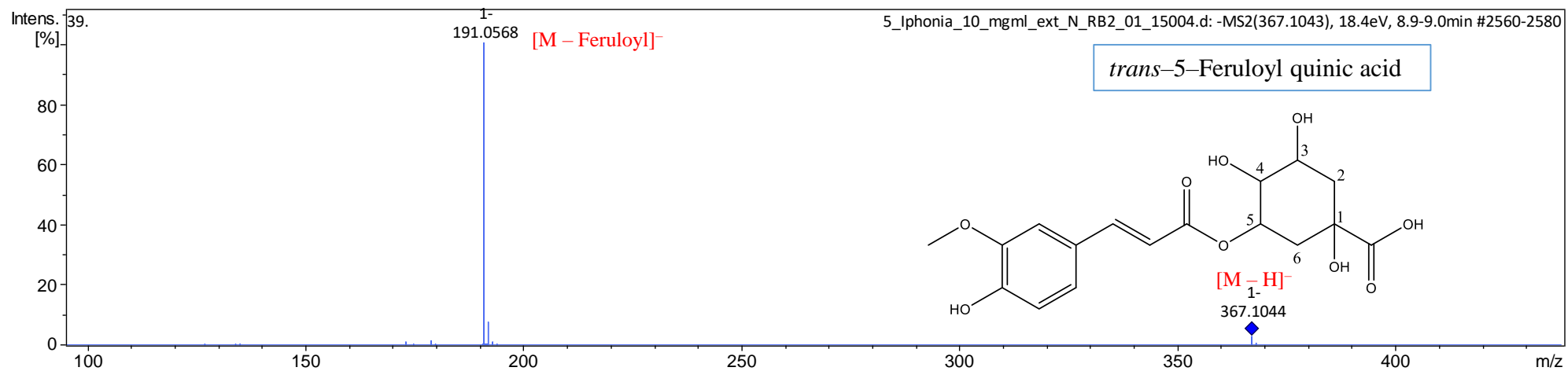
Supplementary Figure S8. MS/MS spectrum of peak 6 in the negative ion mode



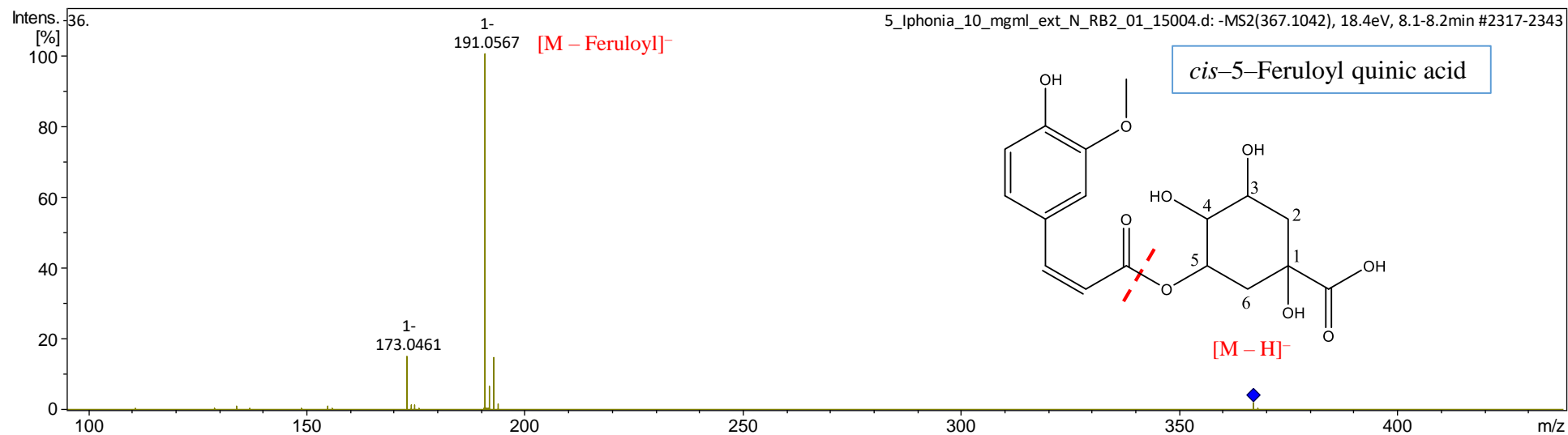
Supplementary Figure S9. MS/MS spectrum of peak 9 in the negative ion mode



**Supplementary Figure S10.** MS/MS spectrum of peak **10** in the negative ion mode



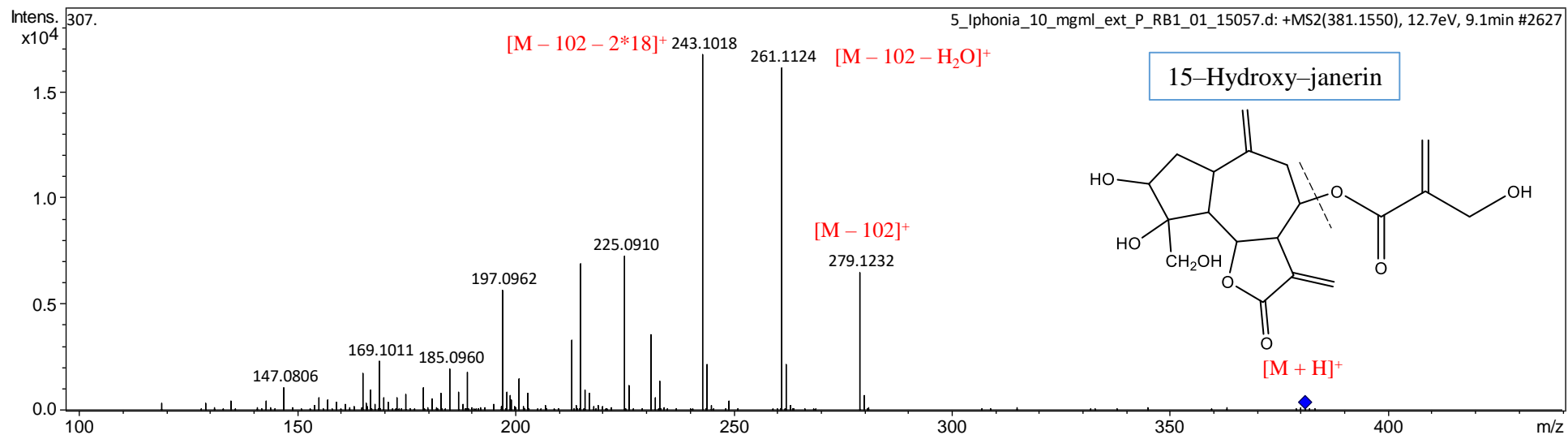
Supplementary Figure S11. MS/MS spectrum of peak **14** in the negative ion mode



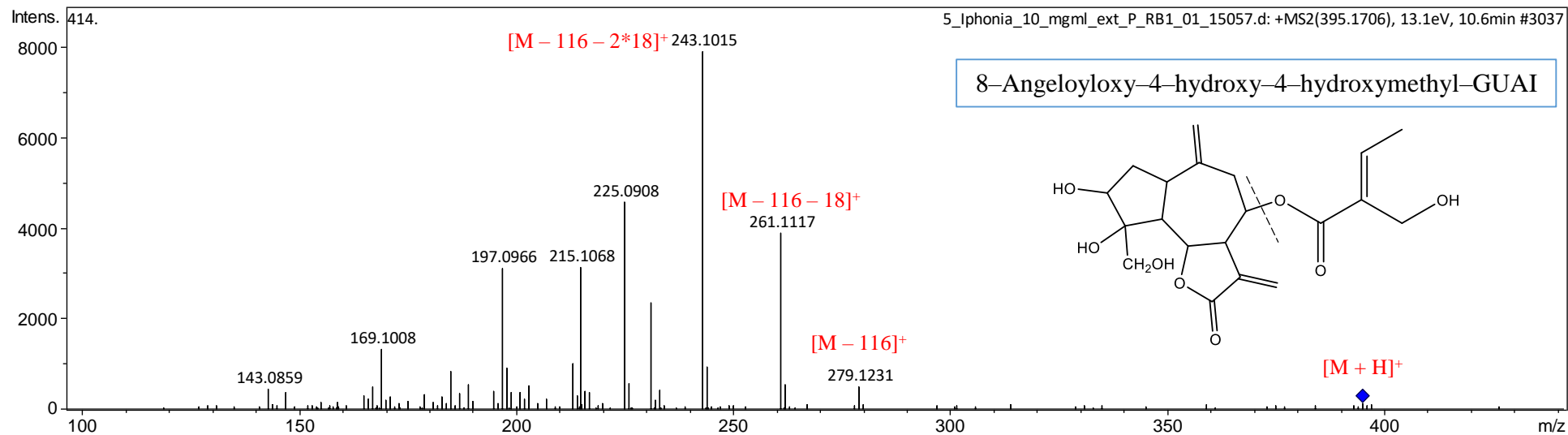
Supplementary Figure S12. MS/MS spectrum of peak **16** in the negative ion mode



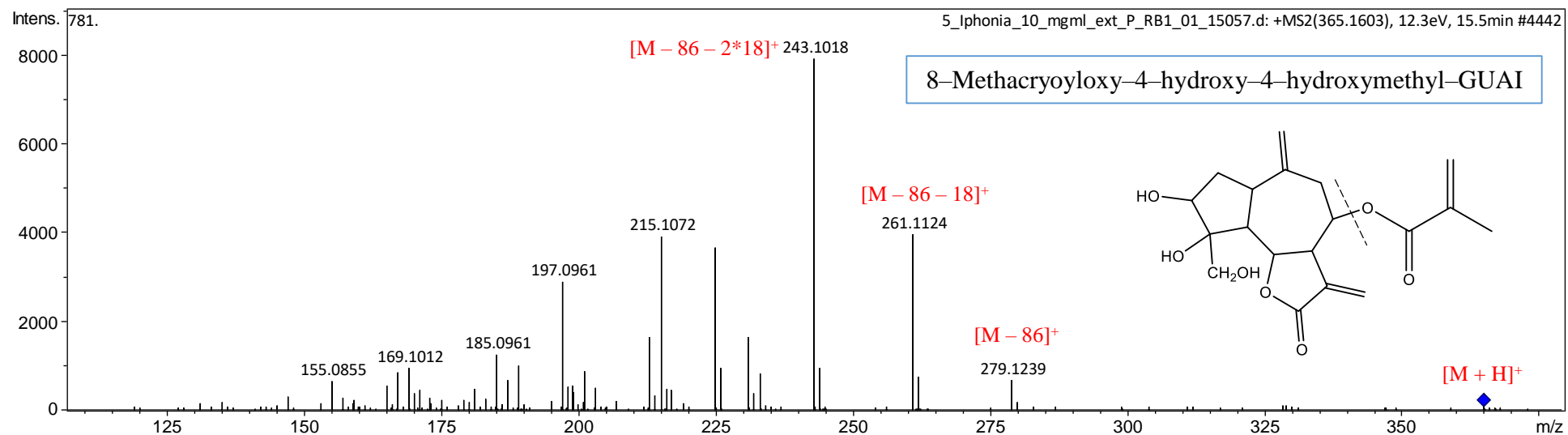
# Sesquiterpene lactones (Guaianolides)



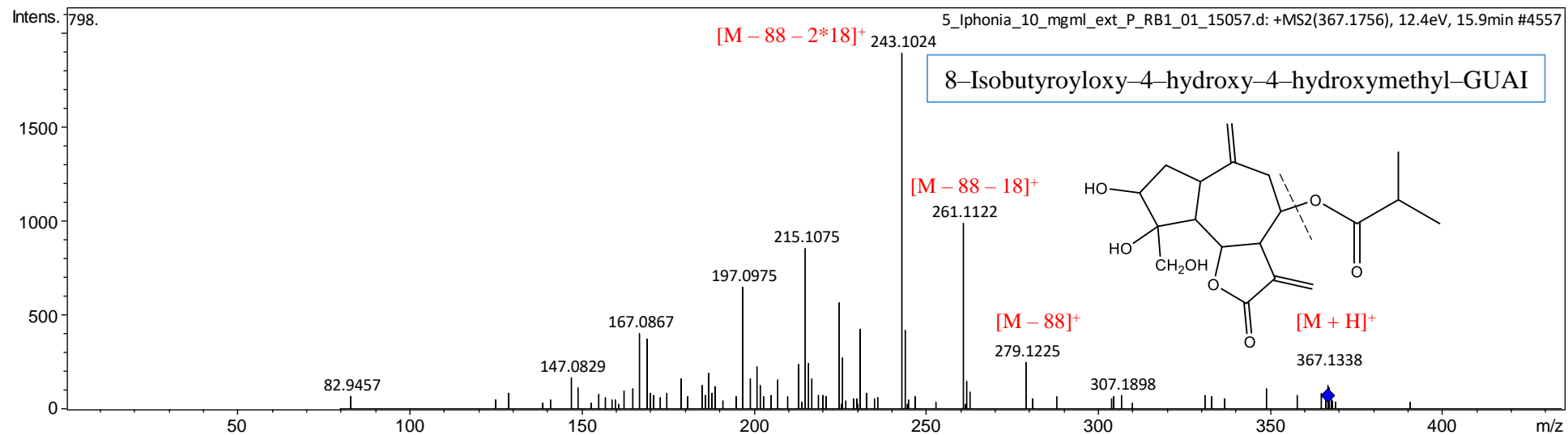
Supplementary Figure S13. MS/MS spectrum of peak 17 in the positive ion mode



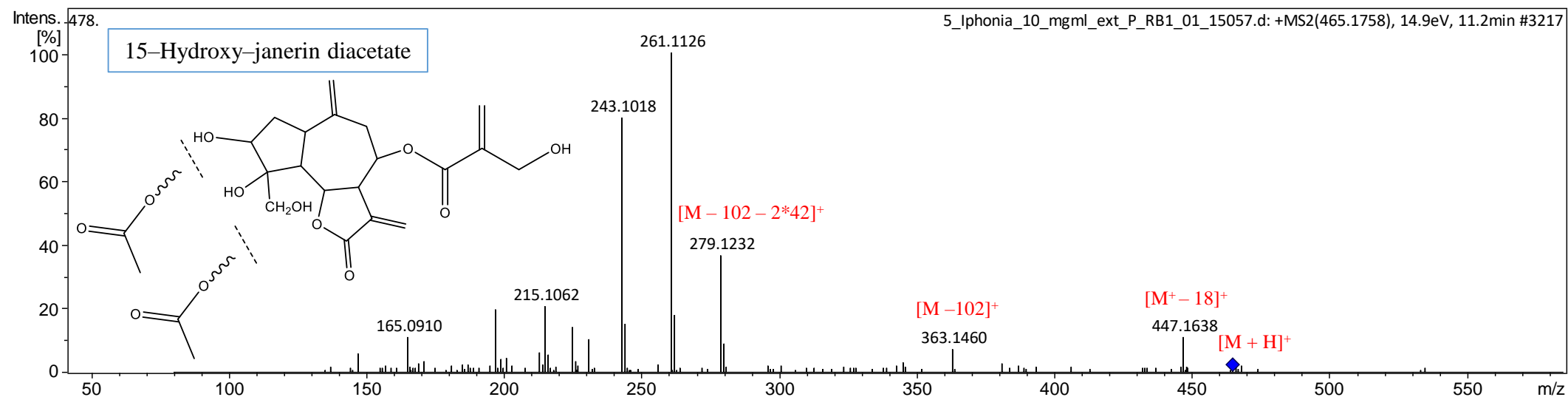
Supplementary Figure S14. MS/MS spectrum of peak 21 in the positive ion mode



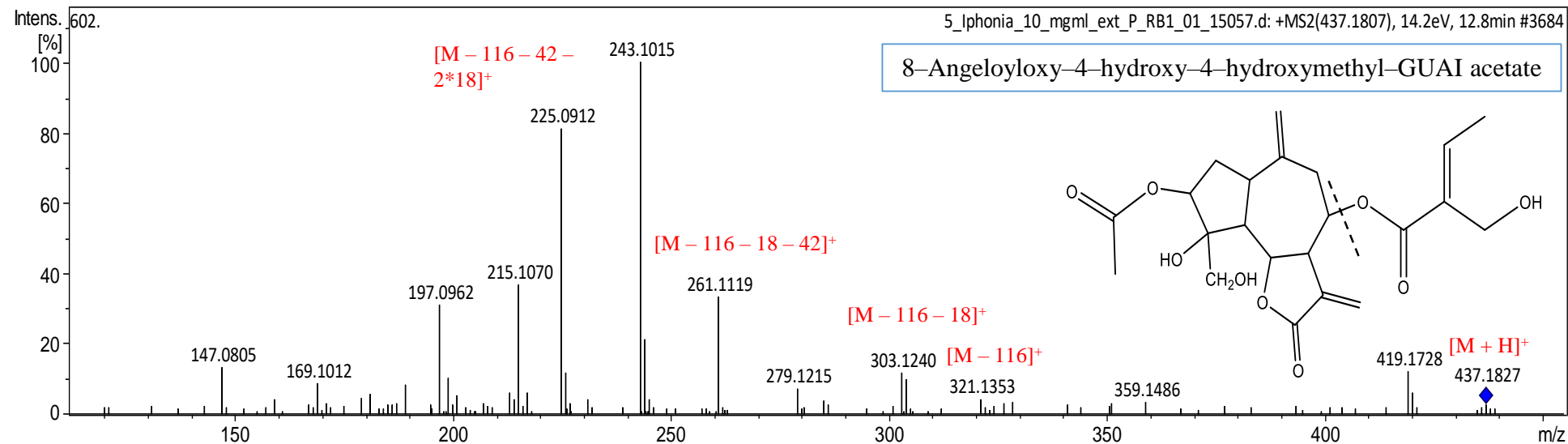
**Supplementary Figure S15.** MS/MS spectrum of peak **38** in the positive ion mode



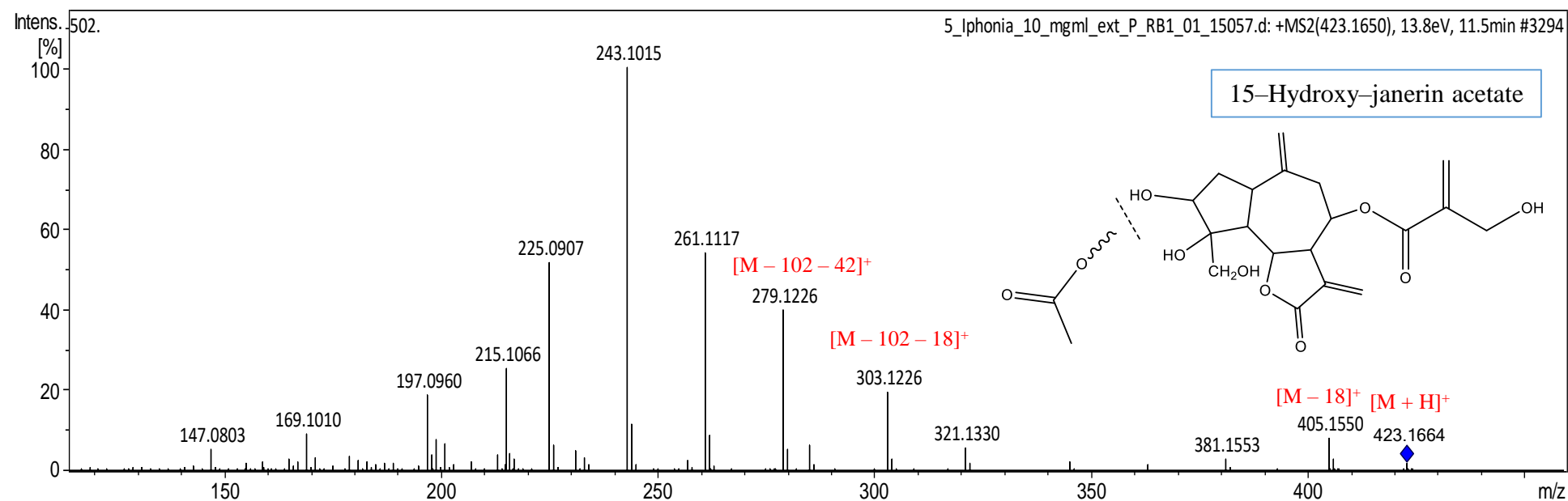
**Supplementary Figure S16.** MS/MS spectrum of peak **39** in the positive ion mode



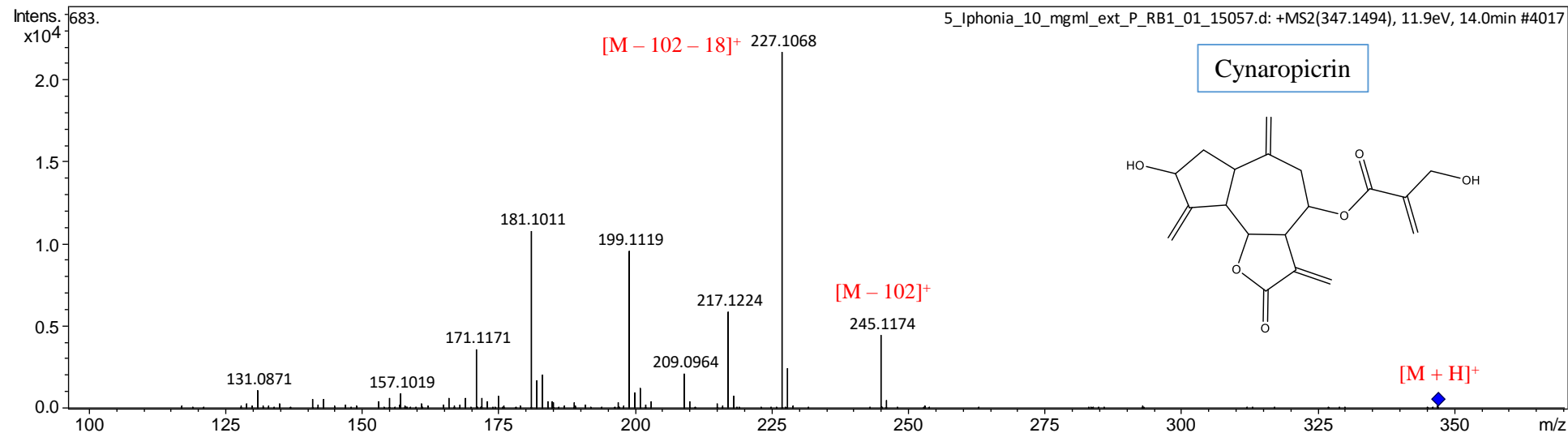
Supplementary Figure S17. MS/MS spectrum of peak **23** in the positive ion mode



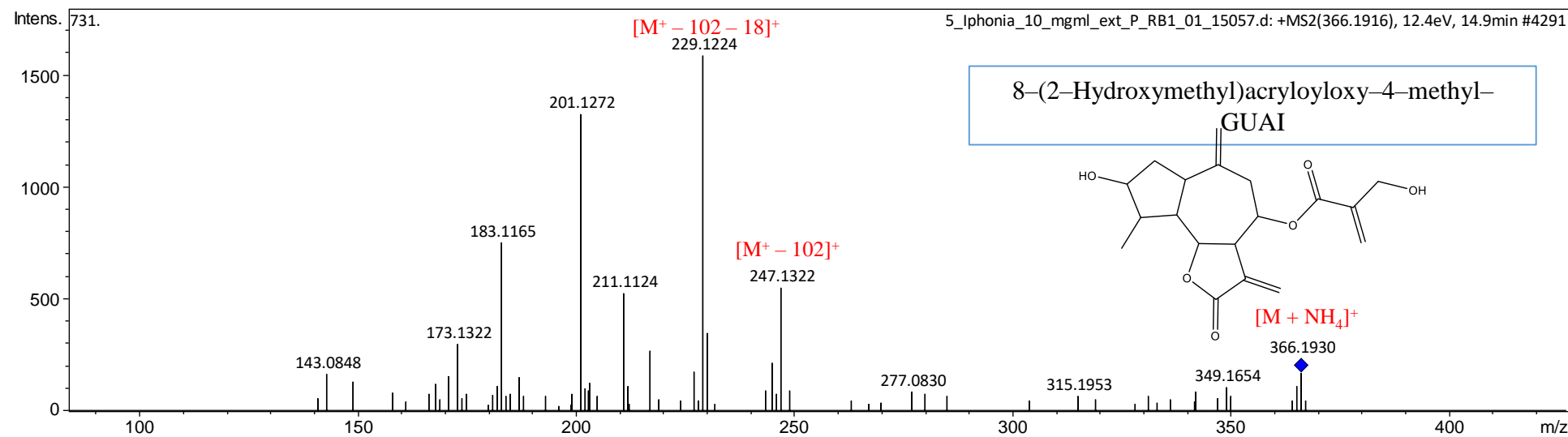
**Supplementary Figure S18.** MS/MS spectrum of peak **31** in the positive ion mode



**Supplementary Figure S19.** MS/MS spectrum of peak **25/27** in the positive ion mode

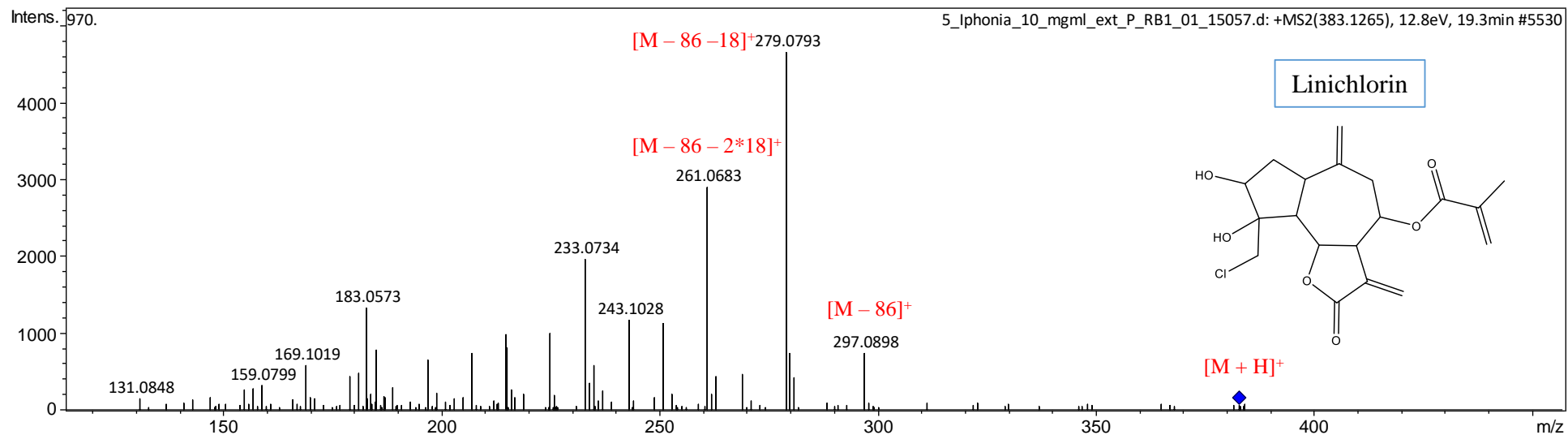


**Supplementary Figure S20.** MS/MS spectrum of peak **34** in the positive ion mode

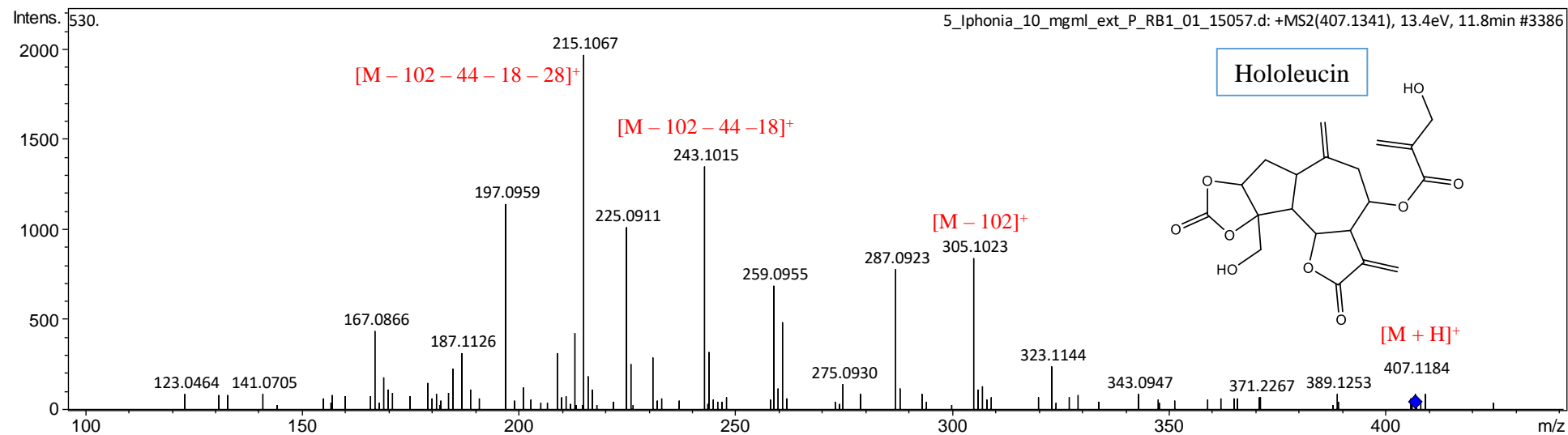


**Supplementary Figure S21.** MS/MS spectrum of peak **35** in the positive ion mode





**Supplementary Figure S24.** MS/MS spectrum of peak **43** in the positive ion mode



**Supplementary Figure S25.** MS/MS spectrum of peak **26** in the positive ion mode