

Figure S1. Chromatogram of GC-MS analysis of kiwiberry *cv* Geneva (the untreated sample- blue and HPP-treated 450MPa/5 min- black line). ethyl butanoate; myrcene; (R)-(+)-limonene; hexanal; terpinolene; 6-methyl-5-hepten-2-one; 1-hexanol; benzaldehyde; linalool; (-)-terpinen-4-ol; methyl benzoate; ethyl benzoate

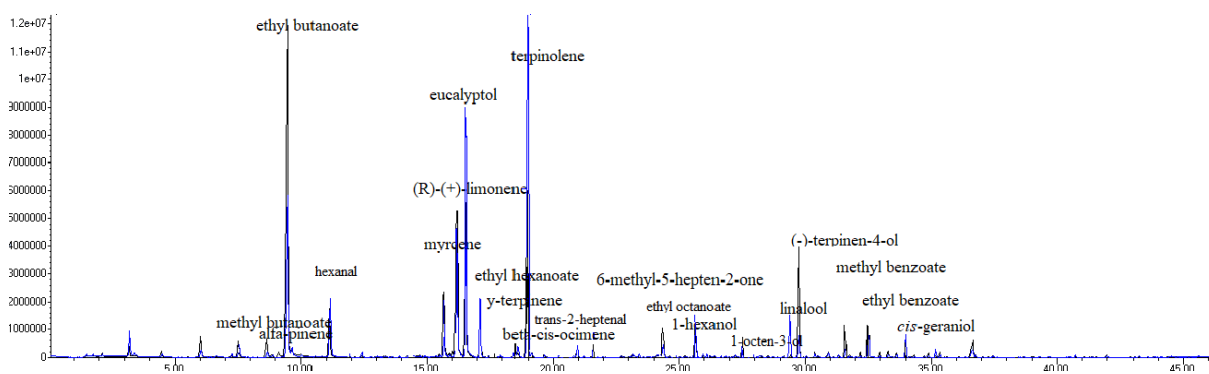


Figure S2. Chromatogram of GC-MS analysis of kiwiberry *cv* Weiki (the untreated sample- blue and HPP-treated 450MPa/5 min- black line). methyl butanoate; α -pinene; ethyl butanoate; hexanal; myrcene; (R)-(+)-limonene; eucalyptol; ethyl hexanoate; γ -terpinene; β -cis-ocimene; terpinolene; *trans*-2-heptenal; 6-methyl-5-hepten-2-one; 1-hexanol; ethyl octanoate; 1-octen-3-ol; linalool; (-)-terpinen-4-ol; methyl benzoate; ethyl benzoate; *cis*-geraniol