

Volatilome and Essential Oil of *Uromoides dermestoides*: A Broad-Spectrum Medical Insect.

Paulina J. Cázares-Samaniego ¹, Claudia G. Castillo ^{1,*}, Miguel A. Ramos-López ² and Marco M. González-Chávez ^{3,*}

- 1 Coordinación para la Innovación de la Ciencia y la Tecnología (CIACYT), Facultad de Medicina, Universidad Autónoma de San Luis Potosí, Sierra Leona #550, Col. Lomas de San Luis, C.P.78210, San Luis Potosí, San Luis Potosí, México; xavet16@gmail.com (P.J.C.-S.), claudia.castillo@uaslp.mx (C.G.C.)
 - 2 Facultad de Química, Universidad Autónoma de Querétaro, Cerro de las Campanas s/n, Col. Las Campanas, C.P. 76010, Santiago de Querétaro, Querétaro, México; miguel.angel.ramos@uaq.mx
 - 3 Facultad de Ciencias Químicas, Centro de Investigación y Estudios de Posgrado, Universidad Autónoma de San Luis Potosí, Dr. Manuel Nava Martínez #6, Zona Universitaria, C.P.78210, San Luis Potosí, San Luis Potosí, México; gcomm@uaslp.mx
- * Correspondence: M.M.G.-C. gcomm@uaslp.mx; Tel.: +52 4448262300 Ext. 2471; C.G.C. claudia.castillo@uaslp.mx Tel.: +52 4448262300 Ext. 8482

SUPPORTING INFORMATION

List of Contents

Figure S1. Gas chromatogram of the HS-SPME (CAR/PDMS fiber) at 1h of <i>U. dermestoides</i> under T1 treatment.	2
Figure S2. Gas chromatogram of the HS-SPME (PEG fiber) at 1h of <i>U. dermestoides</i> under T1 treatment.....	2
Figure S3. Gas chromatogram of the HS- SPME (CAR/PDMS fiber) at 1h of <i>U. dermestoides</i> under T2 stimuli.	2
Figure S4. Gas chromatogram of the HS- SPME (PEG fiber) at 1h of <i>U. dermestoides</i> under T2 stimuli.	3
Figure S5. Gas chromatogram of <i>U. dermestoides</i> essential oil under T1 stimuli (EOT1)...	3
Figure S6. Gas chromatogram of <i>U. dermestoides</i> essential oil under T2 stimuli (EOT2)...	3

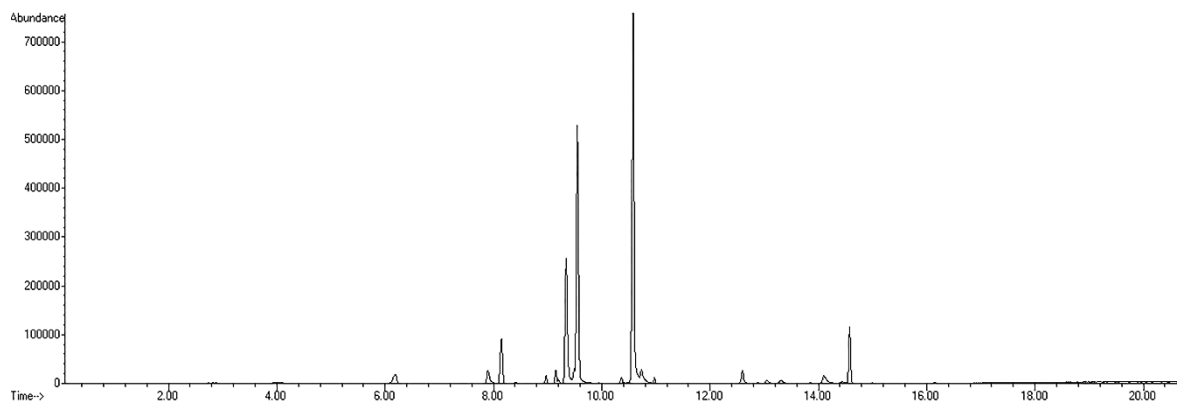


Figure S1. Gas chromatogram of the HS-SPME (CAR/PDMS fiber) at 1h of *U. dermestoides* under T1 treatment.

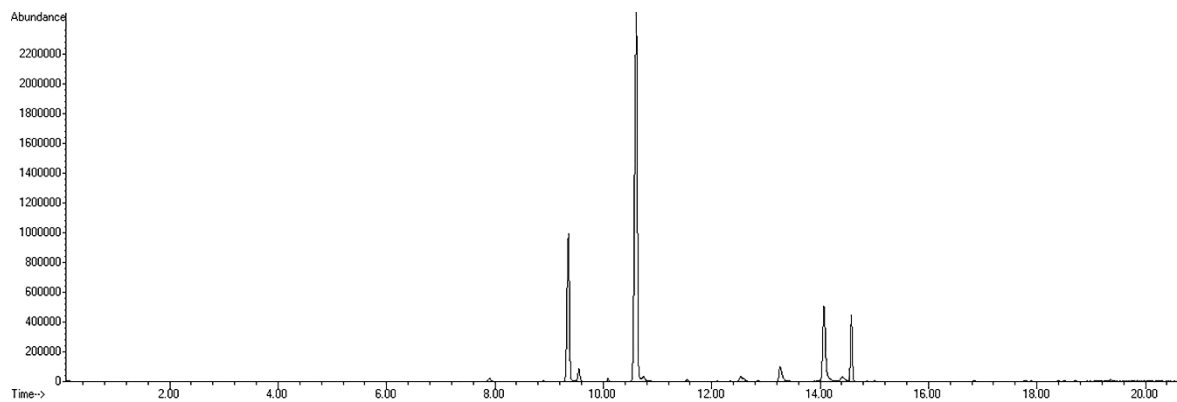


Figure S2. Gas chromatogram of the HS-SPME (PEG fiber) at 1h of *U. dermestoides* under T1 treatment.

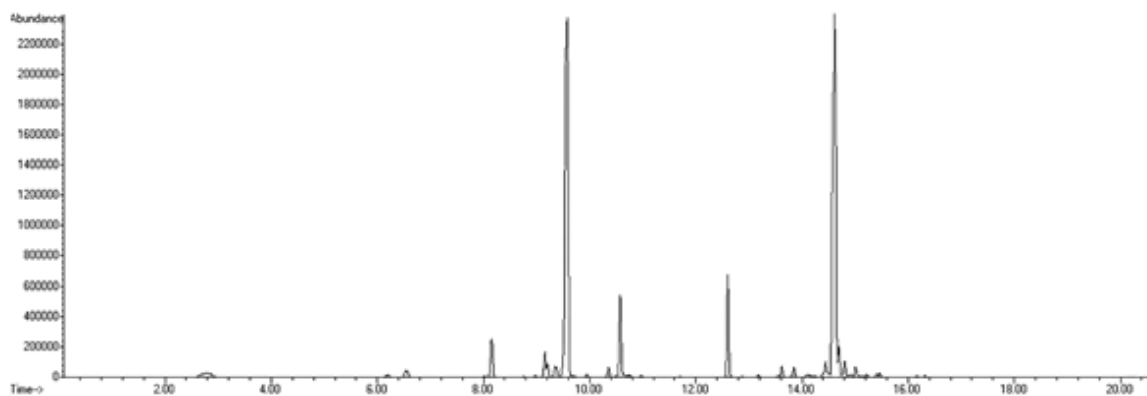


Figure S3. Gas chromatogram of the HS- SPME (CAR/PDMS fiber) at 1h of *U. dermestoides* under T2 stimuli.

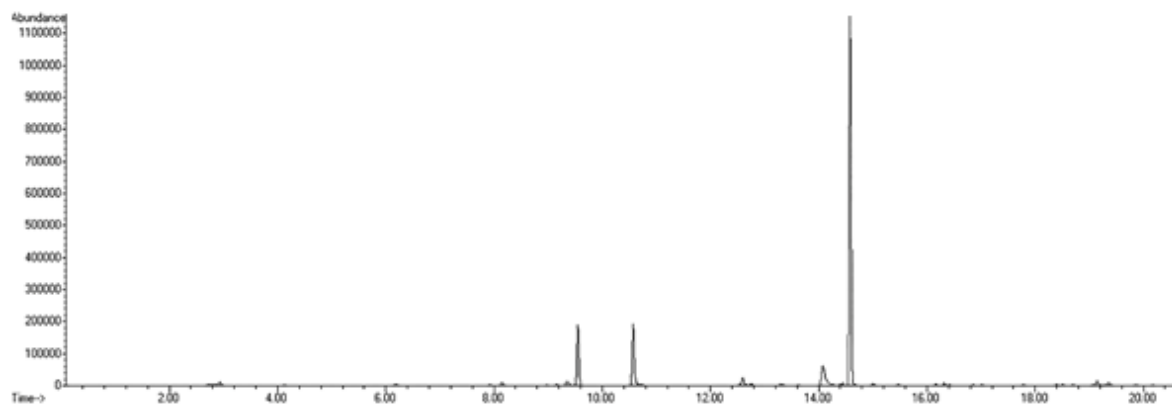


Figure S4. Gas chromatogram of the HS- SPME (PEG fiber) at 1h of *U. dermestoides* under T2 stimuli.

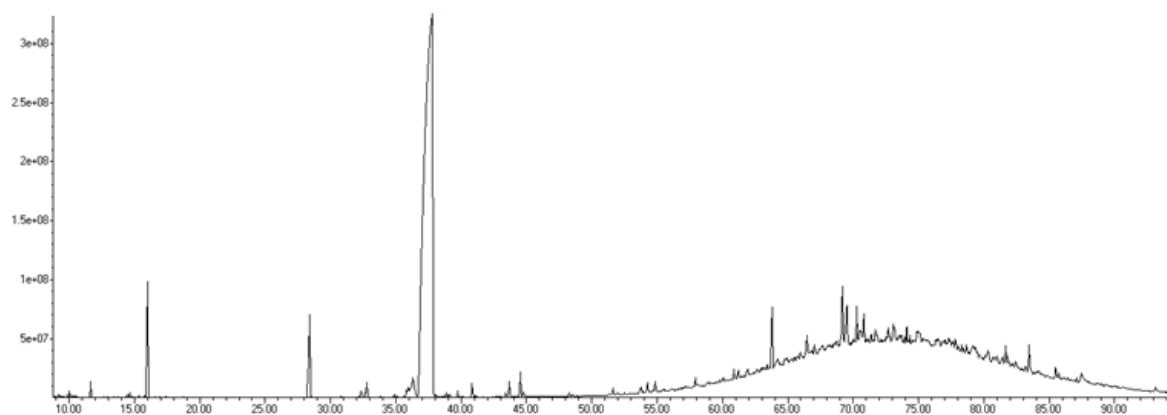


Figure S5. Gas chromatogram of *U. dermestoides* essential oil under T1 stimuli (EOT1).

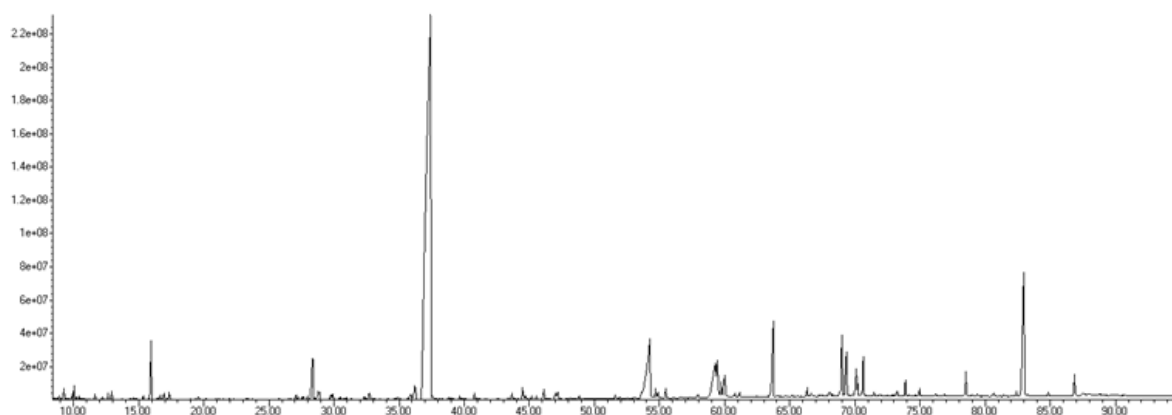


Figure S6. Gas chromatogram of *U. dermestoides* essential oil under T2 stimuli (EOT2).