

Supporting Information

Fluorimetric Method for the Determination of Histidine in Random Human Urine Based on Zone Fluidics

Antonios Alevridis ¹, Apostolia Tsiasioti ¹, Constantinos K. Zacharis ² and Paraskevas D. Tzanavaras ^{1,*}

¹ Laboratory of Analytical Chemistry, School of Chemistry, Faculty of Sciences, Aristotle University of Thessaloniki, GR-54124 Thessaloniki, Greece; alevridi@chem.auth.gr (A.A.); atsiasioti@gmail.com (A.T.)

² Laboratory of Pharmaceutical Analysis, Department of Pharmaceutical Technology, School of Pharmacy, Aristotle University of Thessaloniki, GR-54124 Thessaloniki, Greece; czacharis@pharm.auth.gr

* Correspondence: ptzanava@chem.auth.gr; Tel.: +30-2310997721, Fax: +30-2310997719

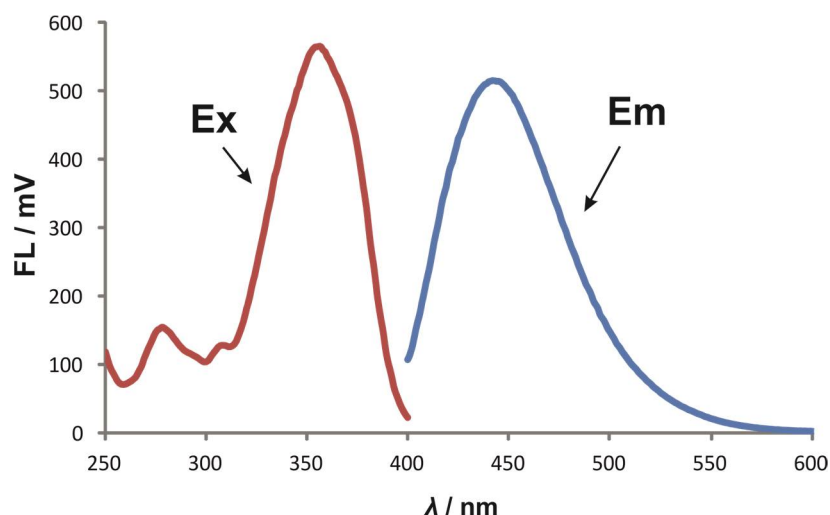


Figure S1. Representative FL off-line spectra of the HIS-OPA derivative.

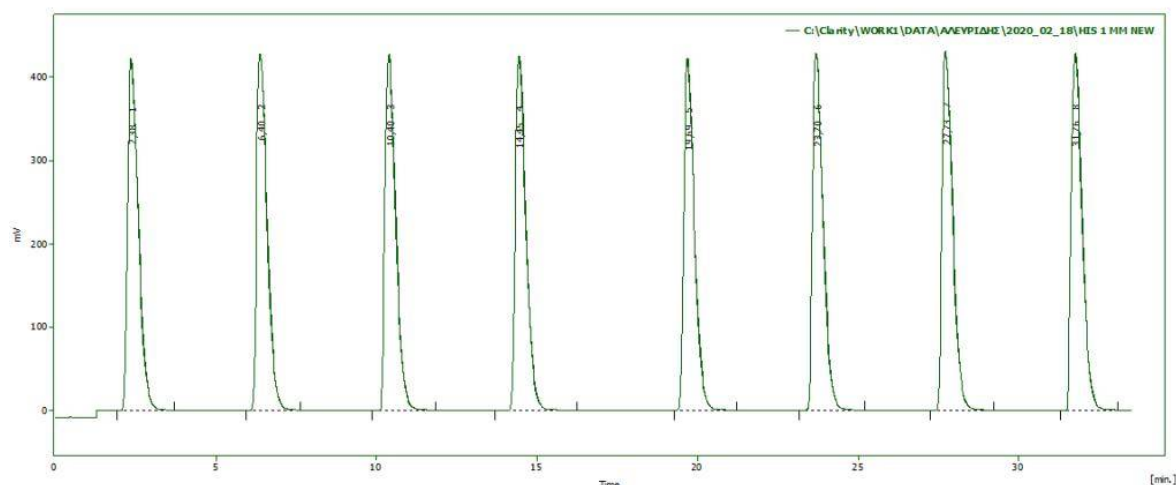


Figure S2. Within day precision at $1.0 \mu\text{mol}\cdot\text{L}^{-1}$ HIS ($n = 8$).

Table S1. Day-to-day precision of the developed method

Working Day	HIS Slope
D1	444.6
D2	426.6
D3	423.0
D4	423.5
D5	423.1
D6	423.3
D7	425.3
D8	382.6
Average (\pmSD)	421.4 (\pm 17.0)
RSD (%)	4.2