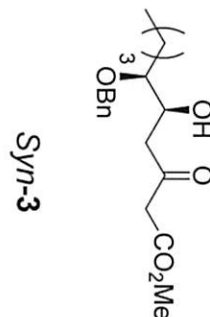


X : parts per Million : Proton

abundance

0 1.0 2.0 3.0 4.0 5.0 6.0 7.0 8.0

¹H NMR



12.106

7.369
7.353
7.346
7.330
7.317
7.291
7.281

4.644
4.632
4.621
4.501
4.489
4.478

4.148

3.726
3.480
3.477

2.738
2.722
2.718
2.708

1.638
1.389
1.364
1.349
1.322
0.922
0.915
0.908
0.901
0.894

5.50

11.46
11.46

3.20

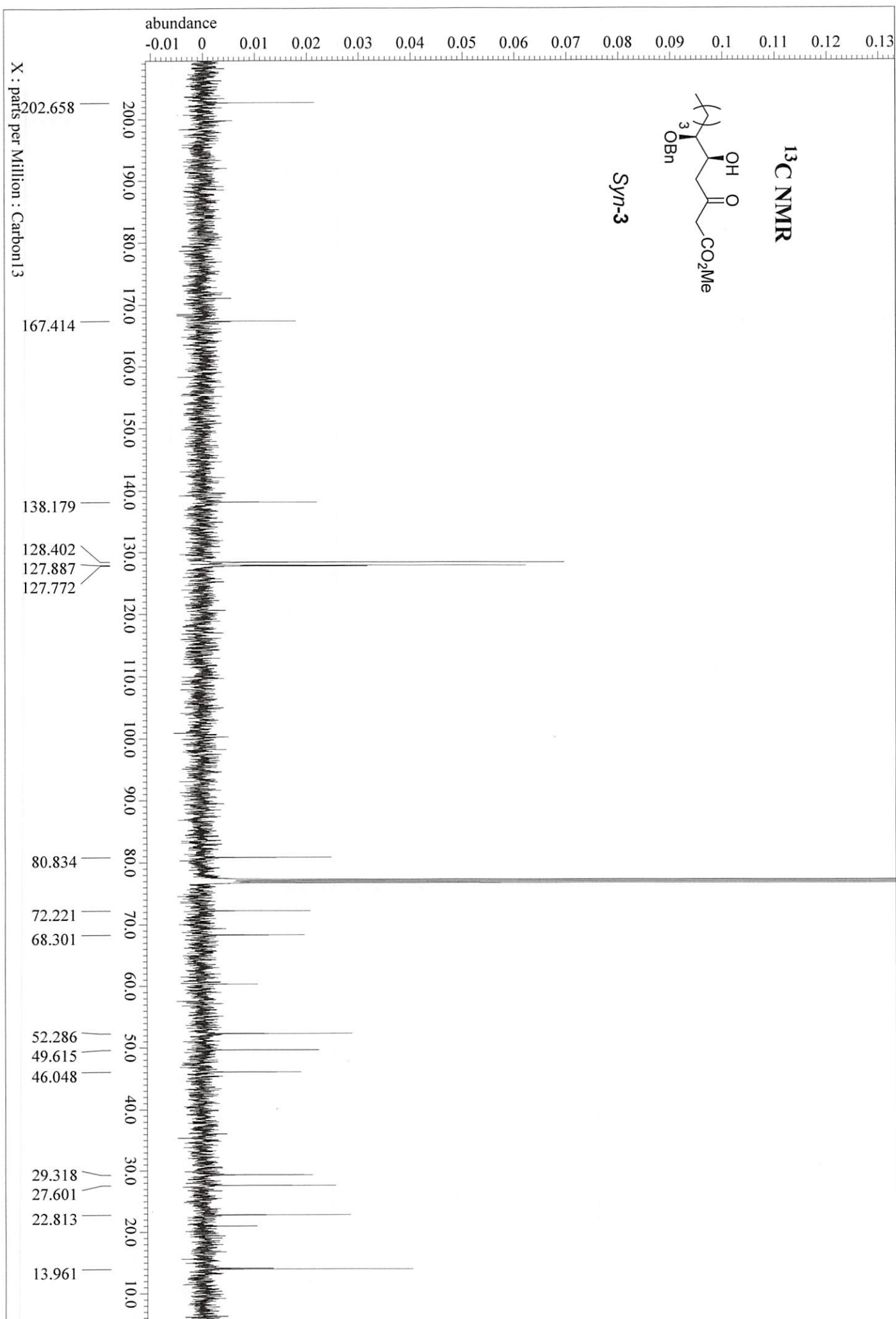
2.00

1.00

6.37

6.87

3.17

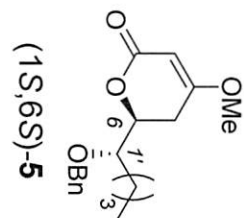


X : parts per Million : Proton

abundance

0 1.0 2.0 3.0 4.0 5.0 6.0 7.0 8.0 9.0 10.0

¹H NMR



7.360
7.351
7.342
7.310
7.301
7.293
7.282
7.274

7.0

5.00

6.0

5.136
5.134
5.133

5.0

1.00

1.72

4.669
4.646
4.629
4.606
4.533
4.506

4.0

1.00

1.00

11.46

14.07

3.741
3.613
3.604
3.596
3.587

3.0

3.00

1.00

2.697
2.692
2.689
2.666
2.663
2.285
2.277
2.250
2.242

2.0

1.00

1.00

13.73

14.08

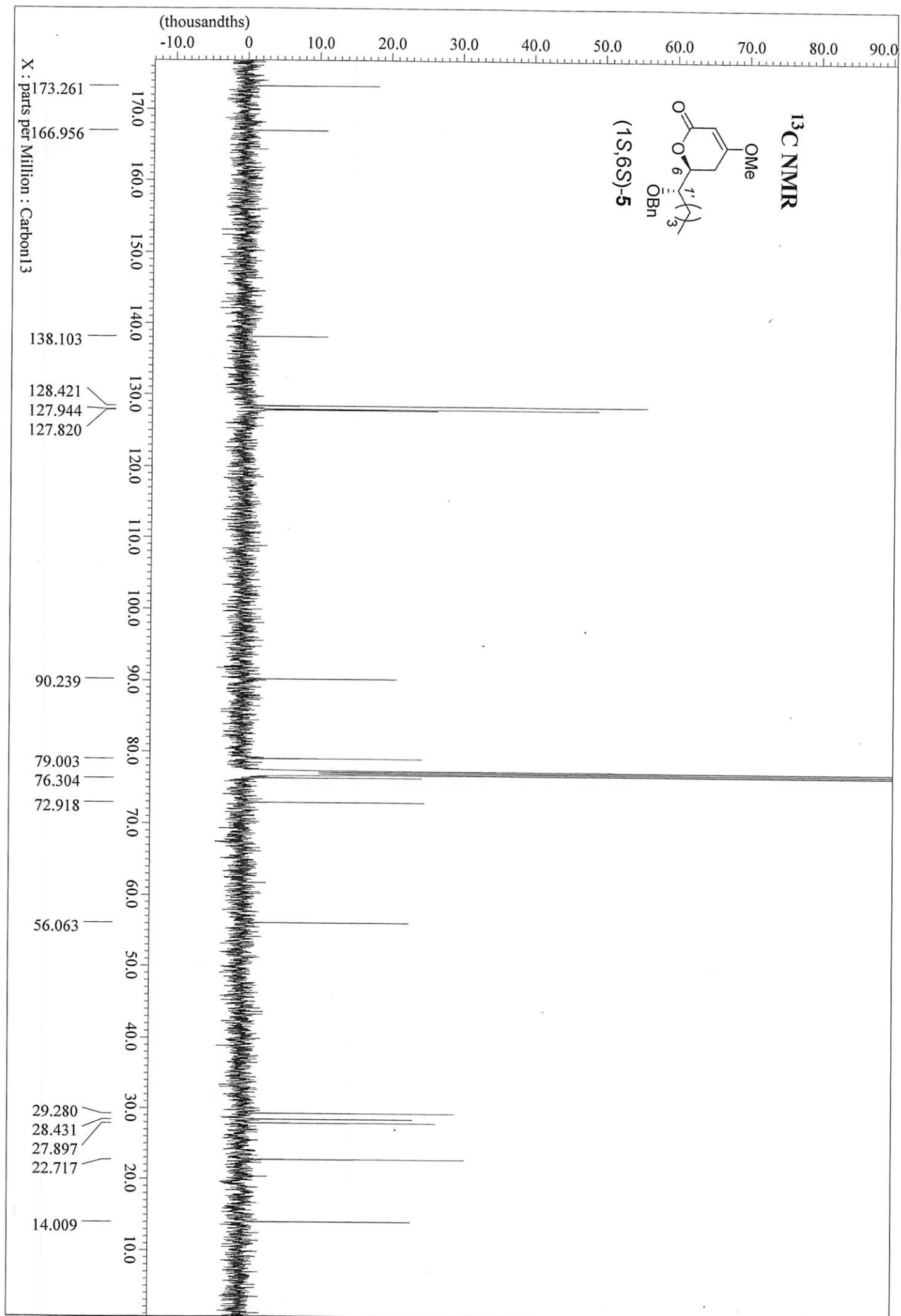
1.675
1.563
1.347
1.338
1.325
1.311
1.301
0.908
0.901
0.894
0.888
0.881

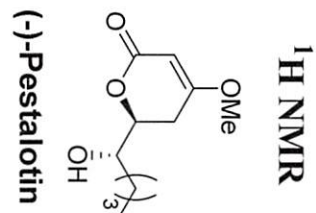
1.0

6.00

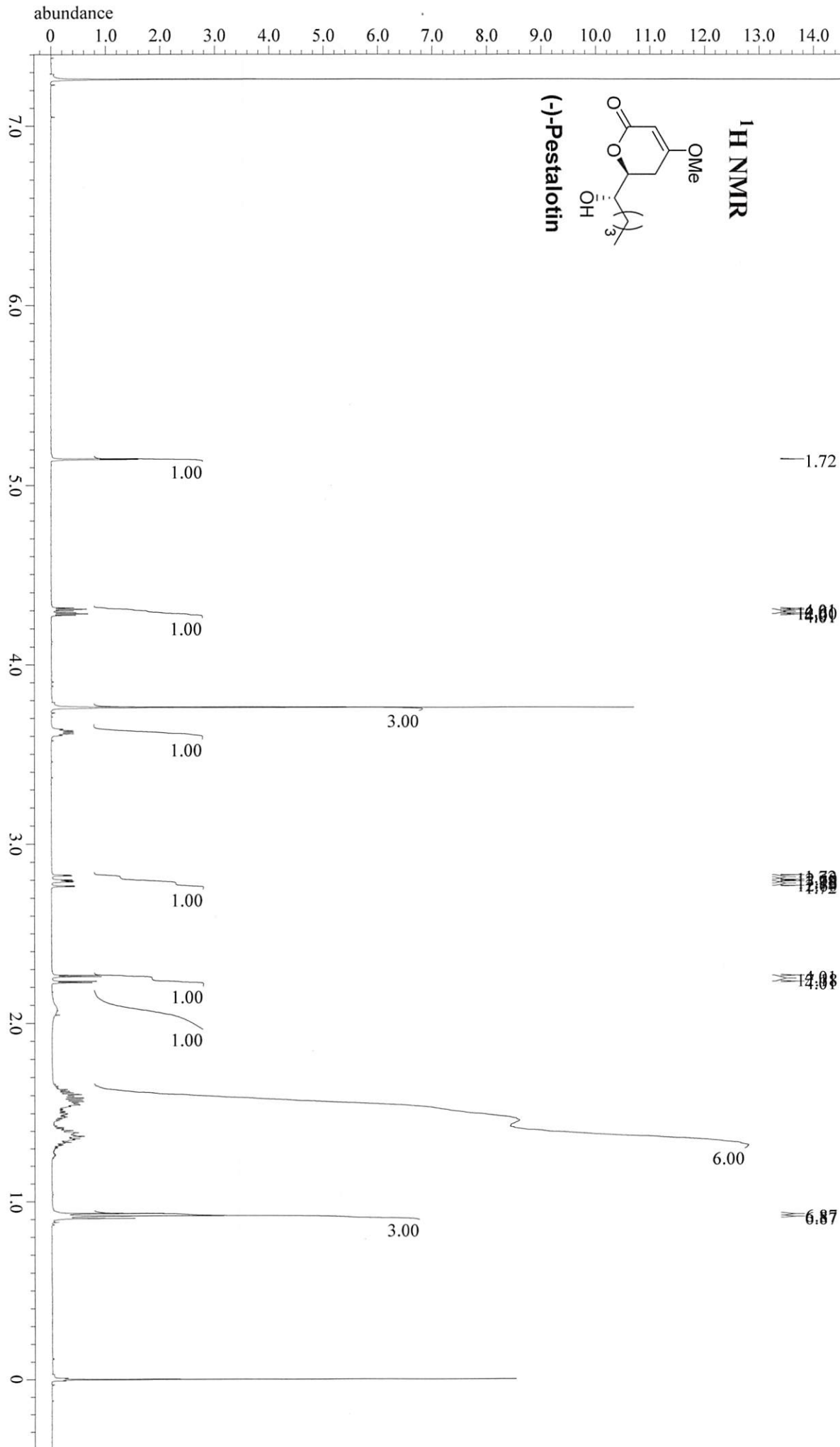
3.00

6.87





X : parts per Million : Proton



1.72

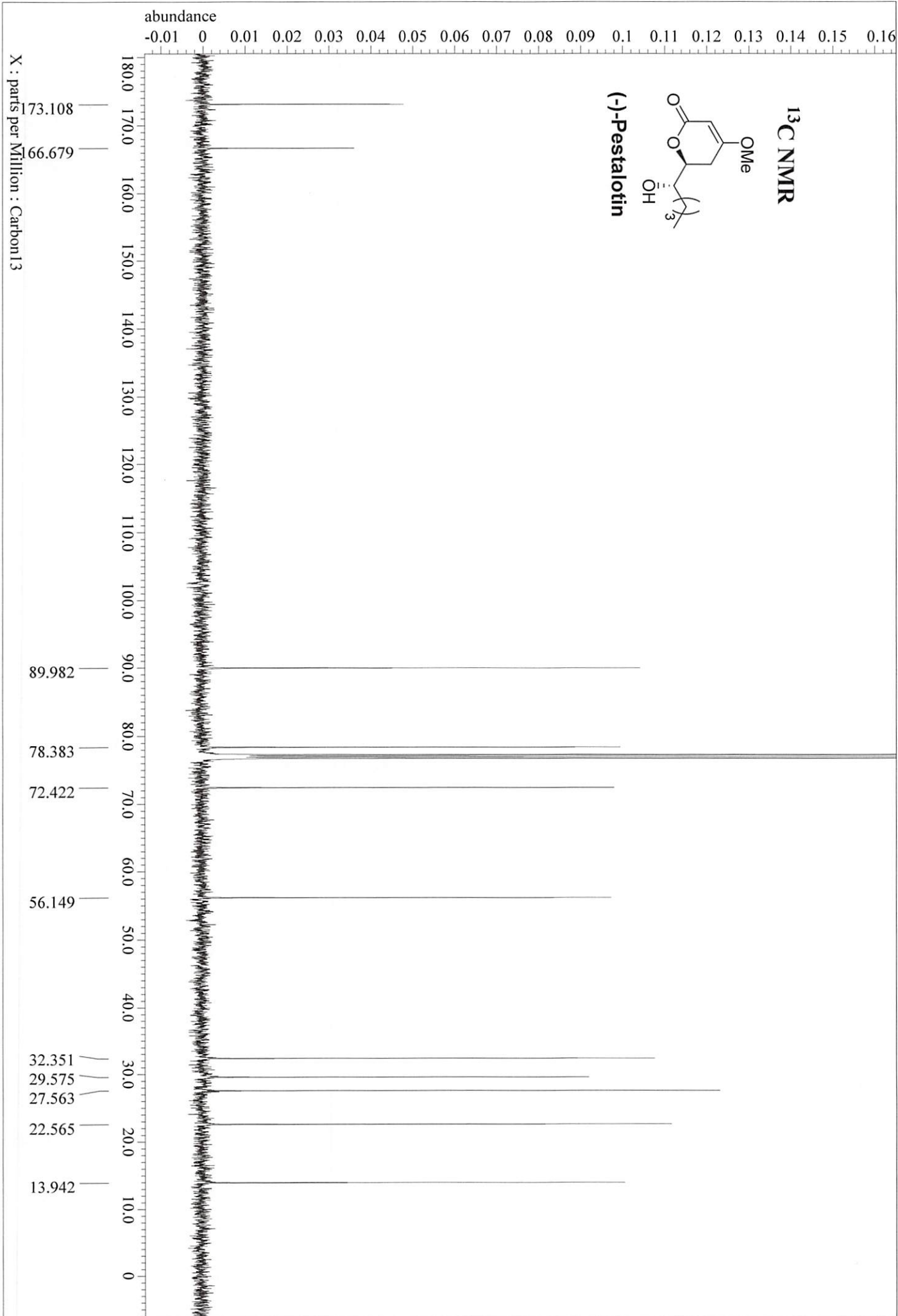
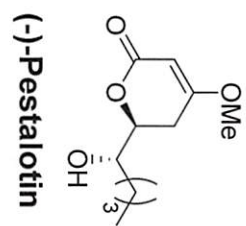
14.00

12.00

14.00

6.87

¹³C NMR

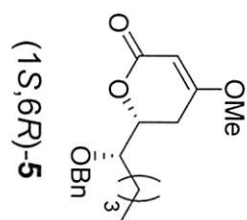


X : parts per Million : Proton

abundance

0 1.0 2.0 3.0 4.0 5.0 6.0 7.0 8.0 9.0 10.0 11.0 12.0

¹H NMR



7.348
7.338
7.309
7.301
7.293
7.283
7.275

5.00

5.140
5.138
5.136

1.00

1.72

4.726
4.643
4.620
4.404
4.387
4.379

1.00

11.46

1.00

11.46

1.00

14.00

3.776
3.768
3.761
3.753
3.742
3.730

4.00

2.844
2.840
2.809
2.806
2.784
2.781
2.372
2.364
2.337
2.333
2.329

1.00

14.00

1.00

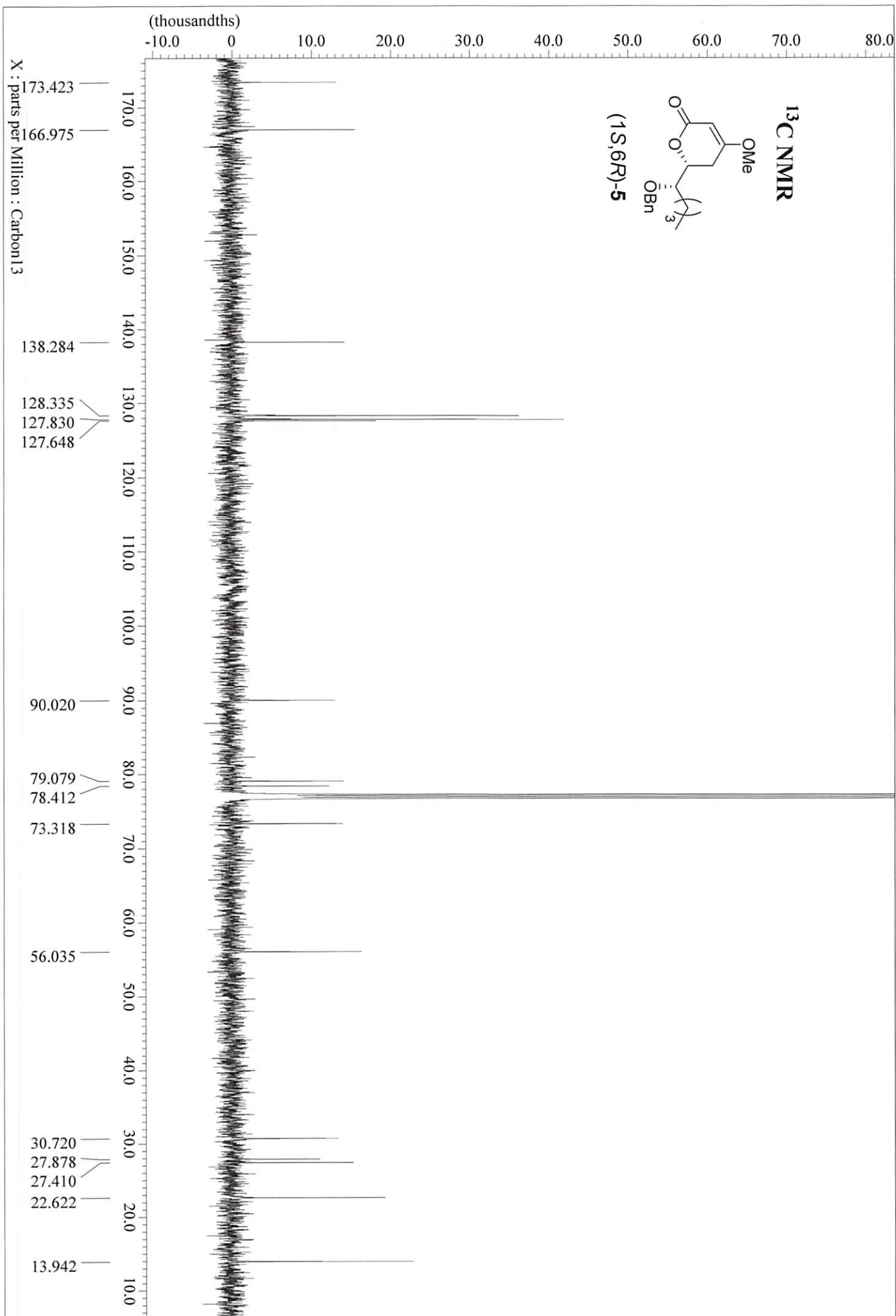
14.00

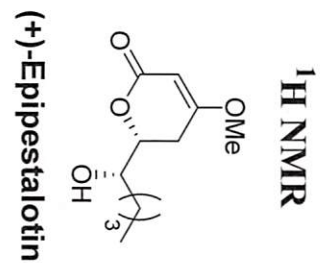
1.555
1.490
1.334
1.326
1.318
1.311
1.293
0.908
0.901
0.894
0.888
0.881

6.00

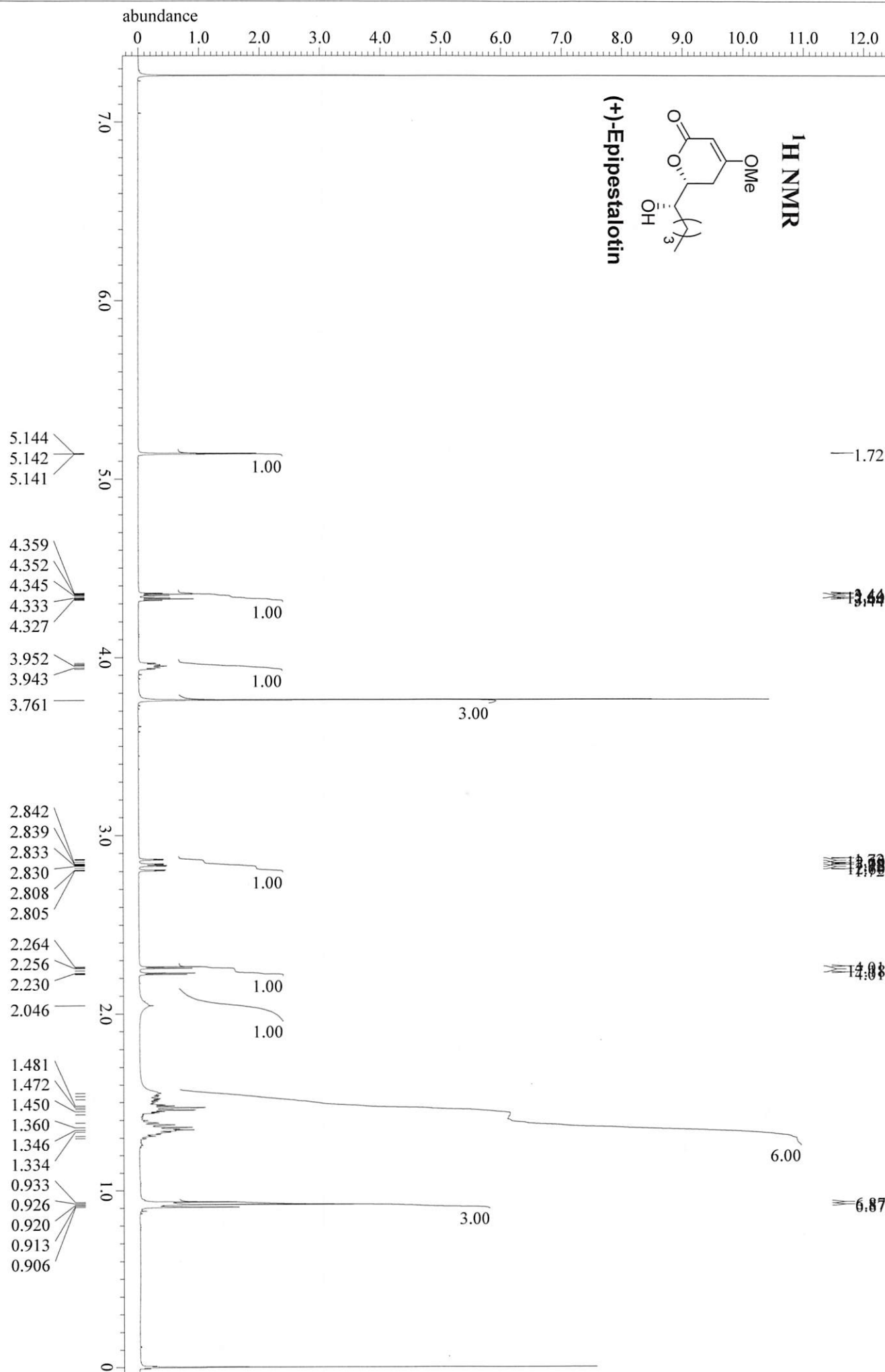
3.00

6.87





X : parts per Million : Proton



¹³C NMR

(+)-Epipestalotin

