

Supplementary material 3

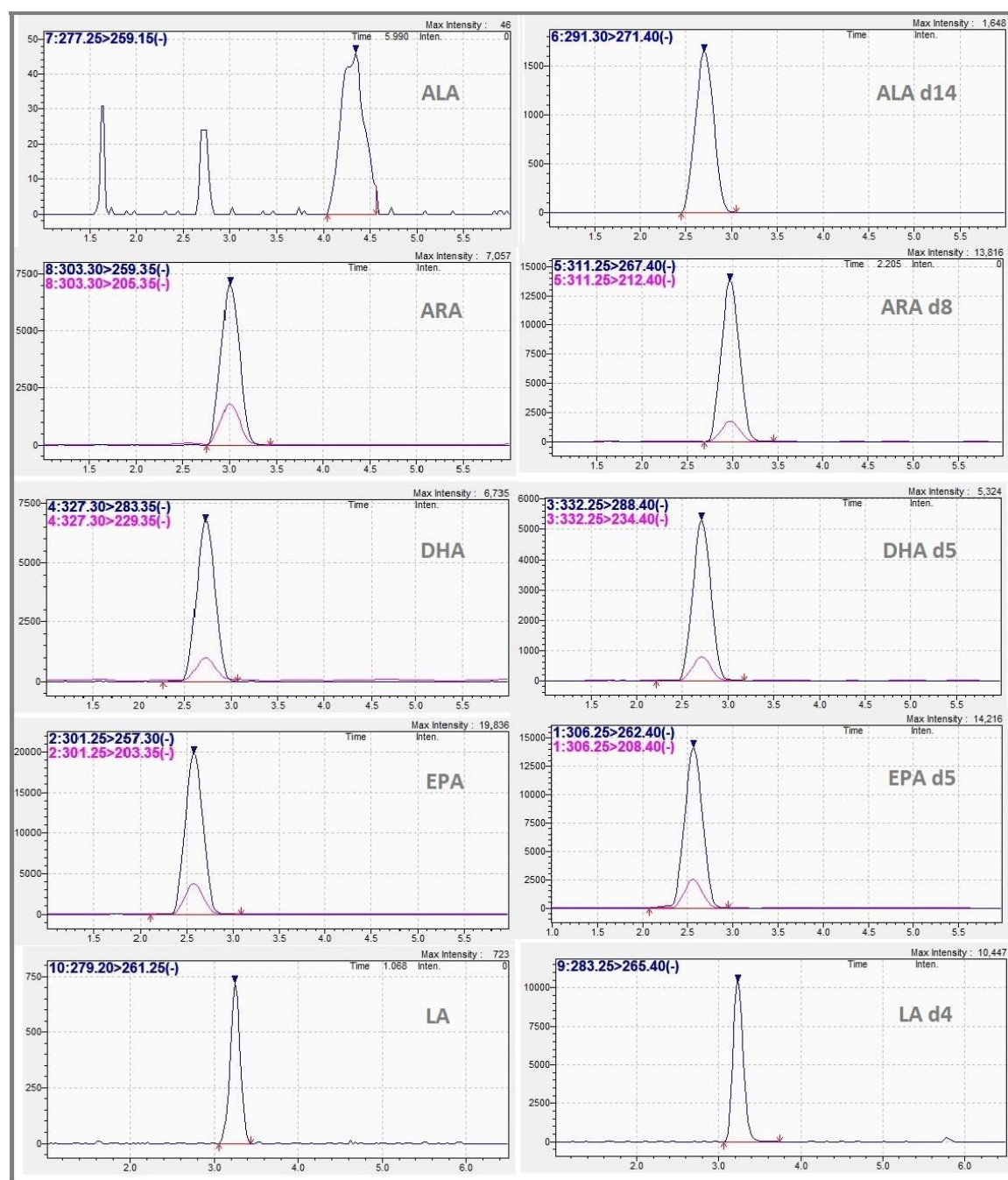


Figure S3. Evaluation of Acquity UPLC BEH C18 column. MRM chromatograms of ALA, ALA-d14, ARA, ARA-d8, DHA, DHA-d5, EPA, EPA-d5, LA and LA-d4 standards at concentration of 0.016, 0.2, 0.08, 0.1, 0.016, 0.1, 0.016, 0.1, 0.08 and 0.2 $\mu\text{g/mL}$ respectively.

Legend: ALA— α -linolenic acid, ARA—arachidonic acid, DHA—docosahexaenoic acid, EPA—eicosapentaenoic acid, LA—linoleic acid