

Figure S1. Alkaline phosphatase protein concentration-dependent formation of gemcitabine. Compound-3 (1 μ M) was incubated with alkaline phosphatase concentration ranged from 0.01~0.2 mg/mL at 37 $^{\circ}$ C (n=3).

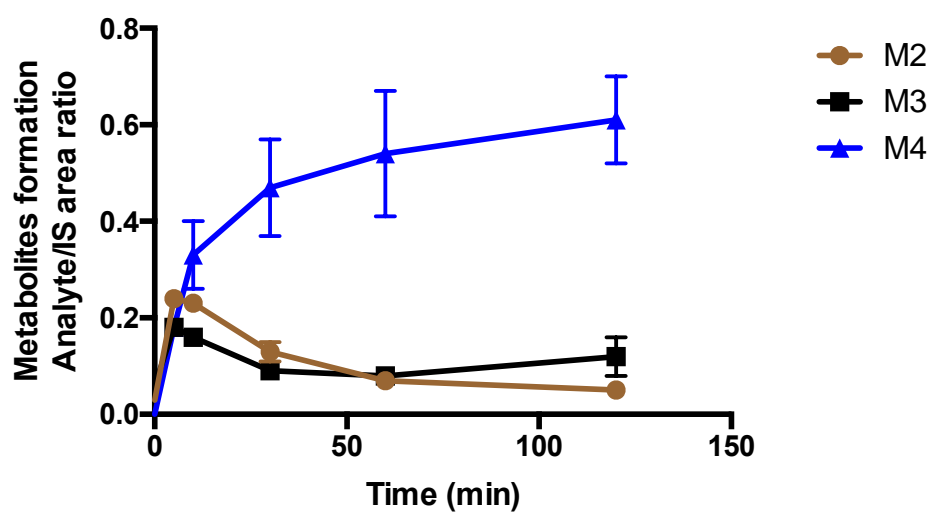


Figure S2. Formation of oxidative metabolites of Compound-3 in human recombinant CYP4F2. Compound-3 (1 μ M) was incubated with human recombinant CYP4F2 (50 nM) in the presence of NADPH at 37 $^{\circ}$ C.