

Supplementary Information for Comprehensive Quantitative Analysis of WLJ Herbal Tea Using Multiple Chromatographic Technologies

Chaozhan Lin ^a, Runjing Zhang ^a, Yufeng Yao ^a, Chenchen Zhu ^{a,*}

^a Institute of Clinical Pharmacology, Guangzhou University of Chinese Medicine, No.12 Jichang Rd,
Guangzhou 510405, P.R. China

* Corresponding authors. Tel.: +86 2036585303; fax: +86 2036588015.

E-mail addresses: zhuchenchen@vip.sina.com (C.-C. Zhu).

Contents

The positive/negative MS/MS spectra of the identified compounds from WLJHT.

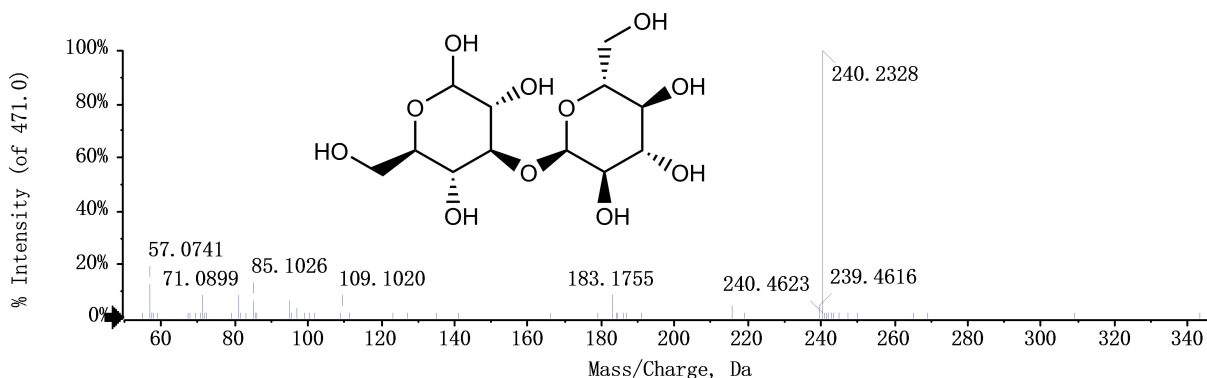


Figure S1 The positive MS/MS spectra of compound 1

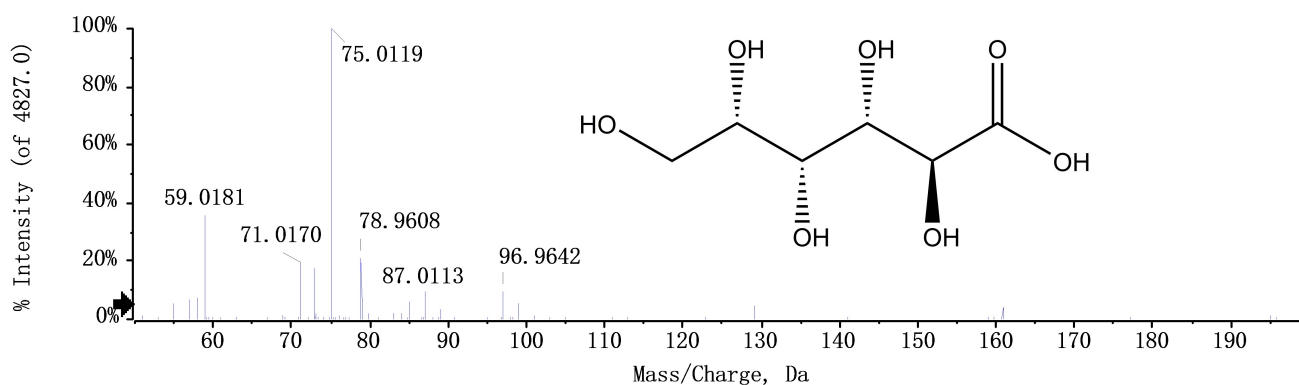


Figure S2 The negative MS/MS spectra of compound 2

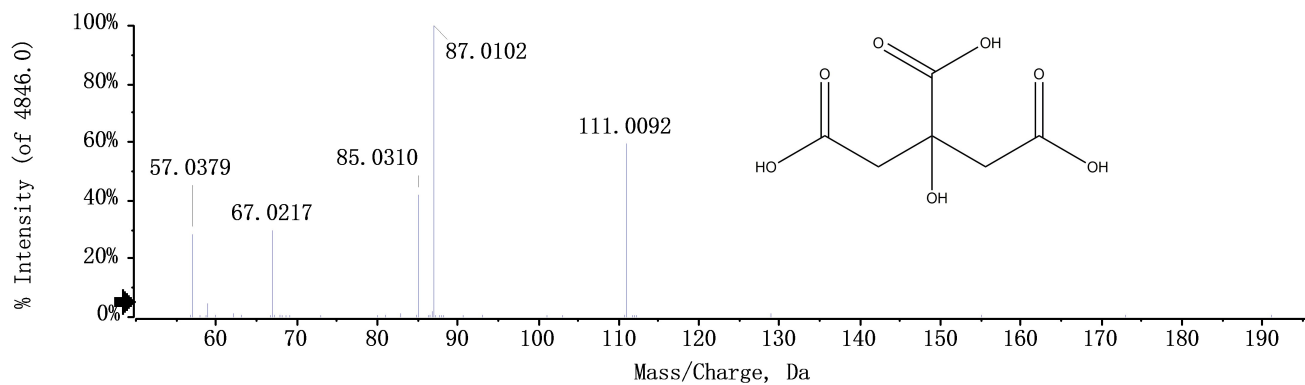


Figure S3 The negative MS/MS spectra of compound 3

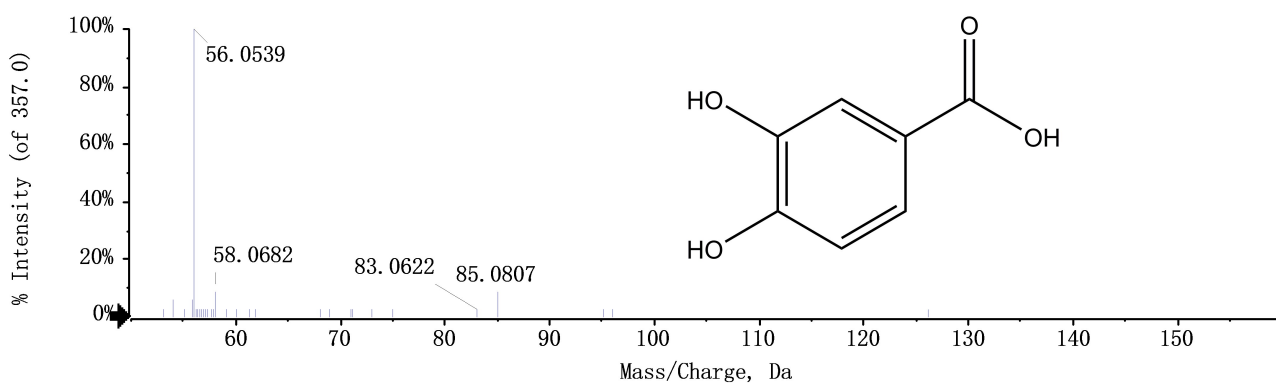


Figure S4A The positive MS/MS spectra of compound 4

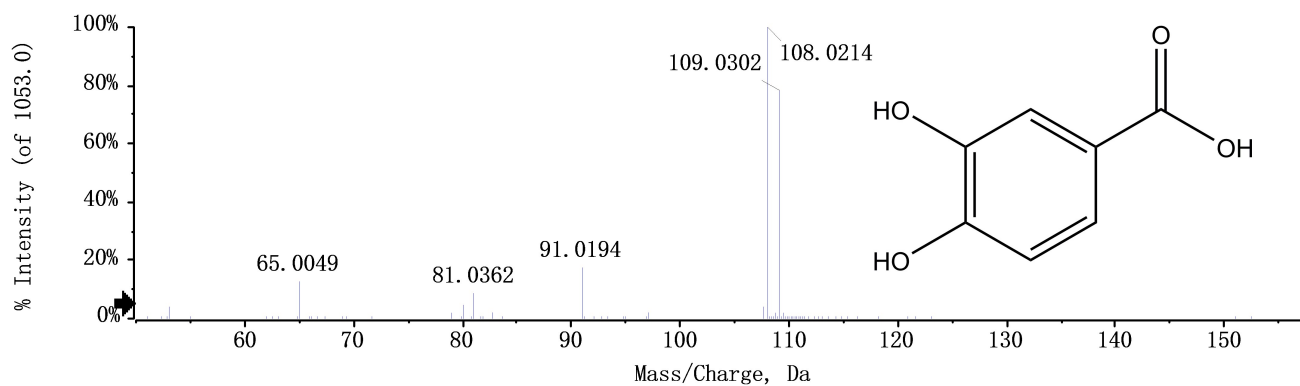


Figure S4B The negative MS/MS spectra of compound 4

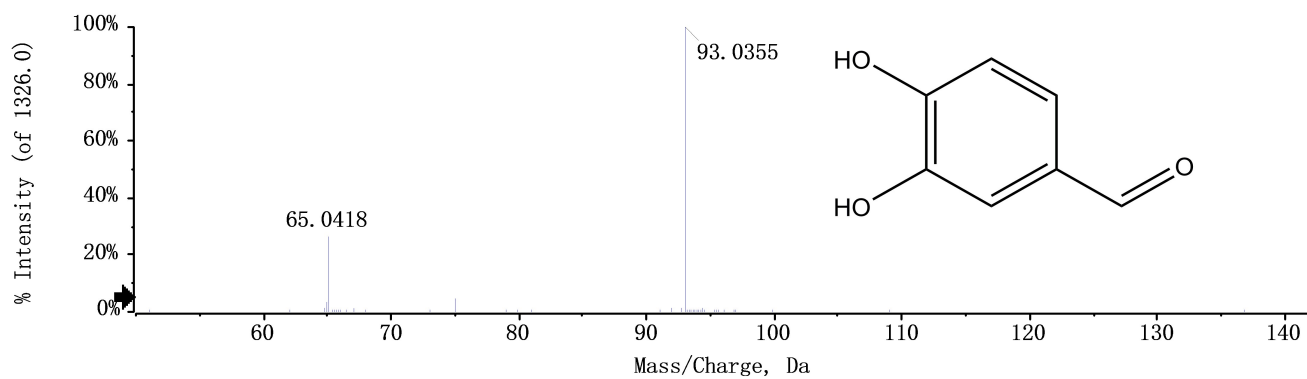


Figure S5 The negative MS/MS spectra of compound 5

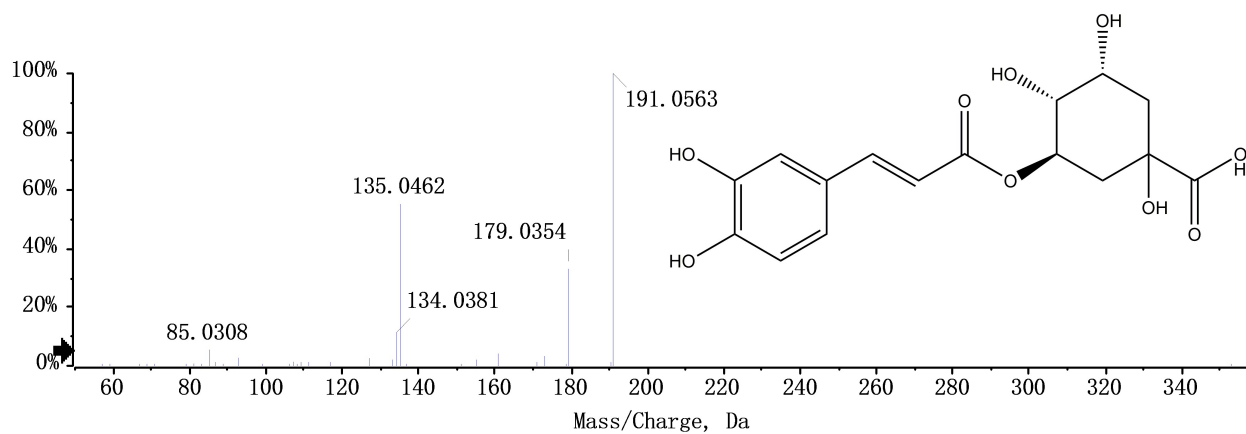


Figure S6 The negative MS/MS spectra of compound 6

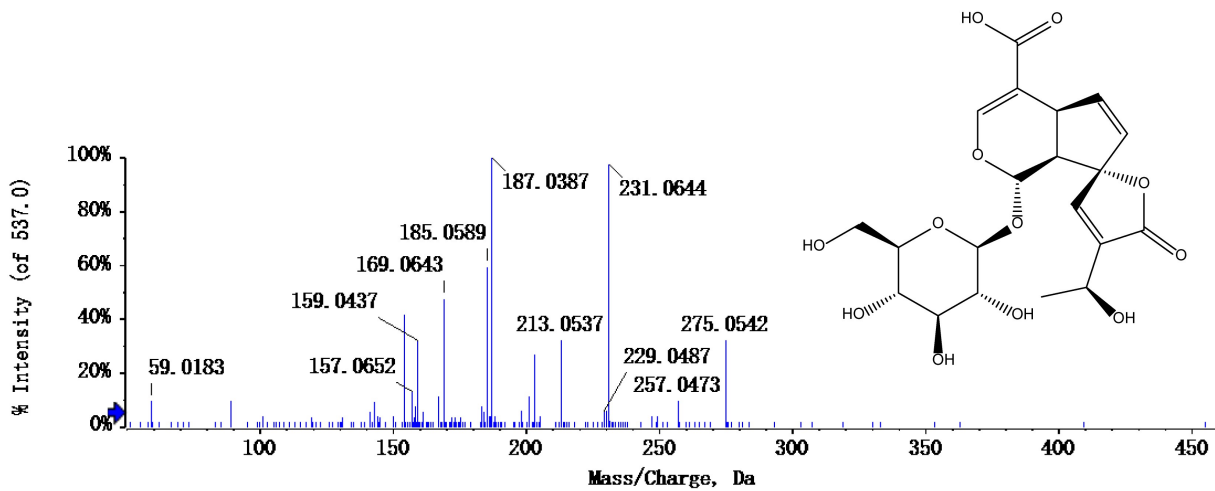


Figure S7 The negative MS/MS spectra of compound 7

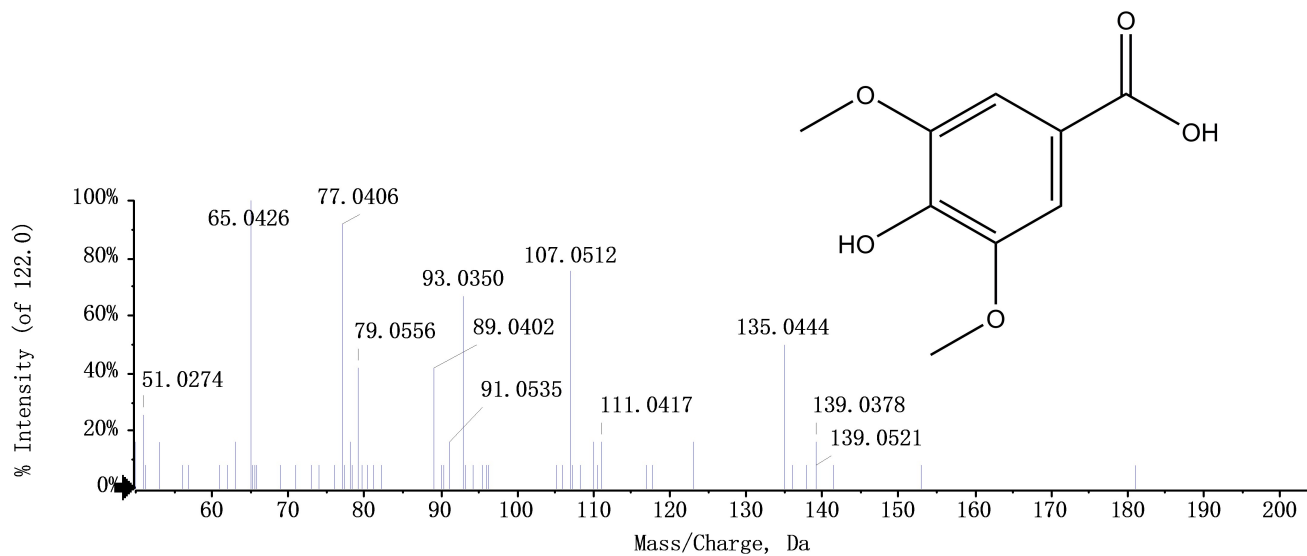


Figure S8A The positive MS/MS spectra of compound 8

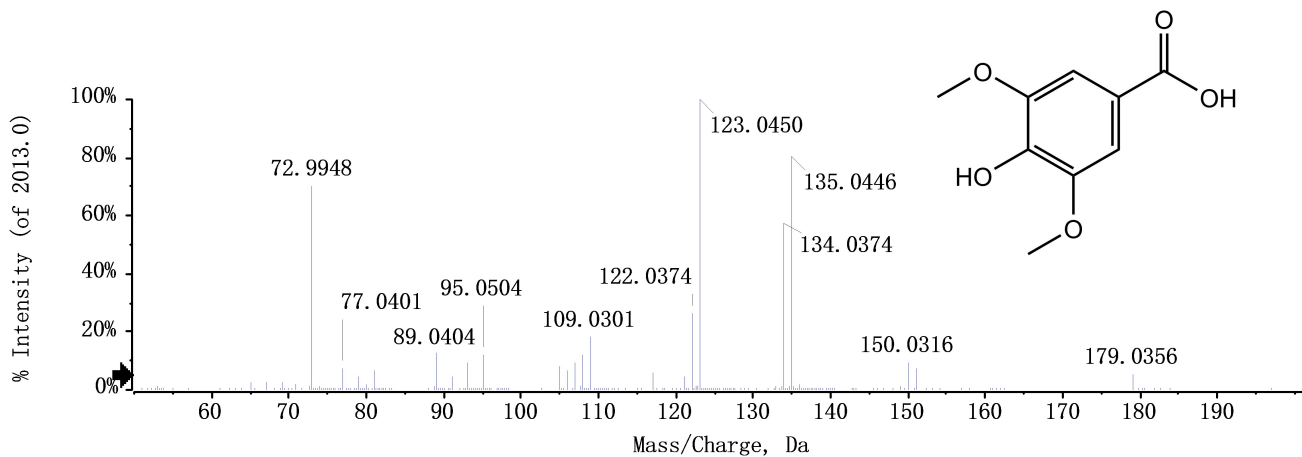


Figure S8B The negative MS/MS spectra of compound 8

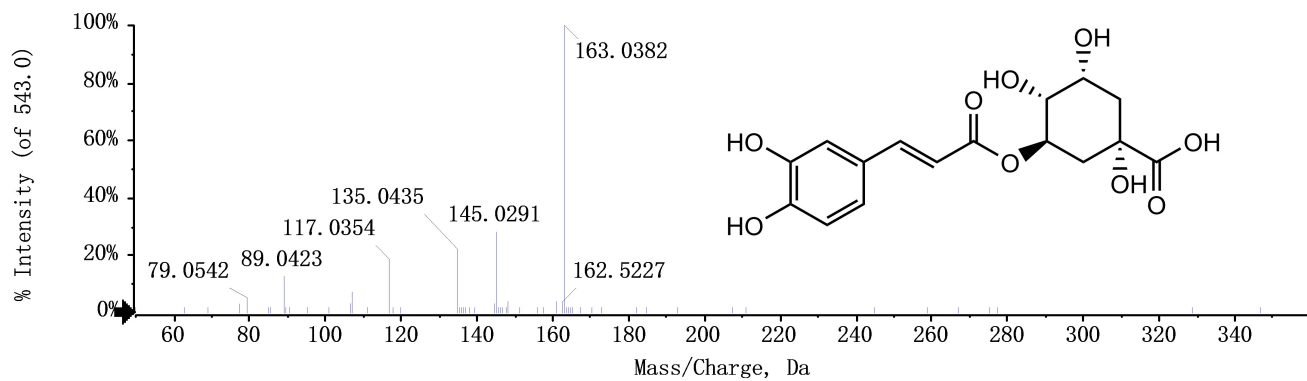


Figure S9A The positive MS/MS spectra of compound 9

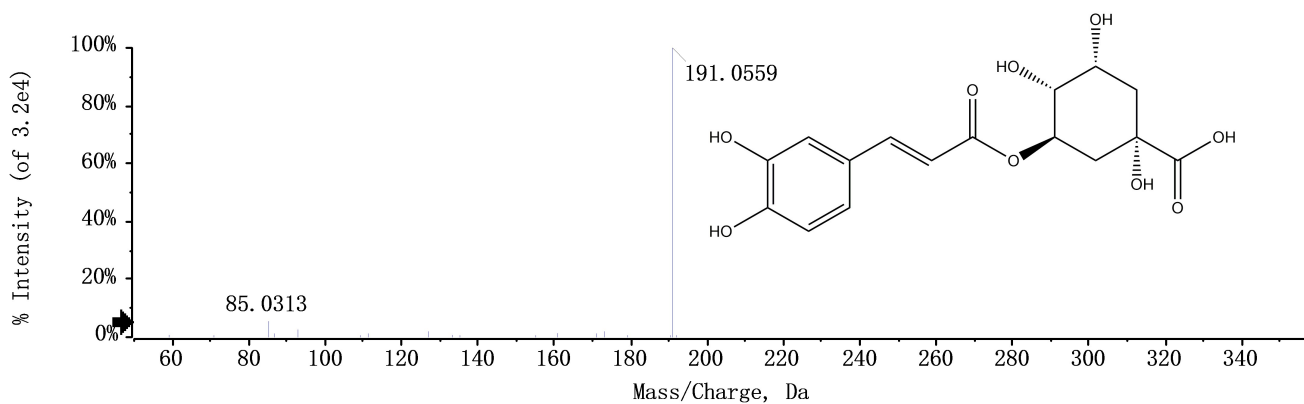


Figure S9B The negative MS/MS spectra of compound 9

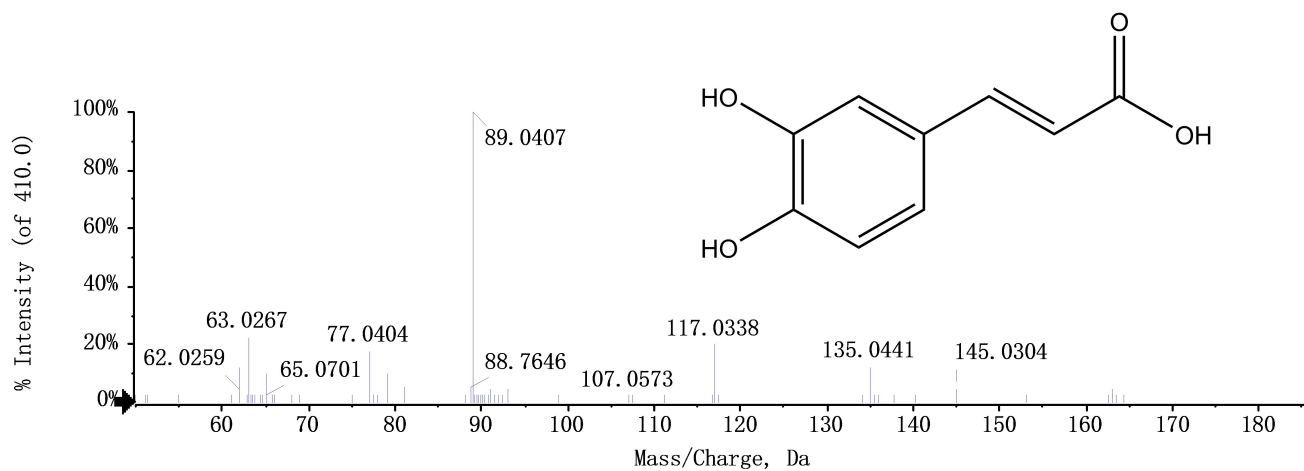


Figure S10A The positive MS/MS spectra of compound 10

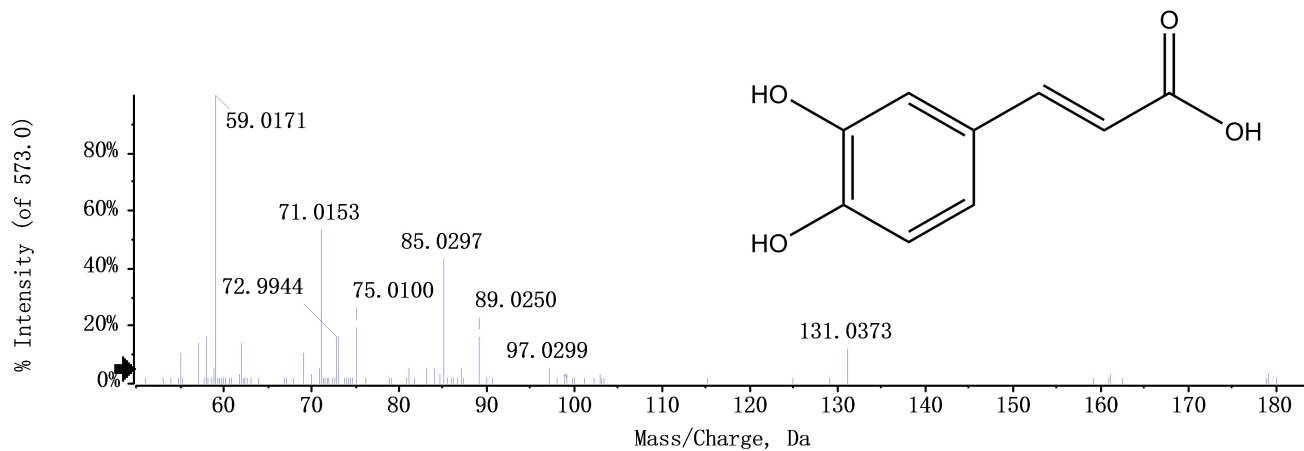


Figure S10B The negative MS/MS spectra of compound 10

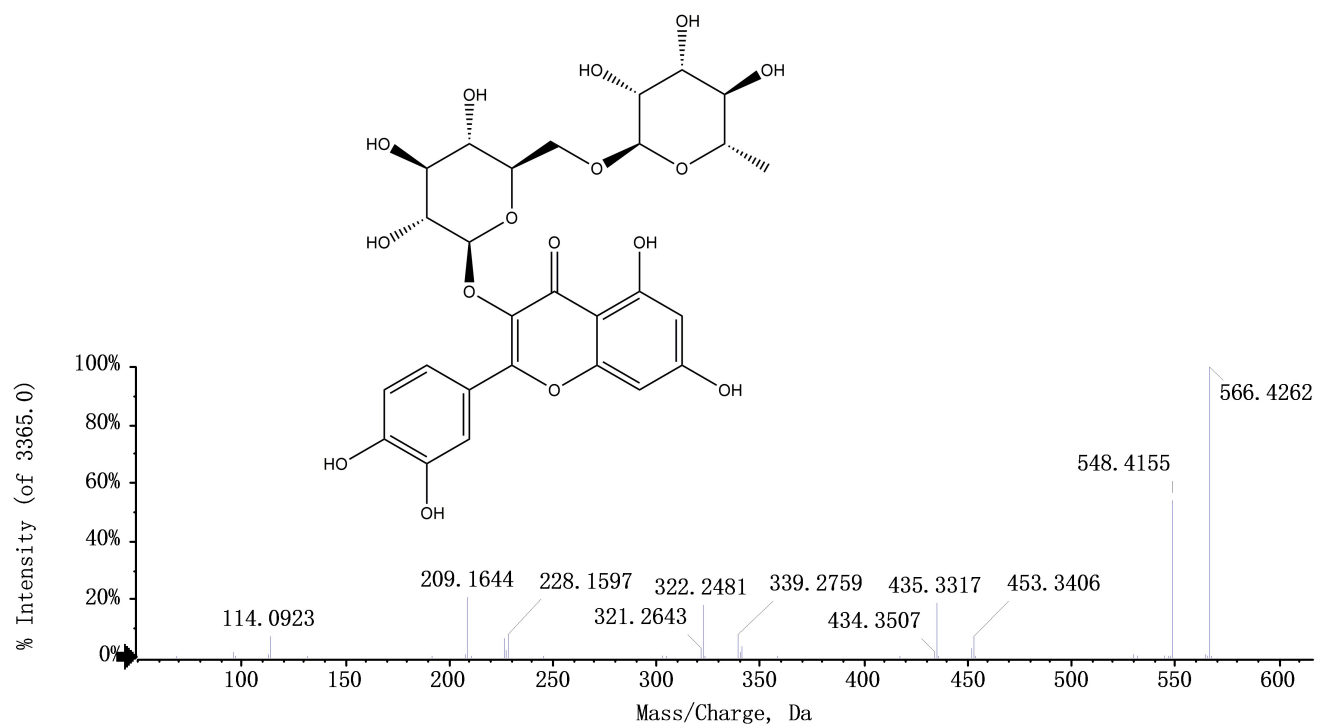


Figure S11 The positive MS/MS spectra of compound 11

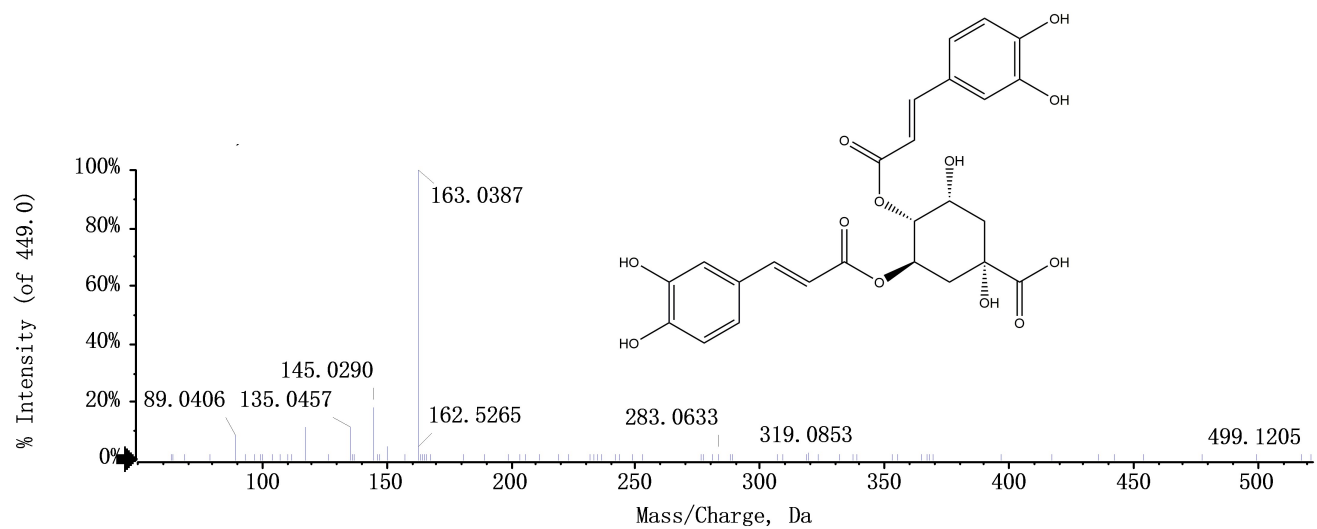


Figure S12A The positive MS/MS spectra of compound 12

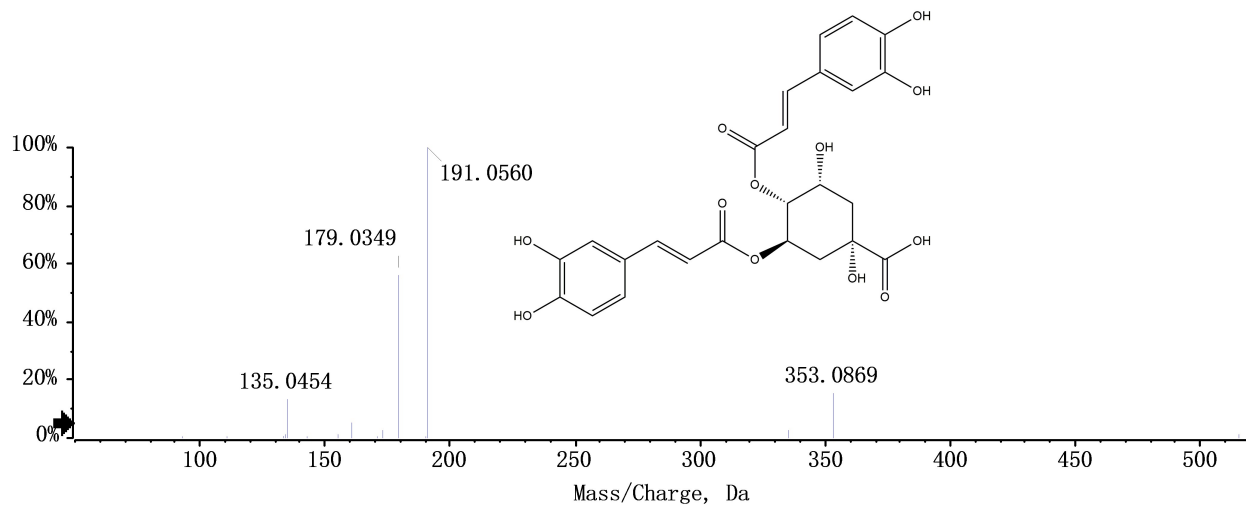


Figure S12B The negative MS/MS spectra of compound 12

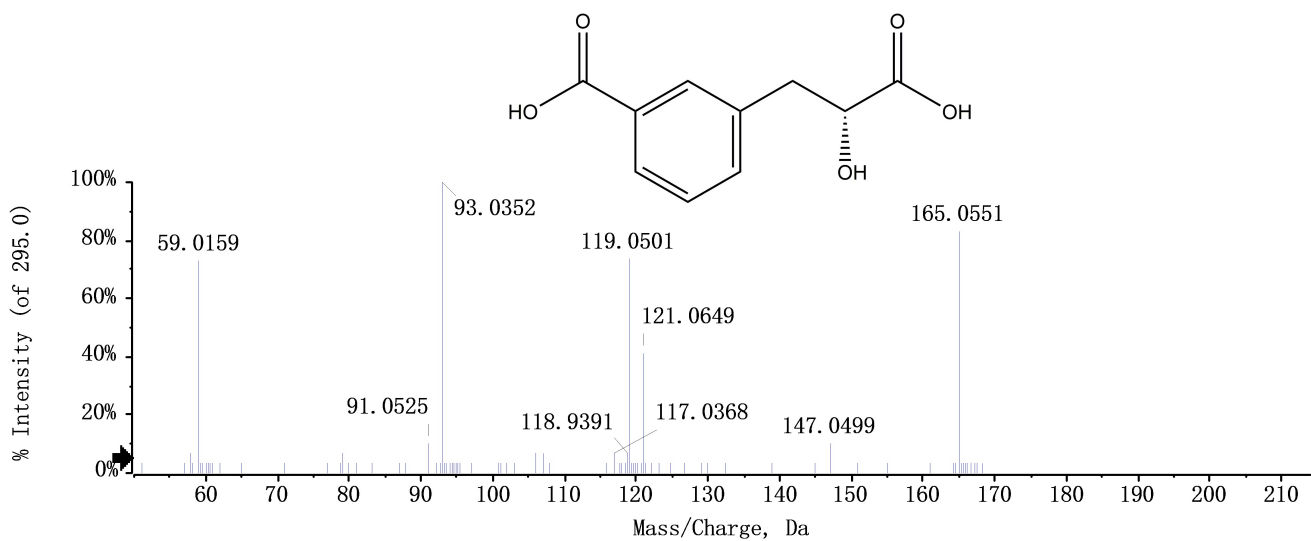


Figure S13 The negative MS/MS spectra of compound 13

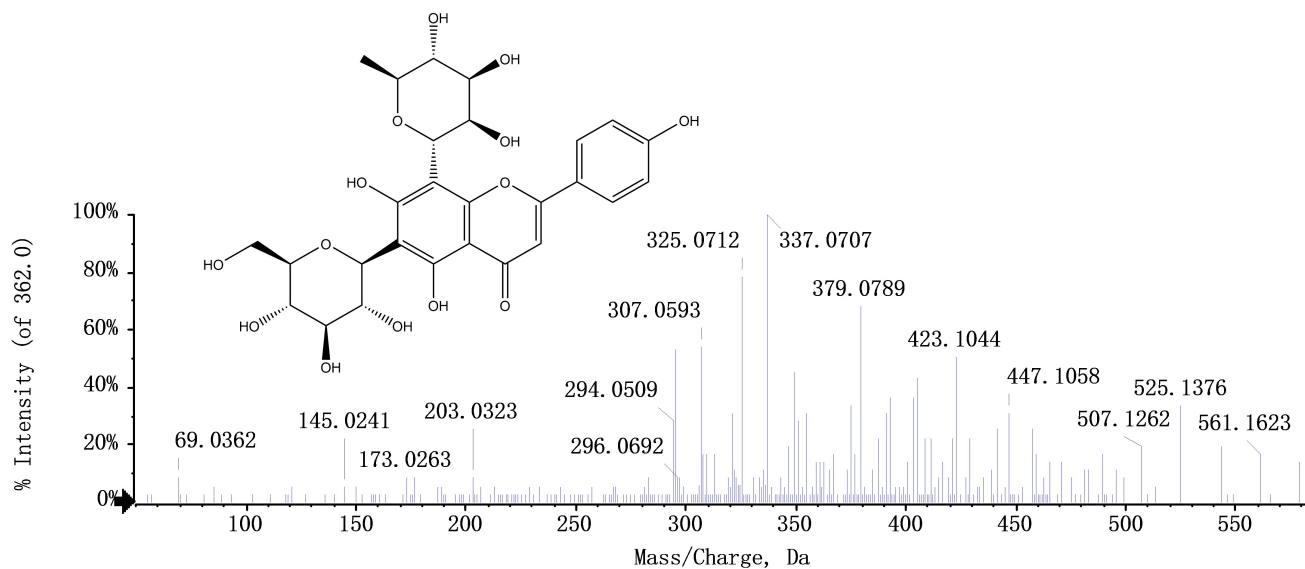


Figure S14A The positive MS/MS spectra of compound 14

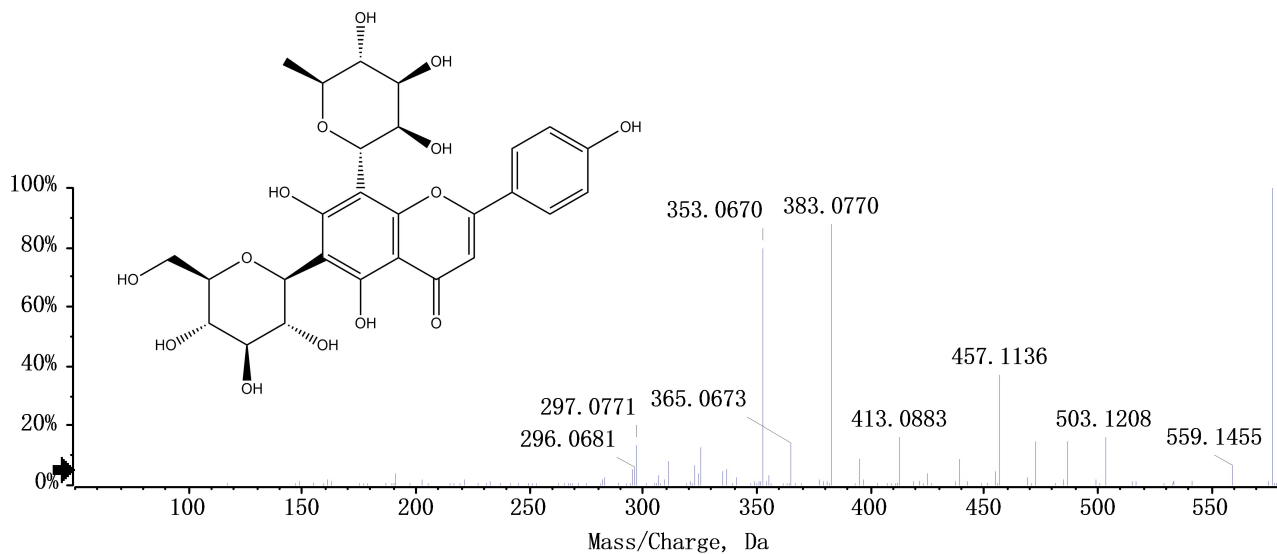


Figure S14B The negative MS/MS spectra of compound 14

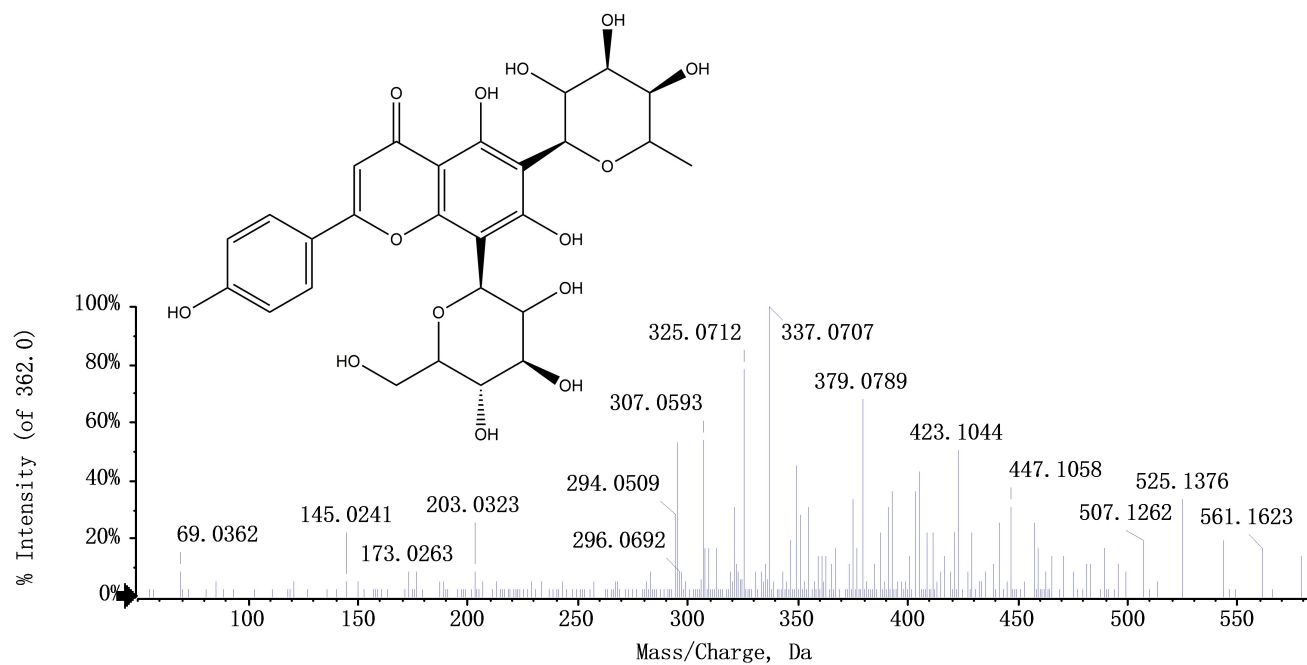


Figure S15A The positive MS/MS spectra of compound 15

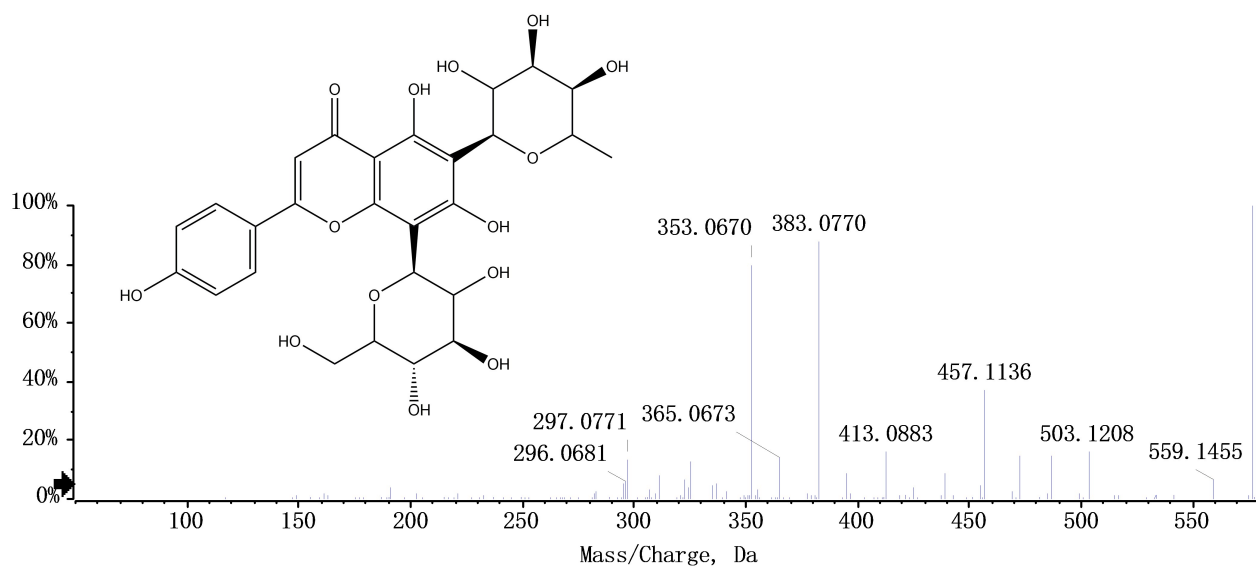


Figure S15B The negative MS/MS spectra of compound 15

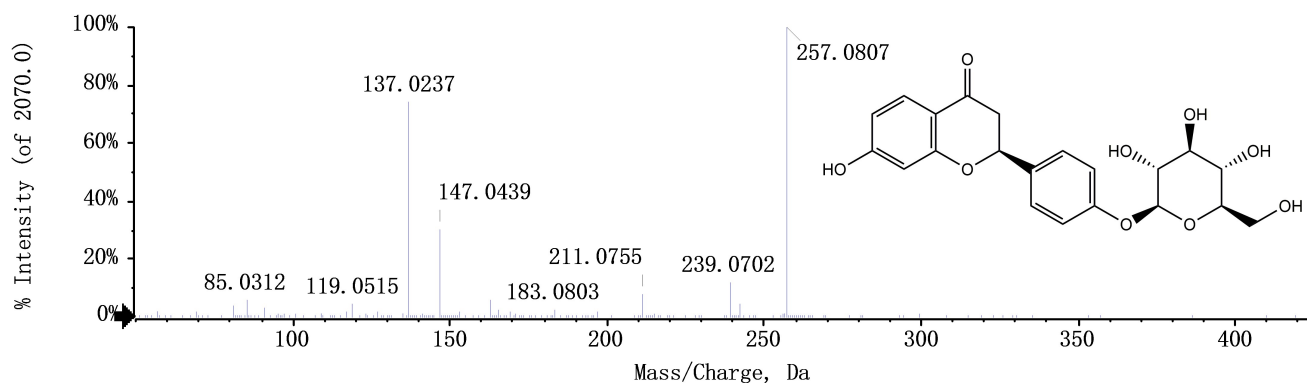


Figure S16A The positive MS/MS spectra of compound 16

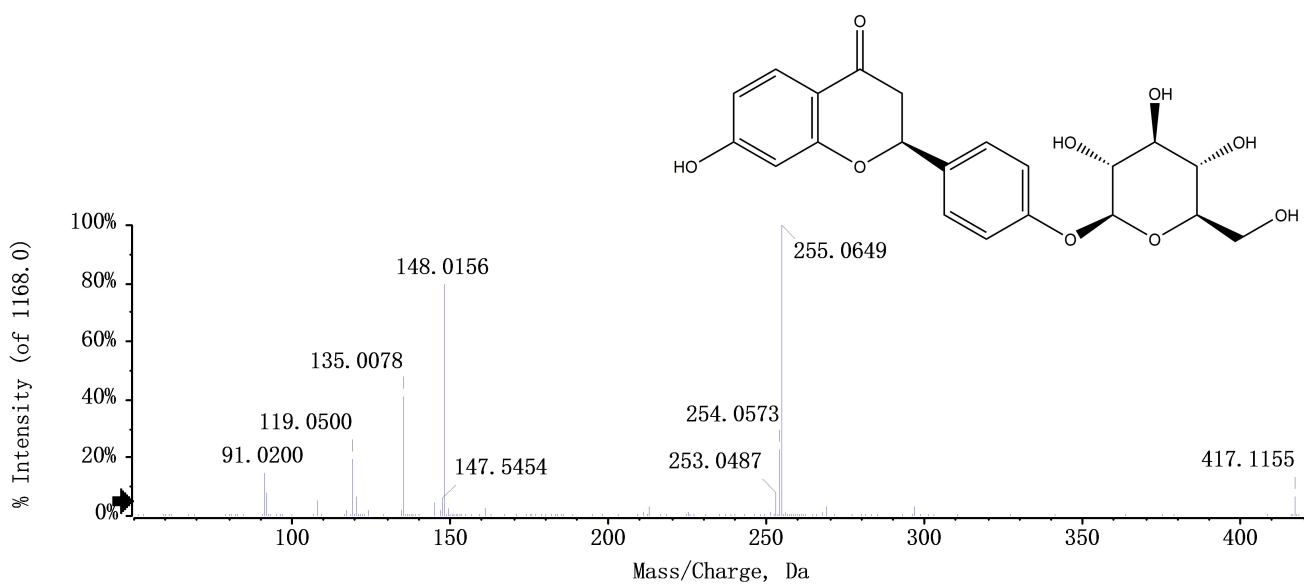


Figure S16B The negative MS/MS spectra of compound 16

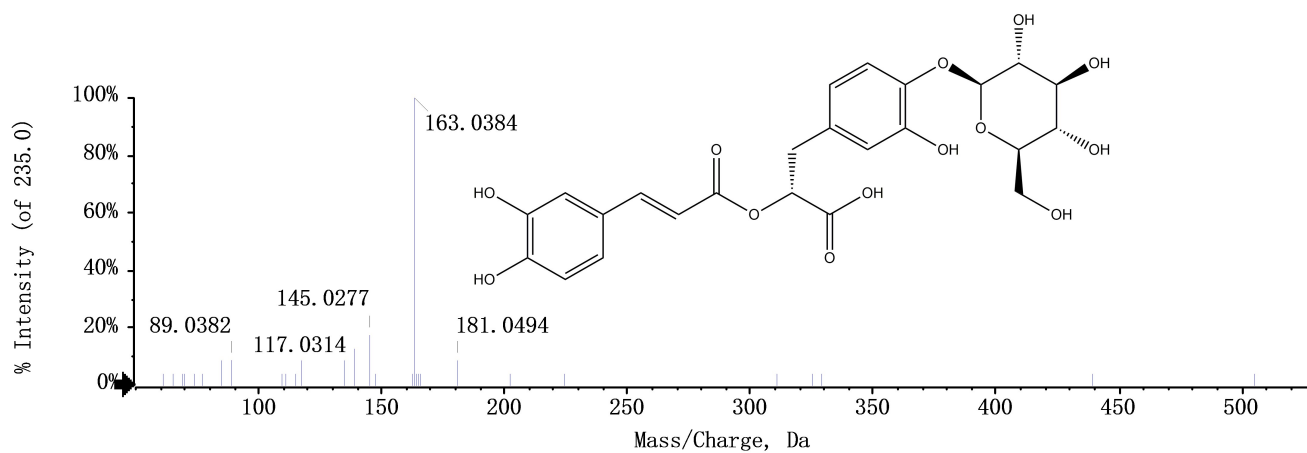


Figure S17A The positive MS/MS spectra of compound 17

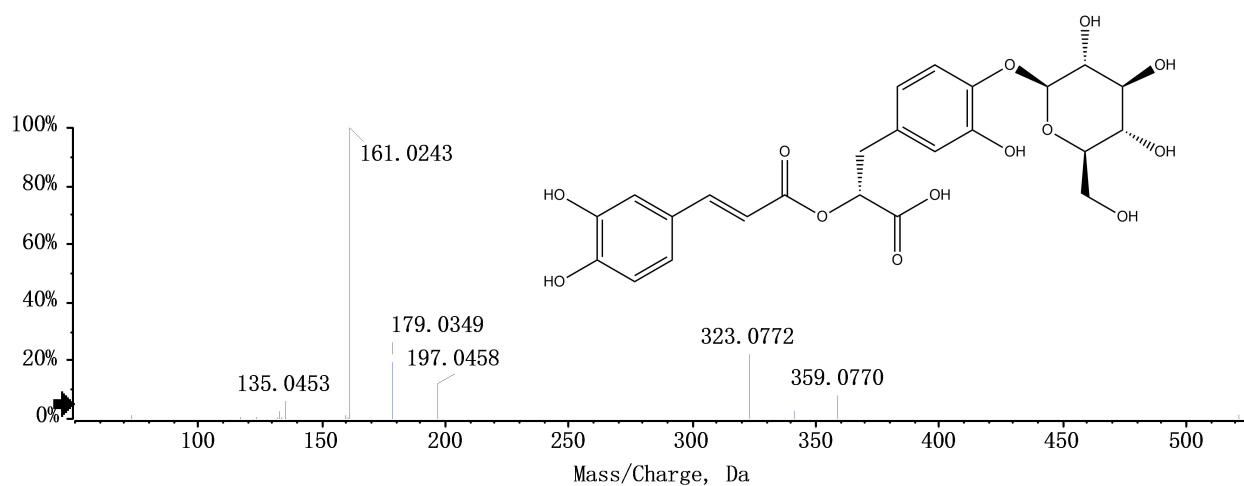


Figure S17B The negative MS/MS spectra of compound 17

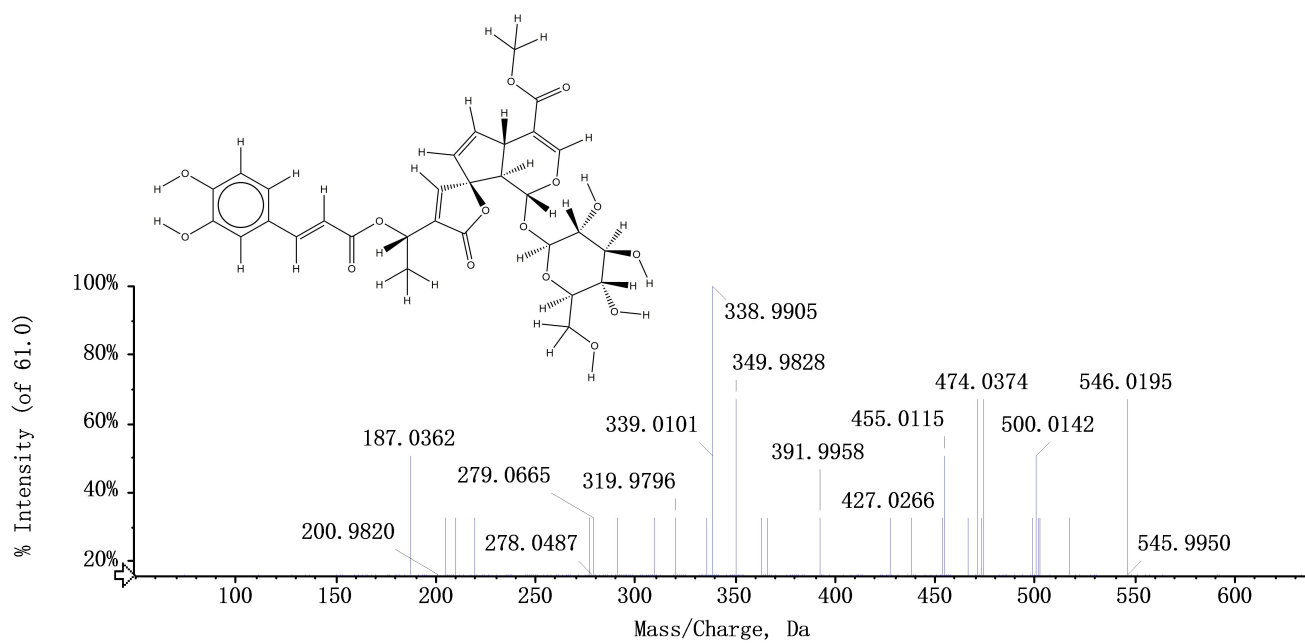


Figure S18 The positive MS/MS spectra of compound 18

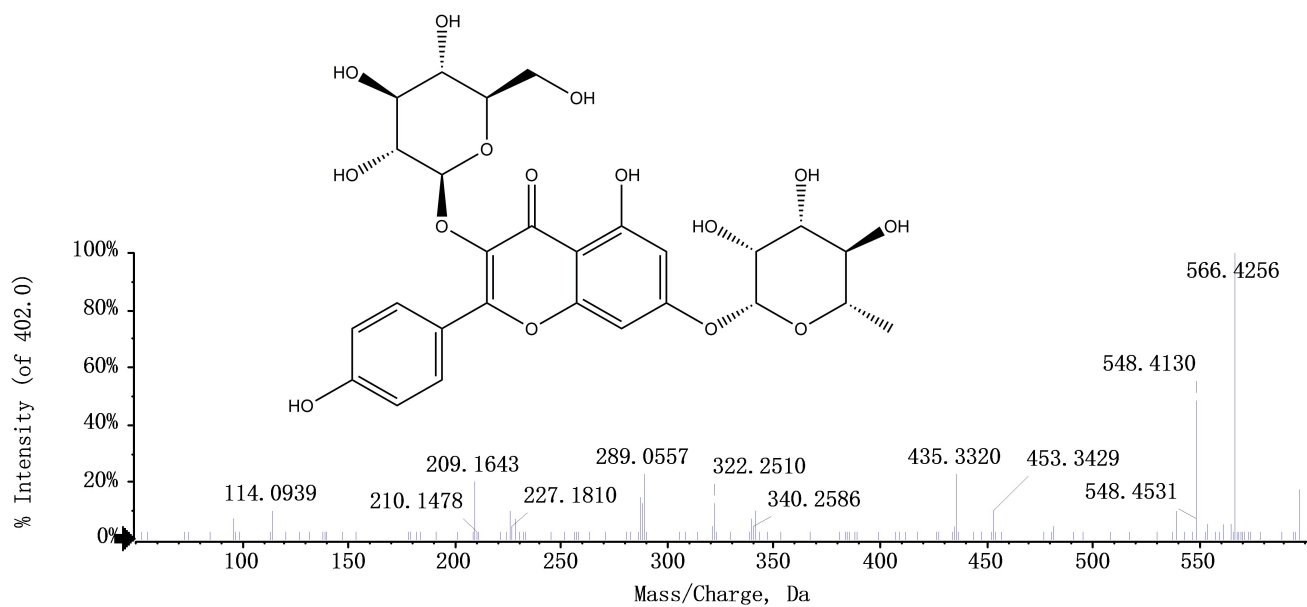


Figure S19 The positive MS/MS spectra of compound 19

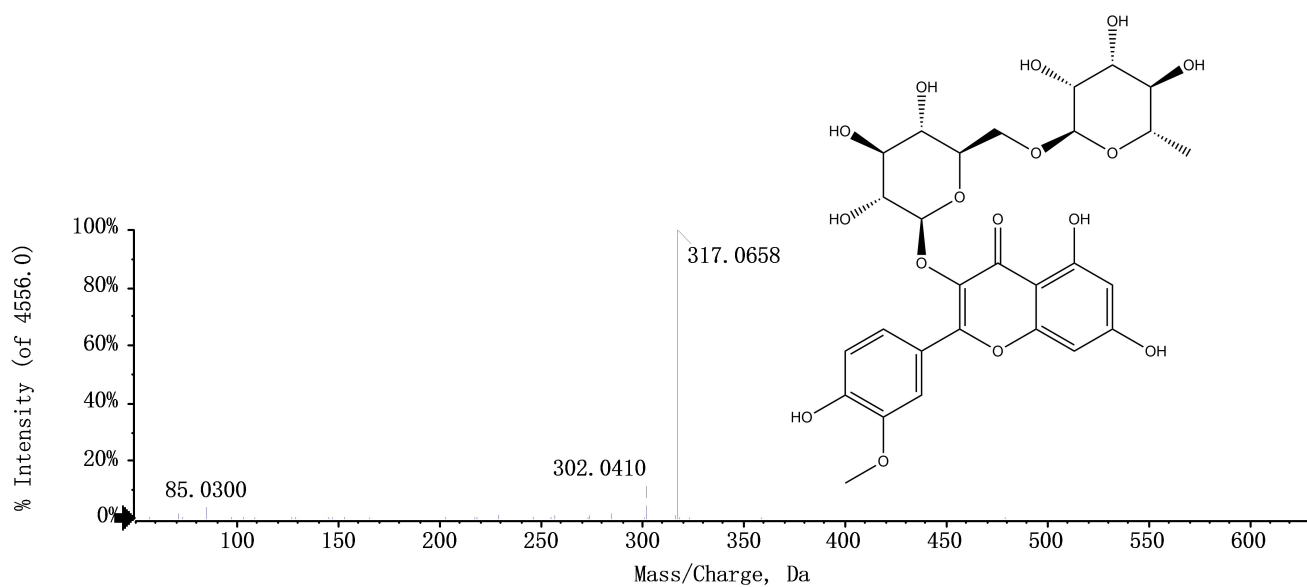


Figure S20A The positive MS/MS spectra of compound 20

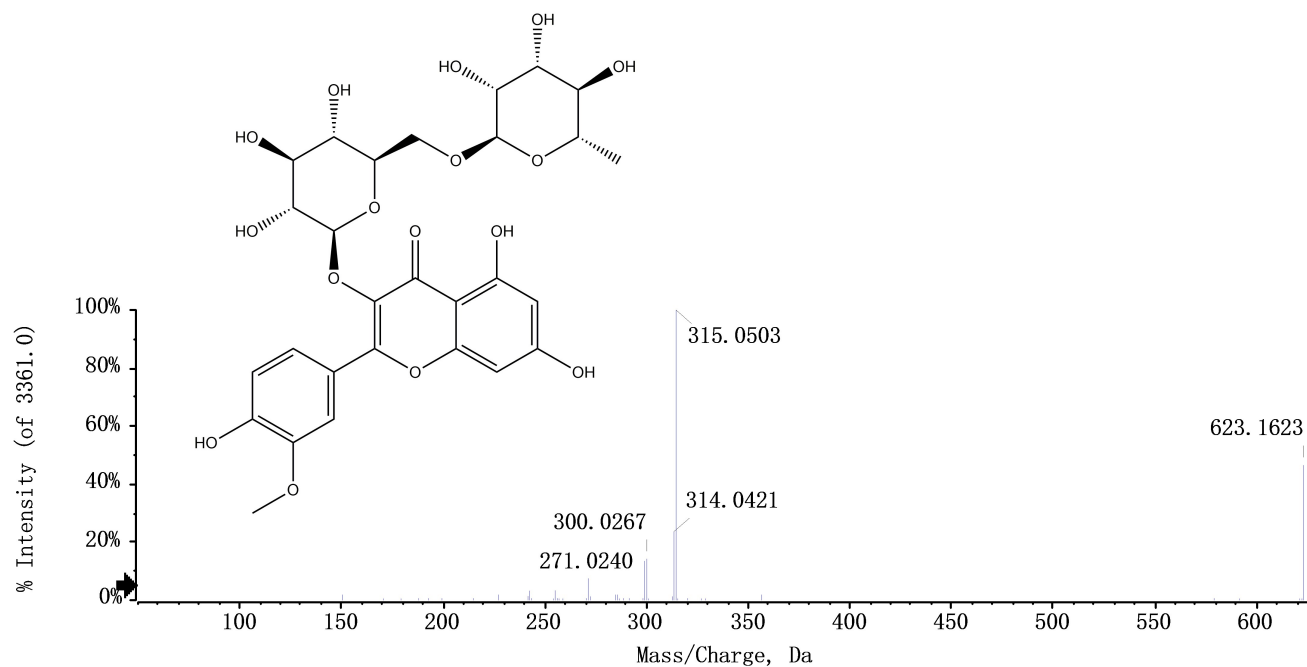


Figure S20B The negative MS/MS spectra of compound 20

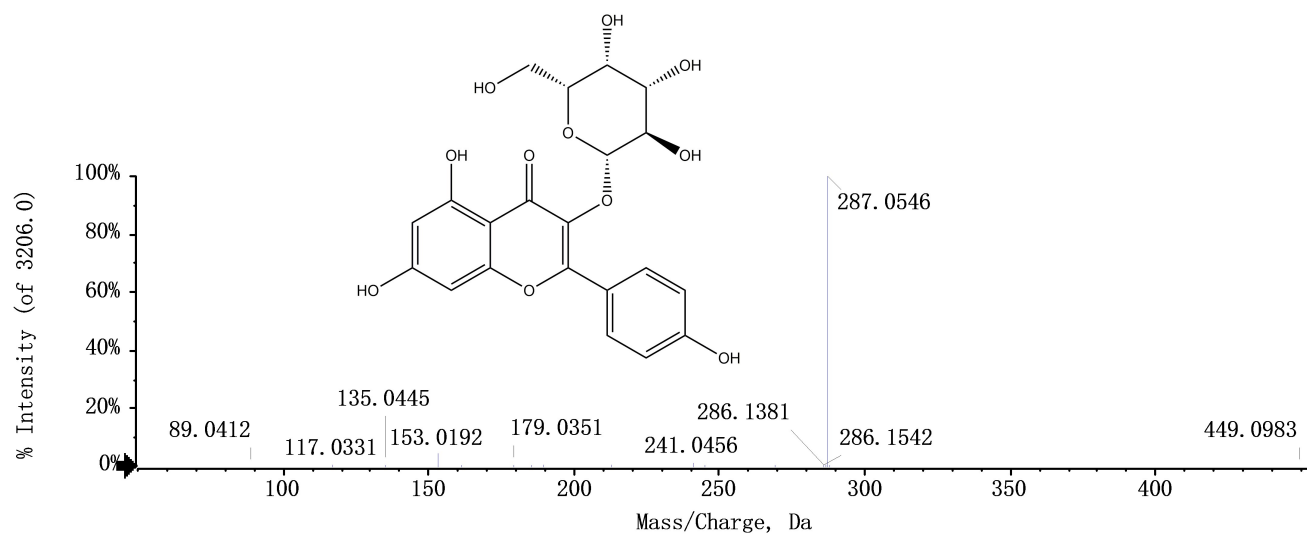


Figure S22A The positive MS/MS spectra of compound 22

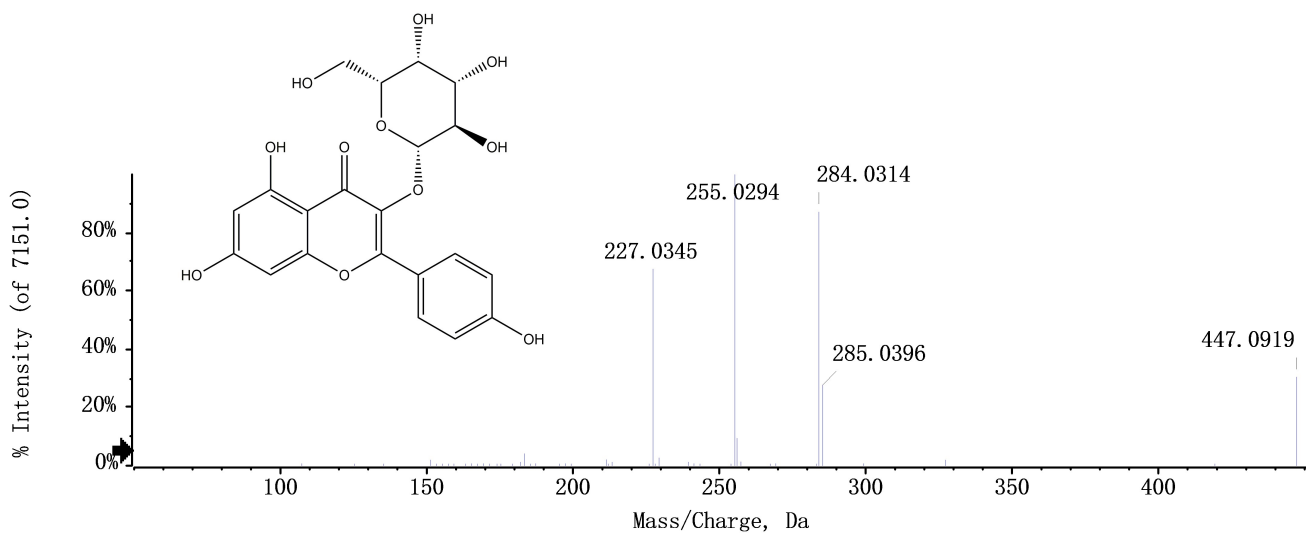


Figure S22B The negative MS/MS spectra of compound 22

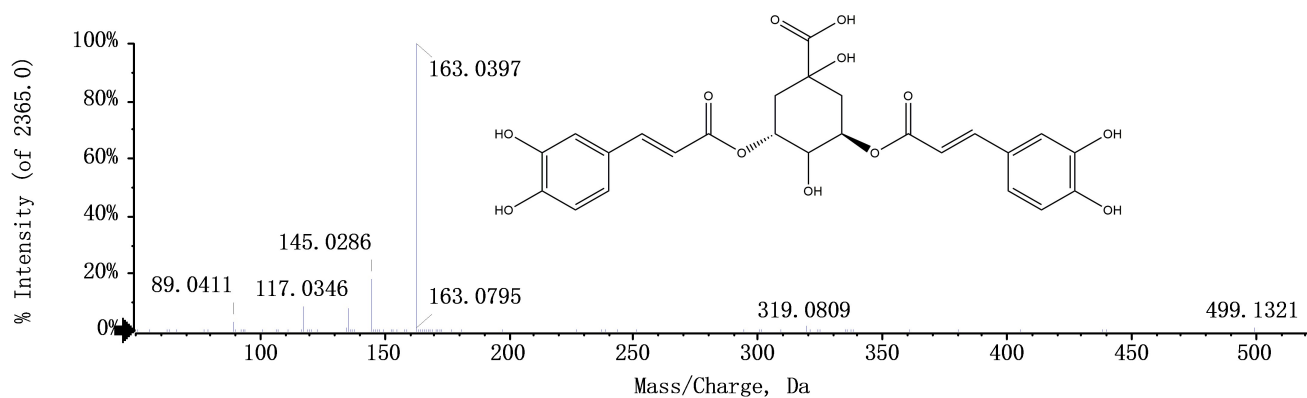


Figure S23A The positive MS/MS spectra of compound 23

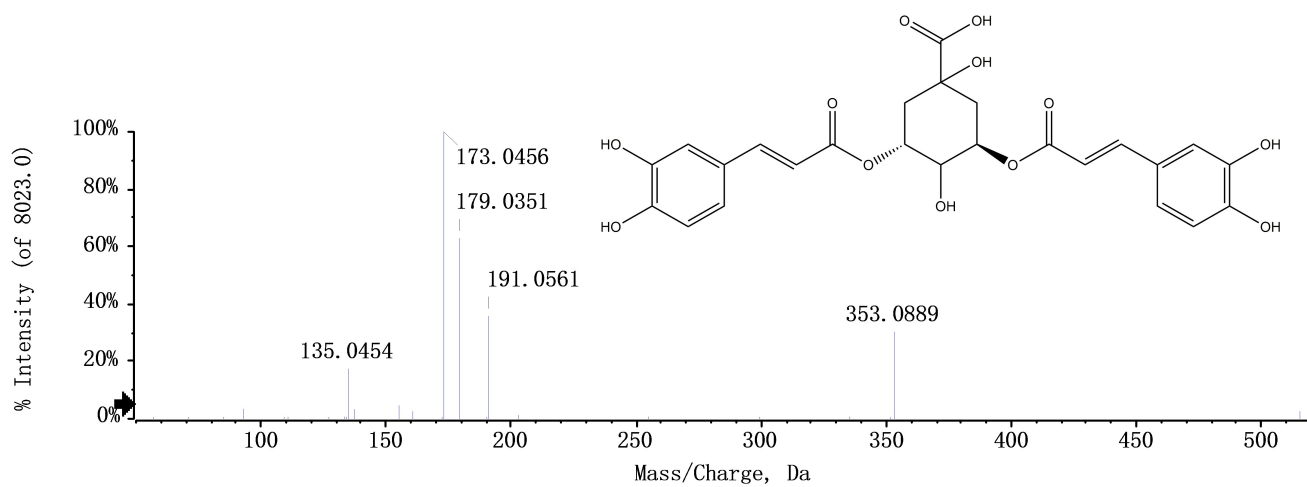


Figure S23B The negative MS/MS spectra of compound 23

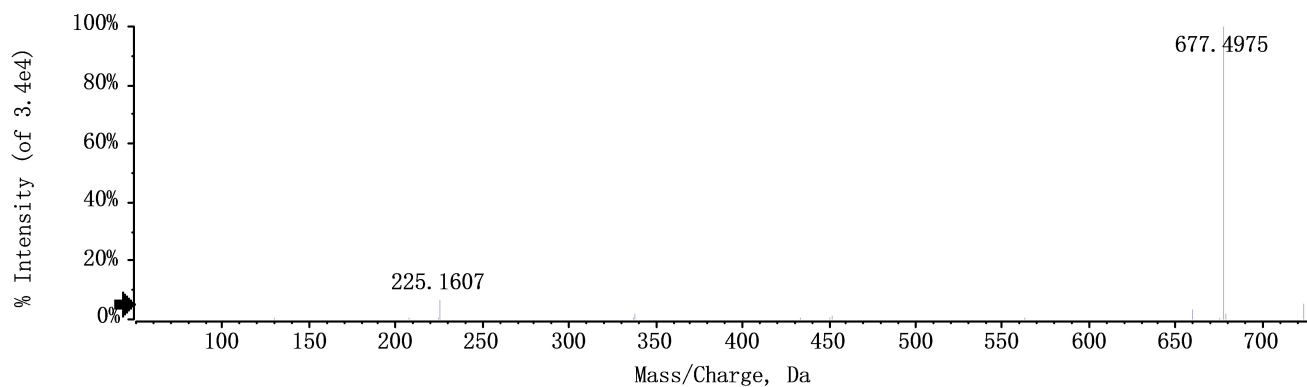


Figure S25 The negative MS/MS spectra of compound 25

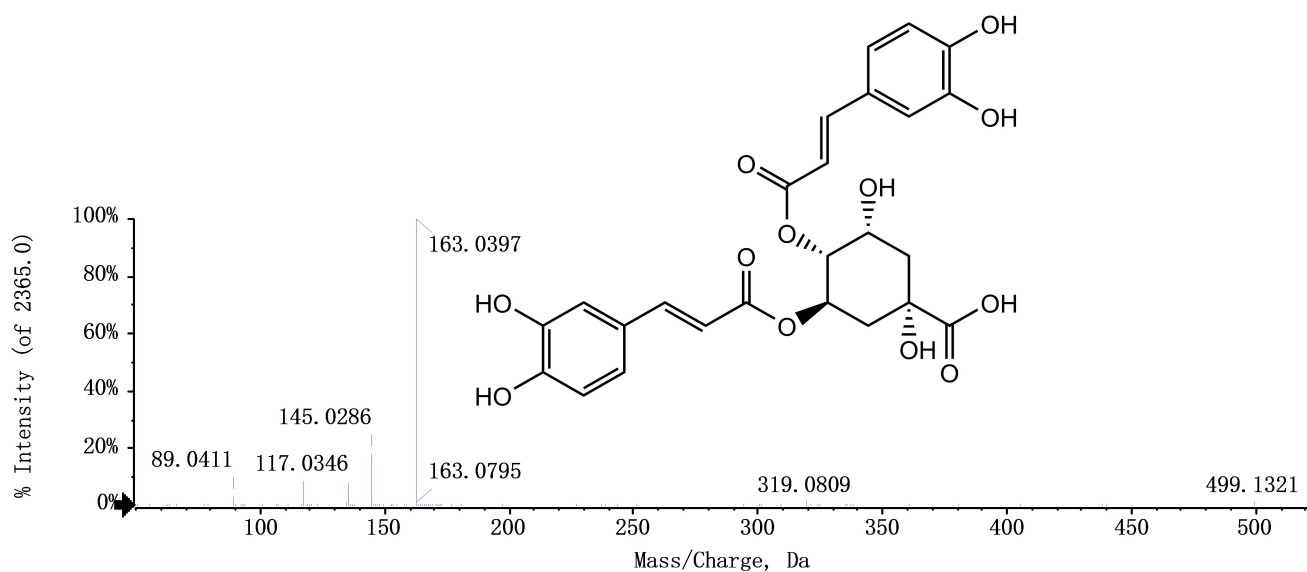


Figure S26 The positive MS/MS spectra of compound 26

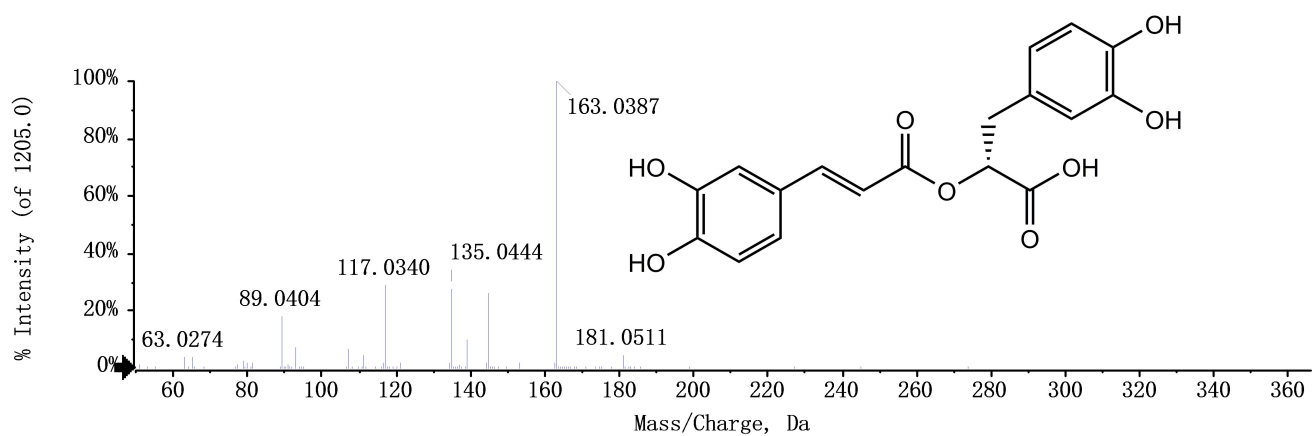


Figure S27A The positive MS/MS spectra of compound 27

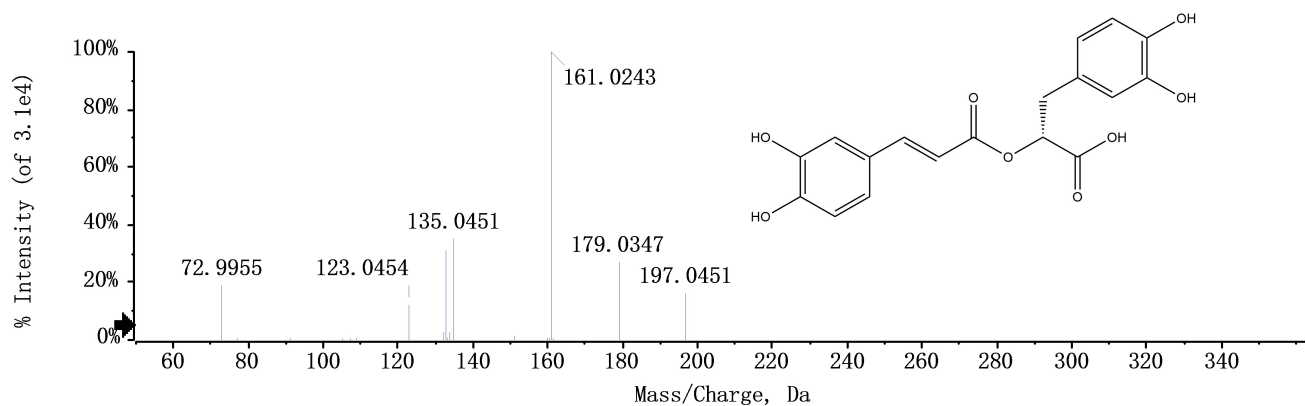


Figure S27B The negative MS/MS spectra of compound 27

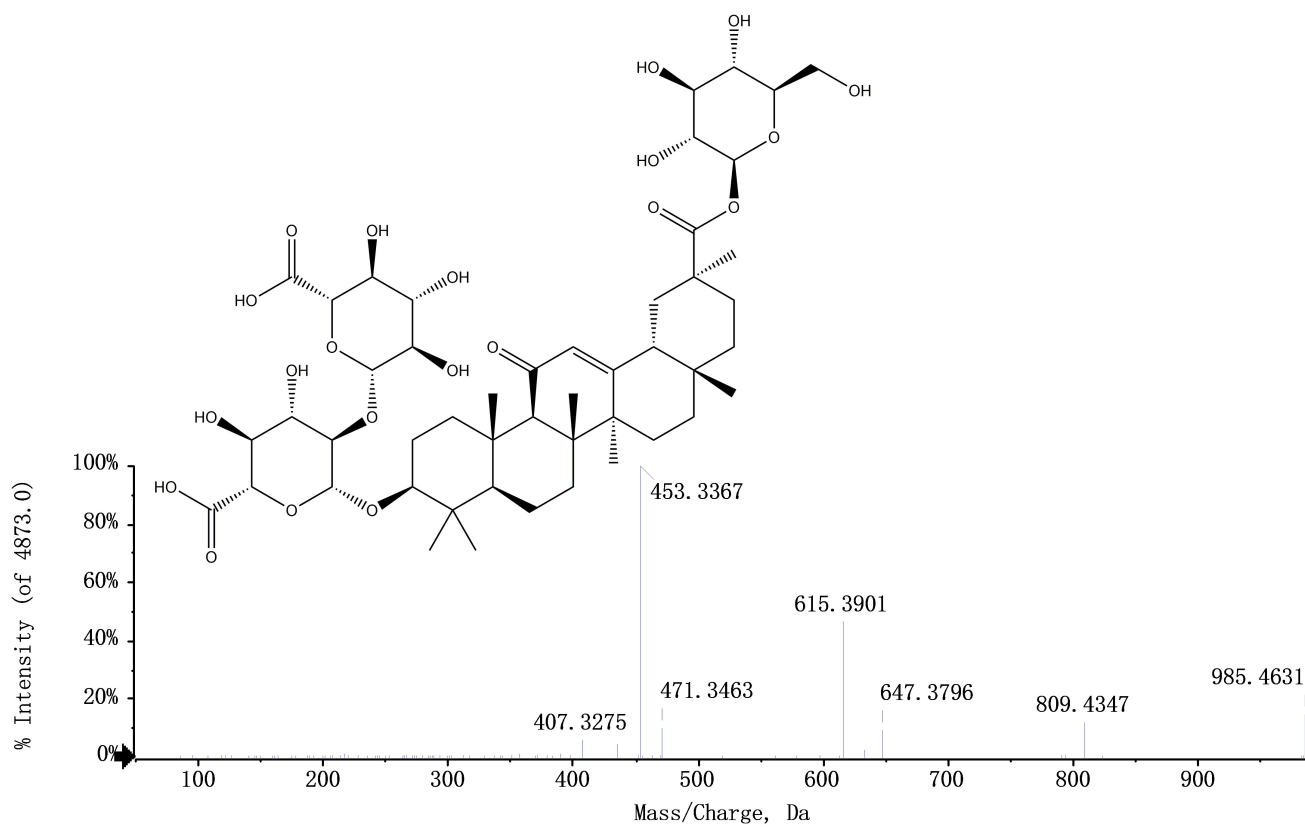


Figure S33A The positive MS/MS spectra of compound 33

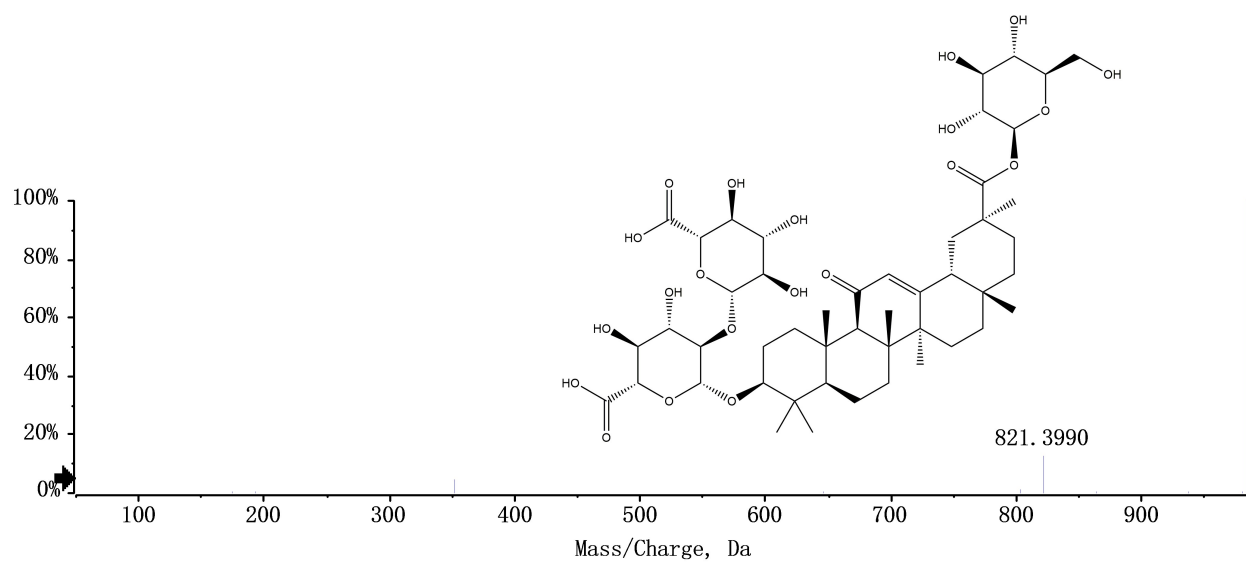


Figure S33B The negative MS/MS spectra of compound 33

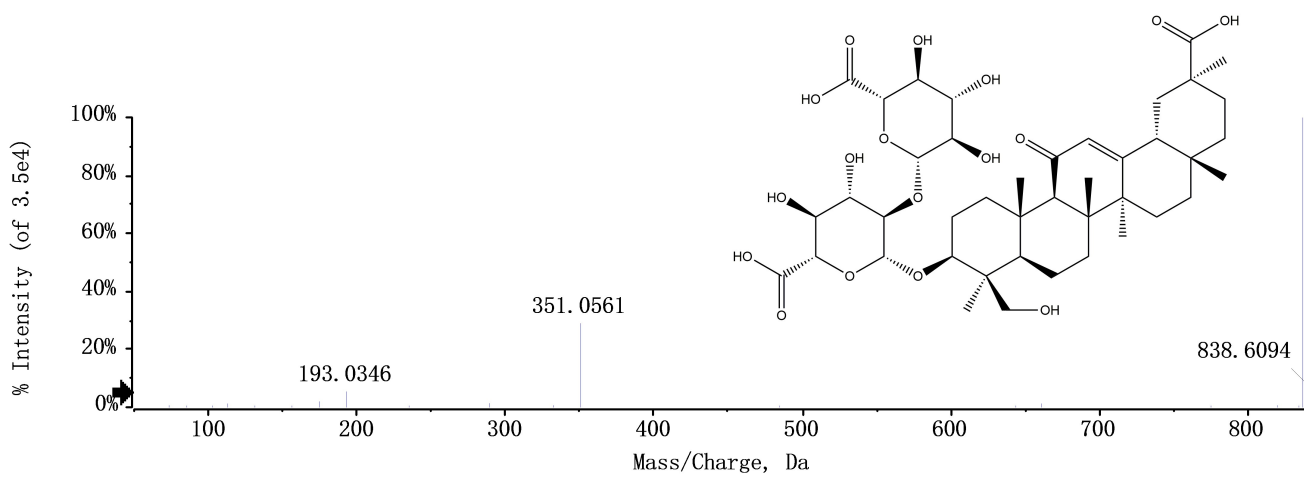


Figure S35 The negative MS/MS spectra of compound 35

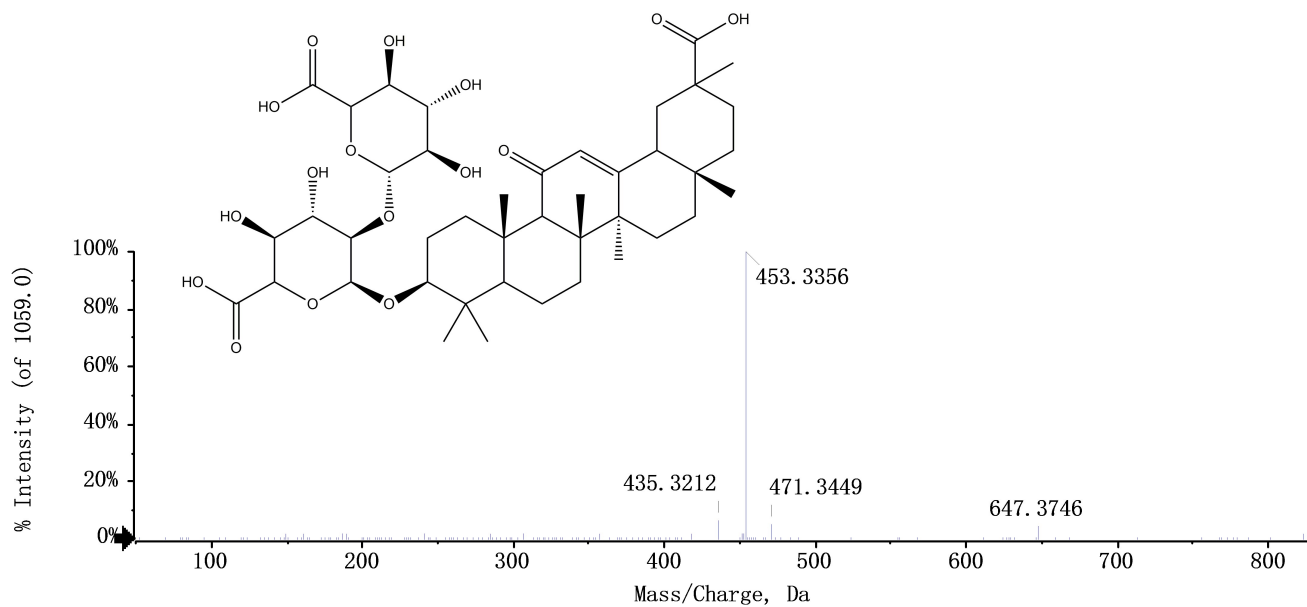


Figure S36A The positive MS/MS spectra of compound 36

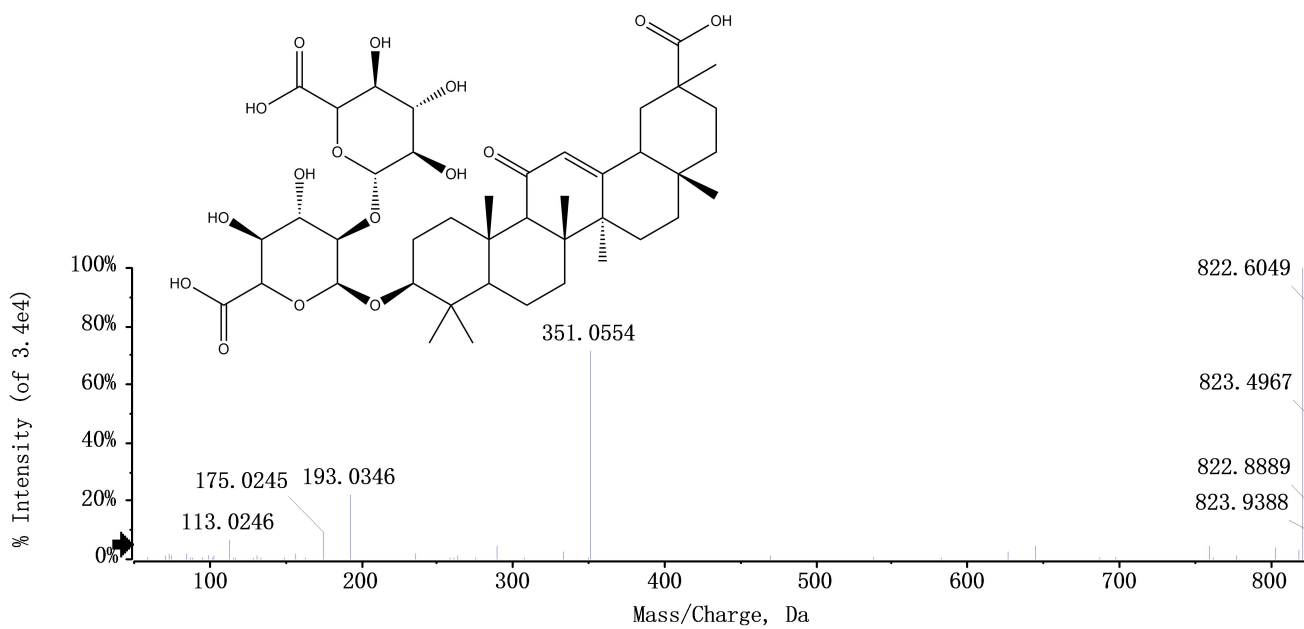


Figure S36B The negative MS/MS spectra of compound 36