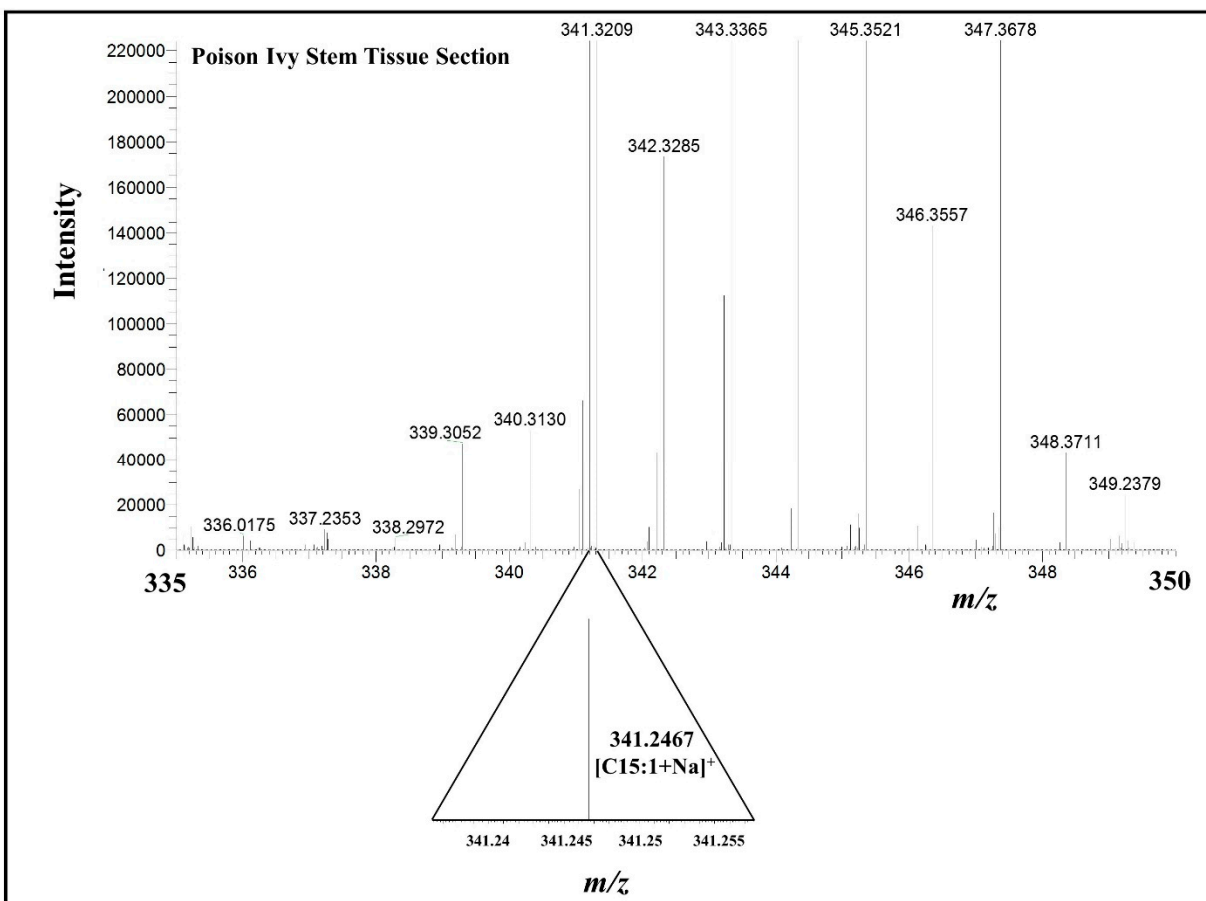


**Figure S1.** MALDI-MSI spectrum of the Japanese lacquer tree extract within an  $m/z$  range of 335-350. An example of MALDI-MSI spectrum of the Japanese lacquer tree extract within an  $m/z$  range of 335-350 with a region zoomed in to show  $m/z$  of 341.2477 corresponding to the sodium adduct of the C15:1 urushiol congener. The MALDI-MSI data were collected in profile mode for the Japanese lacquer tree extract.



**Figure S2.** MALDI-MSI spectrum of poison ivy stem tissue section within an  $m/z$  range of 335-350. An example of MALDI-MSI spectrum of poison ivy stem tissue section within an  $m/z$  range of 335-350 with a region zoomed in to show  $m/z$  of 341.2467 corresponding to the sodium adduct of the C15:1 urushiol congener. The MALDI-MSI data were collected in centroid mode for the poison ivy stem tissue section.