

# Supplementary Materials: A Flavone Constituent from *Myoporum bontioides* Induces M-phase Cell Cycle Arrest of MCF-7 Breast Cancer Cells

Jing-Ru Weng, Li-Yuan Bai, Wei-Yu Lin, Chang-Fang Chiu, Yu-Chang Chen, Shi-Wei Chao, and Chia-Hsien Feng

Figure		Page
S1	<sup>1</sup> H NMR spectrum (600 MHz, CD <sub>3</sub> OD) of compound <b>1</b>	2
S2	<sup>13</sup> C NMR spectrum (150 MHz, CD <sub>3</sub> OD) of compound <b>1</b>	3
S3	HMQC spectrum of compound <b>1</b>	4
S4	HMBC spectrum of compound <b>1</b>	5
S5	NOESY spectrum of compound <b>1</b>	6

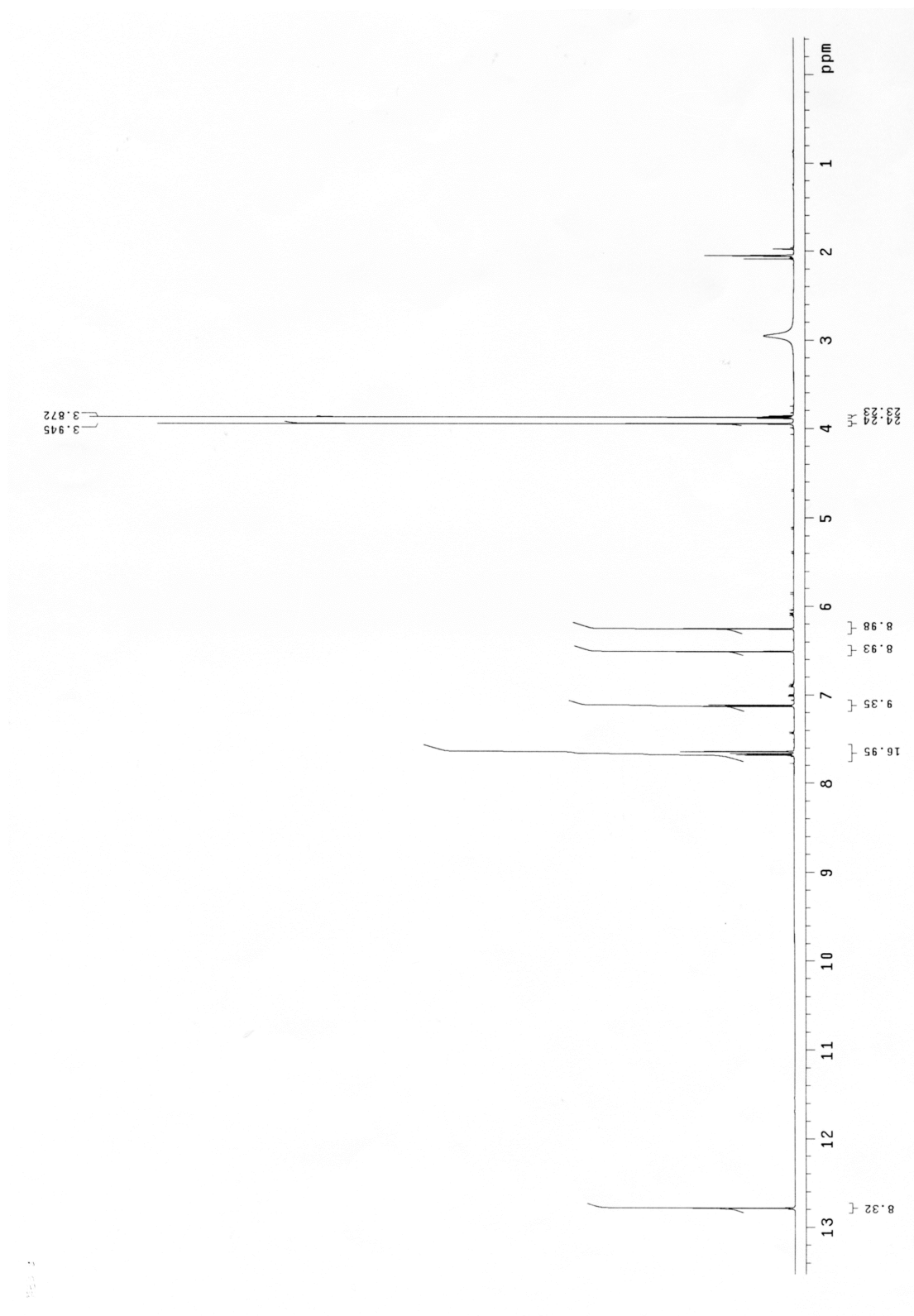


Figure S1.  $^1\text{H}$  NMR spectrum (600 MHz,  $\text{CD}_3\text{OD}$ ) of compound **1**

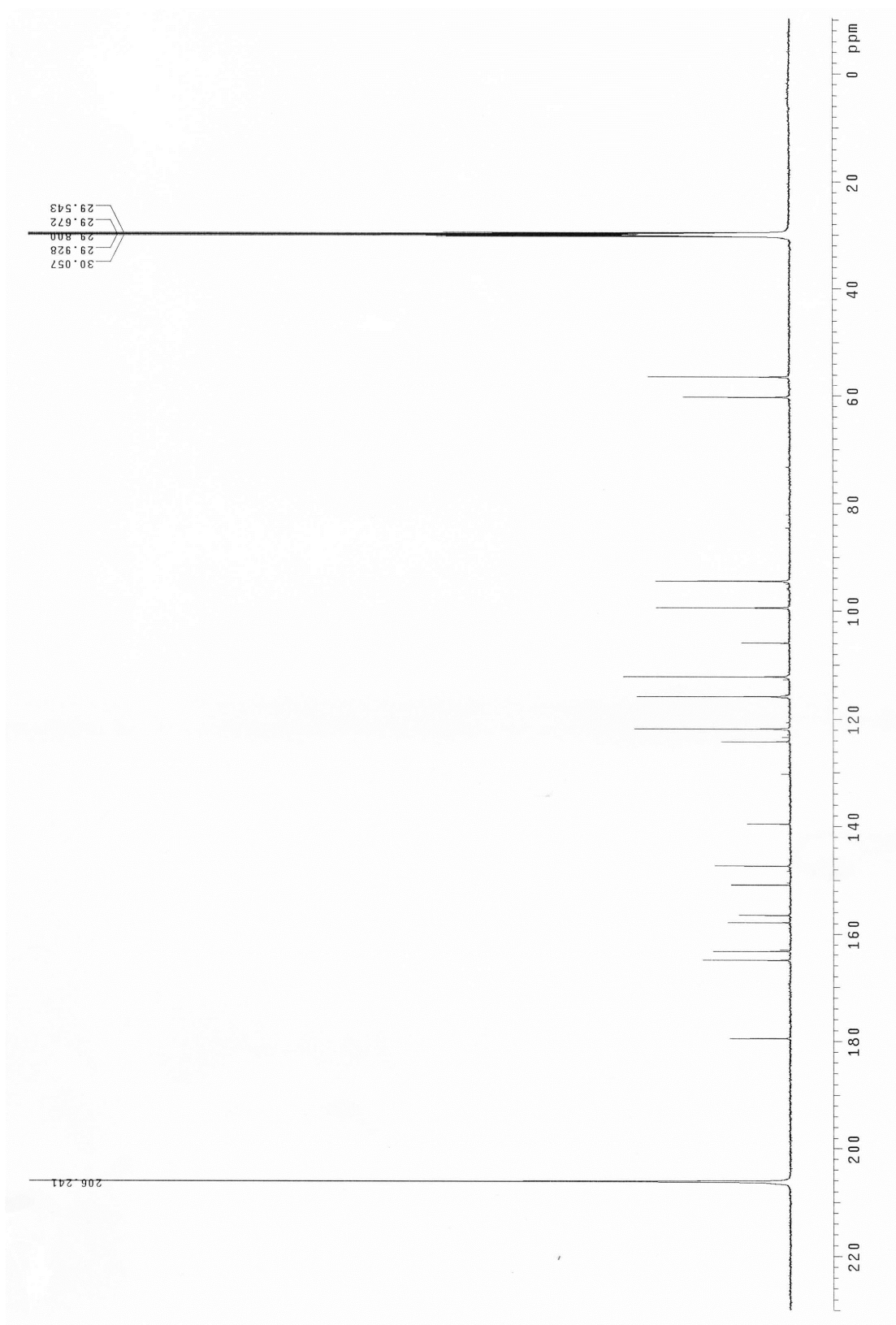


Figure S2.  $^{13}\text{C}$  NMR spectrum (150 MHz,  $\text{CD}_3\text{OD}$ ) of compound **1**

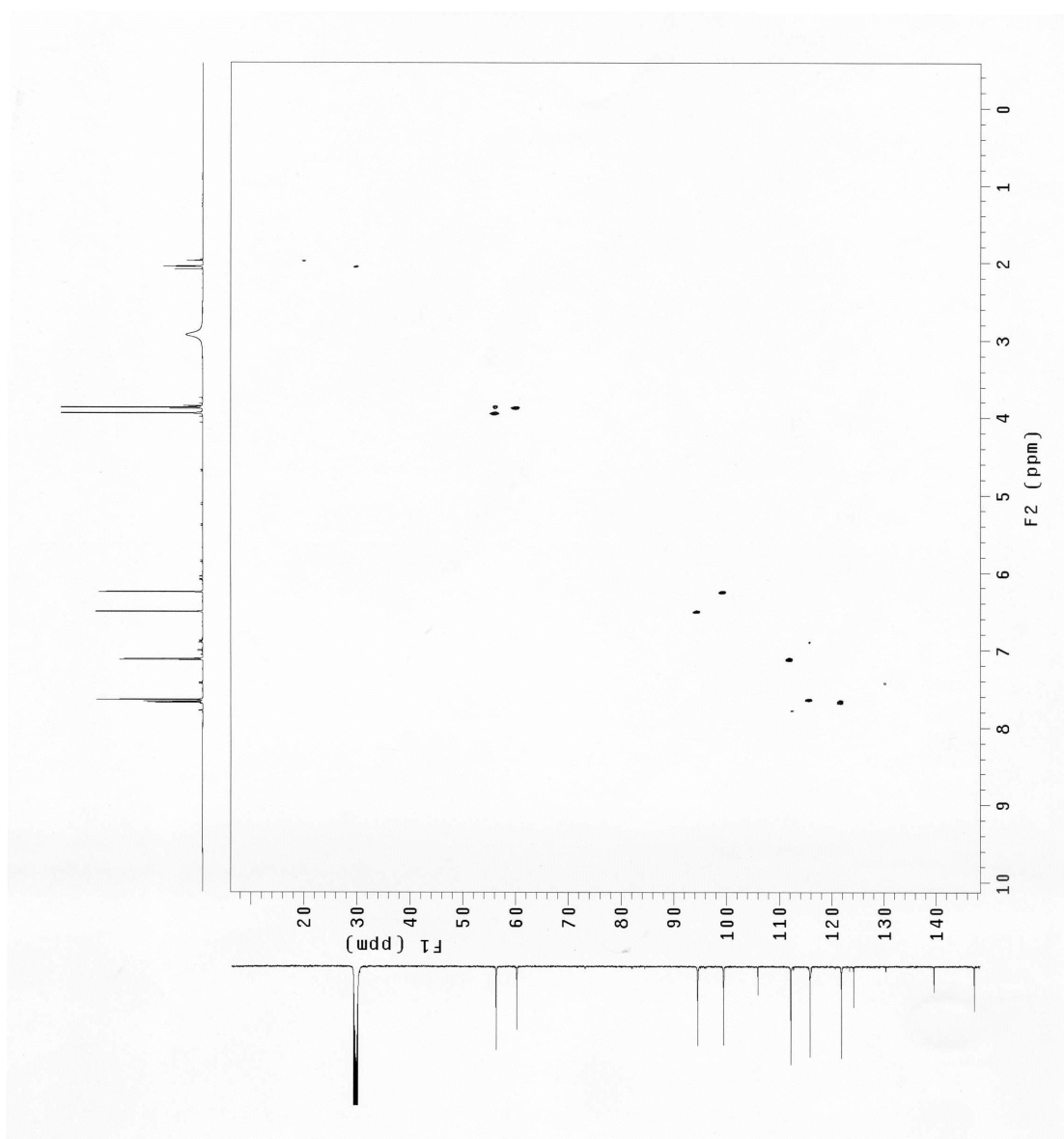


Figure S3. HMQC spectrum of compound **1**

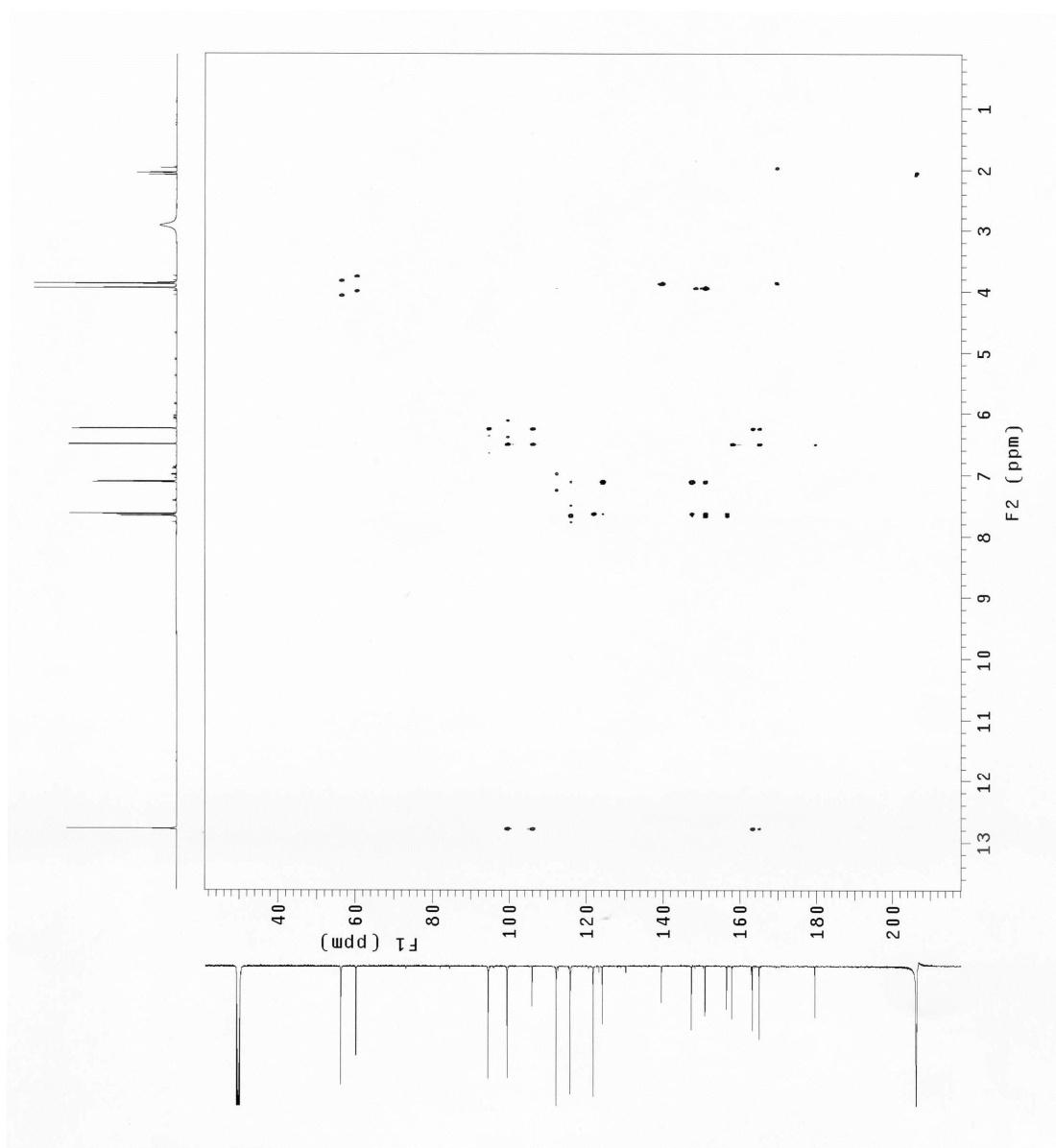


Figure S4. HMBC spectrum of compound **1**

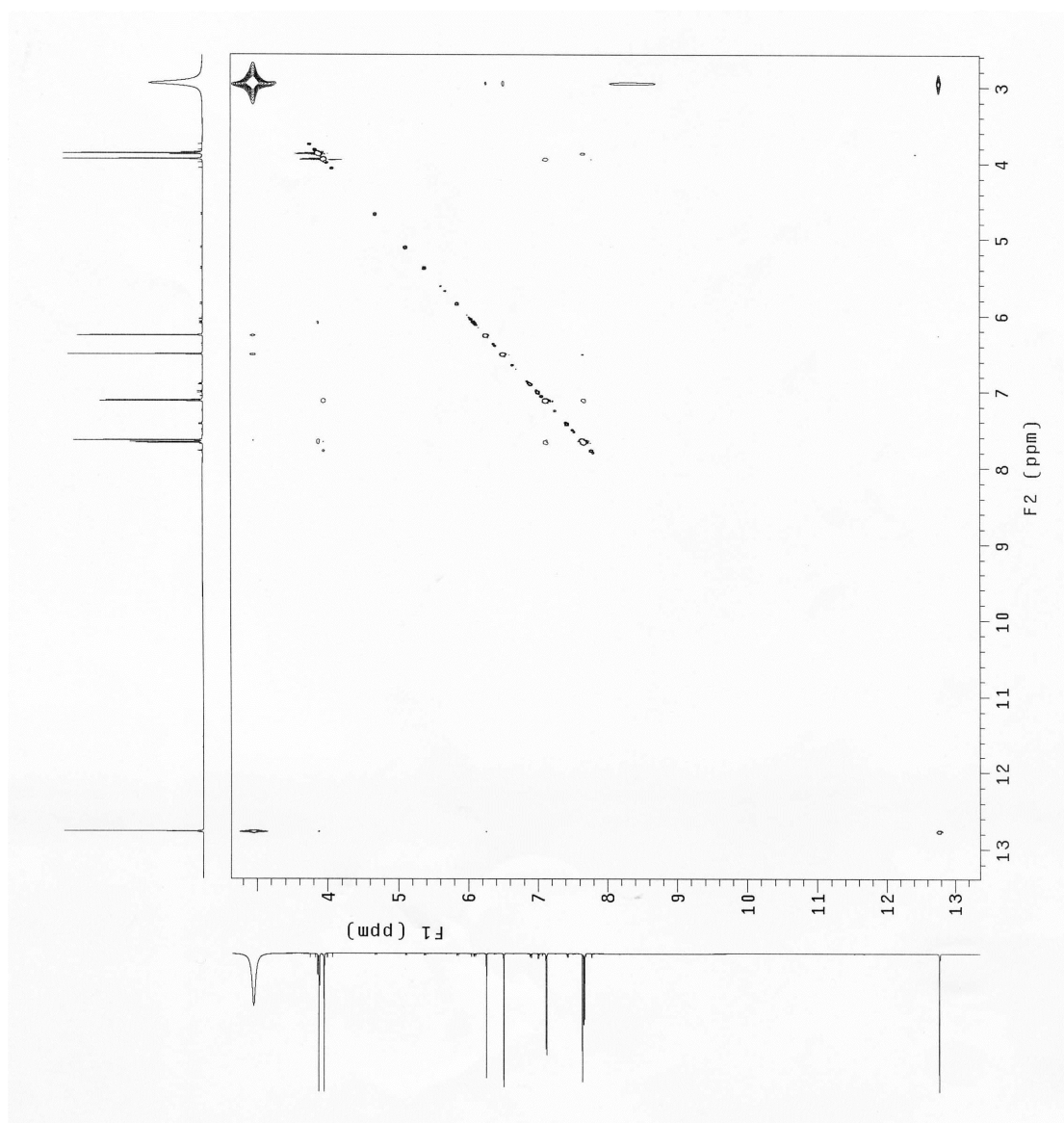


Figure S5. NOESY spectrum of compound **1**