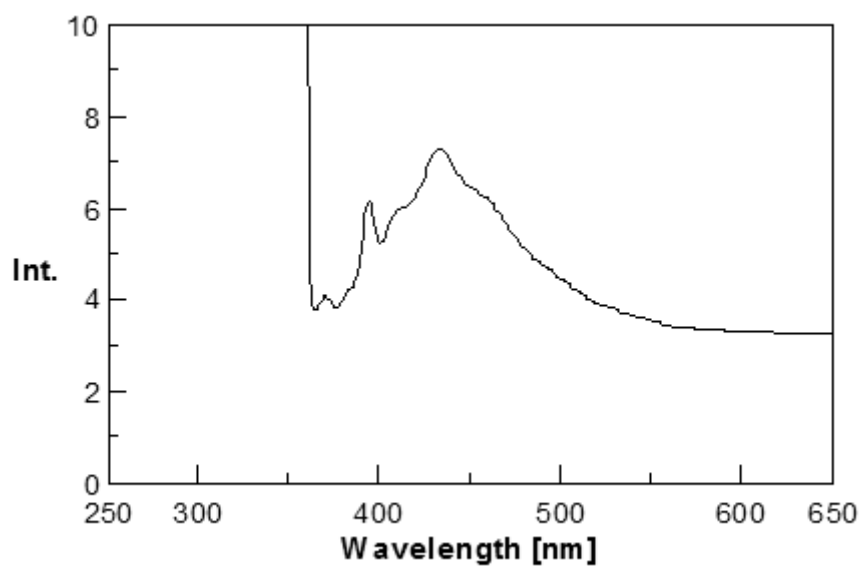


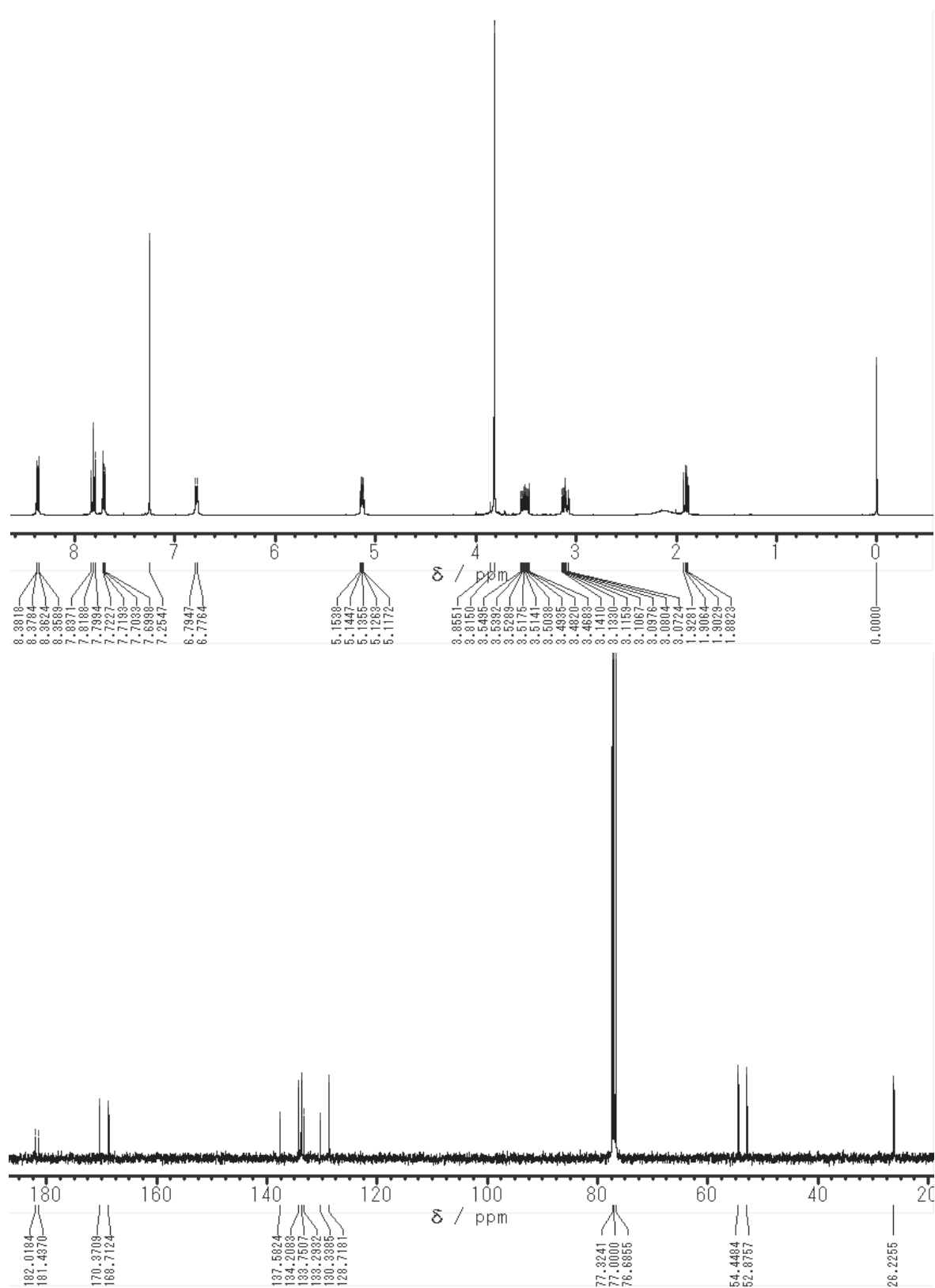
Supplementary Materials

Fluorescence spectra of 7.

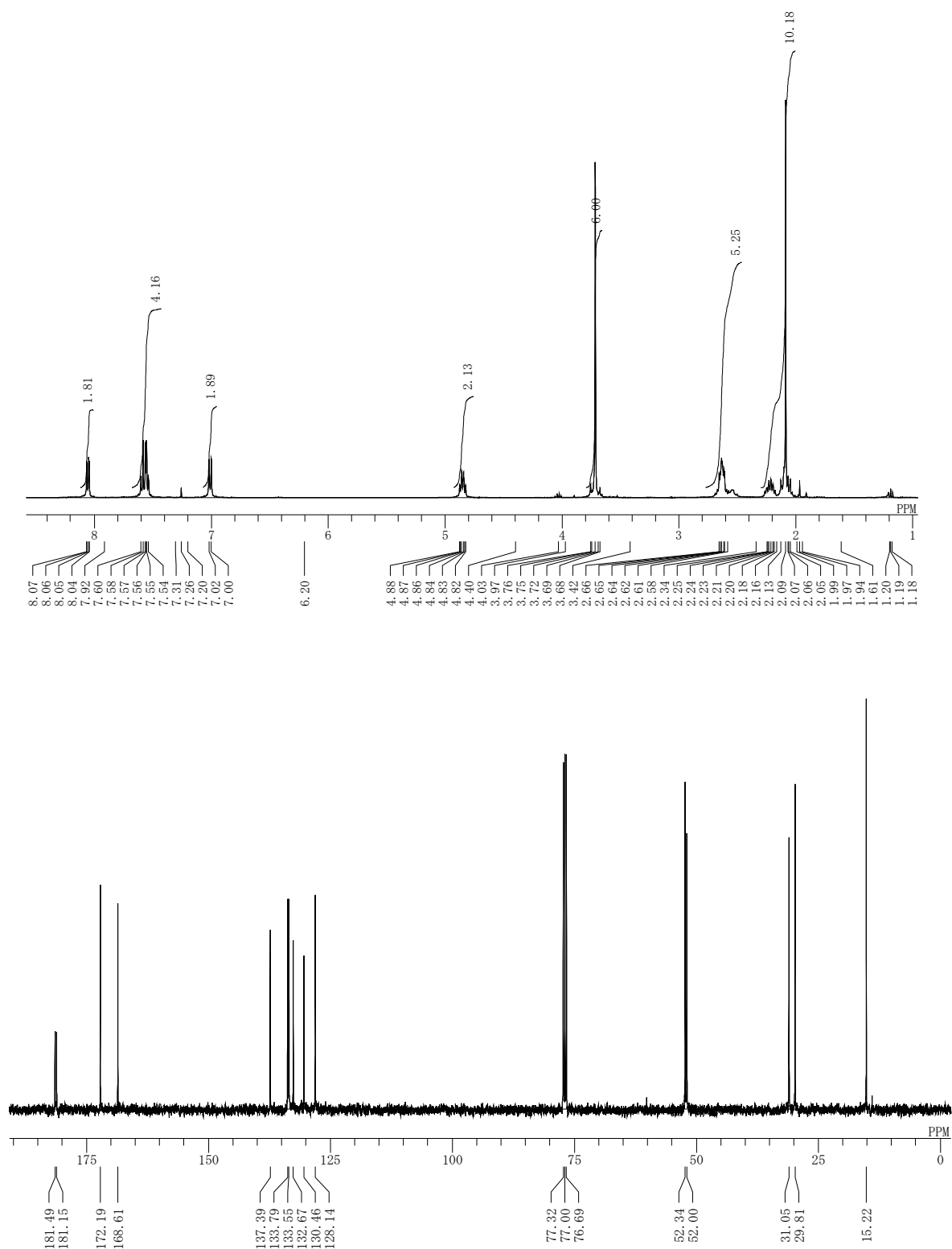
Fluorescence spectrum ($\lambda_{\text{ex}} = 350 \text{ nm}$)



¹H- and ¹³C-NMR spectra of 7.



¹H- and ¹³C-NMR spectra of 10.



^1H - and ^{13}C -NMR spectra of 11.

