

Supplementary Materials

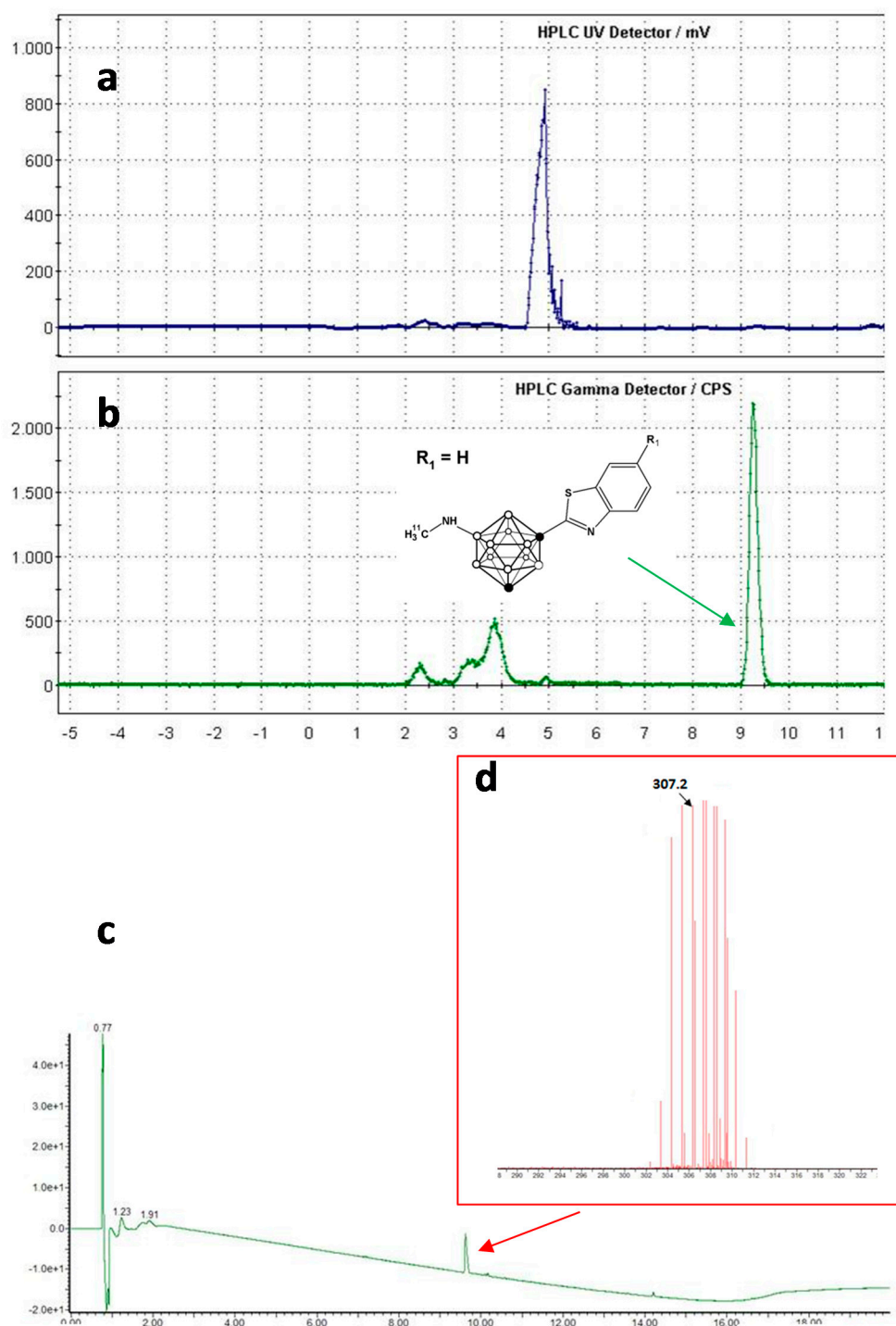


Figure S1. (a,b) Chromatographic profiles corresponding to the purification of $[^{11}\text{C}]\mathbf{15}$: (a) UV detector and (b) radiometric detector. The collected fraction is indicated with an arrow in the radiometric profile; (c) chromatographic profile corresponding to LC-MS analysis of pure $[^{11}\text{C}]\mathbf{15}$ after complete decay; (d) MS spectrum for maximum intensity peak.

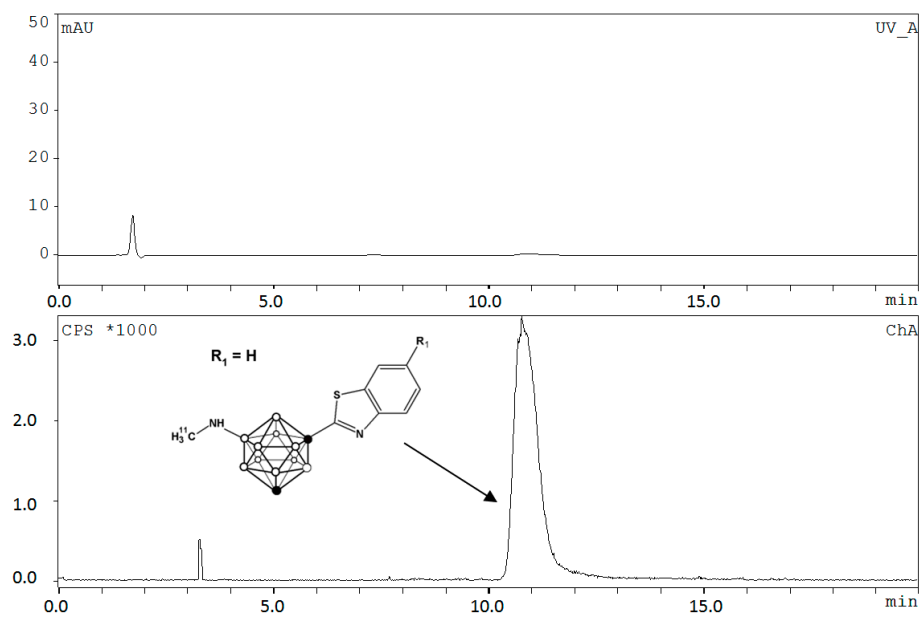


Figure S2. Chromatographic profiles corresponding to the quality control of $[^{11}\text{C}]15$: UV detector (top) and radiometric detector (bottom).

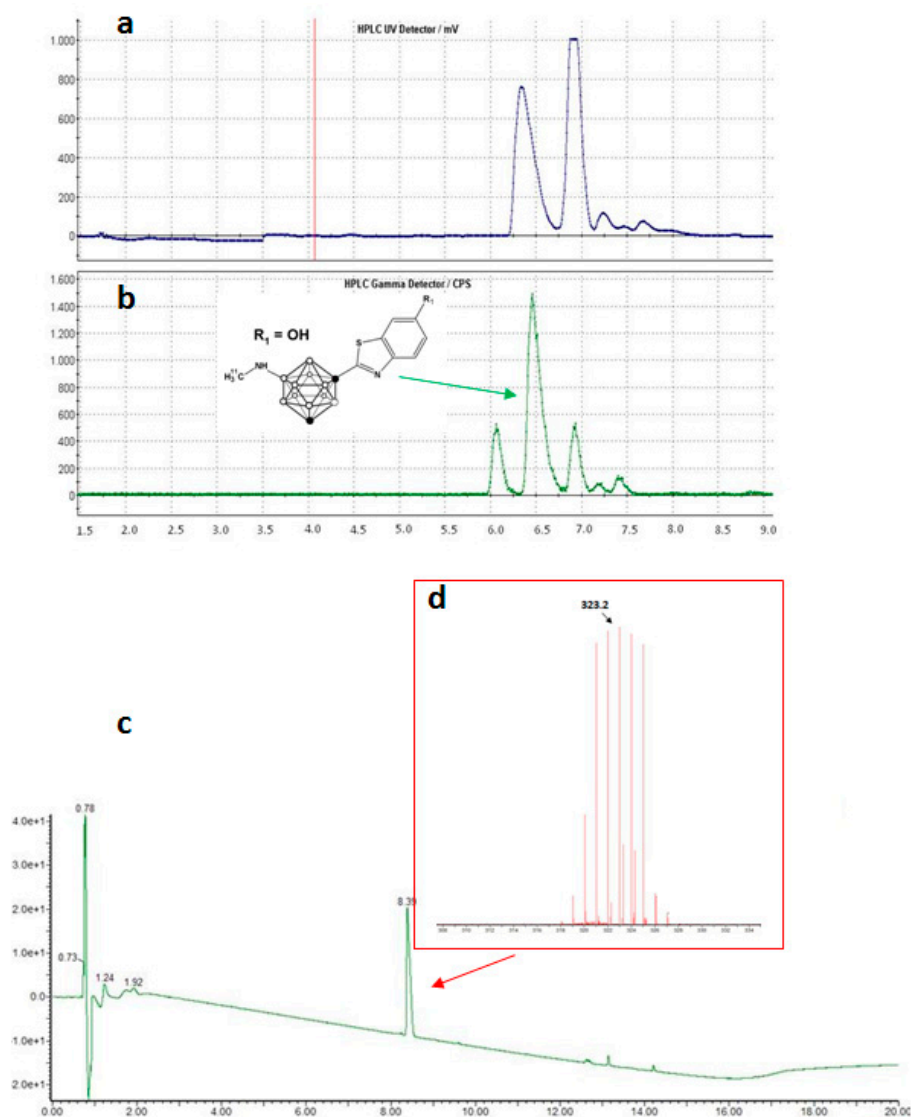


Figure S3. (a,b) Chromatographic profiles corresponding to the purification of $[^{11}\text{C}]\mathbf{16}$: (a) UV detector and (b) radiometric detector. The collected fraction is indicated with an arrow in the radiometric profile; (c) chromatographic profile corresponding to LC-MS analysis of pure $[^{11}\text{C}]\mathbf{16}$ after complete decay; (d) MS spectrum for maximum intensity peak.

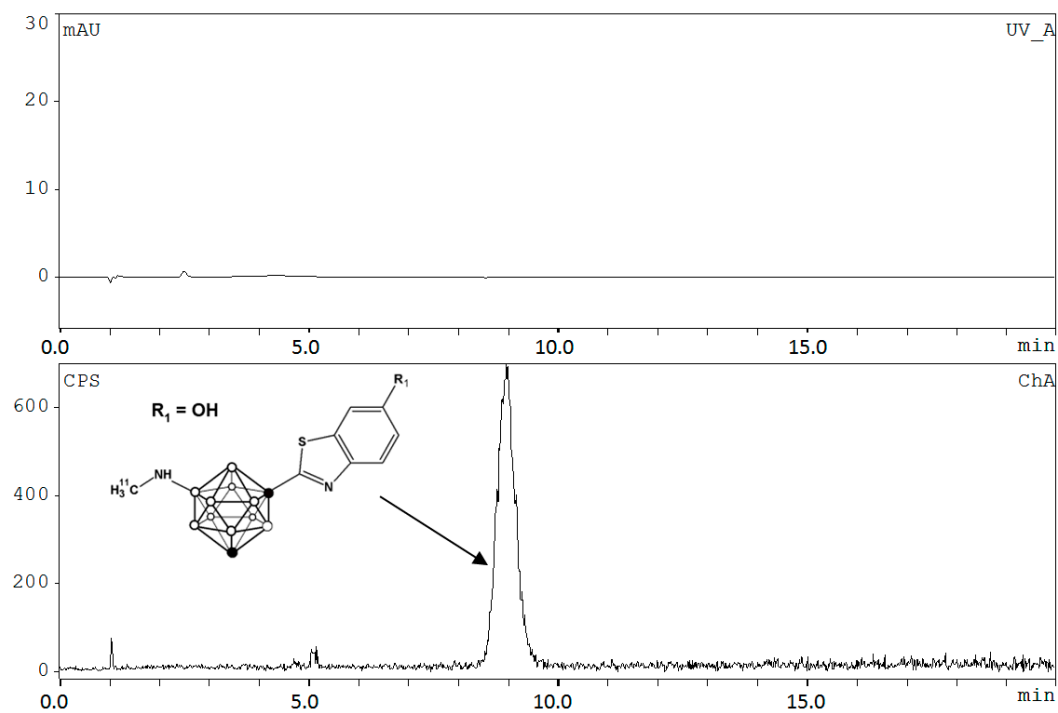


Figure S4. Chromatographic profiles corresponding to the quality control of $[^{11}\text{C}]16$: UV detector (top) and radiometric detector (bottom).