

Supplementary Materials

Figure S1. Carbon labelling of (A) $\phi_3\text{G0(N)}$, (B) G0.5(N) and (C) $\text{Phe}_3\text{G1(N)}$.

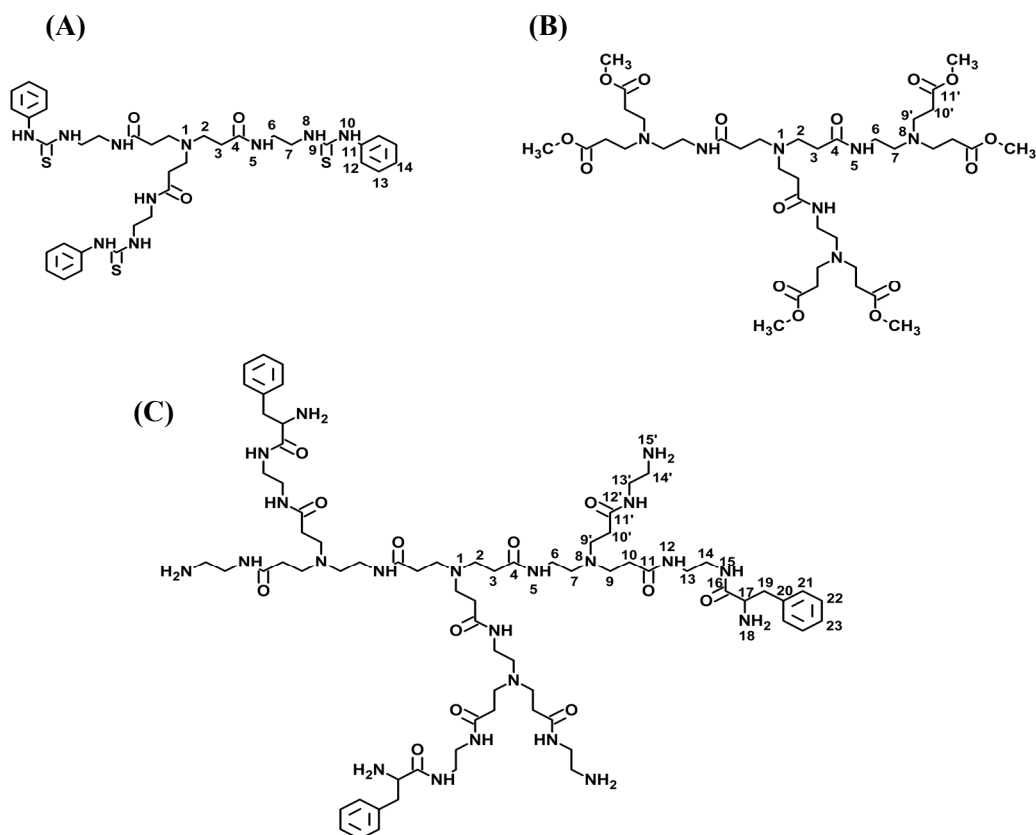


Figure S2. Positive ion ESI-MS/MS mass spectrum of $[\phi_3\text{G0(N)}+\text{H}]^+$ and the corresponding fragmentation pattern.

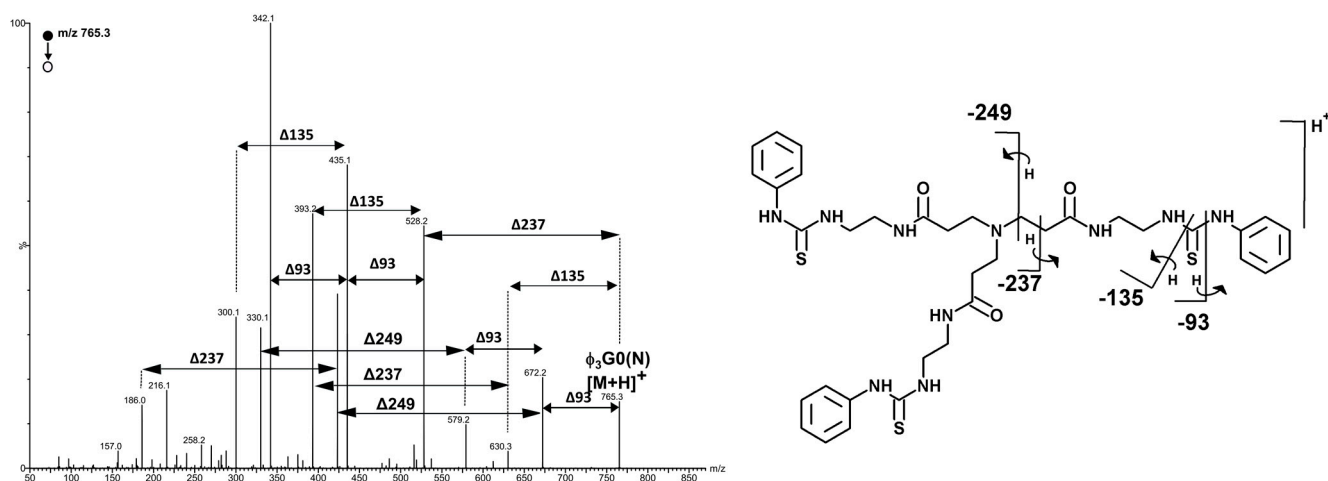


Figure S3. ESI-MS/MS mass spectrum Phe₂G1(N) (A) and the corresponding fragmentation pattern (B).

