


Article

Inspecting Non-Perturbative Contributions to the Entanglement Entropy via Wavefunctions

Arpan Bhattacharyya ¹ , Ling-Yan Hung ^{1,2,3}, Pak Hang Chris Lau ^{4,*} and Si-Nong Liu ¹

¹ Center for Field Theory and Particle Physics, Department of Physics, Fudan University, Shanghai 200433, China; bhattacharyya.arpan@yahoo.com (A.B.); elektron.janethung@gmail.com (L.-Y.H.); sinong.liu@uky.edu (S.-N.L.)

² Department of Physics, State Key Laboratory of Surface Physics, Fudan University, Shanghai 200433, China

³ Collaborative Innovation Center of Advanced Microstructures, Nanjing University, Nanjing 210093, China

⁴ Yukawa Institute for Theoretical Physics, Kyoto University, Kyoto 606-8502, Japan

* Correspondence: phcl2@mit.edu

Received: 14 November 2017; Accepted: 5 December 2017; Published: 7 December 2017

Abstract: In this paper, we would like to systematically explore the implications of non-perturbative effects on entanglement in a many body system. Instead of pursuing the usual path-integral method in a singular space, we attempt to study the wavefunctions in detail. We begin with a toy model of multiple particles whose interaction potential admits multiple minima. We study the entanglement of the true ground state after taking the tunneling effects into account and find some simple patterns. Notably, in the case of multiple particle interactions, entanglement entropy generically decreases with increasing number of minima. The knowledge of the subsystem actually increases with the number of minima. The reduced density matrix can also be seen to have close connections with graph spectra. In a more careful study of the two-well tunneling system, we also extract the exponentially-suppressed tail contribution, the analogue of instantons. To understand the effects of multiple minima in a field theory, we are inspired to inspect wavefunctions in a toy model of a bosonic field describing quasi-particles of two different condensates related by Bogoliubov transformations. We find that the area law is naturally preserved. This is probably a useful set of perspectives that promise wider applications.

Keywords: entanglement; non-perturbative corrections; many body system

1. Introduction

The study of many body entanglement has given us insights into new phases of matter, leading to a classification of topological orders beyond the Landau paradigm [1–6]. Entanglement entropy has also breathed new life into the study of quantum gravity. Efforts to understand the Ryu–Takayanagi formula [7,8] that computes entanglement entropy in the AdS/CFT correspondence has led to novel perspectives that connect the duality to tensor-networks [9–13]. The latter surprisingly captures many of the salient features of the correspondence. In high energy physics, the default framework has been quantum field theory. Given the importance in understanding the entanglement pattern of a many-body system (Interested readers are referred to [14–27]. The list is by no means complete, and interested readers are encouraged to refer to the references and citations of these papers.), it is thus of fundamental significance to understand what kind of entanglement can be supported by quantum field theory in principle.

As the most broad-stroke qualitative question, it is natural to ask whether the entanglement entropy of the ground state of a local field theory always satisfies an area law. There is overwhelming evidence that this is indeed the case, from both numerical studies and exact calculations in field theories, such as CFTs in 1 + 1 dimensions, free theories and large N theories [28–33], in which the

calculation becomes manageable. There are also perturbative calculations in theories such as ϕ^4 theory [34,35] that provide some insights into the correction to the entanglement entropies from some weak interactions [36,37]. On the other hand, we have the AdS/CFT correspondence that allows one to probe into the strongly-coupled regime of the field theory [8,38].

There are various aspects that still remain unsatisfactory. For one, the corrections included in these computations are predominantly perturbative. Furthermore, the entanglement entropy is a rather crude probe of entanglement. It misses many minute details of the actual pattern of entanglement that could only be explored with a better control of the entanglement spectrum, such as in the classic example of topological orders [39] and more recently, in identifying chaotic states [40]. Moreover, the entanglement entropy has to be computed via the replica trick [28–30], which, given its technical difficulty, easily masks the physics. After all, the calculation does not directly provide insights of entanglement between physical degrees of freedom. Rather, it relies on heavy machinery that introduces singularities into a path-integral. The procedure of regulating subsequent divergences can potentially mask the true underlying physics.

In this paper, we are motivated by the intention of studying non-perturbative contributions to the entanglement entropy and understand, at least in some special contexts, what role they play in the entanglement of the ground state. One of the most important non-perturbative corrections to field theory comes from instantons, which are extra (topologically) non-trivial saddles in the (Euclidean) path-integral. However, it is not entirely obvious how they alter the entanglement structure of the ground state. To address the question, we follow here the more intuitive path of focusing on the wavefunction. It is well understood that instantons describe tunneling events between local minima and that we are only capable of employing perturbation theory systematically around each of these minima. Instantons have been explored in a wide range of theories, from ϕ^4 theories with two minima to Abelian and non-Abelian gauge theories such as the QCD [41–49] with essentially infinitely many minima. In the case of the ϕ^4 theory (in a compact space), instantons describe tunneling events between the two minima [41–43]. In QCD, the study of tunneling allows one to identify the θ -vacua [44–49]. The true ground state is in fact a linear combination of the naive vacua obtained by perturbing around one of the minima of the potential.

Motivated by these considerations, we begin with a study of a simple quantum mechanical problem, in which multiple particles enjoy an interaction potential that has multiple minima. The true ground state is a linear combination of states where each one is a peak around one minimum. In these cases, the reduced density matrix can be obtained explicitly, giving a complete picture of the entanglement structure of the true ground state. Along the way, we find an amusing connection between the spectra of the reduced density matrices and the Cartan matrices of the A_n Lie groups. The relation between these is part of a wider connection between the entanglement spectrum and graph spectra [50–52], where the adjacency matrix of some graphs describes hopping between different states in the reduced density matrix.

Then, we move onto field theory. To borrow the insights obtained from the quantum mechanical problem, we start with the true ground states of a theory with multiple minima after taking tunneling into account. Instead of working directly with instantons, inspired by the true ground states of the quantum mechanical system, we play the same game of writing down linear combinations of states, each of which corresponds to a wavefunction peaked around one of the minima. To do so, we select a reference basis state defined perturbatively around one minimum. This is a complete set of basis states where the perturbative vacuum defined around another minimum can be related to the reference set of states by a Bogoliubov transformation [53–58]. We will demonstrate these explicitly using a set of free bosons in $1 + 1$ dimensions as an example. For ϕ^4 theories, it is natural to work with bosonic excitations around different minima, each of them corresponds to a superconducting condensate [57,58]. Using this method, one could explicitly see that the area law is expected to be preserved, even with instanton corrections, as also observed using direct field theoretic computation employing the replica trick [59].

The main lesson we have learned in these attempts is that the condensed matter folklore that the ground states of local theories respect the area law indeed remains true in each of the examples even as we include non-perturbative corrections.

2. Toy Example of a Two-Particle System

Let us begin with a warm-up exercise studying the entanglement between two particles, located at x_1 and x_2 , interacting via a potential $V(x_1 - x_2)$. The two-particle time-independent Schrödinger equation is given by [60]:

$$H |\Psi_n(x_1, x_2)\rangle = E_n |\Psi_n(x_1, x_2)\rangle, \quad (1)$$

with the Hamiltonian:

$$H = -\frac{1}{2m_1} \partial_{x_1}^2 - \frac{1}{2m_2} \partial_{x_2}^2 + V(x_1 - x_2). \quad (2)$$

To illustrate the idea, we will take $V(x)$ to be a function with two minima located at $x = x_1 - x_2 = 0$ and $x = a$. The center of mass behaves like a free particle. Suppose the potential is extremely narrow and deep near $x = 0, a$, and that $V(0) = V(a) = 0$, then the ground state in the center of mass frame is simply given by a wavefunction that is an equal weighted sum of delta functions peaking at $x = 0$ and $x = a$. The low-lying eigenfunctions take the form,

$$|\Psi_k(x_1, x_2)\rangle = \frac{\mathcal{N}}{\sqrt{2}} \sum_{x_1, x_2} e^{ik \cdot X} (|x = 0\rangle + |x = a\rangle), \quad X = \frac{m_1 x_1 + m_2 x_2}{(m_1 + m_2)} \quad (3)$$

where \mathcal{N} is the appropriate normalization and the true ground state is located $k = 0$. x_1, x_2 are discretized such that the integrations over x_1 and x_2 are replaced by summations. X is the center of mass coordinate, and $k \cdot X$ denotes the usual scalar product between two vectors.

The density matrix constructed from $|\Psi_k\rangle$ is given by $\rho = |\Psi_k\rangle \langle \Psi_k|$, and the reduced density matrix upon integrating out particle 2 is given by:

$$\rho_1 = \mathcal{N}^2 \sum_{x_1} \left(|x_1\rangle \langle x_1| + \frac{1}{2} (e^{ik \frac{m_1 a}{m_1 + m_2}} |x_1\rangle \langle x_1 + a| + e^{-ik \frac{m_1 a}{m_1 + m_2}} |x_1\rangle \langle x_1 - a|) \right), \quad (4)$$

which explicitly has unit trace.

The off-diagonal terms are essentially hopping terms. Note that for a potential $V(x)$ with a single minimum, the reduced density matrix corresponds to a maximally entangled state where we have no knowledge of particle 2.

Here, we would like to pause and note that at $k = 0$, this reduced density matrix is precisely proportional to the Cartan matrix of A_N , where N is now given by the total number of sites of the discretized system. The Cartan matrix of A_N is equal to $2\mathbb{I} - R$, where R is the adjacency matrix of the Dynkin diagram of A_N defined by (The adjacency matrix R of a graph is defined such that a matrix element R_{ij} counts the number of links connecting the two nodes labeled i and j . For the best beginner's review of graph spectra, see for example, Wikipedia [61] and references therein.):

$$R_{ij} = 1, \quad i = j \pm 1. \quad (5)$$

It is not surprising that the reduced density matrix is connected to graphs. The Cartan matrix is connected to positive definite matrices, which alone is a good reason why it should show up as reduced density matrices. We leave this important and fun topic for future work.

To compute the entanglement entropy, we use the replica trick and compute $\text{Tr} \rho_1^n$. This is a combinatorics problem asking for the number of ways to hop n steps and returning to the starting

point. The number of steps in $+a$ must equal the number of $-a$ steps. Suppose they are m , then we are taking $(n - 2m)$ steps hopping on the same spot. The contribution to $\text{Tr } \rho_1^n$ from such a term is:

$$f_n(m) = \mathcal{N}^{2n} \frac{n!}{m!m!(n-2m)!} \frac{1}{2^{2m}}. \quad (6)$$

Then, altogether, we have:

$$\text{Tr } \rho_1^n = \frac{1}{\mathcal{N}^2} \sum_{m=0}^{\lfloor n/2 \rfloor} f_n(m). \quad (7)$$

This is evaluated formally and gives:

$$\text{Tr } \rho_1^n = \mathcal{N}^{2(n-1)} \left(\frac{2^n \Gamma(n + \frac{1}{2})}{\sqrt{\pi} \Gamma(n + 1)} \right). \quad (8)$$

The entanglement entropy for two minima is:

$$S_{EE}^2 = \lim_{n \rightarrow 1} \frac{\ln(\text{Tr } \rho_1^n)}{1 - n} = -2 \ln(\mathcal{N}) + 1 - \ln(2) - \gamma - \psi^{(0)}\left(\frac{3}{2}\right), \quad (9)$$

where γ and $\psi^{(0)}$ denote the Euler's constant and the digamma function, respectively.

Now, we compare it with the case when there is only one minimum:

$$\rho_1 = \mathcal{N}^2 \sum_{x_1} |x_1\rangle \langle x_1|. \quad (10)$$

The entanglement entropy for a single minimum is:

$$S_{EE}^1 = -2 \ln(\mathcal{N}). \quad (11)$$

Therefore, the change in entanglement entropy between these two cases is:

$$\Delta S_{EE} = S_{EE}^1 - S_{EE}^2 = 0.306853. \quad (12)$$

There is a reduction of entanglement. To elaborate further, in the case where there is exactly one minimum, it means that the position of 1 is completely locked with 2. When 2 is not measured, the position of 1 is completely undetermined, with the same probability distributed over all possible sites. This is the infinite dimensional analogue of the Bell state $\frac{1}{\sqrt{2}}(|\uparrow\uparrow\rangle + |\downarrow\downarrow\rangle)$ when the two spins are maximally entangled. It leads to a maximal amount of ignorance when particle 2 is traced out. Now, one can see that any departure from this pattern of entanglement would always reduce the entanglement entropy; or in other words, in the case of two minima, when particle 2 is located at some position, particle 1 can be found in two different locations. This means that particle 1 has some "internal" distribution that does not depend on what we do with 2, and so, there could be information gained from measuring particle 1 even without particle 2, unlike the single minimum case when their behavior is completely locked.

In the next section, we will generalize to the case of an arbitrary number of minima.

2.1. Generalization to Multiple Minima

The previous calculation can be generalized to the case where the potential $V(x)$ has N minima, located at $\{L_i\}$, $1 \leq i \leq N$. The reduced density matrix is:

$$\rho_1(N) = \mathcal{N}^2 \sum_{x_1} \left(|x_1\rangle \langle x_1| + \frac{1}{N} \left(\sum_{i \neq j} e^{ik(L_i - L_j)} |x_1\rangle \langle x_1 + (L_i - L_j)| \right) \right). \quad (13)$$

Now, we apply the replica trick and compute $\text{Tr} \rho_1^n$. For simplicity, and in fact generically, $L_{ij} = L_i - L_j$ are not multiples of each other, and there are thus $N(N-1)/2$ distinct hopping step sizes.

$$n_0 + \sum_{i,j} n_{ij} = n, \quad (14)$$

$$\sum_{i,j} n_{ij} (L_i - L_j) = 0, \quad (15)$$

where n_0 is the number of standstill hops.

The contribution from each such set of closed paths is given by:

$$f_n(\{n_{ij}\}) = \mathcal{N}^{2n} \frac{n!}{N^{n-n_0} n_0! \prod_{i,j} (n_{ij}!)}. \quad (16)$$

For simplicity, let us compute the case of $n = 2$, which gives us the tightest lower bound on the entanglement entropy. For $n = 2$, the only allowed hopping is to take either $n_{ij} = n_{ji} = 1$, $n_0 = 0$ or $n_0 = 2$, which gives:

$$\text{Tr} \rho_1^2 = \mathcal{N}^2 \left(1 + \frac{N(N-1)}{N^2} \right) = \mathcal{N}^2 \left(2 - \frac{1}{N} \right). \quad (17)$$

We note that the entanglement entropy must be a monotonically decreasing function of N , the number of minima. It follows from the fact that with more minima, we actually gain knowledge of the first particle, for the same reason discussed previously, that two minima potential reduce entanglement compared to the case of a single minimum.

2.2. Generalization to Many Particles with Two Minima

2.2.1. Particles on a Ring: Periodic Boundary Condition

In this section, we generalize the previous calculation to N particles with the same form of potential $V(x_{i+1}, x_i)$ admitting only two minima between the nearest neighbors as in the first part of Section 2. For simplicity, we set $k = 0$ here. We consider a setup where these N particles are placed on a ring, i.e., with a periodic boundary condition (See Figure 1). The wavefunction is given by:

$$|\psi(x_1, x_2, \dots, x_N)\rangle = \frac{\mathcal{N}}{\sqrt{N!}} \sum_{\Delta_{ij}} \left(|x_1, \Delta_{ij} = 0\rangle + |x_1, \Delta_{ij} = a, -a\rangle \right), \quad (18)$$

where $i, j \geq 1$. Δ_{ij} denotes the separation between the particles i and j and $\sum_{x_1} |x_1, \Delta_{ij} = a, -a\rangle$ denotes all the configurations when any one of the $\Delta_{ij} = x_i - x_j$ are non-zero and equal to a . The periodic boundary condition implies $\sum_{i,j} \Delta_{ij} = 0$, which gives a very tight constraint. Since $\Delta_{ij} \forall i, j$ can only take values of either a or zero, this constraint implies either all $\Delta_{ij} = 0$ or only one of them can be non-vanishing and take value $\Delta_{ij} = a$ when $i < j$, $\forall i, j = x_1, \dots, x_N$. The latter automatically forces $\Delta_{x_N, x_1} = -a$. We further simplify the form of the wavefunction by taking x_1 as the reference point:

$$|\psi\rangle = \frac{\mathcal{N}}{\sqrt{N!}} \sum_{\Delta_{ij}} \left(|\psi_1(x_1, \Delta_{ij})\rangle + |\psi_2(x_1, \Delta_{ij})\rangle + |\psi_3(x_1, \Delta_{ij})\rangle + |\psi_4(x_1, \Delta_{ij})\rangle \right), \quad (19)$$

where:

$$\begin{aligned}
 |\psi_1(x_1, \Delta_{ij})\rangle &= |x_1, \Delta_{ij} = 0 \ \forall i, j \leq x_m\rangle \otimes \\
 &\quad |x_1, \Delta_{x_m, x_{m+1}} = 0, \Delta_{x_N, x_1} = 0, \Delta_{ij} = 0 \ \forall i, j = x_{m+1} \cdots x_N\rangle, \\
 |\psi_2(x_1, \Delta_{ij})\rangle &= |x_1, \Delta_{ij} = 0 \ \forall i, j \leq x_m\rangle \otimes \\
 &\quad |x_1, \Delta_{x_m, x_{m+1}} = a, \Delta_{x_N, x_1} = -a, \Delta_{ij} = 0 \ \forall i, j = x_{m+1} \cdots x_N\rangle, \\
 |\psi_3(x_1, \Delta_{ij})\rangle &= |x_1, \Delta_{ij} = 0 \ \forall i, j \leq x_m\rangle \otimes \\
 &\quad |x_1, \Delta_{x_m, x_{m+1}} = 0, \Delta_{x_N, x_1} = -a, \Delta_{ij} = a \ \forall i, j = x_{m+1} \cdots x_N\rangle, \\
 |\psi_4(x_1, \Delta_{ij})\rangle &= |x_1, \Delta_{ij} = a \ \forall i, j \leq x_m\rangle \otimes \\
 &\quad |x_1, \Delta_{x_N, x_1} = -a, \Delta_{x_i, x_j} = 0 \ \forall i, j = x_m \cdots x_N\rangle.
 \end{aligned}$$

Here, the total wavefunction is expressed as a tensor product of states living in the two regions. The periodic constraint then leads to four possible configurations of the states, which are labeled as $(\psi_1, \psi_2, \psi_3, \psi_4)$. ψ_1 corresponds to the state with $\Delta_{ij} = 0$ for all sites, while (ψ_2, ψ_3, ψ_4) correspond to states with $\Delta_{ij} \neq 0$ at the boundary $i = x_m, j = x_{m+1}$, at region $i, j \leq x_m$ and at region $x_m < i, j < x_N$, respectively. Now, the reduced density matrix can be computed by integrating out the first m particles:

$$\begin{aligned}
 \rho_A &= \frac{\mathcal{N}^2}{N!} \left((m-1) |x_m = x_1 + a, \Delta_{x_m x_{m+1}} = 0, \Delta_{x_N x_1} = -a \rangle \langle x_m = x_1 + a, \Delta_{x_m x_{m+1}} = 0, \right. \\
 &\quad \left. \Delta_{x_N x_1} = -a \right| + [|x_m = x_1, \Delta_{x_m x_{m+1}} = 0, \Delta_{x_N x_1} = 0 \rangle \langle x_m = x_1 + a, \Delta_{x_m x_{m+1}} = 0, \\
 &\quad \Delta_{x_N x_1} = -a \rangle + |x_m = x_1, \Delta_{x_m x_{m+1}} = a, \Delta_{x_N x_1} = -a \rangle \langle \text{c.c.} \rangle],
 \end{aligned} \quad (20)$$

where c.c denotes the complex conjugate. Up to an overall normalization factor:

$$\text{Tr} \rho_A^2 = 2[(m-1)^2 + 2(m-1) + \frac{N^2}{2} - N(m-1) + 1]. \quad (21)$$

Please refer to Appendix A.1 for an alternative derivation. Finally, the second Rényi entropy is:

$$S_2 = -\ln(\text{Tr} \rho_A^2). \quad (22)$$

Note that we have used the fact that there are $(m-1)$ configurations corresponding to $|x_1\rangle$ and $(N-m)$ configurations corresponding to $|\alpha_i\rangle$.

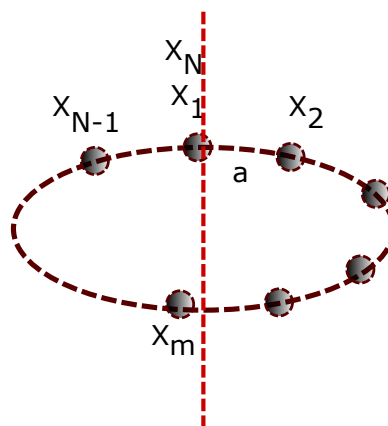


Figure 1. N particles on a ring. x_1, x_2, \dots, x_N denote the positions of these particles. a denotes the separation between any two particles. The dashed line in red denotes that the first m particles are traced out when we compute the reduced density matrix.

2.2.2. Particles on a Line: Without the Periodic Boundary Condition

This section considers N particles on a rod. The configuration is illustrated in Figure 2. The setup is almost identical to the previous calculation, but a periodic boundary condition is not imposed here. Hence, there is no constraint on these $\Delta_{ij} = x_i - x_j$, and they can take values independently of each other. We define $\sum_{i,j=1}^{m-1} \Delta_{ij} = L$ and $\sum_{i,j=m+1}^N \Delta_{ij} = M$. Furthermore, $\Delta_{m-1 m}$ can either take a value of a or zero. The wavefunction can be written as:

$$|\Psi\rangle = \mathcal{N} \sum_{L,M} \left(|x_1, L\rangle \otimes |x_m = x_1 + L, m\rangle + |x_1, L\rangle \otimes |x_m = x_1 + L + a, M\rangle \right). \quad (23)$$

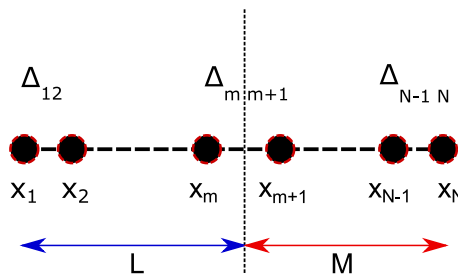


Figure 2. N particles on a rod. (x_1, x_2, \dots, x_N) denote the positions of these particles. Δ_{ij} denotes the separation between particles i and j . The first m particles are traced out when we compute the reduced density matrix.

The reduced density matrix is:

$$\begin{aligned} \rho_A &= \text{Tr}_{1\dots m} |\psi\rangle \langle \psi| \\ &= \mathcal{N}^2 \sum_{M,M',L=0}^{L=(m-1)a} \langle x_1, L | x_1, L' \rangle \\ &\quad \times \left[|x_m = x_1 + L, M\rangle \langle x_m = x_1 + L, M'| \right. \\ &\quad + |x_m = x_1 + L + a, M\rangle \langle x_m = x_1 + L + a, M'| \\ &\quad + |x_m = x_1 + L, M\rangle \langle x_m = x_1 + L + a, M'| \\ &\quad \left. + |x_m = x_1 + L + a, M\rangle \langle x_m = x_1 + L, M'| \right]. \end{aligned} \quad (24)$$

After some simplifications, one obtains:

$$\begin{aligned} \rho_A &= \mathcal{N}^2 \sum_{M,M',L=0}^{L=(m-1)a} \Gamma(L)^2 \left[2 |x_m, M\rangle \langle x_m, M'| \right. \\ &\quad + |x_m, M\rangle \langle x_m + a, M'| \\ &\quad \left. + |x_m, M\rangle \langle x_m - a, M'| \right], \end{aligned} \quad (25)$$

where $\Gamma(L)^2$ denotes all possible linear combinations of states. Finally, the reduced density matrix after summing over L and L' is:

$$\begin{aligned} \rho_A &= \mathcal{N}^2 \Delta \sum_{M,M'} \left[2 |x_m, M\rangle \langle x_m, M'| \right. \\ &\quad + |x_m, M\rangle \langle x_m + a, M'| \\ &\quad \left. + |x_m, M\rangle \langle x_m - a, M'| \right]. \end{aligned} \quad (26)$$

This is almost the same as the two-particle case in the previous section, except only with the extra factor of Δ , which counts the degeneracy of the states. From this, the computation of $n = 2$ Rényi entropies follows as before.

One of the most important messages from this calculation is that only the particles right next to the cut is responsible for the entanglement, as is testified by the form of the reduced density matrix. Therefore, the entanglement cannot exceed the dimension of the Hilbert space at site m , and therefore, we can interpret this strictly as an “area law” in the one-dimensional chain of particles. In this case, the potential between particles is a rigid well where perturbation is not possible, and it resembles a gapped one-dimensional system. The linear combination of states that represents the true ground state as a result of tunneling, at the end, surprisingly did not lead to more entanglement beyond the area law even as such a linear combination resulting from tunneling is taken into account.

3. Tunneling and Entanglement Entropy

To complete our discussion of the quantum mechanical caricature of instantons, let us now make slightly less approximations, so that notions of instantons feature more obviously and prominently. We return to the two-particle system, one at x_1 and the other at x_2 . We consider an interaction potential that depends only $x_1 - x_2$. We will now investigate the situation where the potential has multiple minima, and so, there is tunneling between two square wells through a potential wall with a finite width. The exponential tail in the wavefunction is precisely equivalent to what we call the action of instantons, which we will discuss in closer detail in [59] to make a detailed comparison with the corresponding field theoretic studies. Here, we want to investigate the entropy dependence on the width of the wall and justify the approximations taken in the previous sections, up to this small exponentially suppressed correction. The main goal of this section is to mimic the situation of false vacuum decay [41–43] and get as much intuition as possible for the effect of tunneling on the entanglement, particularly how the exponentially-suppressed tail first features in the time dependence.

3.1. Setup

Consider that two square wells each of width $(b - a)$ are separated by a barrier of width $2a$ (See Figure 3). We would like to study states very close to the ground states. As is well known, there are two almost degenerate states, with the first excited state split from the ground state by exponential factors of the width of the potential barrier. The true ground state has even parity, and the first excited state has odd parity, as we discuss in detail below.

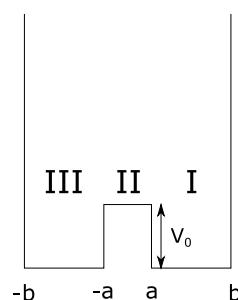


Figure 3. Square well.

The two particle wave-function can be obtained, including non-perturbative corrections. The even parity eigenstate wavefunction of a double square well with a barrier height of V_0 in between is [62]:

$$\begin{aligned}
 |\Psi\rangle_{\text{even}} &= A \sin k_+(x_1 - x_2 - b) & a < x_1 - x_2 < b & \text{region I} \\
 &= B \cosh \kappa_+(x_1 - x_2) & -a < x_1 - x_2 < a & \text{region II} \\
 &= -A \sin k_+(x_1 - x_2 + b) & -b < x_1 - x_2 < -a & \text{region III,}
 \end{aligned} \tag{27}$$

where k_+ and κ_+ are related to the energy E by:

$$E = \frac{\hbar^2 k_+^2}{2m} = V_0 - \frac{\hbar^2 \kappa_+^2}{2m}. \quad (28)$$

The odd parity wavefunction is:

$$\begin{aligned} |\Psi\rangle_{\text{odd}} &= A \sin k_-(x_1 - x_2 - b) & a < x_1 - x_2 < b & \text{region I} \\ &= B \sinh \kappa_-(x_1 - x_2) & -a < x_1 - x_2 < a & \text{region II} \\ &= A \sin k_-(x_1 - x_2 + b) & -b < x_1 - x_2 < -a & \text{region III,} \end{aligned} \quad (29)$$

where x_1 and x_2 denote the positions of the two particles. The momenta k_- , κ_- are related to the energy E by the analogous relation (28). This means that:

$$V_0 = \frac{\hbar^2 (k_+^2 + \kappa_+^2)}{2m} = \frac{\hbar^2 (k_-^2 + \kappa_-^2)}{2m} \quad (30)$$

We will consider the limit where we can solve the double-well problem entirely analytically. There is a limit in which the eigenvalues can be obtained perturbatively without resorting to numerics.

Physically, we are expecting that the wavefunction in Regions I and III are very close to the ground state of the wells where they can be very well approximated by infinite wells, up to exponentially-suppressed tails that leak into Region II. Using this knowledge therefore, we set $\delta k_{\pm} = (\pi - \epsilon_{\pm})$ where $\delta = b - a$, and we take $\epsilon_{\pm} \ll 1$. The continuity conditions of the wavefunction at the walls lead to consistency conditions that constrain the eigenvalues k_{\pm} and κ_{\pm} . For the even parity wavefunction, the consistency condition is:

$$k_+ \cot(b - a)k_+ = -\kappa_+ \tanh a\kappa_+, \quad (31)$$

and we get,

$$k_+ = \kappa_+ \epsilon_+ [1 - e^{-2a\kappa_+}]. \quad (32)$$

Similarly for the odd parity wavefunction, we get:

$$k_- = \kappa_- \epsilon_- [1 + 2e^{-2a\kappa_-}]. \quad (33)$$

As ϵ_{\pm} are small, so k_{\pm} is very small compared to κ_{\pm} . For the computation of the limit $k_{\pm} \gg \kappa_{\pm}$, please refer to Appendix A.2. Note however that $\kappa_{\pm}a$ are independent sets of dimensionless quantities, and to ensure that the tunneling across the wells is exponentially suppressed, we will take $\kappa_{\pm}a$ to be large. Now, using this, we can solve for δ in terms of say ϵ_- .

$$\pi - \epsilon_- = \delta \kappa_- \epsilon_- [1 - 2e^{-2a\kappa_-}]. \quad (34)$$

Up to the order we are interested in, we get:

$$\delta = \frac{\pi}{\kappa_- \epsilon_-} \left(1 - \frac{\epsilon_-}{\pi} - 2e^{-2a\kappa_-}\right). \quad (35)$$

For the later convenience, we can set:

$$\kappa_- = 1. \quad (36)$$

Furthermore, we make the substitution:

$$a = \frac{\alpha}{\kappa_-}. \quad (37)$$

As promised, $\alpha \gg 1$, but it is zeroth order in ϵ . We have chosen to do a double expansion, in $1/\alpha$ and ϵ independently. To churn out physics out of a complicated expressions with many independent dimensionless quantities, some concessions are necessary. Next, we define:

$$\kappa_+ = \kappa_- + \delta\kappa \quad (38)$$

and:

$$\epsilon_+ = \epsilon_- + \delta\epsilon. \quad (39)$$

Using (30) and:

$$\frac{\pi - \epsilon_+}{\pi - \epsilon_-} = \frac{\kappa_+ \epsilon_+ [1 - e^{-2a\kappa_+}]}{\kappa_- \epsilon_- [1 + 2e^{-2a\kappa_-}]}, \quad (40)$$

we can solve for $\delta\kappa$ and $\delta\epsilon$. Finally, we get:

$$\delta\kappa = \frac{4\epsilon_-^3 \kappa}{\pi} e^{-2a\kappa_-}, \quad (41)$$

and:

$$\delta\epsilon = 4\epsilon_- e^{-2a\kappa_-}. \quad (42)$$

Now, using (32), (41) and (42), we can write:

$$k_+ = k_- + \delta k, \quad (43)$$

where:

$$\delta k = -\frac{4k\epsilon_- e^{-2a\kappa_-}}{\pi}. \quad (44)$$

Normalizing the wavefunctions and solving for the continuity conditions, we have:

$$A_+ = \frac{1}{\sqrt{L\delta}} \left(1 - \frac{\epsilon_-}{2\pi} (1 + 4e^{-2a\kappa_-})\right), \quad (45)$$

$$A_- = \frac{1}{\sqrt{L\delta}} \left(1 - \frac{\epsilon_-}{2\pi}\right), \quad (46)$$

$$B_- = -\frac{2\epsilon_-}{\sqrt{L\delta}} e^{-a\kappa_-} (1 + e^{-2a\kappa_-}), \quad (47)$$

$$B_+ = \frac{2\epsilon_- e^{-a\kappa_-}}{\sqrt{L\delta}} (1 + 2e^{-2a\kappa_-}). \quad (48)$$

Typically, the trace of the density matrix is divergent due to the space time volume divergence. It is regulated by introducing a cut-off L to normalize the wavefunction. Finally, we compute the reduced density matrix when one particle has been traced out and obtain from it the $n = 2$ Rényi entropy:

$$S_2 = -\ln(\text{tr} \rho_A^2). \quad (49)$$

Expanding in ϵ and $1/\alpha$ and keeping the leading terms:

$$\begin{aligned} L \operatorname{tr} \rho_A^2 = & \left[\frac{(1 - 2e^{-2\alpha})}{12\pi\epsilon} \left(153 + 20\pi^2 - 36 \cos(\Delta Et) - (60 + 8\pi^2) \cos(2\Delta Et) \right) \right] \\ & + \left[\left\{ \frac{(1 + 2\pi^2)e^{-2\alpha}}{2\pi^2} - \frac{26(6 + \pi^2)e^{-4\alpha}}{3\pi^2} \right\} - \right. \\ & \left. \left\{ \left(1 + \frac{4(3 + \pi^2)e^{-2\alpha}}{3\pi^2} - \frac{20(3 + \pi^2)e^{-4\alpha}}{3\pi^2} \right) \cos(\Delta Et) \right\} \right. \\ & \left. - \left\{ \left(e^{-2\alpha} - \frac{10(3 + \pi^2)e^{-4\alpha}}{3\pi^2} \right) \cos(2\Delta Et) \right\} \right] + \mathcal{O}(\epsilon, \exp(-6\alpha)). \end{aligned} \quad (50)$$

Note that there is no linear t contribution. We will make more detailed comparison with a field theoretic instanton calculation in our other publication [59]. Let us note however that the exponentially-suppressed factors play exactly the same role as instantons and that at small t , the time dependence starts at $t^2 \Delta E^2 \sim t^2 \exp(-4\alpha)$. We note that in this calculation, we have taken a square double-well problem, which allowed us to solve for the wave-function exactly to compute entanglement entropy between the two particles. However, this problem is in fact the classic problem where the energy splitting $\delta\epsilon$ in (42) between the even and odd wave-functions can be approximated using the WKBapproximation. A beautiful discussion of this subject can be found in [63]. We only quote here that:

$$\delta\epsilon = \hbar K \exp(-S_0/\hbar), \quad (51)$$

where S_0 is the action of the single instanton evaluated on-shell, and one can readily check that the instanton solution here does reproduce $\exp(-2\alpha)$. We note therefore that its contribution to the entanglement entropy starts with $\exp(-2S_0/\hbar)$, which has the same action as a two-instanton solution. There is no obvious reason a priori where single instanton solutions leading to linear t terms do not contribute. Please refer to Appendix A.3 for a discussion on the linear t contribution. In fact, it is a famous observation in quantum quenches in $1 + 1$ d CFT that linear terms do contribute [64], dictated by the so-called “light-cone” effect at early times. We note, however, that this result is highly reminiscent of our field theoretic result in [59], except that linear t terms beginning with single instanton contributions appear there.

4. Free Bosons

The computation of entanglement using the wavefunction method particularly for free field theory has been considered before [65]. What we would like to emphasize here is that generically, in a Lorentz invariant field theory, the local basis in configuration space is related to the mode operators b and b^\dagger that define the Lorentz invariant vacuum in the specific way due to causality. This linear combination is dictated uniquely by the vanishing of commutators for space-like separation. See for example [66] for a detailed discussion. Therefore, perhaps expected, the large amount of entanglement in configuration space follows from Lorentz invariance. This fact should already be apparent in the Unruh effect relevant particularly in the case of half-space entanglement. The crucial point is that if we construct local creation and annihilation operators, i.e., creating bosons at site x based on local field variables $a(x) = \phi(x) + i\pi(x)$ and $a^\dagger(x) = \phi(x) - i\pi(x)$, these local creation and annihilation operators are related to the set of creation and annihilation operators that defines a Lorentz invariant vacuum by a Bogoliubov transformation, i.e., in other words, engineering a Lorentz invariant vacuum such that all inertial observers agree that there are no excitations requires much spatial entanglement. In the following, we will make these statements precise, by defining explicitly these local creation and annihilation bases and recover the Bogoliubov transformation relating the operators a and b . These Bogoliubov coefficients would then allow us to compute the entanglement entropy explicitly.

We start by considering a free scalar field ϕ with mass m and its conjugate momentum π ,

$$\begin{pmatrix} \phi \\ \pi \end{pmatrix} = \int \frac{dk}{(2\pi)} \frac{1}{\sqrt{2E}} \left[\begin{pmatrix} 1 \\ -iE \end{pmatrix} b_k + \begin{pmatrix} 1 \\ iE \end{pmatrix} b_{-k}^\dagger \right] e^{ikx}, \quad (52)$$

where $E = \sqrt{k^2 + m^2}$.

Let us consider a linear transformation, which relates the set of operators b_k to operators that are actually local:

$$\begin{pmatrix} \phi \\ \pi \end{pmatrix} = \int \frac{dk}{(2\pi)} \begin{pmatrix} \phi_k \\ \pi_{-k} \end{pmatrix} e^{ikx}. \quad (53)$$

Note that ϕ_k and π_k satisfy the following commutation relation:

$$[\phi_k, \pi_{k'}] = i\delta_{kk'}. \quad (54)$$

The two sets of operators are related by:

$$\begin{pmatrix} \phi_k \\ \pi_{-k} \end{pmatrix} = \frac{1}{\sqrt{2E}} \begin{pmatrix} 1 & 1 \\ -iE & iE \end{pmatrix} \begin{pmatrix} b_k \\ b_{-k}^\dagger \end{pmatrix}. \quad (55)$$

One can express (b_k, b_{-k}^\dagger) in terms of (ϕ_k, π_k) :

$$\begin{pmatrix} b_k \\ b_{-k}^\dagger \end{pmatrix} = \frac{i}{\sqrt{2E}} \begin{pmatrix} -iE & 1 \\ -iE & -1 \end{pmatrix} \begin{pmatrix} \phi_k \\ \pi_{-k} \end{pmatrix}. \quad (56)$$

The conditions above imply that $\phi_{-k}^\dagger = \phi_k$ and $\pi_{-k}^\dagger = \pi_k$. These two conditions imply that ϕ_k must be the \dagger of ϕ_{-k} and similarly for π_k and π_{-k} . We still have the freedom to choose the relation between ϕ_k and π_k , which we will examine in the next section. Let us first define a vacuum $|0\rangle_m$, which is annihilated by the operator b_k :

$$b_k |0\rangle_m = 0. \quad (57)$$

Hence, the new set of operators satisfies the equation:

$$\left(\sqrt{\frac{E}{2}} \phi_k + i \frac{1}{\sqrt{2E}} \pi_{-k} \right) |0\rangle_m = 0. \quad (58)$$

4.1. Appropriate Bogoliubov Transformation

Here, we would like to make a connection between the operators b_k, b_k^\dagger and the set of creation/annihilation operators that create/annihilate bosons locally. These local creation/annihilation operators $a(x), a^\dagger(x)$ are defined as follows.

$$a(x) = \sqrt{\frac{m}{2}} \phi(x) + i \frac{1}{\sqrt{2m}} \pi(x). \quad (59)$$

In which case, we have:

$$\phi_k = \frac{1}{\sqrt{2m}} (a_k + a_{-k}^\dagger), \quad (60)$$

$$\pi_{-k} = -i \sqrt{\frac{m}{2}} (a_k - a_{-k}^\dagger). \quad (61)$$

The linear map relating a, a^\dagger and b, b^\dagger is a Bogoliubov transformation. With this choice of transformation, the vacuum can be expressed in terms of a state constructed from the new set of operators:

$$|0\rangle_m = \frac{1}{\gamma} e^{-\sum_k c_k a_k^\dagger a_{-k}^\dagger} |0\rangle \quad (62)$$

$$= \frac{1}{\gamma} \prod_k \left(1 - c_k a_k^\dagger a_{-k}^\dagger + O\left((a_k^\dagger)^2, (a_{-k}^\dagger)^2\right) \right) |0\rangle, \quad (63)$$

where γ is the normalization factor, $|0\rangle$ is the vacuum defined by $a_k |0\rangle = 0$ and the coefficients c_k are fixed by Equation (58), and it depends on our choice of Bogoliubov transformation.

With (60) and (61), the coefficient c_k in (63) is:

$$c_k = \frac{E - m}{E + m}. \quad (64)$$

Let us now consider a system with finite number of sites. The inverse Fourier transform of the operator a_k is:

$$a_k = \sum_N a_N e^{-ikN}, \quad (65)$$

where N is the site label. The spatial annihilation and creation operators a_N and $a_{N'}^\dagger$ satisfy the usual commutation relations:

$$[a_N, a_{N'}^\dagger] = \delta_{N, N'}. \quad (66)$$

The vacuum with respect to the operator b_k can now be written as:

$$|0\rangle_m = \frac{1}{\gamma} \prod_k \left(1 - \sum_{NL} c_k e^{ik(N-L)} a_N^\dagger a_L^\dagger \right) |0\rangle. \quad (67)$$

To make contact with our previous calculations, what we have been taught by the quantum mechanical calculation is that the presence of multiple vacua ensues that the wavefunction is generally a linear combinations of peaks over individual minimum. The true ground state after tunneling is taken into account would be the even combination of these peaks. Now, in a scalar field theory, a wavefunction peaking over a minimum basically controls the expectation value of the scalar field. This situation is reminiscent of superconductors. Quasi-particle excitations can be described using Bogoliubov transformations to rotate to a suitable basis from some reference basis operators. Now, we can put these intuitions together to describe the true even-ground state wavefunctions of a field theory with two minima. It is basically a linear combination of two wavefunctions, each related to the local site creation and annihilation operators by a suitable Bogoliubov transformation, whose coefficients are controlled to leading order in the perturbation around these respective minima, the effective masses.

Therefore, we inspect the entanglement entropy of a state $|\Psi\rangle$, which is constructed from a general superposition of two vacua ($\alpha |0\rangle_{m_1} + \beta |0\rangle_{m_2}$) defined by two sets of operators of the form (52) with mass m_1 and m_2 , respectively. Using (67), the $|\Psi\rangle$ takes the following form,

$$|\Psi\rangle = \frac{1}{\sqrt{\mathcal{N}}} \left(\prod_k \left(1 - \sum_{NL} c_k e^{ik(N-L)} a_N^\dagger a_L^\dagger \right) |0\rangle + a_2 \prod_k \left(1 - \sum_{NL} \tilde{c}_k e^{ik(N-L)} a_N^\dagger a_L^\dagger \right) |0\rangle \right), \quad (68)$$

where \mathcal{N} is a overall normalization constant, a_2 is the relative weight factor, $c_k = \frac{E_1 - m_1}{E_1 + m_1}$ and $\tilde{c}_k = \frac{E_2 - m_2}{E_2 + m_2}$. Assuming $m_1, m_2 \gg \frac{1}{\tilde{L}}$, where \tilde{L} is the lattice spacing, the state can be simplified to:

$$\begin{aligned} |\Psi\rangle &= \frac{1}{\sqrt{\mathcal{N}}} \left(\left(1 - \sum_k \sum_{NL} c_k e^{ik(N-L)} a_N^\dagger a_L^\dagger \right) |0\rangle + \left(a_2 - \sum_k \sum_{NL} a_2 \tilde{c}_k e^{ik(N-L)} a_N^\dagger a_L^\dagger \right) |0\rangle \right) \\ &= \frac{1}{\sqrt{\mathcal{N}}} \left(1 + a_2 - \sum_k \sum_{NL} C_k f_{NL}^k a_N^\dagger a_L^\dagger \right) |0\rangle, \end{aligned} \quad (69)$$

where $C_k = c_k + a_2 \tilde{c}_k$ and $f_{NL}^k = e^{ik(N-L)}$. With this simplification, the normalization factors take the following form:

$$\mathcal{N} = |1 + a_2|^2 + \sum_{kk'} \sum_{NL} \left(f_{NL}^k f_{NL}^{*k'} + f_{NL}^k f_{LN}^{*k'} \right) C_k C_{k'}^* \quad (70)$$

$$= |1 + a_2|^2 + \kappa_0 + \kappa_1 + \kappa_2 \quad (71)$$

where:

$$\kappa_0 = \sum_{kk'} \sum_{\bar{n}\bar{l}} C_{k'}^* C_k \left(f_{\bar{n}\bar{l}}^{*k'} f_{\bar{n}\bar{l}}^k + f_{\bar{l}\bar{n}}^{*k'} f_{\bar{l}\bar{n}}^k \right), \quad (72)$$

$$\kappa_1 = \sum_{kk'} \sum_{\bar{n}l'l'} C_{k'}^* C_k \tilde{f}_{l'\bar{n}}^{*k'} \tilde{f}_{\bar{n}l}^k, \quad (73)$$

$$\kappa_2 = \sum_{kk'} \sum_{nl} C_{k'}^* C_k \left(f_{nl}^{*k'} f_{nl}^k + f_{ln}^{*k'} f_{nl}^k \right). \quad (74)$$

To compute the entanglement entropy, the configuration space is divided into two regions A and \bar{A} , where the sites in each region are labeled by small letters (n) and small letters with a bar (\bar{n}), respectively. The state $|\Psi\rangle$ is:

$$|\Psi\rangle = \frac{1}{\sqrt{\mathcal{N}}} \left((1 + a_2) - \sum_k \sum_{nl} C_k f_{nl}^k a_n^\dagger a_l^\dagger - \sum_k \sum_{\bar{n}\bar{l}} C_k f_{\bar{n}\bar{l}}^k a_{\bar{n}}^\dagger a_{\bar{l}}^\dagger - \sum_k \sum_{\bar{n}l} C_k \tilde{f}_{\bar{n}l}^k a_{\bar{n}}^\dagger a_l^\dagger \right) |0\rangle, \quad (75)$$

where $\tilde{f}_{\bar{n}l}^k = f_{\bar{n}l}^k + f_{l\bar{n}}^k$.

A reduced density matrix of ρ_A is constructed by tracing out the degrees of freedom in region \bar{A} :

$$\rho_A = \text{Tr}_{\bar{A}} (|\Psi\rangle \langle\Psi|) \quad (76)$$

$$\begin{aligned} &= \frac{1}{\mathcal{N}} \left[\left((1 + a_2) - \sum_k \sum_{nl} C_k f_{nl}^k a_n^\dagger a_l^\dagger \right) |0\rangle_{AA} \langle 0| \left((1 + a_2^*) - \sum_{k'} \sum_{n'l'} C_{k'}^* f_{n'l'}^{*k'} a_{n'} a_{l'} \right) \right]_{\bar{A}} \langle 0|0\rangle_{\bar{A}} \\ &+ |0\rangle_{AA} \langle 0| \left[\bar{A} \langle 0| \left(\sum_{k'} \sum_{\bar{n}l'} C_{k'}^* f_{\bar{n}l'}^{*k'} a_{\bar{n}} a_{\bar{l}} \right) \left(\sum_k \sum_{\bar{n}\bar{l}} C_k f_{\bar{n}\bar{l}}^k a_{\bar{n}}^\dagger a_{\bar{l}}^\dagger \right) |0\rangle_{\bar{A}} \right] \\ &+ a_l^\dagger |0\rangle_{AA} \langle 0| a_{l'} \left[\bar{A} \langle 0| \left(\sum_{k'} \sum_{\bar{n}l'} C_{k'}^* \tilde{f}_{l'\bar{n}}^{*k'} a_{\bar{n}} \right) \left(\sum_k \sum_{\bar{n}l} C_k \tilde{f}_{\bar{n}l}^k a_{\bar{n}}^\dagger \right) |0\rangle_{\bar{A}} \right]. \end{aligned} \quad (77)$$

The reduced density matrix ρ_A is then:

$$\rho_A = \frac{1}{\mathcal{N}} \left[(|1 + a_2|^2 + \kappa_0) |0\rangle \langle 0| - (1 + a_2^*) |2\rangle \langle 0| - (1 + a_2) |0\rangle \langle 2| + |1\rangle \langle 1| + |2\rangle \langle 2| \right], \quad (78)$$

where the subscript label A for the vacuum in region A is dropped,

$$|2\rangle = \sum_k \sum_{nl} C_k f_{nl}^k a_n^\dagger a_l^\dagger |0\rangle, \quad (79)$$

$$|1\rangle \langle 1| = \sum_{kk'} \sum_{\bar{n}l'l'} C_{k'}^* C_k \tilde{f}_{l'\bar{n}}^{*k'} \tilde{f}_{\bar{n}l}^k a_l^\dagger |0\rangle \langle 0| a_{l'}. \quad (80)$$

Let us consider the second Rényi entropy S_2 . The square of the reduced density matrix is:

$$\begin{aligned} \rho_A^2 &= \frac{1}{\mathcal{N}^2} \left((|1 + a_2|^2 + \kappa_0)^2 + |1 + a_2|^2 \kappa_2 \right) |0\rangle \langle 0| - (|1 + a_2|^2 (|1 + a_2|^2 + \kappa_0) + (1 + a_2) \kappa_2) |0\rangle \langle 2| \\ &- (|1 + a_2|^2 (|1 + a_2|^2 + \kappa_0) + (1 + a_2^*) \kappa_2) |2\rangle \langle 0| + \tilde{\kappa} |1\rangle \langle 1| + (|1 + a_2|^2 + \kappa_2) |2\rangle \langle 2|. \end{aligned} \quad (81)$$

The coefficient $\tilde{\kappa}$ is given by:

$$\tilde{\kappa} |1\rangle \langle 1| = |1\rangle \langle 1| 1\rangle \langle 1| \quad (82)$$

$$\begin{aligned} &= \left(\sum_{kk'} \sum_{\tilde{n}lp} C_{k'}^* C_k \tilde{f}_{p\tilde{n}}^{*k'} \tilde{f}_{\tilde{n}l}^k a_l^\dagger |0\rangle \langle 0| a_p \right) \left(\sum_{k''k'''} \sum_{\tilde{n}'l'q} C_{k'''}^* C_{k''} \tilde{f}_{l'\tilde{n}'}^{*k'''} \tilde{f}_{\tilde{n}'q}^{k''} a_q^\dagger |0\rangle \langle 0| a_{l'} \right) \\ &= \sum_{kk'k''k'''} \sum_{\tilde{n}\tilde{n}'l'l'p} C_{k'}^* C_k C_{k'''}^* C_{k''} \tilde{f}_{p\tilde{n}}^{*k'} \tilde{f}_{\tilde{n}l}^k \tilde{f}_{l'\tilde{n}'}^{*k'''} \tilde{f}_{\tilde{n}'p}^{k''} a_l^\dagger |0\rangle \langle 0| a_{l'} , \end{aligned} \quad (83)$$

S_2 is computed by taking the trace of (81):

$$\begin{aligned} S_2 &= -\ln \text{Tr} \rho_A^2 \\ &= -\ln \left(\frac{1}{\mathcal{N}^2} (|1+a_2|^4 + 2|1+a_2|^2 \kappa_0 + 2|1+a_2|^2 \kappa_2 + \mathcal{O}(c_k^4)) \right) , \\ &= -\ln \left(1 - 2 \frac{\kappa_1}{|1+a_2|^2} + \mathcal{O}(c_k^4) \right) \end{aligned} \quad (84)$$

where we have used $\mathcal{N} = |1+a_2|^2 + \kappa_0 + \kappa_1 + \kappa_2$ and kept only the terms up to $\mathcal{O}(c_k^2)$ for consistency. S_2 contains only contributions from the links between region A and \bar{A} coming from κ_1 , and there is no entanglement when the correlation between region A and \bar{A} is turned off.

4.2. A Discussion

The coefficients $C_k = c_k + \tilde{c}_k$ control the range of the interaction. Recall that in this bosonic system:

$$c_k = \frac{E-m}{E+m} . \quad (85)$$

We expand the energy E in powers of $(\frac{m}{k})$ and keep up to the second order.

$$\frac{E-m}{E+m} = 1 - \frac{2m}{k} + \mathcal{O}\left(\left(\frac{m}{k}\right)^2\right) . \quad (86)$$

The factor $\sum_k c_k f_{nl}^k$ can be converted to an integral by taking a continuum limit with an IR cut-off of the order of the mass m and the inverse lattice spacing $\frac{1}{L}$ as the UV cut-off, respectively.

$$F_{nl} = \sum_k c_k f_{nl}^k \sim \int_{\tilde{c}m}^{\frac{1}{L}} dk \left(\frac{E-m}{E+m} \right) e^{ik(n-l)a} \quad (87)$$

$$\approx F(x) \approx \int_{\tilde{c}m}^{\frac{1}{L}} dk \left(\frac{E-m}{E+m} \right) e^{ikx} \quad (88)$$

$$\approx \int_{\tilde{c}m}^{\frac{1}{L}} dk \left(1 - \frac{2m}{k} \right) e^{ikx} . \quad (89)$$

where \tilde{c} is a constant. The integral is evaluated numerically and is shown in Figure 4.

This shows that the interaction between sites is short range; the function decays exponentially with distances. Only the sites near the boundary contribute to the entanglement entropy. Hence, an area law is expected in this model (interested readers are referred to [67,68] and the references within for the computation of entanglement entropy for squeezed states in various other situations).

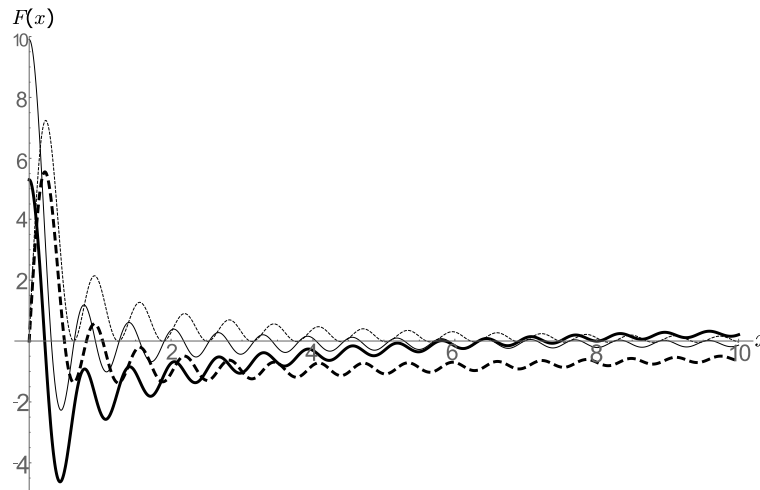


Figure 4. The thinner solid and dashed curves represent the real and imaginary parts of the integral up to the first order, and the thicker curves represent the integral up to the second order, respectively. The amplitude of all curves decreases quickly with distance, and the long-range contribution averages to zero due to the oscillatory behavior. $m = 1$, $\tilde{c} = 0.1$ and $\tilde{L} = 0.1$ are used in this plot.

5. Discussions

In this note, we attempt to study the physics of non-perturbative or, more specifically, instanton corrections to the entanglement entropy in a general many body system motivated by field theory. We pursue a strategy that focuses on the wavefunction itself. To set the stage, we look at the toy model of a many particle system where the two-particle potential has multiple minima. We apply the method of writing down explicit wavefunctions that describe the true ground states as in the case of field theory [59]. The trick used here is the Bogoliubov transformation. Its utility is demonstrated in the simple case of free bosons in $1 + 1$ dimensions, where the minima are massive. As a first test, we demonstrate that the area law is expected to hold. Our method attempts to attack the physics of the problem directly, which gives a very clear picture of the nature of the entanglement. In field theory, it can be understood as arising from pair creations of particles across a region and its complement dictated in a way demanded by Lorentz symmetry. Even after the effects of tunneling are included, where the true ground state is approximated by a linear combination of vacua corresponding to peaks over different minima with generically different effective masses, we confirm that the entanglement entropy of these local theories still respects the area law in the presence of non-perturbative effects. We would like to explore how these methods can be applied also to gauge theories. That should provide a more direct insight into the nature of quantum entanglement in the ground states of gauge theories and a handle on the reduced density matrix and its spectra.

Acknowledgments: The authors would like to thank Horacio Casini for valuable comments. Arpan Bhattacharyya and Ling-Yan Hung would like to acknowledge support by the Thousand Young Talents Program and Fudan University. Si-Nong Liu would like to acknowledge the support by Fudan University. Arpan Bhattacharyya, Pak Hang Chris Lau and Ling-Yan Hung would like to thank the organizer of the “YKIS 2016: Quantum Matter, Spacetime and Information” conference held at YITP, Kyoto, 13–17 June, where a part of this work was completed. Pak Hang Chris Lau thanks the hospitality of Fudan University, and he is supported by a JSPS postdoctoral fellowship for overseas researchers. Finally, Arpan Bhattacharyya, Pak Hang Chris Lau and Ling-Yan Hung would like to thank Charles Melby-Thompson for various stimulating discussions and the collaboration on a paper [59] related to this topic.

Author Contributions: All authors have contributed equally in research and writing of the manuscript. And all authors have read and approved the final manuscript.

Conflicts of Interest: The authors declare no conflict of interest.

Appendix A

Appendix A.1. Multi-Particle

This section presents an alternative method of computing the Rényi entropy of the multi-particle system. We start with the wavefunction for N particles written in a similar form as in the two-particle case (3).

$$|\Psi_k\rangle = \frac{1}{\sqrt{2^N}} \sum_{\{x_i\}} \prod_{i=1}^{N-1} e^{ikX} \left(\delta(x_{i+1} - x_i) + \delta(x_{i+1} - x_i - a) \right) \times \left(\delta(x_N - x_1) + \delta(x_N - x_1 - a) \right) |x_1 \cdots x_N\rangle, \quad (\text{A1})$$

The density matrix of the system is then:

$$\rho = |\Psi_k\rangle \langle \Psi_k| \quad (\text{A2})$$

$$\begin{aligned} &= \frac{1}{2^N} \sum_{\{x_i\}, \{y_i\}} \prod_{i=1}^{N-1} e^{ik(X-Y)} \\ &\quad \times \left(\delta(x_{i+1} - x_i) + \delta(x_{i+1} - x_i - a) \right) \left(\delta(y_{i+1} - y_i) + \delta(y_{i+1} - y_i - a) \right) \\ &\quad \times \left(\delta(x_N - x_1) + \delta(x_N - x_1 - a) \right) \left(\delta(y_N - y_1) + \delta(y_N - y_1 - a) \right) \\ &\quad \times |x_1 \cdots x_N\rangle \langle y_1 \cdots y_N|. \end{aligned} \quad (\text{A3})$$

If one traces out the particles $(m+1, \dots, N)$, the following reduced density matrix is obtained:

$$\begin{aligned} \rho_A = & \frac{1}{2^N} \sum_{x_m, y_m} e^{i \frac{k}{M} m_m (x_m - y_m)} \sum_{x_1, y_1} e^{i \frac{k}{M} \sum_{j=1}^{m-1} m_j (x_1 - y_1)} \\ & \times \sum_{\tilde{k}_1=0}^{m-1} \delta(x_m - x_1 - \tilde{k}_1 a) \sum_{s=\tilde{k}_1-1}^{\tilde{k}_1} \left[\sum_{\tilde{N}_1=2}^{m-s} \sum_{\tilde{N}_2=\tilde{N}_1+1}^{m-s+1} \cdots \sum_{\tilde{N}_s=\tilde{N}_{s-1}+1}^{m-1} e^{i \frac{k}{M} \left(\sum_{i_1=\tilde{N}_1}^{m-1} m_{i_1} + \cdots + \sum_{i_s=\tilde{N}_s}^{m-1} m_{i_s} \right) a} \right] \\ & \times \sum_{\tilde{k}_2=0}^{m-1} \delta(y_m - y_1 - \tilde{k}_2 a) \sum_{s=\tilde{k}_2-1}^{\tilde{k}_2} \left[\sum_{\tilde{N}_1=2}^{m-s} \sum_{\tilde{N}_2=\tilde{N}_1+1}^{m-s+1} \cdots \sum_{\tilde{N}_s=\tilde{N}_{s-1}+1}^{m-1} e^{-i \frac{k}{M} \left(\sum_{i_1=\tilde{N}_1}^{m-1} m_{i_1} + \cdots + \sum_{i_s=\tilde{N}_s}^{m-1} m_{i_s} \right) a} \right] \\ & \times \sum_{x_N} \left(\sum_{\tilde{k}=0}^{N-m} C_{\tilde{k}}^{N-m} \delta(x_N - x_m - \tilde{k}a) \delta(x_m - y_m) \right. \\ & \quad + \sum_{\tilde{k}=0}^{N-m-1} C_{\tilde{k}}^{N-m-1} \delta(x_N - x_m - \tilde{k}a) \delta(x_m - y_m - a) \\ & \quad + \sum_{\tilde{k}=1}^{N-m} C_{\tilde{k}}^{N-m} \delta(x_N - x_m - \tilde{k}a) \delta(y_m - x_m - a) \Big) \\ & \quad \times \left(\delta(x_N - x_1) + \delta(x_N - x_1 - a) \right) \left(\delta(x_N - y_1) + \delta(x_N - y_1 - a) \right) \\ & \quad \times |x_1 \cdots x_m\rangle \langle y_1 \cdots y_m|. \end{aligned} \quad (\text{A4})$$

The δ -functions constrain the allowed value of $(\tilde{k}_1, \tilde{k}_2, \tilde{k}_3)$. A total of eight different types of components of the reduced density matrix is obtained.

$$\frac{(N-m)+1}{2^N} \sum_{x_N} |x_N, \dots, x_N\rangle \langle x_N, \dots, x_N|, \quad (\text{A6})$$

$$\frac{1}{2^N} \sum_{x_N} e^{-i \frac{k}{M} \sum_{j=1}^{m-1} \tilde{m}_j a} \left[\sum_{\tilde{N}_1=2}^{m-1} e^{i \frac{k}{M} \sum_{i_1=\tilde{N}_1}^{m-1} m_{i_1} a} \right] |x_N - a, \dots, x_N\rangle \langle x_N, \dots, x_N|, \quad (\text{A7})$$

$$\frac{1}{2^N} \sum_{x_N} e^{i \frac{k}{M} \sum_{j=1}^{m-1} \tilde{m}_j a} \left[\sum_{\tilde{N}_1=2}^{m-1} e^{-i \frac{k}{M} \sum_{i_1=\tilde{N}_1}^{m-1} m_{i_1} a} \right] |x_N, \dots, x_N\rangle \langle x_N - a, \dots, x_N|, \quad (\text{A8})$$

$$\frac{1}{2^N} \sum_{x_N} \left[\sum_{\tilde{N}_1=2}^{m-1} e^{i \frac{k}{M} \sum_{i_1=\tilde{N}_1}^{m-1} m_{i_1} a} \right] \left[\sum_{\tilde{N}_1=2}^{m-1} e^{-i \frac{k}{M} \sum_{i_1=\tilde{N}_1}^{m-1} m_{i_1} a} \right] |x_N - a, \dots, x_N\rangle \langle x_N - a, \dots, x_N|, \quad (\text{A9})$$

$$\frac{1}{2^N} \sum_{x_N} e^{i \frac{k}{M} m_m a} e^{i \frac{k}{M} \sum_{j=1}^{m-1} m_j a} |x_N, \dots, x_N\rangle \langle x_N - a, \dots, x_N - a|, \quad (\text{A10})$$

$$\frac{1}{2^N} \sum_{x_N} e^{i \frac{k}{M} m_m a} \left[\sum_{N_1=2}^{m-1} e^{i \frac{k}{M} \sum_{i_1=N_1}^{m-1} m_{i_1} a} \right] |x_N - a, \dots, x_N\rangle \langle x_N - a, \dots, x_N - a|, \quad (\text{A11})$$

$$\frac{1}{2^N} \sum_{x_N} e^{-i \frac{k}{M} m_m a} e^{-i \frac{k}{M} \sum_{j=1}^{m-1} m_j a} |x_N - a, \dots, x_N - a\rangle \langle x_N, \dots, x_N|, \quad (\text{A12})$$

$$\frac{1}{2^N} \sum_{x_N} e^{-i \frac{k}{M} m_m a} \left[\sum_{N_1=2}^{m-1} e^{-i \frac{k}{M} \sum_{i_1=N_1}^{m-1} m_{i_1} a} \right] |x_N - a, \dots, x_N - a\rangle \langle x_N - a, \dots, x_N|. \quad (\text{A13})$$

The second Rényi entropy is:

$$S_2 = -\ln \left[\left(\frac{1}{2^N} \right)^2 \left(N^2 + 2(m-1)^2 + 4(m-1) - 2N(m-1) + 2 \right) \right] \quad (\text{A14})$$

$$= -\ln \left[\left(\frac{1}{2^N} \right)^2 \left(N^2 \left(\left(1 - \frac{2}{N} \right) + 2 \left(\frac{m}{N} \right)^2 - 2 \left(\frac{m}{N} \right) \right) \right) \right], \quad (\text{A15})$$

which matches with (21).

Appendix A.2. Double Well Tunneling Revisited

In Section 3, we discussed the two-well potential in the limit that $k \ll \kappa$ and made some connections with instantons [59]. Here, we would like to look for an alternative limit, in which $k \gg \kappa$. In this case, the result takes a very similar form, but it does not have a simple semi-classical interpretation in terms of instantons. Nonetheless, we consider it for completeness.

To take that limit, we follow the following procedure:

- (1) We will first assume $b - a = \delta$ is very small, so the well is very thin, and we set $a = 1$.
- (2) Next, set $k_+ = \frac{1}{\delta} \left(\frac{\pi}{2} + \epsilon \right)$ and $k_- = \frac{1}{\delta} \left(\frac{\pi}{2} - \epsilon \right)$, where ϵ is a very small number.
- (3) Finally, we will carry out all the calculations by taking this double limit $\delta \rightarrow 0$ and $\epsilon \rightarrow 0$ such that the ratio of $\frac{\epsilon}{\delta} = \tilde{\alpha}$ remains finite.

Basically, the consequence of these assumptions is that Region II becomes very large, and Regions I and III become very small. The wavefunction rises sharply in Region III, which reaches its maxima near $x_1 - x_2 = -a$, then decays very slowly in Region II, until it reaches its minima around the middle of Region II. Then, it is raised again very slowly up to $x_1 - x_2 = a$ and finally decays very fast in Region I. The length scale governing this in Region I is $\frac{1}{k_-}$, which is smaller than the length scale $\frac{1}{k}$ in Region II. The consistency conditions coming from matching the wavefunction and its derivative at the boundary between Region I and Region II give the following condition:

$$\kappa_{\pm} (1 \mp 2e^{-2\kappa_{\pm} a}) = k_{\pm} \epsilon. \quad (\text{A16})$$

Then, using the fact:

$$k_+^2 + \kappa_+^2 = k_-^2 + \kappa_-^2, \quad (\text{A17})$$

and assuming $\kappa_+ = \kappa_-$, we have:

$$\frac{k_+^2}{k_-^2} = 1 - 8\epsilon^2 e^{-2\kappa a}. \quad (\text{A18})$$

Note that typically, κ is large, but κa is very small. With our approximations, we can set:

$$\kappa = \frac{\pi \tilde{\alpha}}{2}. \quad (\text{A19})$$

The next task is to determine the normalization of the wavefunction A and B . First, we look at the even parity wavefunction. One equation comes from the continuity of the wavefunction at the boundary:

$$\frac{B}{A} = 2e^{-\kappa a} \left(1 - \frac{\epsilon^2}{2}\right). \quad (\text{A20})$$

Another condition comes from the normalization of the total density matrix:

$$\text{tr } \rho = 1, \quad (\text{A21})$$

$$A^2 L \left\{ \left[(b-a) - \frac{\sin 2k_+(b-a)}{2k_+} \right] + \frac{B^2}{A^2} \left[a + \frac{\sinh 2\kappa a}{2\kappa} \right] \right\} = 1. \quad (\text{A22})$$

Solving (A20) and (A22), we get:

$$A^2 = \frac{\kappa}{L} (1 + e^{-4\kappa a}), \quad (\text{A23})$$

and:

$$B^2 = 4 \frac{\kappa}{L} e^{-2\kappa a} (1 - \epsilon^2). \quad (\text{A24})$$

The wavefunction is translation invariant as it is a function of $x_1 - x_2$. All the expressions are independent of x_1 after the integration over x_2 . The integration over x_1 gives the length of the system, which is typically divergent, so we impose an upper limit cut-off L for the system size. For the odd parity wavefunction, we also arrive at the same result for A and B . Next, we use (A19) and are left with only one parameter δ . In all the subsequent calculations, we will expand around $\delta = 0$ and extract the leading term. Now, we want to compute the reduced density matrix for a wavefunction in a false vacuum and observe the effect of tunneling on the entanglement entropy. Let us consider the following wavefunction:

$$|\psi\rangle = \alpha |+\rangle + \beta e^{i\Delta E t} |-\rangle. \quad (\text{A25})$$

$|+\rangle$ and $|-\rangle$ respectively denote the even and odd parity wavefunctions; α and β can be complex in general, but for simplicity, we will set them to unity. ΔE is the energy splitting between the $|+\rangle$ and $|-\rangle$ states and is proportional to $e^{-\kappa a}$. As we want to observe the leading effect of energy splitting to the entropy, only the leading exponential terms are extracted. By virtue of our expansion scheme discussed in the previous section, we can keep track of the power of this exponential without expanding it. The first couple of terms are sufficient for our purpose. The leading contribution is:

$$\text{tr } \rho_A^2 = \frac{2}{L \delta^2} \left(\frac{5}{\pi \tilde{\alpha}} - \frac{8}{3} e^{-E \pi} \pi^2 \tilde{\alpha}^2 \right) + \dots. \quad (\text{A26})$$

Note that the leading order is time independent. The time dependence typically comes from terms like $e^{-2\tilde{\alpha}\pi} \tilde{\alpha} \cos(2 \Delta E t) \sinh(2\tilde{\alpha}\pi)$. As ΔE is itself proportional to $e^{-\kappa a}$, it is subleading compared to the terms in (A26). Substituting in $\tilde{\alpha} = \frac{2\kappa}{\pi}$ from (A19), one obtains (in $a = 1$ convention):

$$\text{tr } \rho_A^2 = \frac{1}{L \delta^2} \left(\frac{5}{\kappa} - \frac{64}{3} e^{-4\kappa} \kappa^2 \right). \quad (\text{A27})$$

Appendix A.3. False Vacuum Tunneling

Let us go back to the two-particle system and consider a configuration where the two particles are at the minimum $x = x_1 - x_2 = 0$ at $t = 0$. The particles will tunnel back and forth from $x = 0$ to the other minimum $x = a$:

$$|\Psi_k(t, x_1, x_2)\rangle = \frac{\mathcal{N}}{2} \sum_{x_1, x_2} e^{ikX} \left[|+\rangle + e^{i\Delta t} |-\rangle \right], \quad |\pm\rangle = |x=0\rangle \pm |x=a\rangle, \quad (\text{A28})$$

where Δ is the energy difference between the ground state and the first excited state. The reduced density matrix of this state is:

$$\rho_1 = \mathcal{N}^2 \sum_{x_1} \left(|x_1\rangle \langle x_1| - i \frac{\sin \Delta t}{2} e^{i \frac{k}{M} m_1 a} |x_1\rangle \langle x_1 + a| + i \frac{\sin \Delta t}{2} e^{-i \frac{k}{M} m_1 a} |x_1\rangle \langle x_1 - a| \right). \quad (\text{A29})$$

The only difference from (4) is the additional sine factor in the off-diagonal terms. The contribution to $\text{Tr} \rho_1^n$ from m hops follows almost from previous consideration, but a slight modification, and is:

$$f_n(m) = \mathcal{N}^{2n} \frac{n!}{m! m! (n-2m)!} \left(\frac{\sin \Delta t}{2} \right)^{2m}. \quad (\text{A30})$$

Then, the total contribution is:

$$\text{Tr} \rho_1^n = \frac{1}{\mathcal{N}^2} \sum_{m=0}^{\lfloor n/2 \rfloor} f_n(m) = \mathcal{N}^{2(n-1)} {}_2F_1 \left(\frac{1}{2} - \frac{n}{2}, -\frac{n}{2}, 1, \sin^2 \Delta t \right), \quad (\text{A31})$$

where ${}_2F_1 \left(\frac{1}{2} - \frac{n}{2}, -\frac{n}{2}, 1, \sin^2 \Delta t \right)$ is the hypergeometric function. A lower bound of the entanglement entropy is given by the second Rényi entropy S_2 as:

$$S_2 = \mathcal{N}^4 \left(1 + \frac{\sin^2 \Delta t}{2} \right). \quad (\text{A32})$$

Note that the leading time dependence in the ($\Delta t \ll 1$) limit is proportional to $\Delta^2 t^2$. This suggest that the contribution is subleading compared to the usual instanton result in a field theory.

We note that it is actually possible to have a linear time dependence in the Rényi entropy. Had we considered the following wave-function:

$$|\Psi\rangle = \frac{\mathcal{N}}{\sqrt{2}} (A|+\rangle + B e^{i\Delta t} |-\rangle), \quad |A|^2 + |B|^2 = 1, \quad (\text{A33})$$

with generic complex numbers A and B . The final result for the Rényi entropy is given by:

$$S_n = \frac{\ln \text{tr}(\rho_A^n)}{1-n} \quad \text{tr}(\rho_A^n) = \mathcal{N}^{2(n-1)} {}_2F_1 \left(\frac{1}{2} - \frac{n}{2}, -\frac{n}{2}, 1, \sigma_+ \sigma_- \right), \quad (\text{A34})$$

where we define:

$$\sigma_+ = |A|^2 - |B|^2 \pm 2iA\bar{B} \sin \Delta t \quad \sigma_- = \bar{\sigma}_+. \quad (\text{A35})$$

A linear t dependence appears as soon as A and B become complex numbers.

References

1. Levin, M.; Wen, X.G. Detecting Topological Order in a Ground State Wave Function. *Phys. Rev. Lett.* **2006**, *96*, 110405, doi:10.1103/PhysRevLett.96.110405.
2. Kitaev, A.; Preskill, J. Topological entanglement entropy. *Phys. Rev. Lett.* **2006**, *96*, 110404, doi:10.1103/PhysRevLett.96.110404.
3. Chen, X.; Gu, Z.-C.; Liu, Z.-X.; Wen, X.-G. Symmetry protected topological orders in interacting bosonic systems. *arXiv* **2013**, arXiv:1301.0861.
4. Wen, X.G. Classifying gauge anomalies through symmetry-protected trivial orders and classifying gravitational anomalies through topological orders. *Phys. Rev. D* **2013**, *88*, 045013, doi:10.1103/PhysRevD.88.045013.
5. Kong, L.; Wen, X.G. Braided fusion categories, gravitational anomalies, and the mathematical framework for topological orders in any dimensions. *arXiv* **2014**, arXiv:1405.5858.

6. Wang, J.C.; Gu, Z.-C.; Wen, X.G. Field theory representation of gauge-gravity symmetry-protected topological invariants, group cohomology and beyond. *Phys. Rev. Lett.* **2015**, *114*, 031601, doi:10.1103/PhysRevLett.114.031601.
7. Ryu, S.; Takayanagi, T. Holographic derivation of entanglement entropy from AdS/CFT. *Phys. Rev. Lett.* **2006**, *96*, 181602, doi:10.1103/PhysRevLett.96.181602.
8. Ryu, S.; Takayanagi, T. Aspects of Holographic Entanglement Entropy. *J. High Energy Phys.* **2006**, *2006*, 045, doi:10.1088/1126-6708/2006/08/045.
9. Swingle, B. Entanglement Renormalization and Holography. *Phys. Rev. D* **2012**, *86*, 065007, doi:10.1103/PhysRevD.86.065007.
10. Pastawski, F.; Yoshida, B.; Harlow, D.; Preskill, J. Holographic quantum error-correcting codes: Toy models for the bulk/boundary correspondence. *J. High Energy Phys.* **2015**, *2015*, 149, doi:10.1007/JHEP06(2015)149.
11. Hayden, P.; Nezami, S.; Qi, X.L.; Thomas, N.; Walter, M.; Yang, Z. Holographic duality from random tensor networks. *J. High Energy Phys.* **2016**, *2016*, 9, doi:10.1007/JHEP11(2016)009.
12. Bhattacharyya, A.; Gao, Z.S.; Hung, L.Y.; Liu, S.N. Exploring the Tensor Networks/AdS Correspondence. *J. High Energy Phys.* **2016**, *2016*, 86, doi:10.1007/JHEP08(2016)086.
13. Czech, B.; Lamprou, L.; McCandlish, S.; Sully, J. Tensor Networks from Kinematic Space. *J. High Energy Phys.* **2016**, *2016*, 100, doi:10.1007/JHEP07(2016)100.
14. Vidal, G.; Latorre, J.I.; Rico, E.; Kitaev, A. Entanglement in quantum critical phenomena. *Phys. Rev. Lett.* **2003**, *90*, 227902, doi:10.1103/PhysRevLett.90.227902.
15. Latorre, J.I.; Rico, E.; Vidal, G. Ground state entanglement in quantum spin chains. *Quant. Inf. Comput.* **2004**, *4*, 48–92.
16. Srednicki, M. Entropy and area. *Phys. Rev. Lett.* **1993**, *71*, 666–669.
17. Peschel, I. On the entanglement entropy for a XY spin chain. *J. Stat. Mech.* **2004**, *2004*, P12005, doi:10.1088/1742-5468/2004/12/P12005.
18. Jin, B.-Q.; Korepin, V.E. Quantum Spin Chain, Toeplitz Determinants and Fisher-Hartwig Conjecture. *J. Stat. Phys.* **2004**, *116*, 79–95.
19. Its, A.R.; Jin, B.Q.; Korepin, V.E. Entanglement in XY Spin Chain. *J. Phys. A Math. Gen.* **2005**, *38*, 2975–2990.
20. Plenio, M.B.; Eisert, J.; Dreissig, J.; Cramer, M. Entropy, entanglement, and area: Analytical results for harmonic lattice systems. *Phys. Rev. Lett.* **2005**, *94*, 060503, doi:10.1103/PhysRevLett.94.060503.
21. Cramer, M.; Eisert, J.; Plenio, M.B.; Dreissig, J. An entanglement-area law for general bosonic harmonic lattice systems. *Phys. Rev. A* **2006**, *73*, 012309, doi:10.1103/PhysRevA.73.012309.
22. Das, S.; Shankaranarayanan, S. How robust is the entanglement entropy-area relation? *Phys. Rev. D* **2006**, *73*, 121701, doi:10.1103/PhysRevD.73.121701.
23. Wolf, M.M. Violation of the entropic area law for Fermions. *Phys. Rev. Lett.* **2006**, *96*, 010404, doi:10.1103/PhysRevLett.96.010404.
24. Gioev, D.; Klich, I. Entanglement entropy of fermions in any dimension and the Widom conjecture. *Phys. Rev. Lett.* **2006**, *96*, 100503, doi:10.1103/PhysRevLett.96.100503.
25. Barthel, T.; Chung, M.C.; Schollwock, U. Entanglement scaling in critical twodimensional fermionic and bosonic systems. *Phys. Rev. A* **2006**, *74*, 022329, doi:10.1103/PhysRevA.74.022329.
26. Li, W.; Ding, L.; Yu, R.; Roscilde, T.; Hass, S. Scaling behavior of entanglement in two- and three-dimensional free-fermions systems. *Phys. Rev. B* **2006**, *74*, 073103, doi:10.1103/PhysRevB.74.073103.
27. Orus, R. Entanglement and majorization in $(1 + 1)$ -dimensional quantum systems. *Phys. Rev. A* **2005**, *71*, 052327, doi:10.1103/PhysRevA.71.052327.
28. Holzhey, C.; Larsen, F.; Wilczek, F. Geometric and renormalized entropy in conformal field theory. *Nucl. Phys. B* **1994**, *424*, 443–467.
29. Calabrese, P.; Cardy, J. Entanglement entropy and quantum field theory. *J. Stat. Mech.* **2004**, *2004*, P06002, doi:10.1088/1742-5468/2004/06/P06002.
30. Calabrese, P.; Cardy, J. Entanglement entropy and quantum field theory: A non-technical introduction. *Int. J. Quant. Inf.* **2006**, *04*, 429–438, doi:10.1142/S021974990600192X.
31. Casini, H.; Fosco, C.D.; Huerta, M. Entanglement and alpha entropies for a massive Dirac field in two dimensions. *J. Stat. Mech.* **2005**, *2005*, P07007, doi:10.1088/1742-5468/2005/07/P07007.
32. Casini, H.; Huerta, M. Entanglement and alpha entropies for a massive scalar field in two dimensions. *J. Stat. Mech.* **2005**, *2005*, P12012, doi:10.1088/1742-5468/2005/12/P12012.

33. Metlitski, M.A.; Fuertes, C.A.; Sachdev, S. Entanglement entropy in the $O(N)$ model. *Phys. Rev. B* **2009**, *80*, 115122, doi:10.1103/PhysRevB.80.115122.
34. Hertzberg, M.P.; Wilczek, F. Some Calculable Contributions to Entanglement Entropy. *Phys. Rev. Lett.* **2011**, *106*, 050404, doi:10.1103/PhysRevLett.106.050404.
35. Hertzberg, M.P. Entanglement Entropy in Scalar Field Theory. *J. Phys. A* **2013**, *46*, 015402, doi:10.1088/1751-8113/46/1/015402.
36. Mozaffar, M.R.M.; Mollabashi, A. On the Entanglement Between Interacting Scalar Field Theories. *J. High Energy Phys.* **2016**, *2016*, 15, doi:10.1007/JHEP03(2016)015.
37. Mollabashi, A.; Shiba, N.; Takayanagi, T. Entanglement between Two Interacting CFTs and Generalized Holographic Entanglement Entropy. *J. High Energy Phys.* **2014**, *2014*, 185, doi:10.1007/JHEP04(2014)185.
38. Hung, L.Y.; Myers, R.C.; Smolkin, M. Some Calculable Contributions to Holographic Entanglement Entropy. *J. High Energy Phys.* **2011**, *2011*, 39, doi:10.1007/JHEP08(2011)039.
39. Li, H.; Haldane, F.D.M. Entanglement Spectrum as a Generalization of Entanglement Entropy: Identification of Topological Order in Non-Abelian Fractional Quantum Hall Effect States. *Phys. Rev. Lett.* **2008**, *101*, 010504, doi:10.1103/PhysRevLett.101.010504.
40. Chamon, C.; Hamma, A.; Mucciolo, E.R. Emergent Irreversibility and Entanglement Spectrum Statistics. *Phys. Rev. Lett.* **2014**, *112*, 240501, doi:10.1103/PhysRevLett.112.240501.
41. Coleman, S.R. The Fate of the False Vacuum. 1. Semiclassical Theory. *Phys. Rev. D* **1977**, *16*, 2929–2936.
42. Callan, C.G., Jr.; Coleman, S.R. The Fate of the False Vacuum. 2. First Quantum Corrections. *Phys. Rev. D* **1977**, *16*, 1762, doi:10.1103/PhysRevD.16.1762.
43. Coleman, S.R. The Uses of Instantons. In *The Whys of Subnuclear Physics*; Antonino Zichichi, Ed.; The Subnuclear Series; Springer: Boston, MA, USA, 1979; pp. 805–941.
44. Polyakov, A.M. Quark Confinement and Topology of Gauge Groups. *Nucl. Phys. B* **1977**, *120*, 429, doi:10.1016/0550-3213(77)90086-4.
45. Callan, C.G., Jr.; Dashen, R.F.; Gross, D.J. Toward a Theory of the Strong Interactions. *Phys. Rev. D* **1978**, *17*, 2717, doi:10.1103/PhysRevD.17.2717.
46. Schwinger, J.S. Gauge Invariance and Mass. II. *Phys. Rev.* **1962**, *128*, 2425, doi:10.1103/PhysRev.128.2425.
47. Rothe, K.D.; Swieca, J.A. Path Integral Representations for Tunneling Amplitudes in the Schwinger Model. *Ann. Phys.* **1979**, *117*, 382–392.
48. Iso, S.; Murayama, H. Hamiltonian Formulation of the Schwinger Model: Nonconfinement and Screening of the Charge. *Prog. Theor. Phys.* **1990**, *84*, 142, doi:10.1143/PTP.84.142.
49. Azakov, S. The Schwinger model on a circle: Relation between Path integral and Hamiltonian approaches. *Int. J. Mod. Phys. A* **2006**, *21*, 6593, doi:10.1142/S0217751X06034264.
50. Berwanger, D.; Grädel, E. Entanglement—A Measure for the Complexity of Directed Graphs with Applications to Logic and Games. In *Logic for Programming, Artificial Intelligence, and Reasoning*; Springer: Berlin/Heidelberg, Germany, 2005; pp. 209–223.
51. Donetti, L.; Hurtado, P.I.; Munoz, M.A. Entangled networks, synchronization and optimal network topology. *Phys. Rev. Lett.* **2005**, *95*, 188701, doi:10.1103/PhysRevLett.95.188701.
52. De Beaudrap, N.; Giovannetti, V.; Severini, S.; Wilson, R. Interpreting the von Neumann entropy of graph Laplacians, and coentropic graphs. *arXiv* **2013**, arXiv:1304.7946.
53. Valatin, J.G. Comments on the theory of superconductivity. *Il Nuovo Cimento* **1958**, *7*, 843–857.
54. Bogoliubov, N. On the theory of superfluidity. *J. Phys.* **1947**, *11*, 91–92.
55. Fetter, A.; Walecka, J. *Quantum Theory of Many-Particle Systems*; Dover Publications: Mineola, NY, USA, 2003. ISBN 9780486428277
56. Kittel, C. *Quantum Theory of Solids*; Wiley: New York, NY, USA, 1987.
57. Strutinsky, V.M. Shell effects in nuclear physics and deformation energies. *Nucl. Phys. A* **1967**, *95*, 420–442.
58. Svozil, K. Squeezed Fermion states. *Phys. Rev. Lett.* **1990**, *65*, 3341–3343.
59. Bhattacharyya, A.; Hung, L.Y.; Melby-Thompson, C.M. Instantons and Entanglement Entropy. *arXiv* **2017**, arXiv:1703.01611.
60. Giamarchi, T. *Quantum Physics in One Dimension*; International Series of Monographs on Physics; Oxford University Press: Oxford, UK, 2004.
61. Wikipedia: Spectral Graph theory. Available online: https://en.wikipedia.org/wiki/Spectral_graph_theory (accessed on 6 December 2017).

- 62. Griffiths, D.J. *Introduction to Quantum Mechanics*; Pearson Education: London, UK, 2005.
- 63. Coleman, S. *Aspects of Symmetry*; Cambridge University Press: Cambridge, UK, 1985.
- 64. Calabrese, P.; Cardy, J. Quantum quenches in 1 + 1 dimensional conformal field theories. *J. Stat. Mech.* **2016**, *1606*, 064003, doi:10.1088/1742-5468/2016/06/064003.
- 65. Casini, H.; Huerta, M. Entanglement entropy in free quantum field theory. *J. Phys. A* **2009**, *42*, 504007, doi:10.1088/1751-8113/42/50/504007.
- 66. Weinberg, S. *The Quantum Theory of Fields, Volume 1: Foundations*; Cambridge University Press: Cambridge, UK, 1995.
- 67. Bianchi, E.; Hackl, L.; Yokomizo, N. Entanglement entropy of squeezed vacua on a lattice. *Phys. Rev. D* **2015**, *92*, 085045, doi:10.1103/PhysRevD.92.085045.
- 68. Hiroshima, T. Decoherence and Entanglement in Two-mode Squeezed Vacuum States. *Phys. Rev. A* **2001**, *63*, 022305, doi:10.1103/PhysRevA.63.022305.



© 2017 by the authors. Licensee MDPI, Basel, Switzerland. This article is an open access article distributed under the terms and conditions of the Creative Commons Attribution (CC BY) license (<http://creativecommons.org/licenses/by/4.0/>).