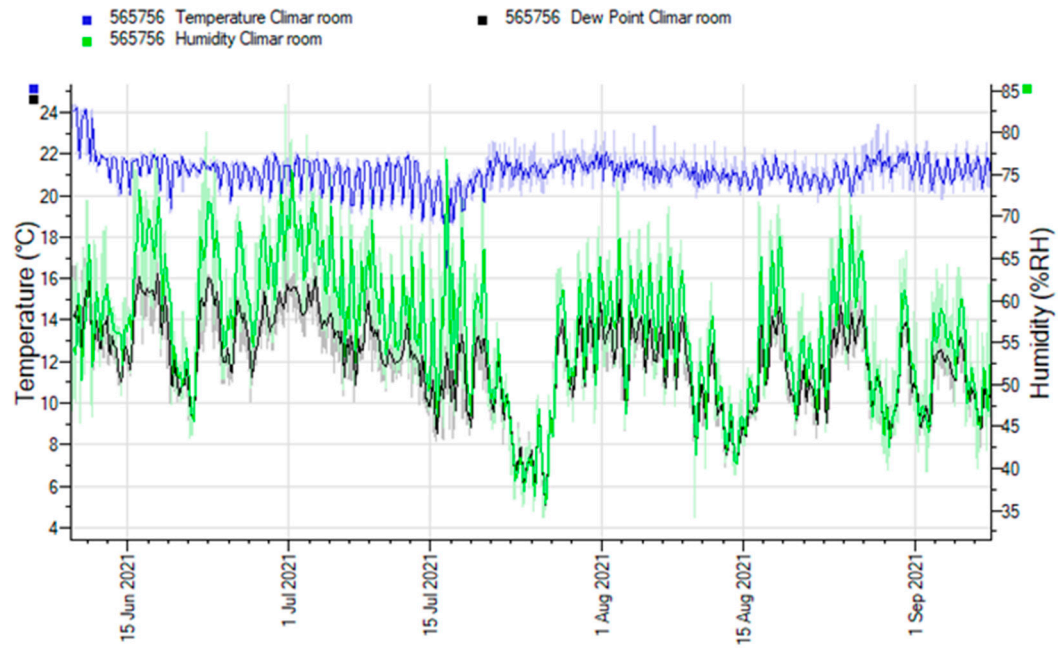
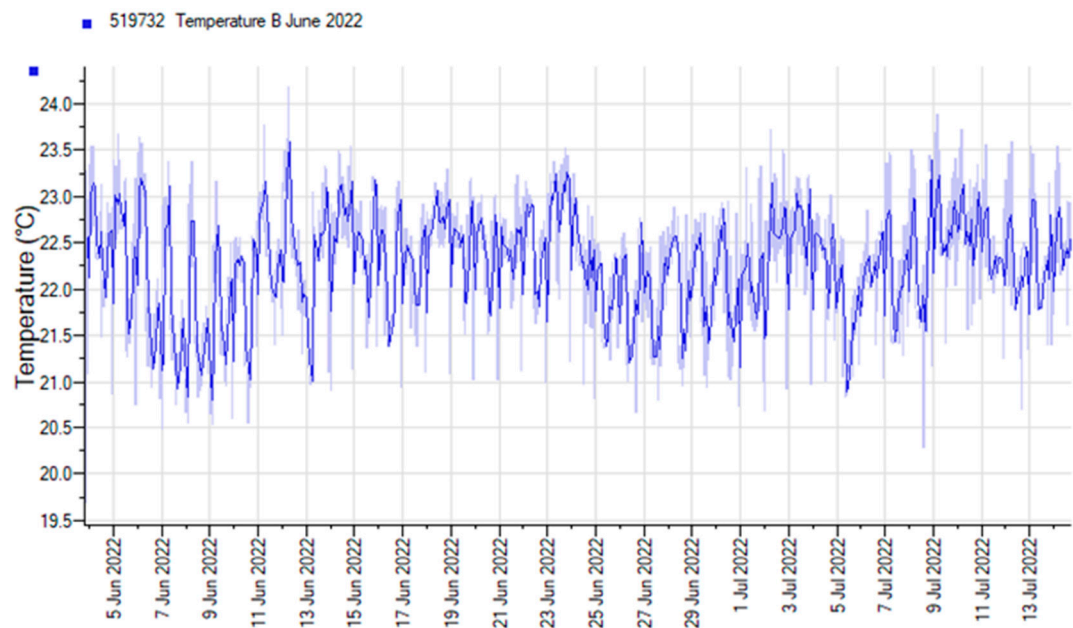


A.

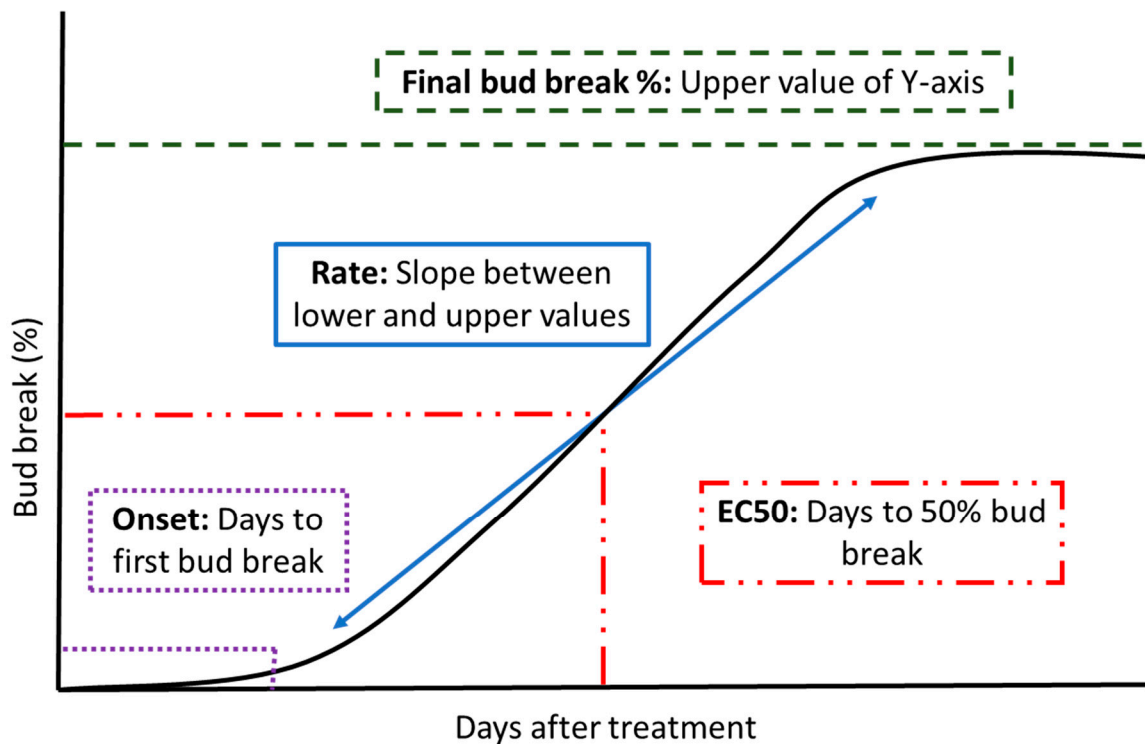
# Climar room



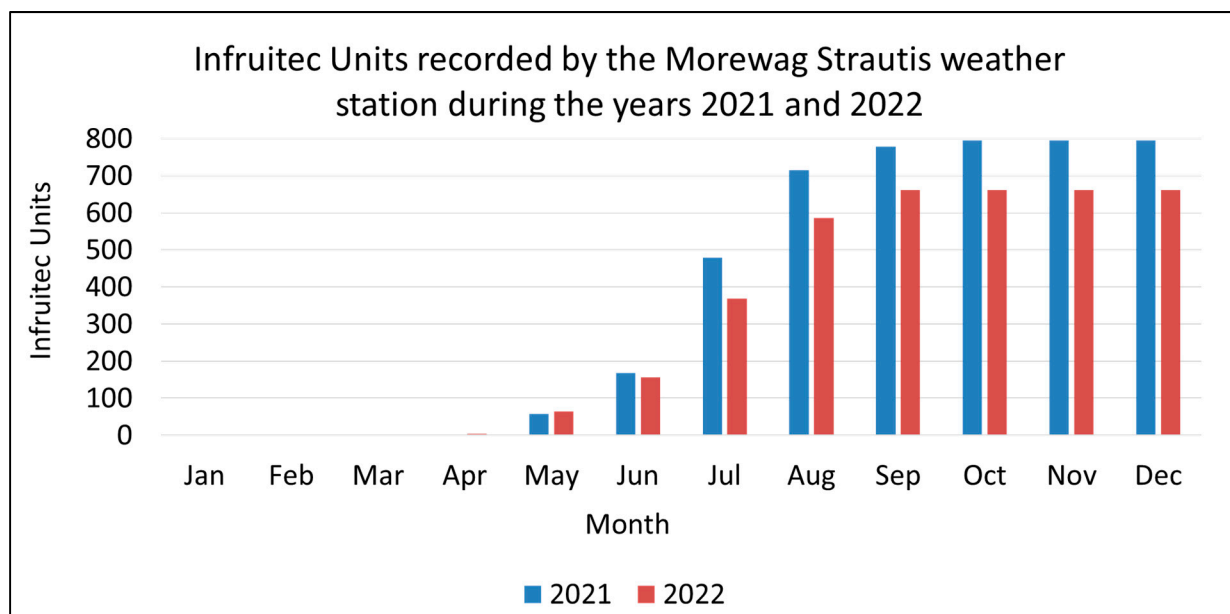
B.



**Figure S1.** Example of growth room temperatures during glasshouse assays were maintained as approx. 22°C during (A) 2021 and (B) 2022 glasshouse dormancy-release assays.



**Figure S2.** Visual representation and definitions of four parameters used to assess bud-break efficacy of all treatments tested in current study. These parameters are bud-break onset, rate, EC50, and final bud-break percentage.



**Figure S3.** Infruitec units accumulated in the *Vitis vinifera* Crimson Seedless block on Windmeul farm, Paarl over two years.

**Table S1** Summary of experiment dates and CU information for experiments evaluating the effects of HC 3%, MIX2, SNH, SNL, PBXH, PBXL, and dH<sub>2</sub>O, in in *V. vinifera* Crimson Seedless (CS) buds after, 100, 200 and 250 CUA.

Final total CUA of SNCs	Date of sample collection	CUA of by canes at time of sample collection
100	10-Jun-22	95
200	30-Jun-22	160
250	12-Jul-22	245