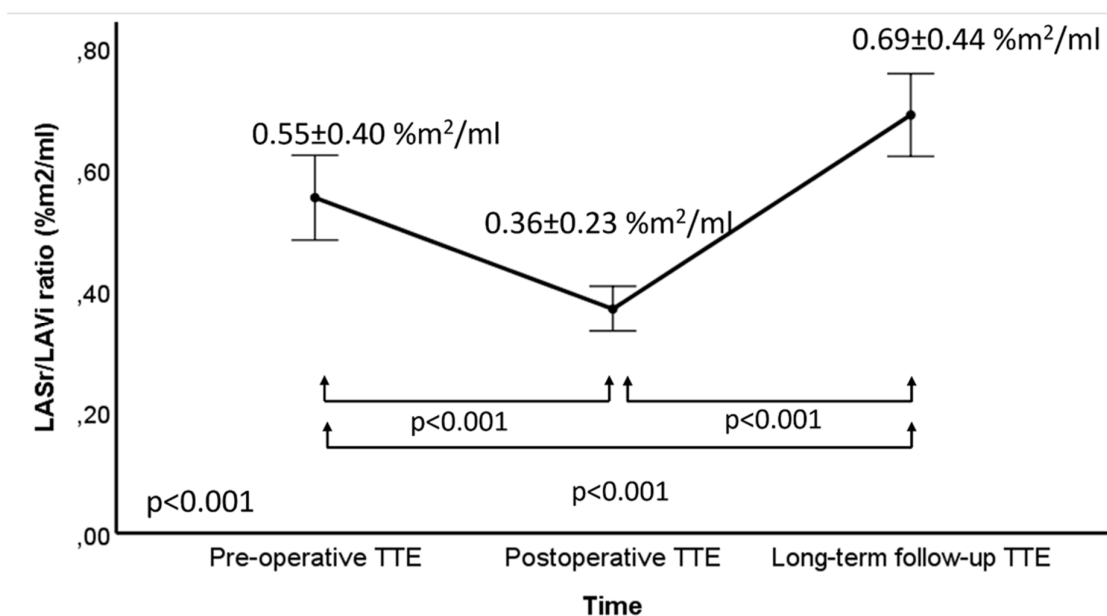




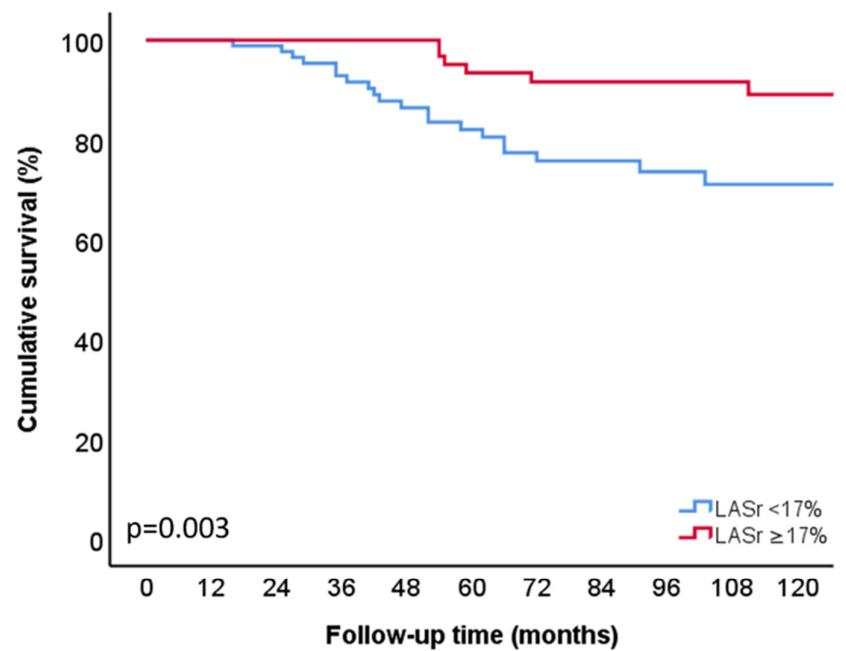
Supplementary Materials

## Left Atrial Remodeling after Mitral Valve Repair for Primary Mitral Regurgitation: Evolution over Time and Prognostic Significance



**Figure S1.** Changes in left atrial reservoir strain over time, corrected for left atrial volume.

This panel shows the changes in LASr, corrected for LAVi from baseline to postoperative -and long-term follow-up.



Number at risk												
—	LASr <17%	112	108	102	88	74	66	53	46	38	35	18
—	LASr ≥17%	114	102	92	85	80	67	59	50	45	40	23

**Figure S2.** Kaplan-Meier survival curve for all-cause mortality according to LASr at long-term follow-up.

Time to all-cause mortality according to LASr at long-term follow-up: LASr <17% (median value) (blue) and LASr ≥17% (red).

LASr = left atrial reservoir strain.