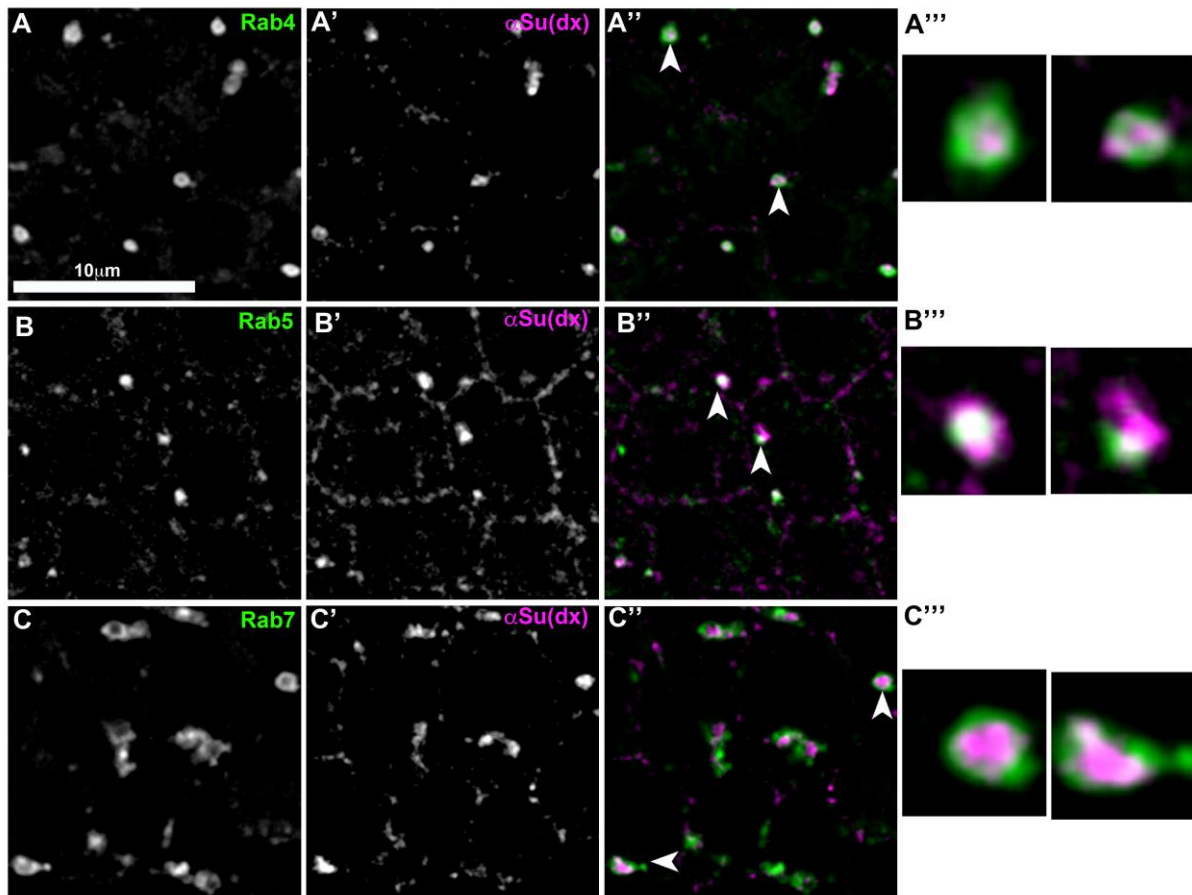
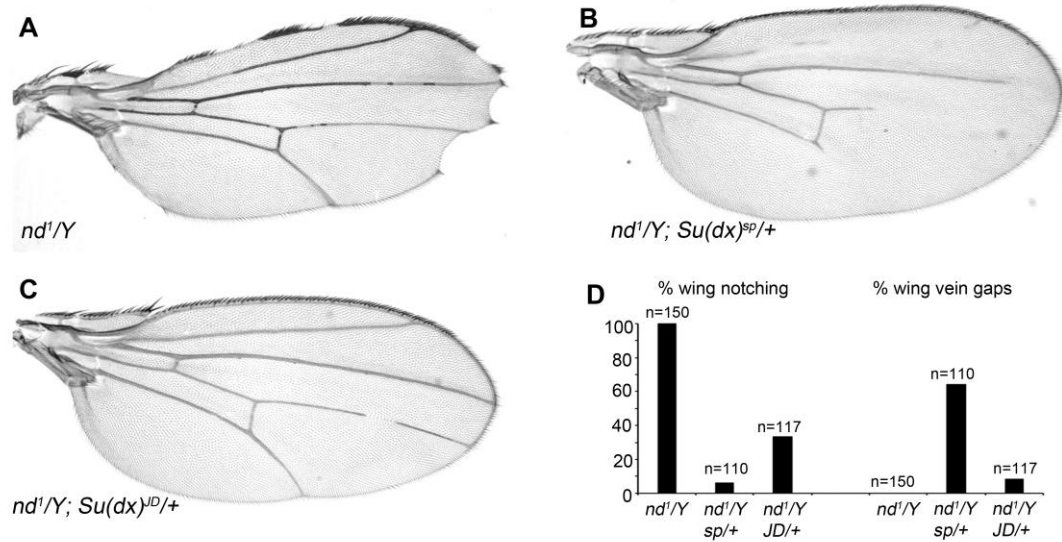


Supplemental figure legends



Supplemental Figure S1. Localisation of Su(dx) in the endocytic pathway. Anti Su(dx) (magenta) localisation in organelles marked with endogenously tagged (**A-A'''**) Rab4-EYFP, (**B-B'''**) Rab5-EYFP and (**C-C'''**) Rab7-EYFP (Green). Arrow heads mark endosomes depicted in enlarged images in **A'''**, **B'''** and **C'''**. Immunostaining performed on egg chamber follicle cells.



Supplemental Figure S2. Genetic interaction of *Su(dx)* alleles with *Notch* hypomorphic allele *nd*¹. (A) Wing of *nd*¹/*Y* fly showing extensive notching around the wing margin. (B) Heterozygous *Su(dx)*^{sp} allele, suppresses the wing margin notching of *nd*¹/*Y* and introduces strong wing vein gap phenotype. (C) Heterozygous *Su(dx)*^{JD} allele, also suppresses the wing margin notching of *nd*¹/*Y* and introduces wing vein gap phenotype but these are smaller and less penetrant than in the interaction with *Su(dx)*^{sp}. (D) Quantification of genetic interactions depicted in A-C. *Su(dx)*^{JD} allele behaves in a qualitatively similar manner to *Su(dx)*^{sp} but with a less penetrant outcome.