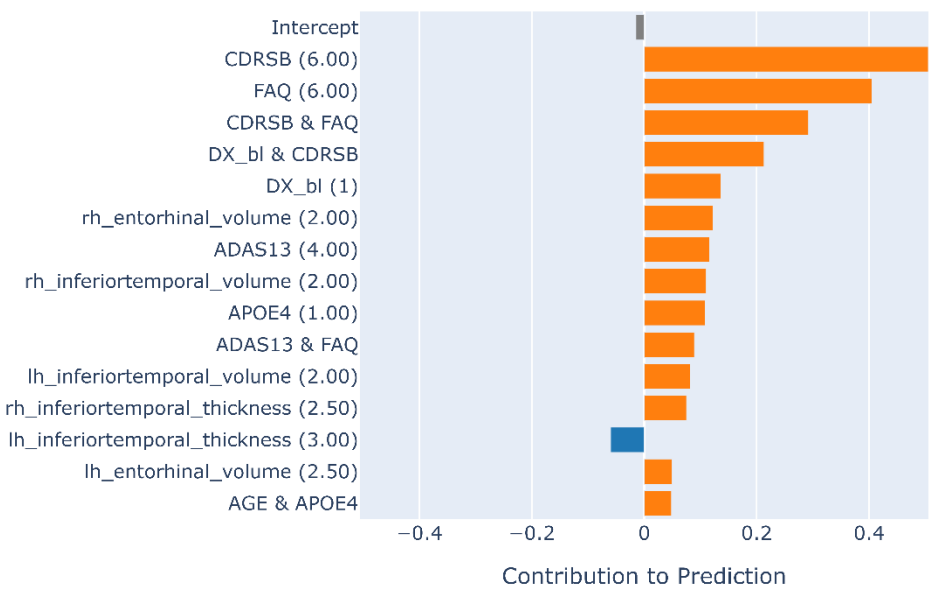


Supplementary

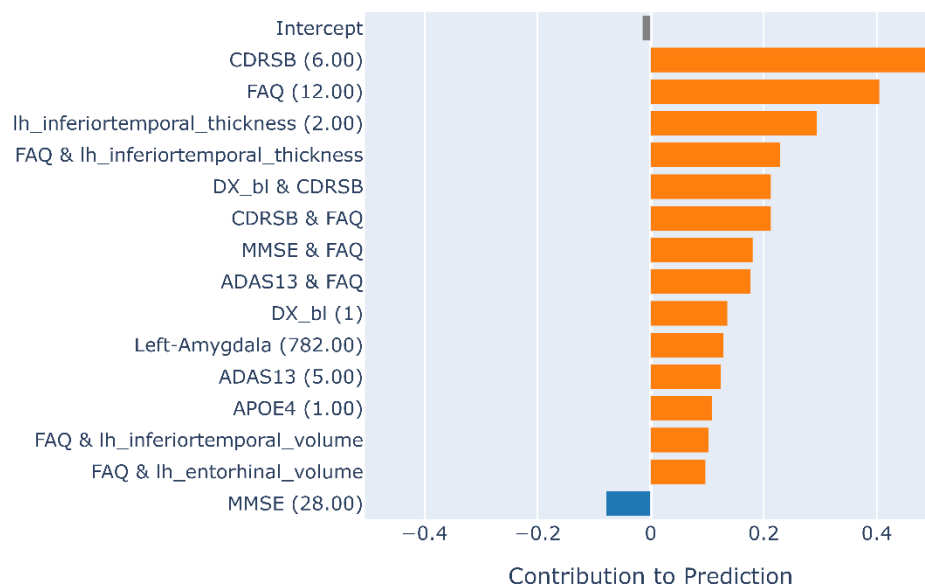
For a more detailed visualization of the results of local explanation of EBM model, consider **Supplementary Figure S1**

Local Explanation (Actual Class: 1 | Predicted Class: 1  
Pr(y = 1): 0.919)



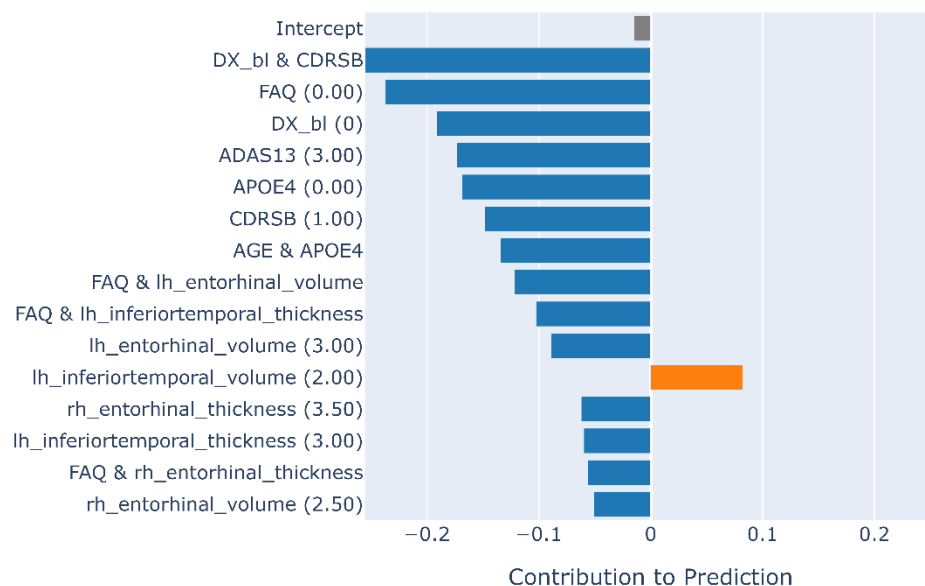
Supplementary Figure S1. The local interpretation provided by EBM model of Patient 1.

Local Explanation (Actual Class: 1 | Predicted Class: 1  
Pr(y = 1): 0.950)



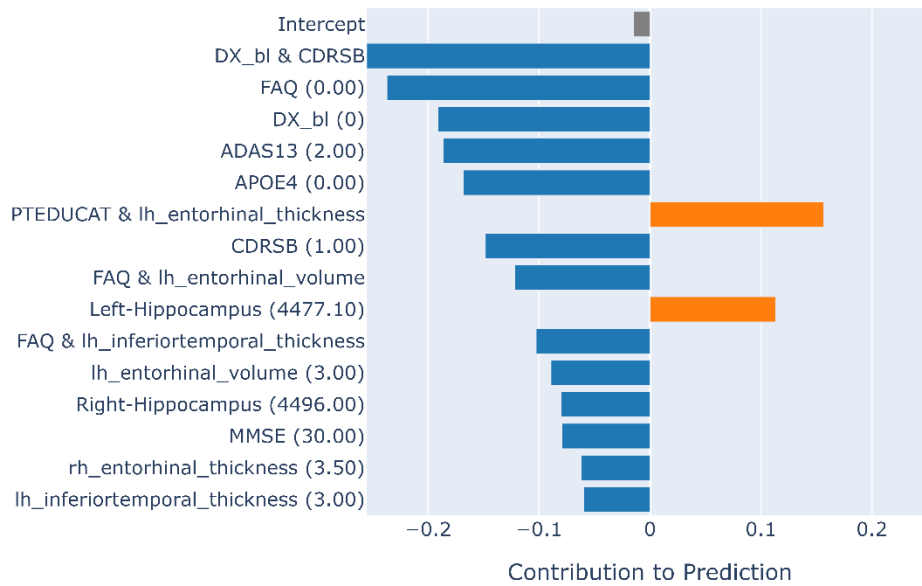
Supplementary Figure S2. The local interpretation provided by EBM model of Patient 2.

Local Explanation (Actual Class: 0 | Predicted Class: 0  
Pr(y = 0): 0.866)



Supplementary Figure S3. The local interpretation provided by EBM model of Patient 3.

Local Explanation (Actual Class: 0 | Predicted Class: 0  
 $\Pr(y = 0): 0.857$ )



Supplementary Figure S4. The local interpretation provided by EBM model of Patient 4.