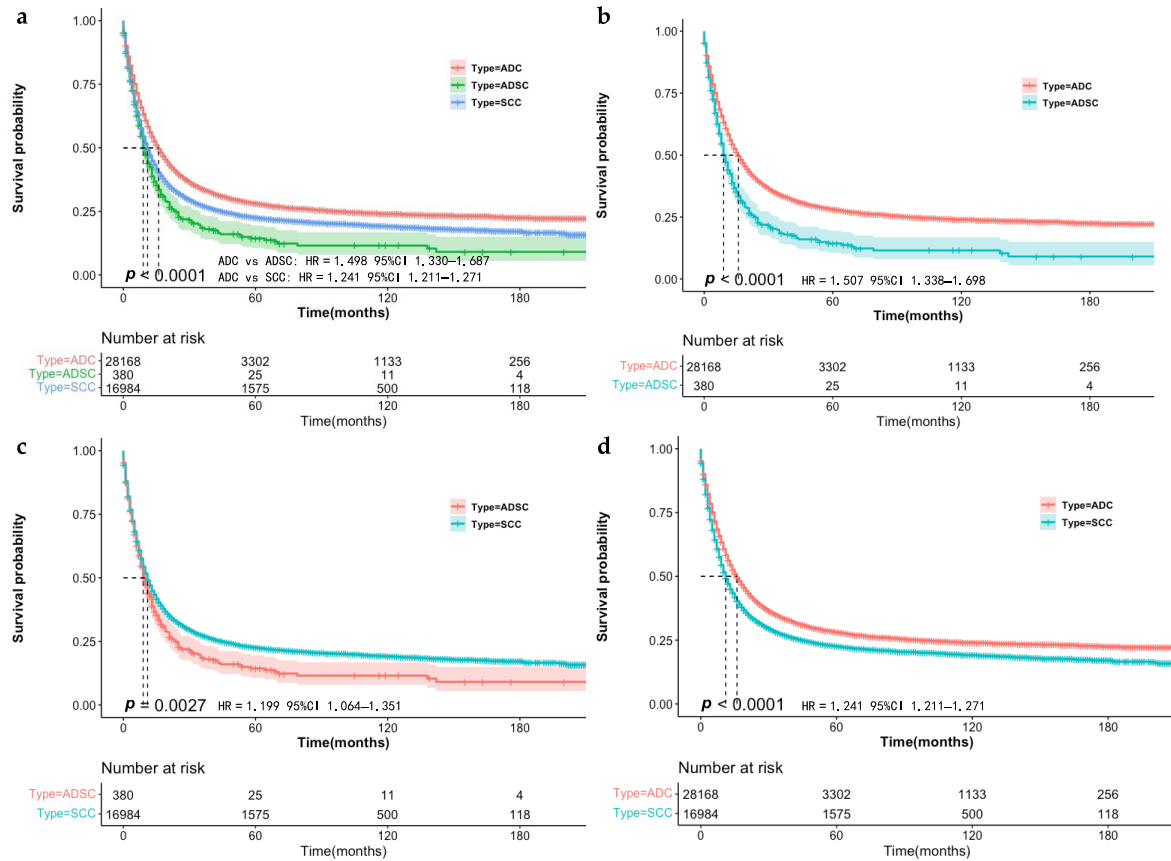


Supplementary Figure S1. Survival curves of EC with three different histological classifications in the raw data.



Supplementary Table S1. Univariable and multivariable Cox proportion hazard regression analyses for mortality in 380 ADSC patients.

Variables	Univariable analysis			Multivariable analysis		
	HR	95% CI	P	HR	95% CI	P
Sex						
Female	1	reference		1	reference	
Male	0.895	0.670–1.195	0.451	1.070	0.784–1.461	0.670
Age						
<65	1	reference		1	reference	
>64	1.083	0.854–1.373	0.513	0.938	0.727–1.209	0.619
Surgery						
None	1	reference		1	reference	
Surgical resection	0.377	0.281–0.505	0.000	0.380	0.271–0.532	0.000
Unknown	0.944	0.399–2.354	0.903	0.713	0.269–1.886	0.495
Radiotherapy						
No	1	reference		1	reference	
Yes	0.565	0.443–0.719	0.000	0.719	0.545–0.947	0.019
Unknown	0.301	0.111–0.818	0.018	0.238	0.084–0.647	0.007
Chemotherapy						
No	1	reference		1	reference	
Yes	0.539	0.421–0.690	0.000	0.556	0.416–0.744	0.000
Marital status						

Unmarried	1	reference		1	reference	
Married	0.723	0.567–0.922	0.009	0.887	0.682–1.154	0.372
Unknown	1.318	0.690–2.517	0.403	1.759	0.852–3.632	0.127
Grade						
I-II	1	reference		1	reference	
III-IV	1.346	0.924–1.960	0.122	1.314	0.889–1.943	0.171
Unknown	1.879	1.215–2.908	0.005	1.511	0.958–2.382	0.076
Location						
Upper thoracic esophagus	1	reference		1	reference	
Middle thoracic esophagus	0.743	0.366–1.506	0.410	0.962	0.460–2.011	0.917
Lower thoracic esophagus	0.668	0.341–1.308	0.239	1.045	0.515–2.119	0.903
The position of thoracic esophagus is unknown	0.866	0.428–1.752	0.689	1.152	0.554–2.394	0.705
T						
T1	1	reference		1	reference	
T2	0.941	0.489–1.810	0.856	1.327	0.671–2.625	0.415
T3	0.670	0.436–1.029	0.068	0.849	0.539–1.338	0.481
T4	1.587	0.966–2.606	0.068	1.312	0.770–2.235	0.317
Tx	1.288	1.894–1.856	0.174	1.112	0.696–1.777	0.658
N						
N0	1	reference		1	reference	
N1	0.922	0.672–1.266	0.617	1.063	0.754–1.500	0.726
N2	1.167	1.861–1.583	0.319	1.585	0.881–2.853	0.125
M						
M0	1	reference		1	reference	
M1	2.268	1.672–3.078	0.000	1.402	0.957–2.054	0.083
Mx	1.525	1.145–2.032	0.004	0.826	0.466–1.466	0.514