

Figure S1. MTT assay on C2C12 myotube cultures exposed for 24 and 48 h to different OC concentrations. The results are representative of three experiments, with $n = 8$ for each experimental condition. Data are expressed as means \pm SEM. Significance of the differences: *— $p < 0.05$ versus Co.

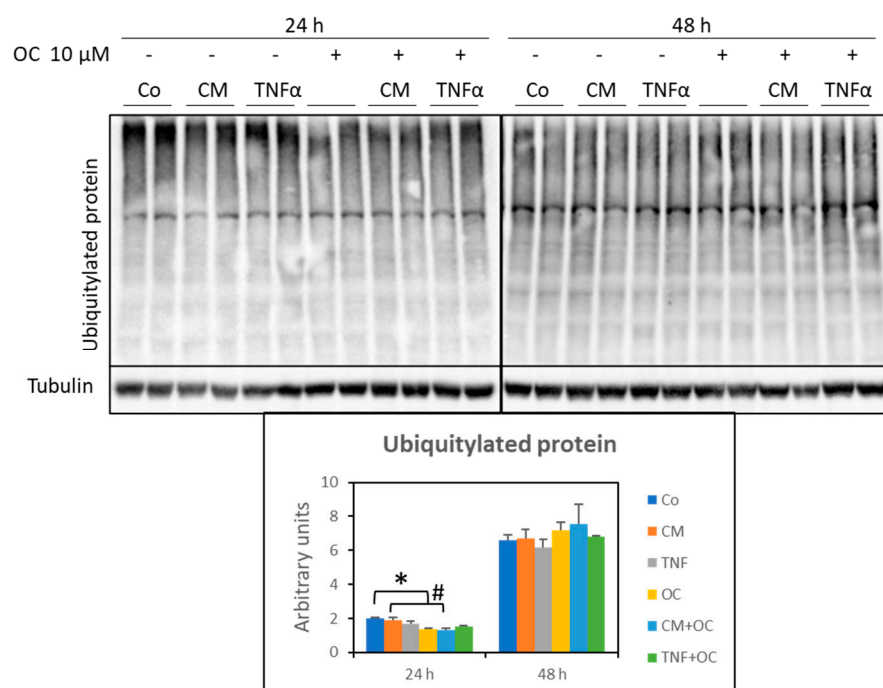


Figure S2. Ubiquitylated protein levels in myotube cultures exposed for 24 and 48 h to OC, CM-C26 or TNF- α . The results are representative of three experiments, and each experimental condition is duplicated. Data are expressed as means \pm SEM. Significance of the differences: *— $p < 0.05$ vs. Co; #— $p < 0.05$ vs. CM-C26.

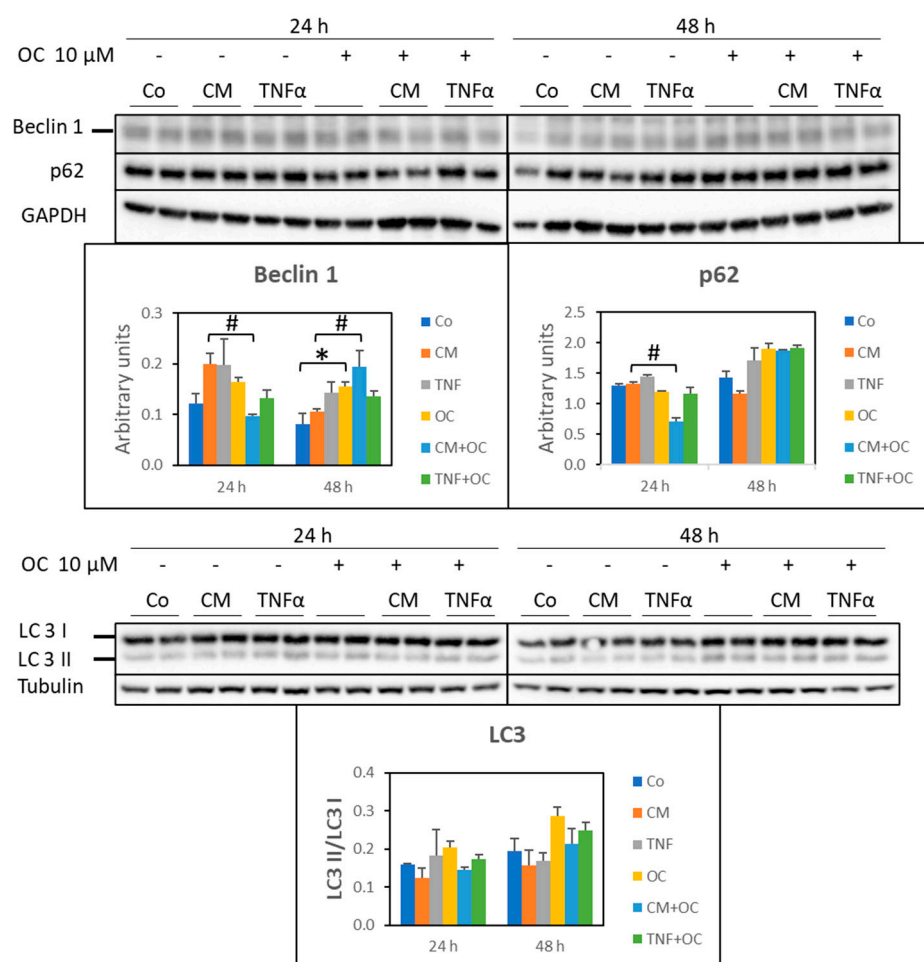


Figure S3. Markers of autophagy in myotube cultures exposed for 24 and 48 h to OC, CM-C26 or TNF- α . The results are representative of three experiments, and each experimental condition is duplicated. Data are expressed as means \pm SEM. Significance of the differences: *— $p < 0.05$ vs. Co; #— $p < 0.05$ vs. CM-C26.