

Figure S1. Glycosylation analysis of ORF2^S (tPA) protein. HEV ORF2^S (tPA) proteins were denatured and digested with indicated glycosidases (+) or not (-). The dashed line shows the mobility shift on nitrocellulose filter membrane of ORF2^S (tPA) proteins to assess the extent of de-glycosylation.

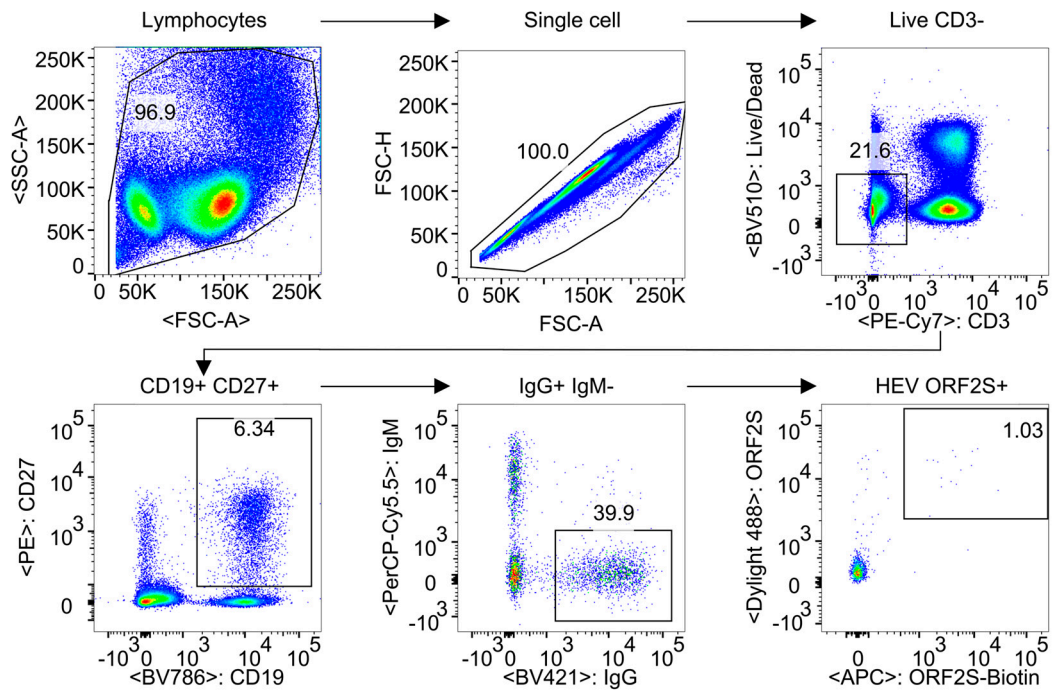


Figure S2. Flow cytometry analysis of cell. Gating strategy for recognizing ORF2^S-specific memory B cells through BD Arial III flow cytometer. FSC-A, forward scatter area; SSC-A, side scatter area.