

Supplementary Materials

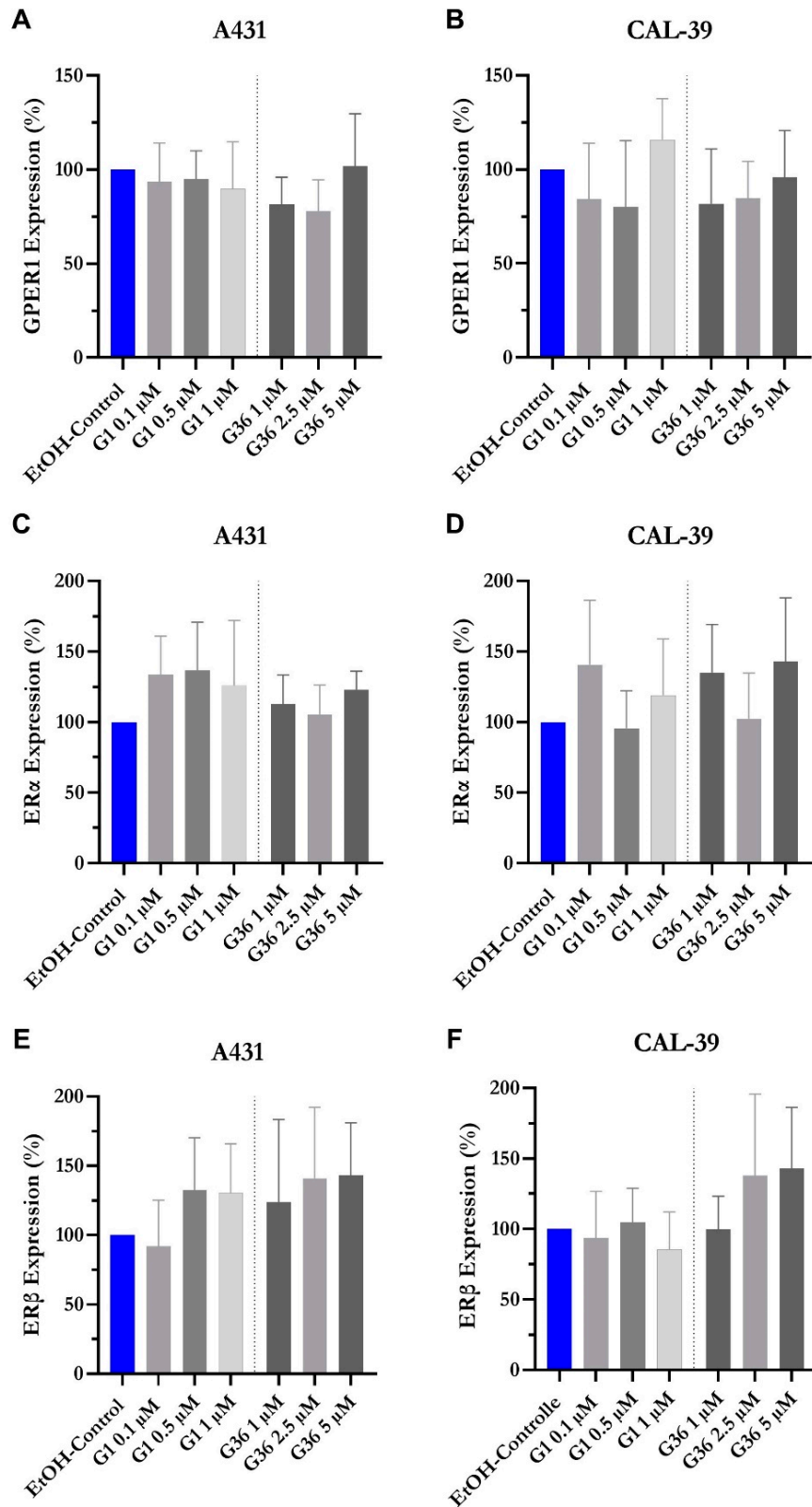


Figure S1. Effects of GPER1 agonist G1 and antagonist G36 on estrogen receptor expression in vulvar carcinoma cells. Expression of GPER1 (A,B), ER α (C,D), and ER β (E,F) after treatment with G1 or G36 on vulvar carcinoma cells A431 (A,C,E) and CAL-39 (B,D,F). $n = 3$ (B), $n = 4$ (A,C-F).

Table S1. Densitometric evaluation of the effects of GPER1 agonist G1 and antagonist G36 on expression of GPER1 (A,B), ER α (C,D), and ER β (E,F) in A431 (A–E) and CAL-39 (B–F) vulvar carcinoma cells. Mean \pm SEM % of control (= 100%).

(A)	Treatment	Mean (%)	SEM	<i>n</i>
	Ethanol control	100.00	0.00	4
	G1 0.1 μ M	93.40	20.84	4
	G1 0.5 μ M	95.05	15.07	4
	G1 1 μ M	89.73	25.12	4
	G36 1 μ M	81.59	14.29	4
	G36 2.5 μ M	78.12	16.47	4
	G36 5 μ M	101.99	27.68	4
(B)	Treatment	Mean	SEM	<i>n</i>
	Ethanol control	100.00	0.00	3
	G1 0.1 μ M	84.27	29.72	3
	G1 0.5 μ M	80.24	35.03	3
	G1 1 μ M	115.76	21.87	3
	G36 1 μ M	81.76	29.17	3
	G36 2.5 μ M	84.69	19.65	3
	G36 5 μ M	95.96	24.69	3
(C)	Treatment	Mean	SEM	<i>n</i>
	Ethanol control	100.00	0.00	4
	G1 0.1 μ M	133.64	27.28	4
	G1 0.5 μ M	136.70	34.18	4
	G1 1 μ M	126.08	46.03	4
	G36 1 μ M	112.98	20.42	4
	G36 2.5 μ M	105.37	21.02	4
	G36 5 μ M	123.06	13.05	4
(D)	Treatment	Mean	SEM	<i>n</i>
	Ethanol control	100.00	0.00	4
	G1 0.1 μ M	140.81	45.68	4
	G1 0.5 μ M	95.72	26.48	4
	G1 1 μ M	119.13	39.77	4
	G36 1 μ M	135.00	34.24	4
	G36 2.5 μ M	102.47	32.32	4
	G36 5 μ M	142.84	45.29	4
(E)	Treatment	Mean	SEM	<i>n</i>
	Ethanol control	100.00	0.00	4
	G1 0.1 μ M	92.03	33.18	4
	G1 0.5 μ M	132.60	37.71	4
	G1 1 μ M	130.47	35.42	4
	G36 1 μ M	123.89	59.57	4
	G36 2.5 μ M	141.02	51.20	4
	G36 5 μ M	143.29	37.72	4
(F)	Treatment	Mean	SEM	<i>n</i>
	Ethanol control	100.00	0.00	4
	G1 0.1 μ M	93.75	33.04	4
	G1 0.5 μ M	104.93	23.91	4
	G1 1 μ M	85.57	26.59	4
	G36 1 μ M	99.69	23.64	4
	G36 2.5 μ M	137.88	57.89	4
	G36 5 μ M	142.85	43.33	4