

Disclosing the biocide activity of α -Ag_{2-2x}Cu_xWO₄ ($0 \leq x \leq$

0.16) solid solutions

Paula Fabiana dos Santos Pereira^{1,2}, Camila Cristina De Foggi³, Amanda Fernandes Gouveia^{2,4}, Ivo Mateus Pinatti⁵, Luís Antônio Cabral⁶, Eva Guillamon², Iván Sorribes², Miguel A. San-Miguel⁴, Carlos Eduardo Vergani⁷, Alexandre Zirpoli Simões⁸, Edison Z. da Silva⁶, Laécio Santos Cavalcante⁹, Rosa Llusar², Elson Longo¹, Juan Andrés^{2*}

¹CDMF, LIEC, Department of Chemistry, Federal University of São Carlos (UFSCar), P.O. Box 676, 13565-905 São Carlos, SP, Brazil

²Department of Physical and Analytical Chemistry, University Jaume I (UJI), Castelló 12071, Spain

³Federal University of Rio Grande do Sul, Faculty of Dental Sciences, Department of Conservative Dentistry, 90035-004, Rio Grande do Sul, RS, Brazil

⁴Institute of Chemistry, State University of Campinas (Unicamp), 13083-859 Campinas, SP, Brazil

⁵Department of Chemistry, Federal University of Maranhao, Avenida dos Portugueses, 1966, São Luís, MA, 65080-805, Brazil

⁶Institute of Physics, "Gleb Wataghin" (IFGW), State University of Campinas, 13083-859 Campinas, SP, Brazil

⁷São Paulo State University (UNESP), P. O. Box 1680, 14801-903, Araraquara-SP, Brazil

⁸Faculty of Engineering of Guaratinguetá, São Paulo State University (UNESP), 12516-410, Guaratinguetá, SP, Brazil

⁹PPGQ-GERATEC, Universidade Estadual do Piauí, Rua: João Cabral, N. 2231, P.O. Box 381, 64002-150, Teresina-PI, Brazil

*Corresponding author. E-mail address: andres@qfa.uji.es

Supplementary Material (SM)

Figures

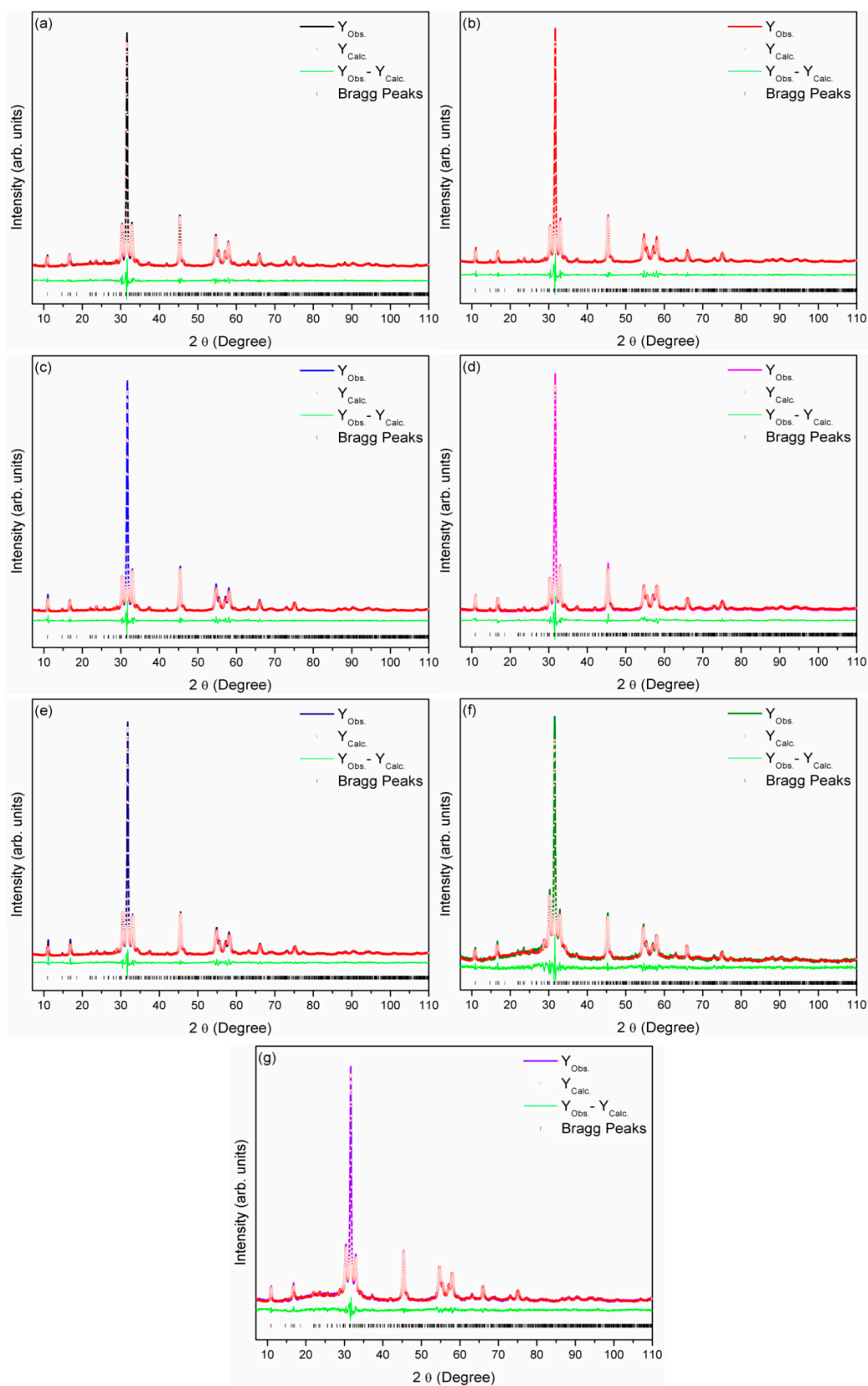


Figure S1. Rietveld refinement plot of the α - $\text{Ag}_{2-2x}\text{Cu}_x\text{O}_4$ solid solutions with: (a) $x = 0.00$, (b) $x = 0.005$, (c) $x = 0.01$, (d) $x = 0.02$, (e) $x = 0.04$, (f) $x = 0.08$, and (g) $x = 0.16$.

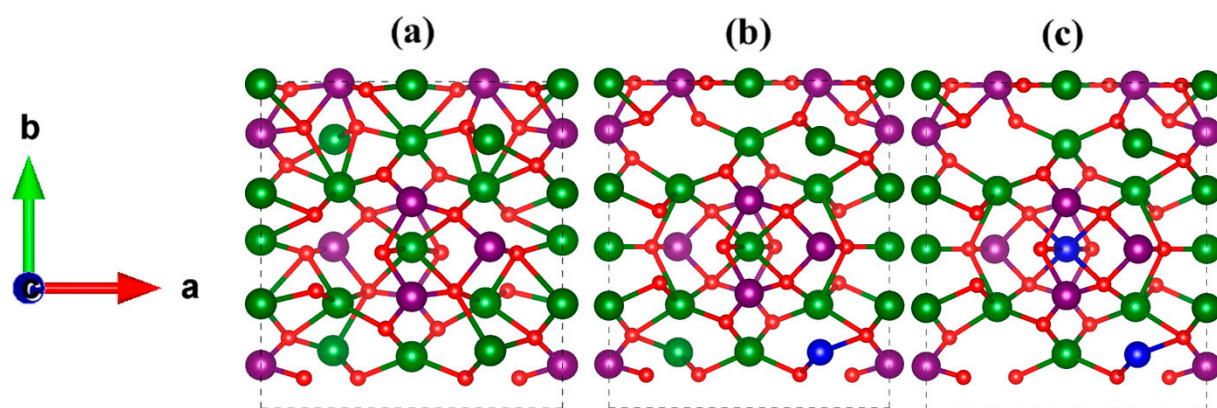


Figure S2. Calculated geometries for α - Ag_2WO_4 undoped (a), doped by one copper atom (b) and doped by two copper atoms (c). The Cu, Ag, W, and O atoms are represented by blue, green, purple, and red colors, respectively.

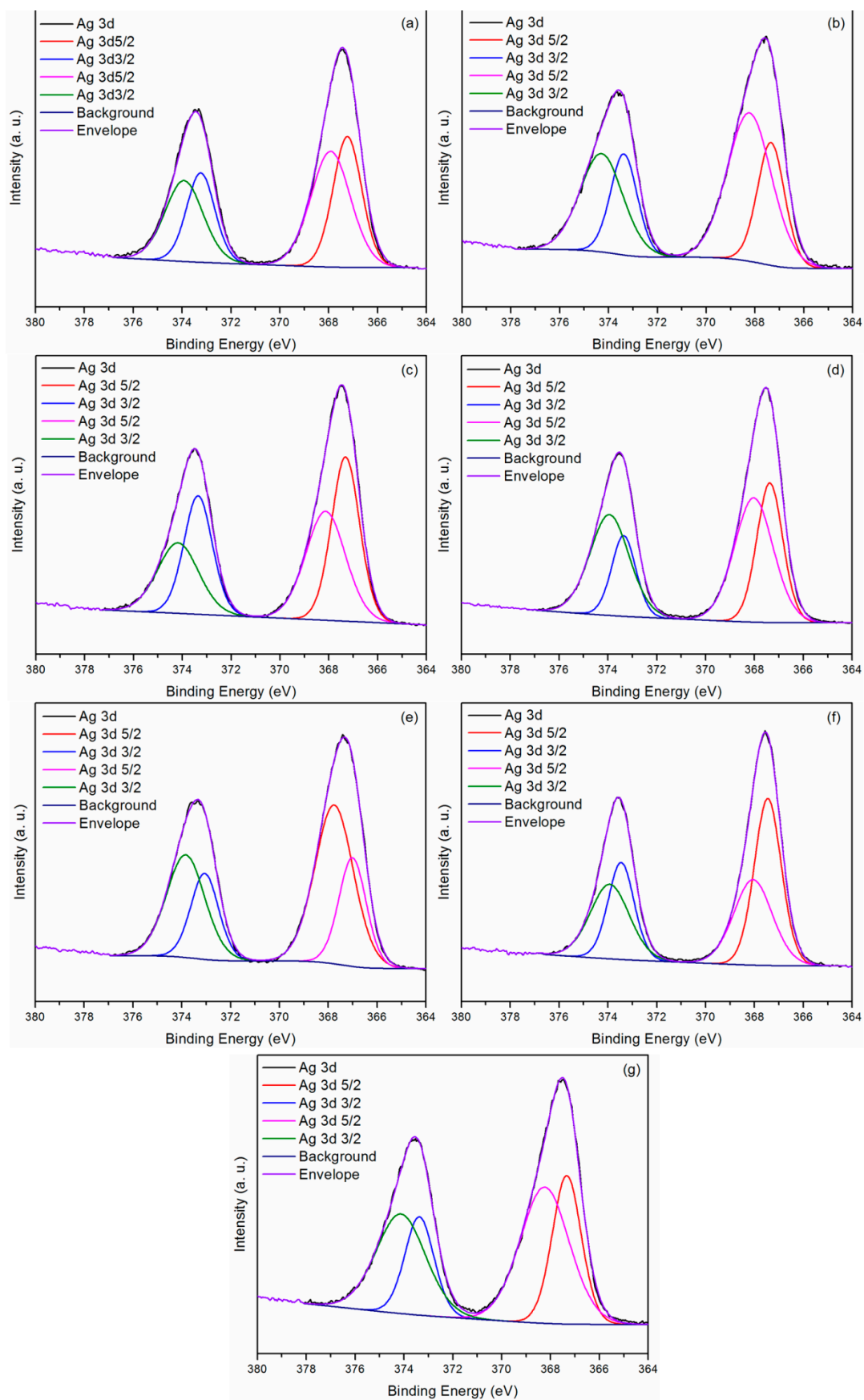


Figure S3. Core level spectrum of (a)-(g) Ag-3d; (h)-(n) W-4f and (o)-(u) O-1s.

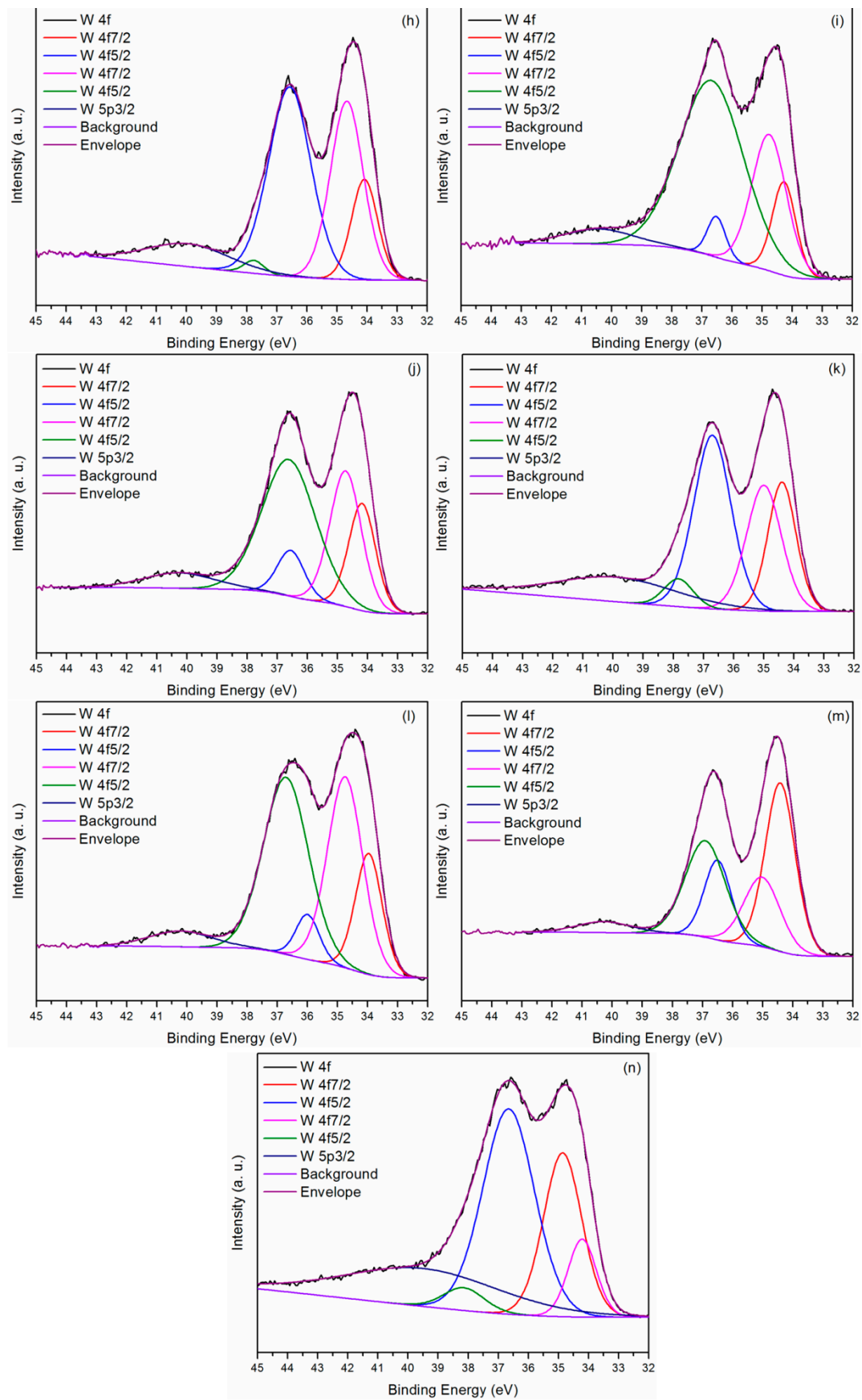


Figure S3 (cont.). Core level spectrum of (a)-(g) Ag-3d; (h)-(n) W-4f and (o)-(u) O-1s.

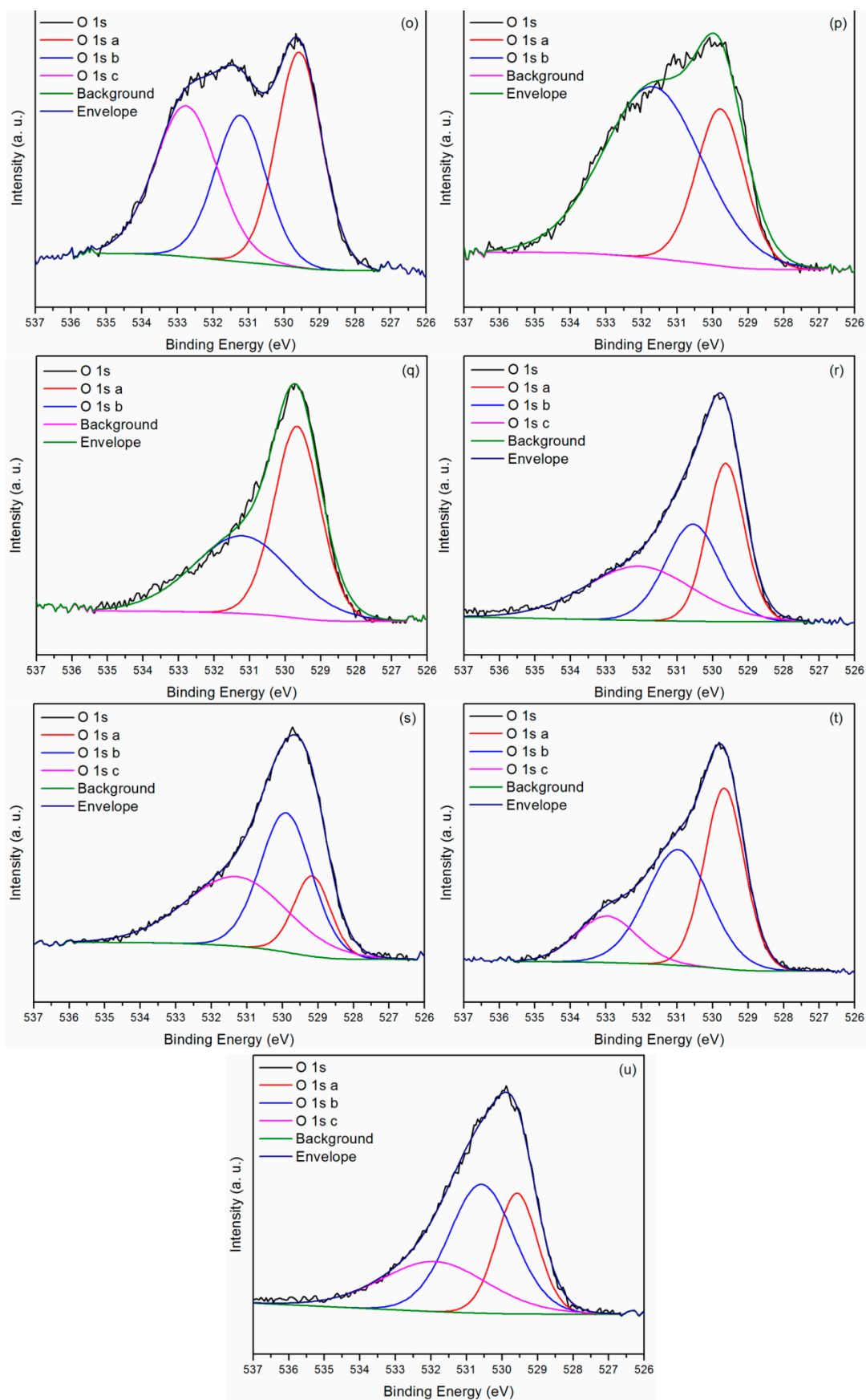


Figure S3 (cont.). Core level spectrum of (a)-(g) Ag-3d; (h)-(n) W-4f and (o)-(u) O-1s.

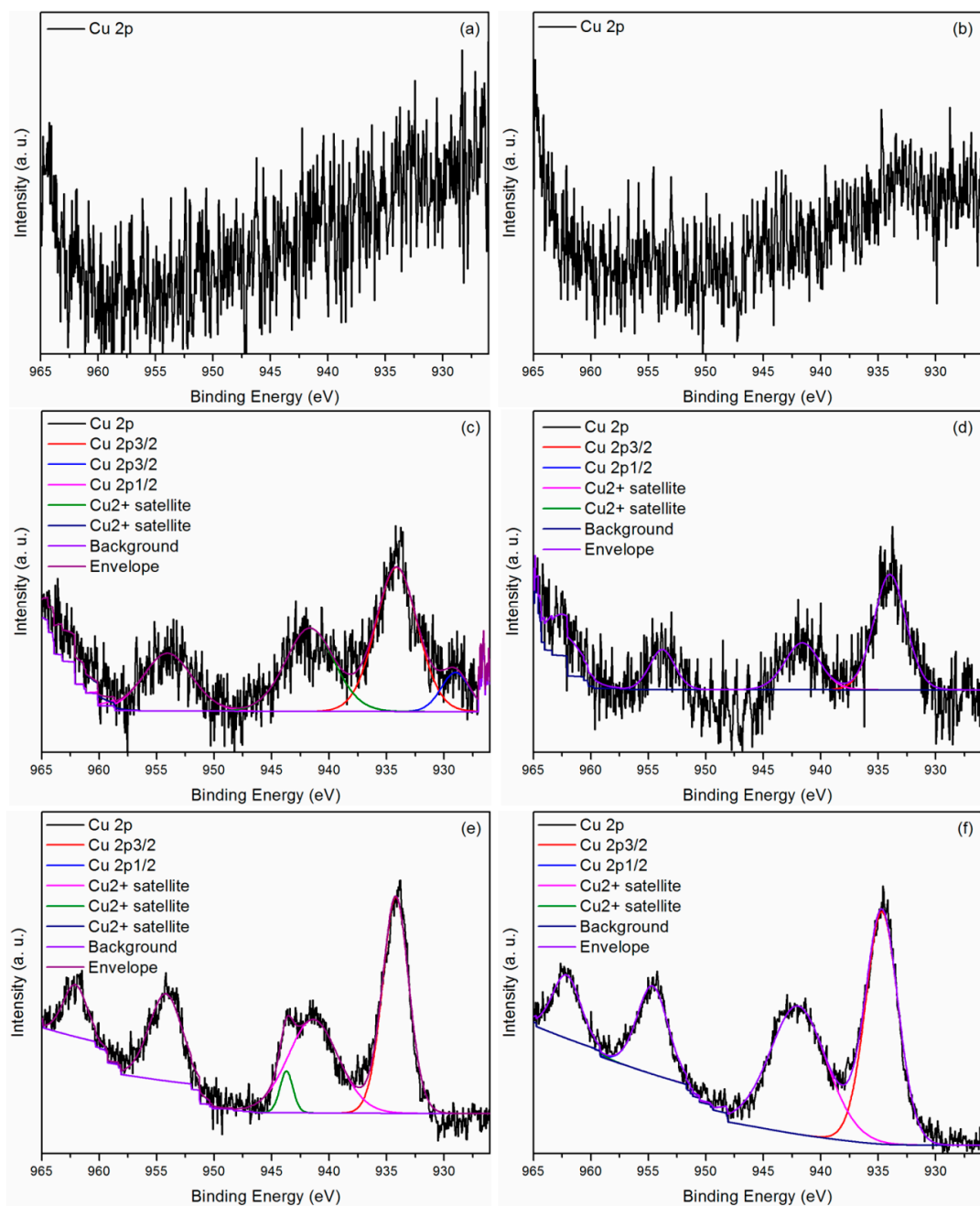


Figure S4. Core level spectrum of Cu-2p of the α -Ag_{2-2x}Cu_xO₄ solid solutions with (a) $x = 0.005$; (b) $x = 0.01$; (c) $x = 0.02$; (d) $x = 0.04$; (e) $x = 0.08$; and (f) $x = 0.16$.

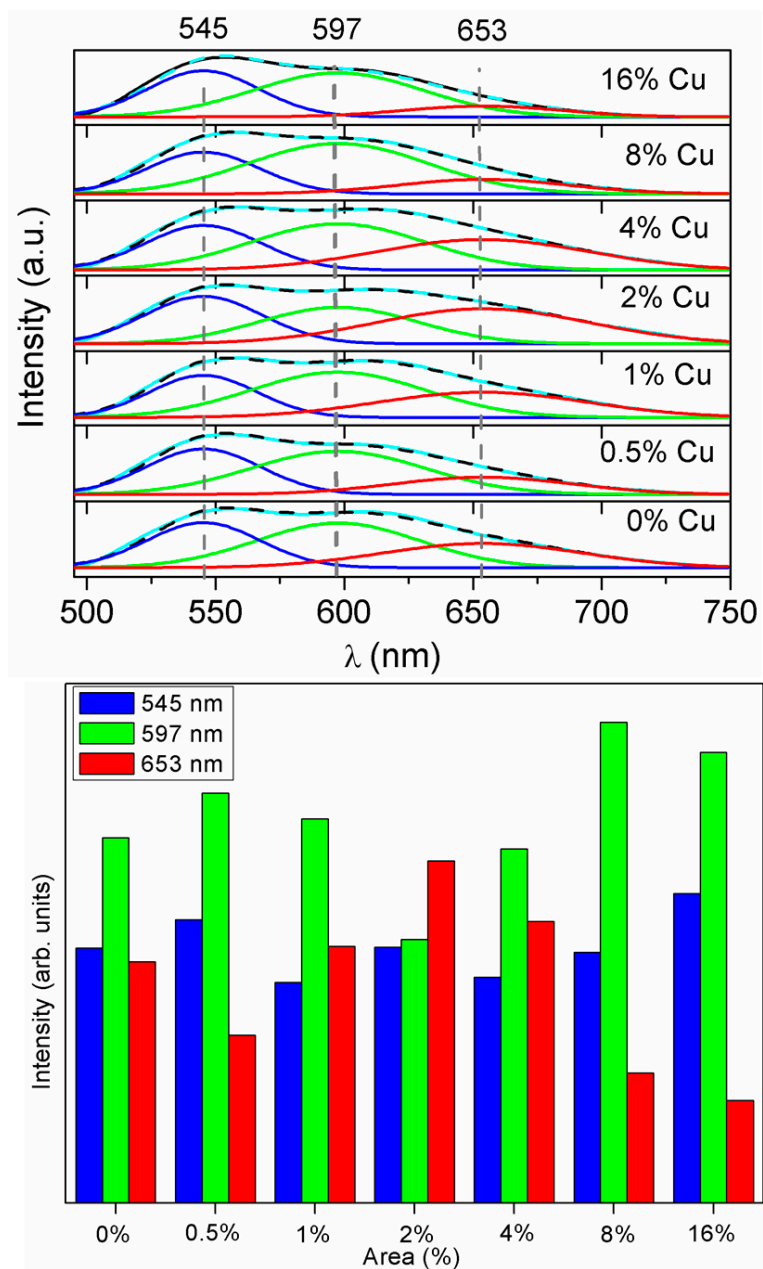


Figure S6. Deconvolution of PL spectra of $\alpha\text{-Ag}_{2-2x}\text{Cu}_x\text{O}_4$ ($0 \leq x \leq 0.16$) solid solutions and area percentage of each color component corresponding to the emission peak.

Tables

Table S1. Lattice parameters, unit cell volume and statistical parameters of quality obtained by Rietveld refinements for the $\alpha\text{-Ag}_{2-2x}\text{Cu}_x\text{WO}_4$ ($0 \leq x \leq 0.16$) solid solutions.

Refined formula	Lattice Parameters			Cell volume (Å ³)	R _{Bragg} (%)	χ ² (%)	R _{wp} (%)	R _p (%)
	a (Å)	b (Å)	c (Å)					
α-Ag_{2-2x}Cu_xWO₄								
<i>x</i> = 0.00	10.880(0)	12.027(3)	5.901(2)	772.22(7)	2.06	1.60	8.79	6.98
<i>x</i> = 0.005	10.868(1)	12.029(2)	5.902(2)	771.63(2)	1.79	1.74	9.63	7.72
<i>x</i> = 0.01	10.863(8)	12.026(5)	5.899(8)	770.84(5)	1.93	1.67	9.31	7.22
<i>x</i> = 0.02	10.862(4)	12.025(7)	5.902(2)	771.00(5)	2.25	1.98	10.30	8.10
<i>x</i> = 0.04	10.865(1)	12.027(6)	5.897(0)	770.63(6)	2.11	1.66	9.47	7.25
<i>x</i> = 0.08	10.853(6)	12.030(0)	5.899(4)	770.29(1)	2.98	1.45	8.12	6.49
<i>x</i> = 0.16	10.881(0)	12.027(4)	5.890(8)	770.93(9)	2.50	1.43	7.68	6.01
ICSD N°4165	10.89(2)	12.03(2)	5.92(2)	775.56	-	-	-	-

Table S2. Atomic positions of the α -Ag_{2-2x}Cu_xO₄ solid solutions with $x = 0.00$ and 0.005 .

[illegible]

Table S3. Atomic positions of the α -Ag_{2-2x}Cu_xO₄ solid solutions with $x = 0.01$ and 0.02 .

α -Ag _{2-2x} Cu _x O ₄ solid solutions										
Atoms	$x = 0.01$					$x = 0.02$				
	x	y	z	Wyckoff Sites	Occupancy (%)	x	y	z	Wyckoff Sites	Occupancy (%)
W1	0.2564(8)	-0.0031(5)	0.5177(9)	4 c	100	0.2540(0)	0.000	0.5255(0)	4 c	100
W2	0.000	0.8443(4)	0.500	2 b	100	0.000	0.8475(0)	0.500	2 b	100
W3	0.000	0.1348(4)	0.500	2 b	100	0.000	0.1380(0)	0.500	2 b	100
Ag1	0.7559(4)	0.1744(7)	0.9899(3)	4 c	100	0.7509(0)	0.1711(0)	0.9877(0)	4 c	100
Ag2	0.2399(4)	0.8209(7)	0.0114(3)	4 c	100	0.2349(0)	0.8176(0)	0.0092(0)	4 c	100
Ag3	0.000	0.9905(7)	0.000	2 a	100	0.000	0.9872(0)	0.000	2 a	100
Ag4	0.000	0.6564(7)	0.000	2 a	100	0.000	0.6531(0)	0.000	2 a	100
Ag5	0.000	0.3181(7)	0.000	2 a	100	0.000	0.3148(0)	0.000	2 a	100
Ag6	0.000	0.5125(7)	0.500	2 b	100	0.000	0.5092(0)	0.500	2 b	100
O1	0.3701(0)	0.5998(7)	0.1864(4)	4 c	100	0.3680(0)	0.6120(0)	0.1950(0)	4 c	100
O2	0.3701(0)	0.3658(7)	0.1794(4)	4 c	100	0.3717(0)	0.3780(0)	0.1880(0)	4 c	100
O3	0.4211(0)	0.7228(7)	0.8064(4)	4 c	100	0.4227(0)	0.7350(0)	0.8150(0)	4 c	100
O4	0.4271(0)	0.2508(7)	0.7834(4)	4 c	100	0.4287(0)	0.2630(0)	0.7920(0)	4 c	100
O5	0.1641(0)	0.4818(7)	0.2734(4)	4 c	100	0.1657(0)	0.4940(0)	0.2820(0)	4 c	100
O6	0.4161(0)	0.4838(7)	0.8384(4)	4 c	100	0.4177(0)	0.4960(0)	0.8470(0)	4 c	100
O7	0.1911(0)	0.5998(7)	0.8484(4)	4 c	100	0.1927(0)	0.6120(0)	0.8570(0)	4 c	100
O8	0.1951(0)	0.3668(7)	0.8914(4)	4 c	100	0.1967(0)	0.3790(0)	0.9000(0)	4 c	100
Cu1	-	-	-	-	-	-	-	-	-	-
Cu2	-	-	-	-	-	-	-	-	-	-
Cu3	-	-	-	-	-	-	-	-	-	-
Cu4	-	-	-	-	-	-	-	-	-	-
Cu5	-	-	-	-	-	-	-	-	-	-
Cu6	-	-	-	-	-	-	-	-	-	-

Table S4. Atomic positions of the α -Ag_{2-2x}Cu_xO₄ solid solutions with $x = 0.04$ and 0.08 .

α -Ag _{2-2x} Cu _x O ₄ solid solutions										
Atoms	$x = 0.04$					$x = 0.08$				
	x	y	z	Wyckoff Sites	Occupancy (%)	x	y	z	Wyckoff Sites	Occupancy (%)
W1	0.2577(8)	-0.0019(0)	0.5192(6)	4 c	100	0.2599(0)	-0.0032(9)	0.5274(5)	4 c	100
W2	0.000	0.8455(9)	0.500	2 b	100	0.000	0.8442(0)	0.500	2 b	100
W3	0.000	0.1360(9)	0.500	2 b	100	0.000	0.1347(0)	0.500	2 b	100
Ag1	0.7519(6)	0.1732(0)	0.9917(5)	4 c	100	0.7551(4)	0.1752(5)	0.9922(8)	4 c	84.01
Ag2	0.2359(6)	0.8197(0)	0.0132(5)	4 c	100	0.2391(4)	0.8217(5)	0.0137(8)	4 c	100
Ag3	0.000	0.9893(0)	0.000	2 a	100	0.000	0.9913(5)	0.000	2 a	100
Ag4	0.000	0.6552(0)	0.000	2 a	100	0.000	0.6572(5)	0.000	2 a	100
Ag5	0.000	0.3169(0)	0.000	2 a	100	0.000	0.3189(5)	0.000	2 a	100
Ag6	0.000	0.5113(0)	0.500	2 b	100	0.000	0.5133(5)	0.500	2 b	100
O1	0.3717(7)	0.6016(5)	0.1770(5)	4 c	100	0.3735(3)	0.6031(1)	0.1854(4)	4 c	100
O2	0.3717(7)	0.3676(5)	0.1700(5)	4 c	100	0.3735(3)	0.3691(1)	0.1784(4)	4 c	100
O3	0.4227(7)	0.7246(5)	0.7970(5)	4 c	100	0.4245(3)	0.7261(1)	0.8054(4)	4 c	100
O4	0.4287(7)	0.2526(5)	0.7740(5)	4 c	100	0.4305(3)	0.2541(1)	0.7824(4)	4 c	100
O5	0.1657(7)	0.4836(5)	0.2640(5)	4 c	100	0.1675(3)	0.4851(1)	0.2724(4)	4 c	100
O6	0.4177(7)	0.4856(5)	0.8290(5)	4 c	100	0.4195(3)	0.4871(1)	0.8374(4)	4 c	100
O7	0.1927(7)	0.6016(5)	0.8390(5)	4 c	100	0.1945(3)	0.6031(1)	0.8474(4)	4 c	100
O8	0.1967(7)	0.3686(5)	0.8820(5)	4 c	100	0.1985(3)	0.3701(1)	0.8904(4)	4 c	100
Cu1	-	-	-	-	-	0.7509(0)	0.1711(0)	0.9877(0)	4 c	8.0
Cu2	-	-	-	-	-	0.2349(0)	0.8176(0)	0.0092(0)	4 c	0.0
Cu3	-	-	-	-	-	0.000	0.9872(0)	0.000	2 a	0.0
Cu4	-	-	-	-	-	0.000	0.6531(0)	0.000	2 a	0.0
Cu5	-	-	-	-	-	0.000	0.3148(0)	0.000	2 a	0.0
Cu6	-	-	-	-	-	0.000	0.5092(0)	0.500	2 b	0.0

Table S5. Atomic positions of the α -Ag_{2-2x}Cu_xO₄ solid solutions with $x = 0.16$.

α -Ag _{2-2x} Cu _x WO ₄ solid solutions					
Atoms	$x = 0.16$				
	x	y	z	Wyckoff Sites	Occupancy (%)
W1	0.2593(2)	-0.0045(2)	0.5202(5)	4 c	100
W2	0.000	0.8429(7)	0.500	2 b	100
W3	0.000	0.1334(7)	0.500	2 b	100
Ag1	0.7542(9)	0.1760(1)	0.9926(1)	4 c	73.82
Ag2	0.2382(9)	0.8225(1)	0.0141(1)	4 c	100
Ag3	0.000	0.9921(1)	0.000	2 a	94.24
Ag4	0.000	0.6580(1)	0.000	2 a	100
Ag5	0.000	0.3197(1)	0.000	2 a	100
Ag6	0.000	0.5141(1)	0.500	2 b	100
O1	0.3704(8)	0.5952(7)	0.1856(0)	4 c	100
O2	0.3704(8)	0.3612(7)	0.1786(0)	4 c	100
O3	0.4214(8)	0.7182(7)	0.8056(0)	4 c	100
O4	0.4274(8)	0.2462(7)	0.7826(0)	4 c	100
O5	0.1644(8)	0.4772(7)	0.2726(0)	4 c	100
O6	0.4164(8)	0.4792(7)	0.8376(0)	4 c	100
O7	0.1914(8)	0.5952(7)	0.8476(0)	4 c	100
O8	0.1954(8)	0.3622(7)	0.8906(0)	4 c	100
Cu1	0.7509(0)	0.1711(0)	0.9877(0)	4 c	13.09
Cu2	0.2349(0)	0.8176(0)	0.0092(0)	4 c	0.0
Cu3	0.000	0.9872(0)	0.000	2 a	2.88
Cu4	0.000	0.6531(0)	0.000	2 a	0.0
Cu5	0.000	0.3148(0)	0.000	2 a	0.0
Cu6	0.000	0.5092(0)	0.500	2 b	0.0

Table S6. Values of peaks ratios in At% between C, Ag, W, O, and Cu for typical XPS survey spectra of $\alpha\text{-Ag}_{2-2x}\text{Cu}_x\text{WO}_4$ ($0 \leq x \leq 0.16$) solid solutions.

$\alpha\text{-Ag}_{2-2x}\text{Cu}_x\text{WO}_4$ solid solutions	C-1s	Ag-3d	W-4d	O-1s	Cu-2p
$x = 0.00$	67.46	7.35	1.23	23.95	-
$x = 0.005$	63.41	7.42	1.89	27.28	-
$x = 0.01$	49.83	13.21	3.87	33.09	-
$x = 0.02$	56.75	9.73	3.56	29.42	0.55
$x = 0.04$	48.93	15.46	3.12	31.95	0.54
$x = 0.08$	58.09	6.88	4.57	30.16	0.30
$x = 0.16$	60.69	5.01	2.56	31.55	0.20

Table S7. FWHM values, intensities, and positions of the Raman peaks of $\alpha\text{-Ag}_{2-2x}\text{Cu}_x\text{WO}_4$ ($0 \leq x \leq 0.16$) solid solutions.

$\alpha\text{-Ag}_{2-2x}\text{Cu}_x\text{WO}_4$ solid solutions	FWHM	Intensities	Positions 2θ ($^\circ$)
$x = 0.00$	19.148	0.850	879.60
$x = 0.005$	16.598	0.891	879.65
$x = 0.01$	21.844	0.863	878.82
$x = 0.02$	16.687	0.902	879.41
$x = 0.04$	16.911	0.875	879.68
$x = 0.08$	18.171	0.840	879.76
$x = 0.16$	17.791	0.939	880.01